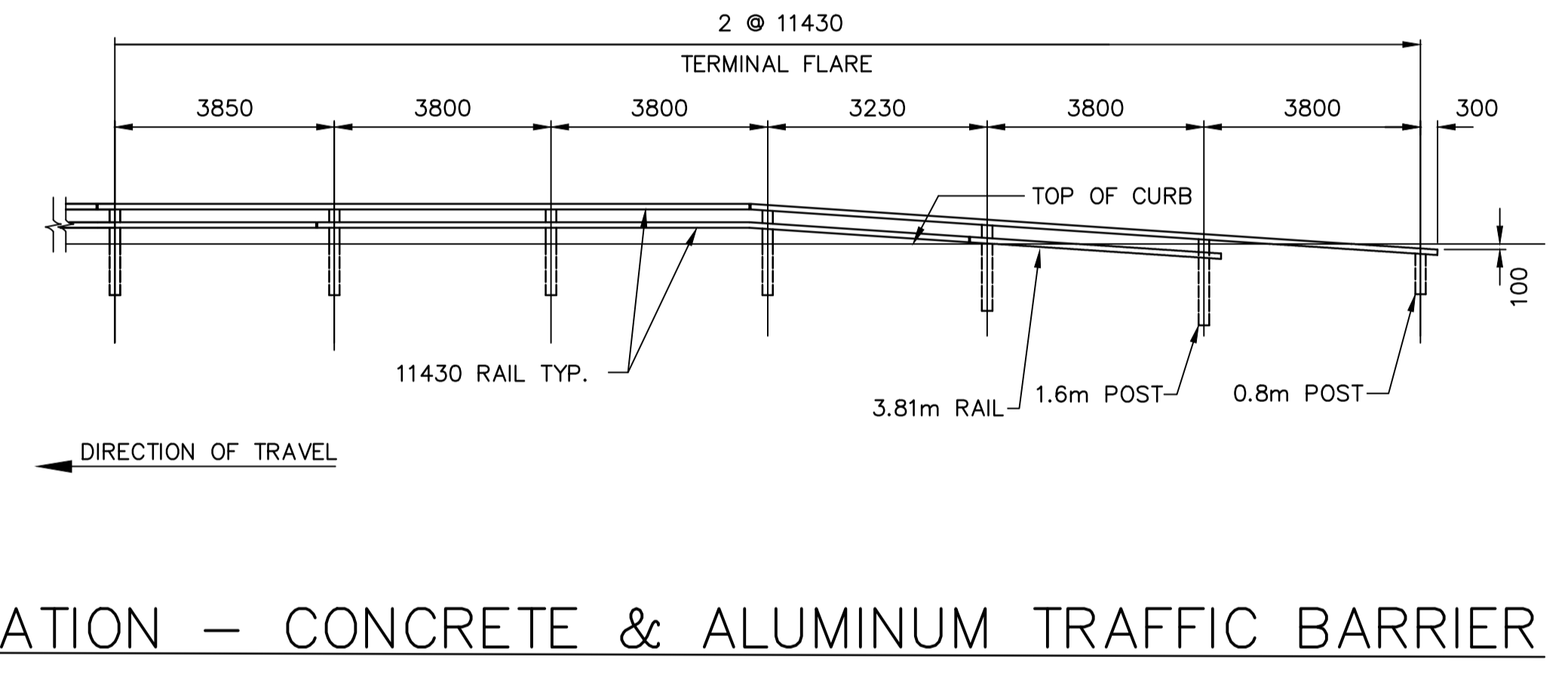
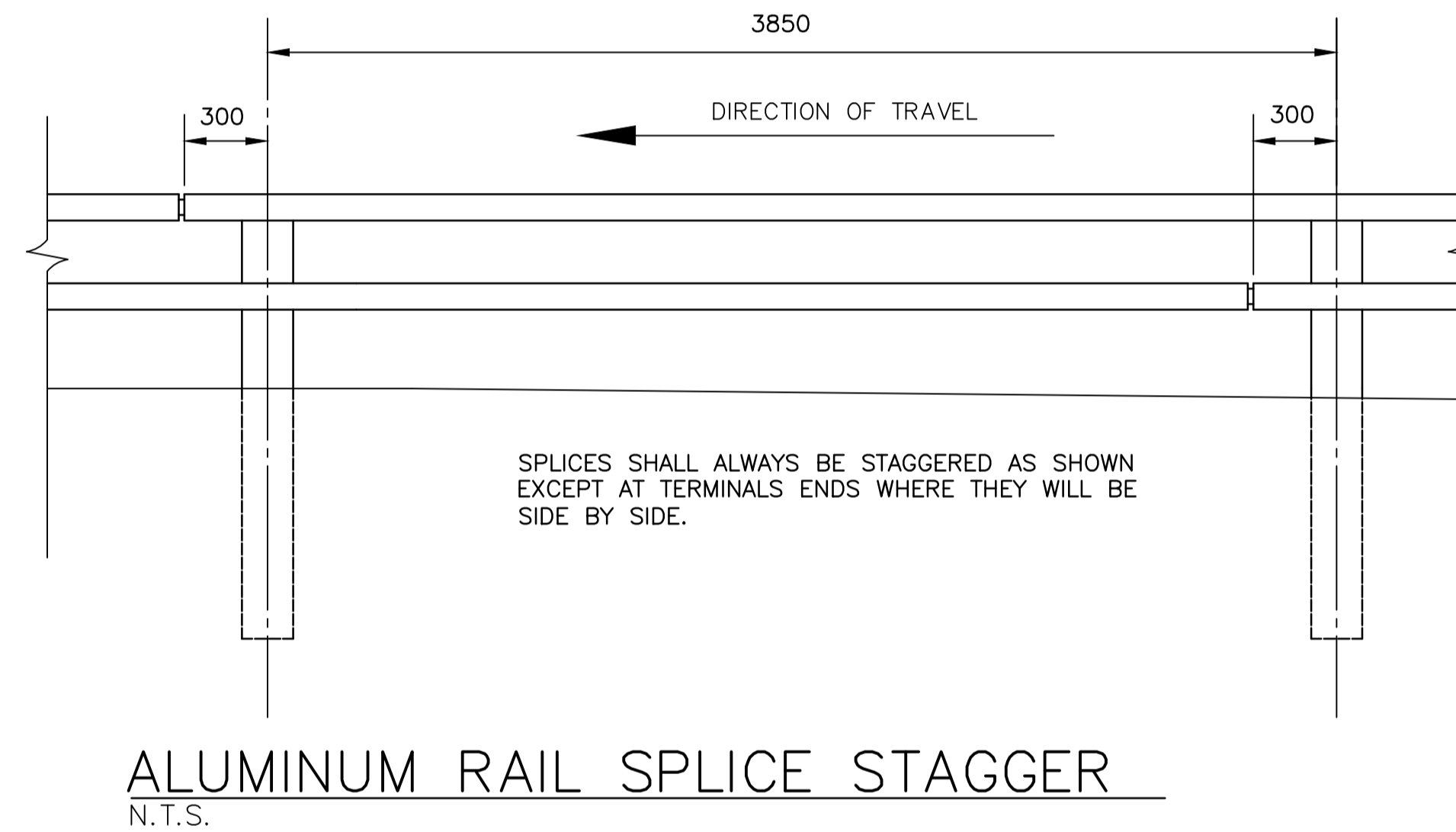
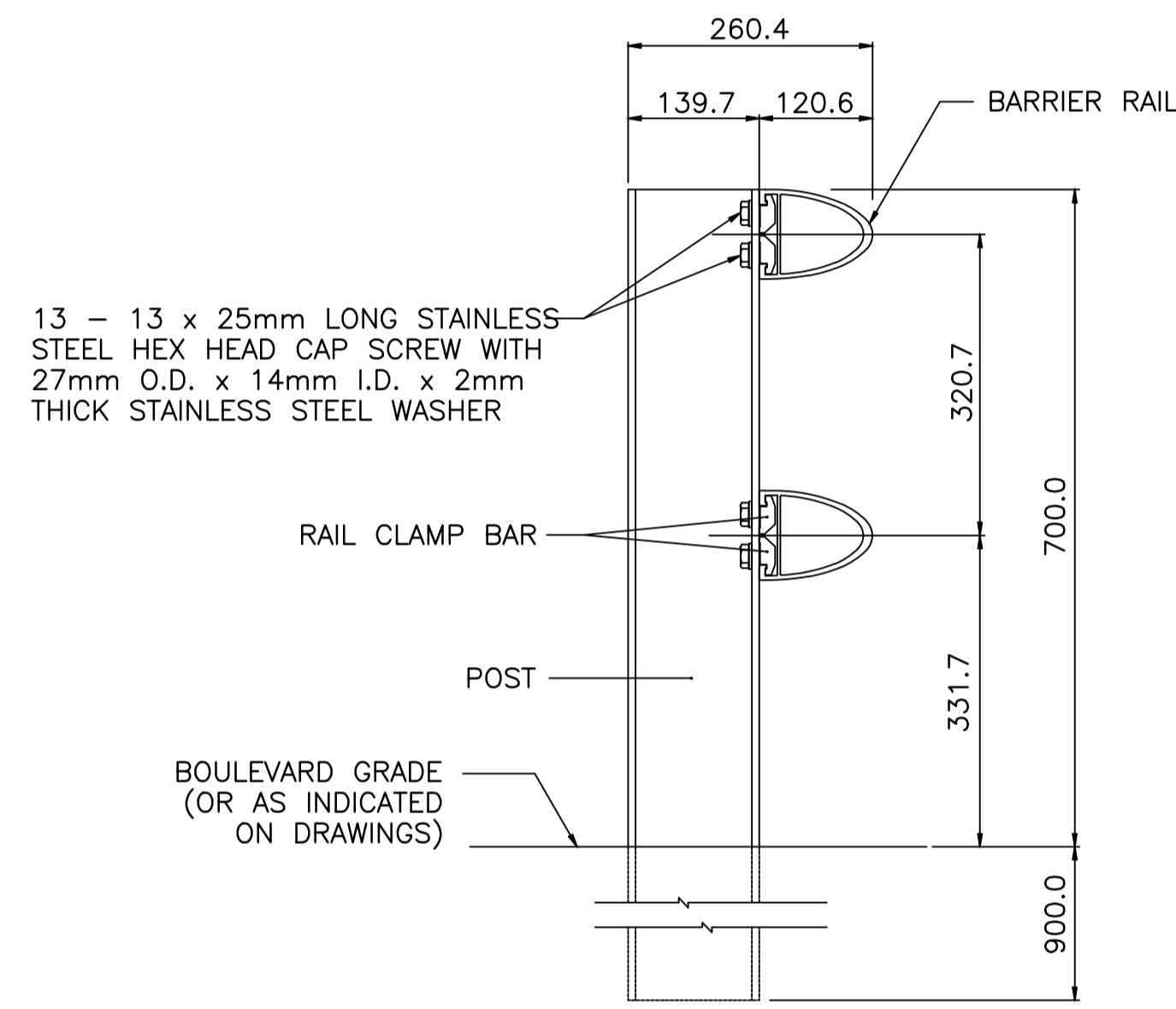
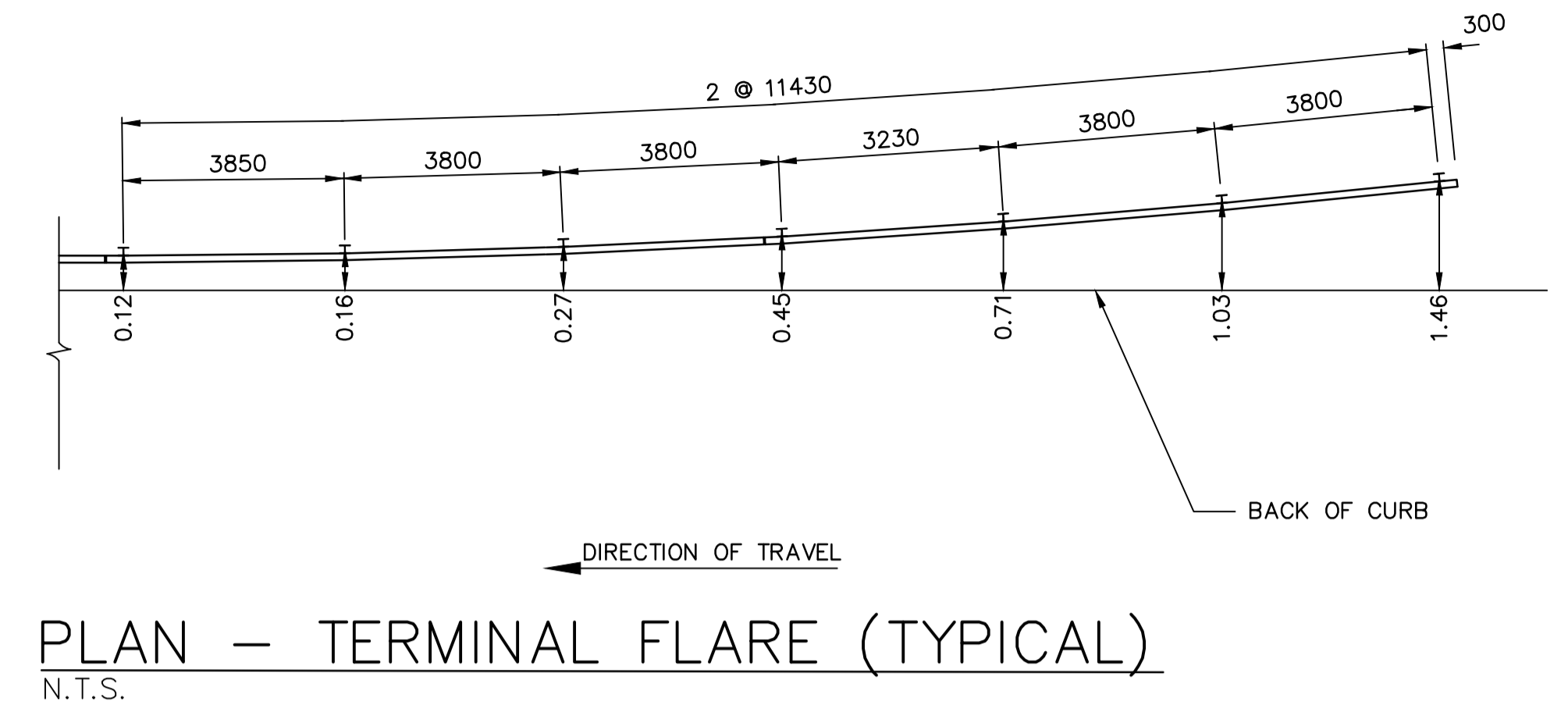
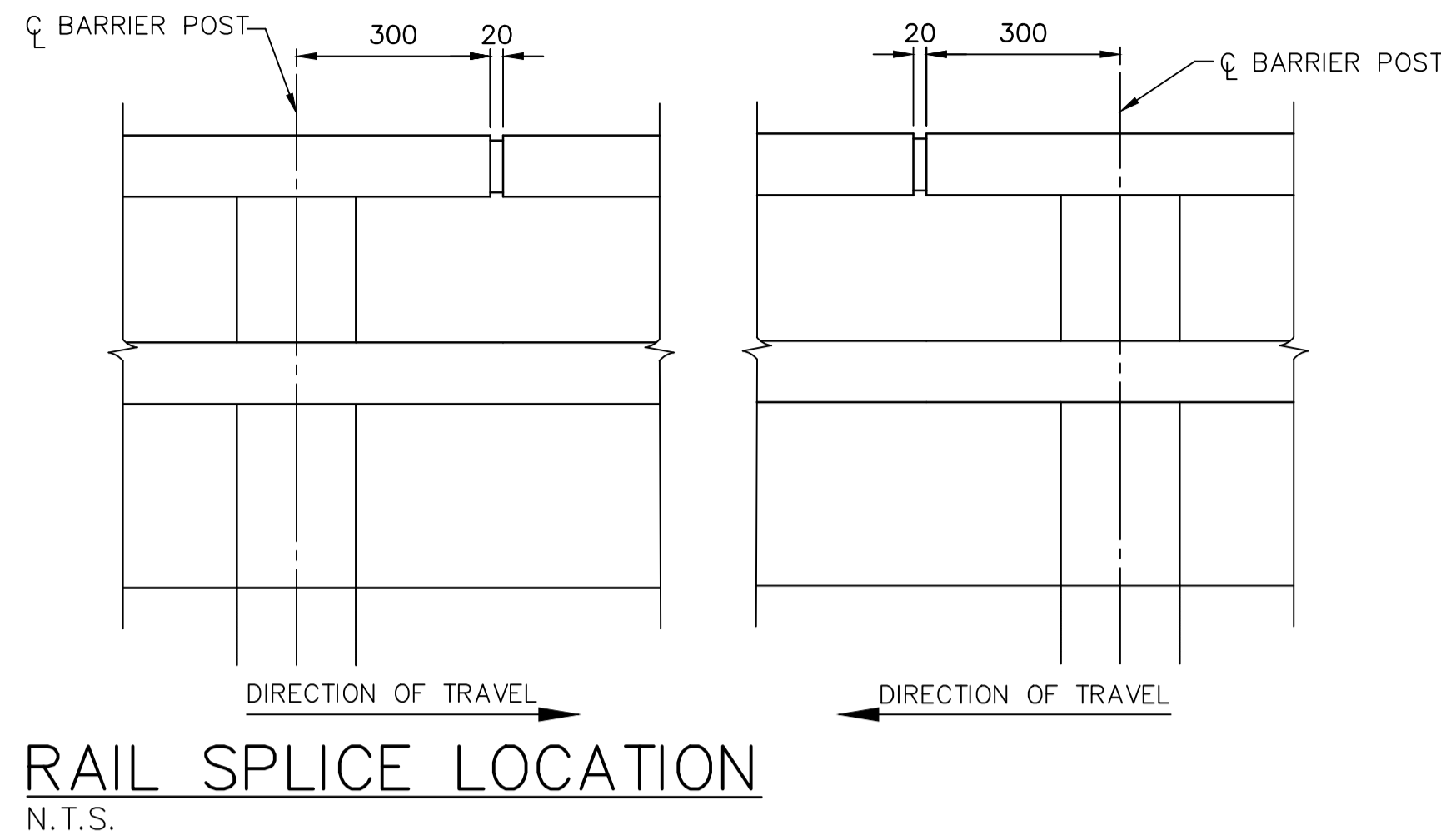


MATERIAL SPECIFICATION

1. ALUMINUM RAILS, POSTS, SPLICE BARS, AND RAIL END CAPS SHALL CONFORM TO ASTM B221, ALLOY 6061 - T6, OR ALLOY 6351 - T6.
2. TYPE 316. STAINLESS STEEL WASHERS SHALL CONFORM TO ASTM A296, TYPE 316.
3. CAP SCREWS SHALL CONFORM TO ASTM A276, TYPE 316 STAINLESS STEEL.
4. ANTI-SEIZE COATING TO BE APPLIED TO ALL THREADED COMPONENTS WHEN BEING ASSEMBLED, i.e. LPS-3-MANUFACTURED BY HOLT LLOYD (CANADA) LTD., MARKHAM, ONTARIO L3R 2Z3
5. TWO COATS, EACH 1mm IN THICKNESS OF ALKALI-RESISTANT BITUMINOUS PAINT SHALL BE APPLIED ON THE SURFACES OF POSTS AND RAILS THAT ARE IN CONTACT WITH THE GROUND.



RAIL TO POST ASSEMBLY DETAIL
N.T.S.

ALUMINUM RAIL SPLICE STAGGER
N.T.S.

ELEVATION - CONCRETE & ALUMINUM TRAFFIC BARRIER
N.T.S.

CONSTRUCTION NOTES

- 1) CURB REPLACEMENT AS DIRECTED BY THE CONTRACT ADMINISTRATOR
- 2) ALL STREET RADIUS CURB UNDER 15M RADIUS SHALL BE REPLACED AS MODIFIED OR AS DIRECTED BY THE CONTRACT ADMINISTRATOR
- 3) ALL BULLNOSES TO HAVE SLOPED FACE.

WARNING

IF POWER EQUIPMENT OR EXPLOSIVES ARE TO BE USED FOR EXCAVATION ON THIS PROJECT THE CONTRACTOR MUST:

- 1) OBTAIN CLEARANCE FROM THE GAS UTILITY PRIOR TO EXCAVATION.
- 2) TAKE PRECAUTION TO AVOID DAMAGE TO GAS UTILITY INSTALLATIONS.

SEE PROVINCIAL REGULATION 210/72 FOR DETAILS

PRELIMINARY
NOT TO BE USED FOR CONSTRUCTION

METRIC
WHOLE NUMBERS INDICATE MILLIMETRES
DECIMALIZED NUMBERS INDICATE METRES

BID OPPORTUNITY NO. 241-2016

⊕	HYDRANT	⊕	---	LDS/WWS	---	---	NORTH GUTTER	---	LOCATION APPROVED UNDERGROUND STRUCTURES	B.M. ELEV. GBM 75-004 233.501	DESIGNED BY D.K. CHECKED BY M.R.D. DRAWN BY R.M./D.K. APPROVED BY HOR. SCALE: 1 : 500 VERTICAL: N.T.S. DATE: 2016/04/27	ENGINEER'S SEAL	THE CITY OF WINNIPEG PUBLIC WORKS DEPARTMENT WAVERLEY STREET FROM BISHOP GRANDIN BOULEVARD TO SCURFIELD BOULEVARD ACTIVE TRANSPORTATION PATH AND ASSOCIATED WORKS FROM 1700 WAVERLEY TO SCURFIELD BOULEVARD	CITY DRAWING NUMBER SE-13-37 SHEET 3 OF 3 3
⊙	VALVE	⊙	---	WATERMAIN	---	CENTER LINE	---							
⊚	CURB STOP	⊚	---	GAS	---	SOUTH GUTTER	---							
---	ASPHALT PATHWAY	---	---	HYDRO	---	---	---	---	SUPR. U/G STRUCTURES COMMITTEE DATE NOTE: LOCATION OF UNDERGROUND STRUCTURES AS SHOWN ARE BASED ON THE BEST INFORMATION AVAILABLE. BUT NO GUARANTEE IS GIVEN THAT ALL EXISTING UTILITIES ARE SHOWN OR THAT THE GIVEN LOCATIONS ARE EXACT. CONFIRMATION OF EXISTENCE AND EXACT LOCATION OF ALL SERVICES MUST BE OBTAINED FROM THE INDIVIDUAL UTILITIES BEFORE PROCEEDING WITH CONSTRUCTION.	NO. REVISIONS	DATE	BY		
○	MANHOLE	●	---	CONCRETE	---	---	---							
□	CATCH BASIN	■	231.000	CURB RENEWAL	---	---	---							
△	CURB INLET	▲	---	ELEVATIONS	[231.000]	---	---	---						
☆	HYDRO POLE	★	---	PROPERTY LINE	---	---	---	---						
⊙→	TRAFFIC SIGNAL POLE	⊙→	---	SURVEY BAR	---	---	---	---						
---	MTS	---	---	GEODETIC BENCH MARK	---	---	---	---						
---	EXISTING	---	---	RAMP CURB	---	---	---	---						
---	LEGEND - PLAN	---	---	EXISTING	---	---	---	---						
---	PROPOSED	---	---	LEGEND - PROFILE	---	---	---	---						
---	EXISTING	---	---	PROPOSED	---	---	---	---						