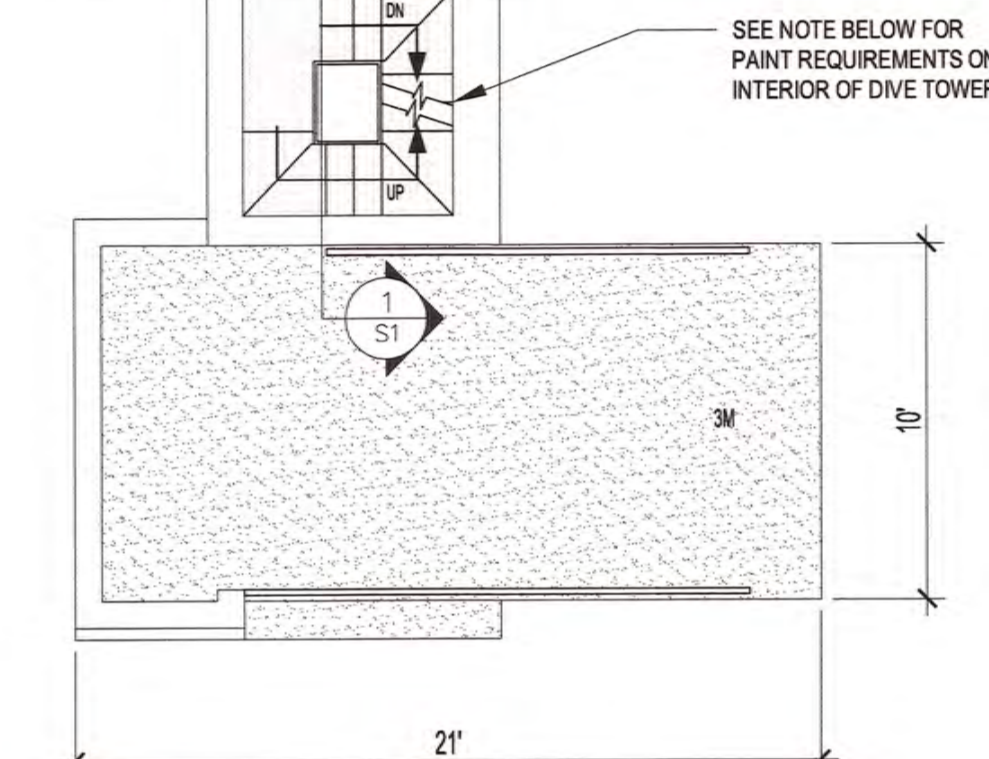
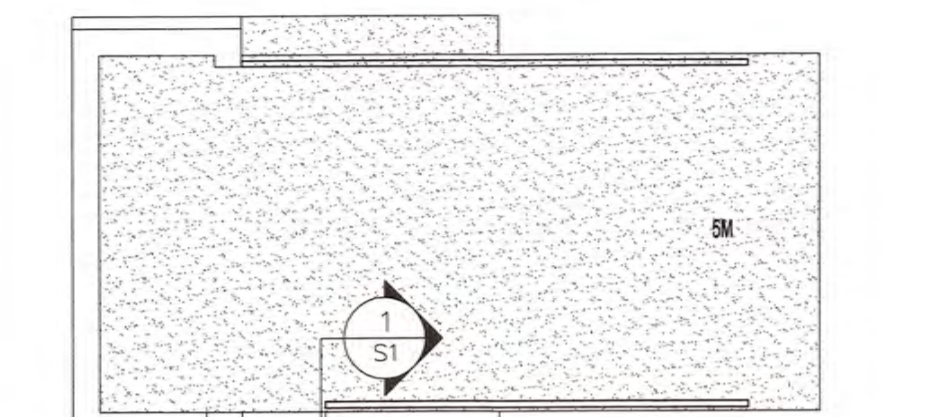
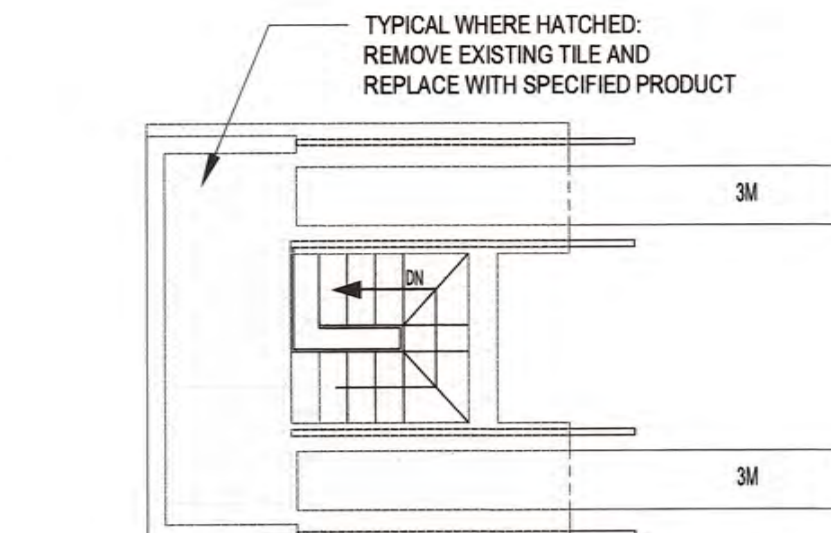
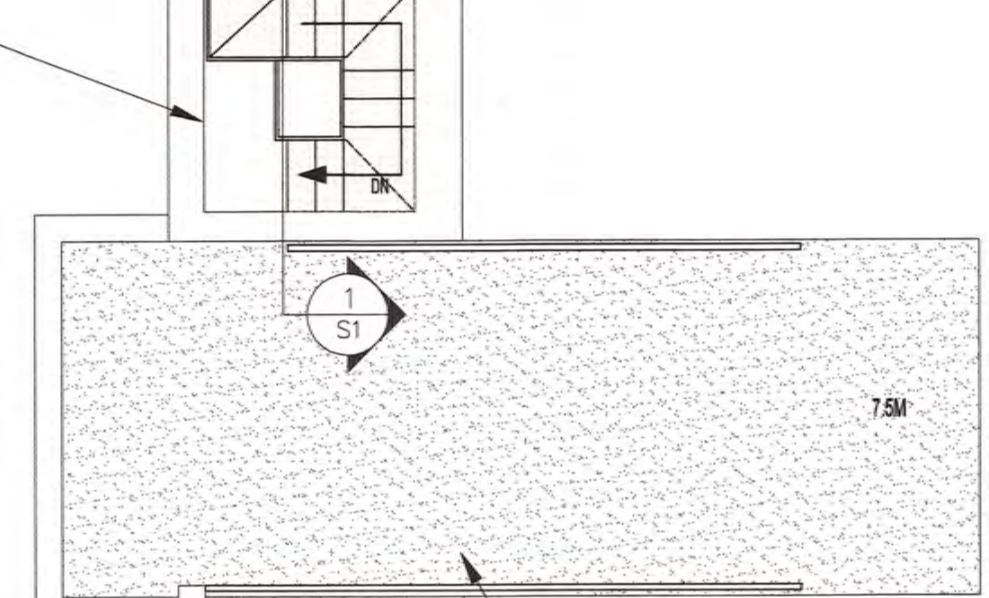
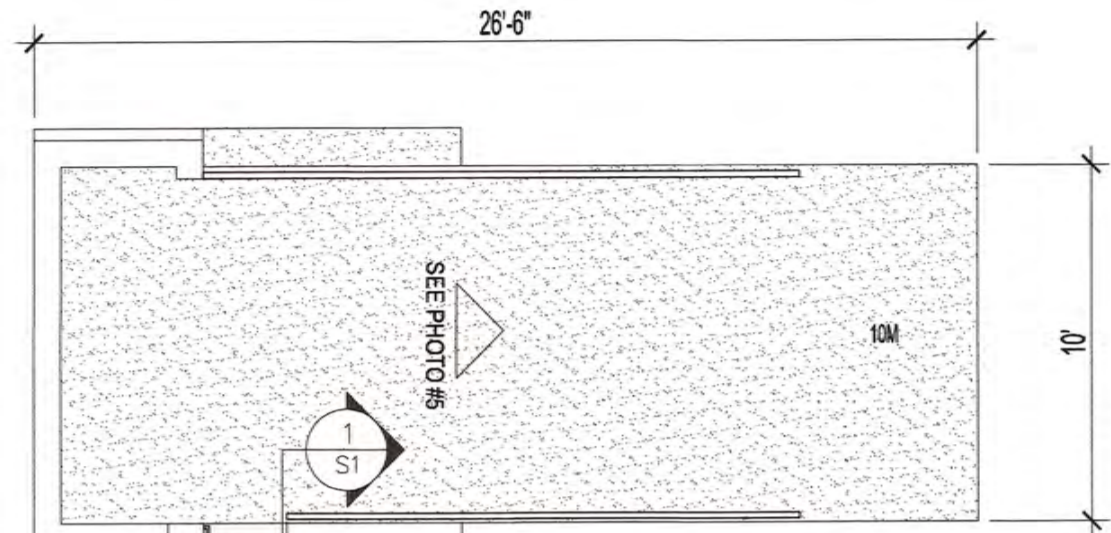


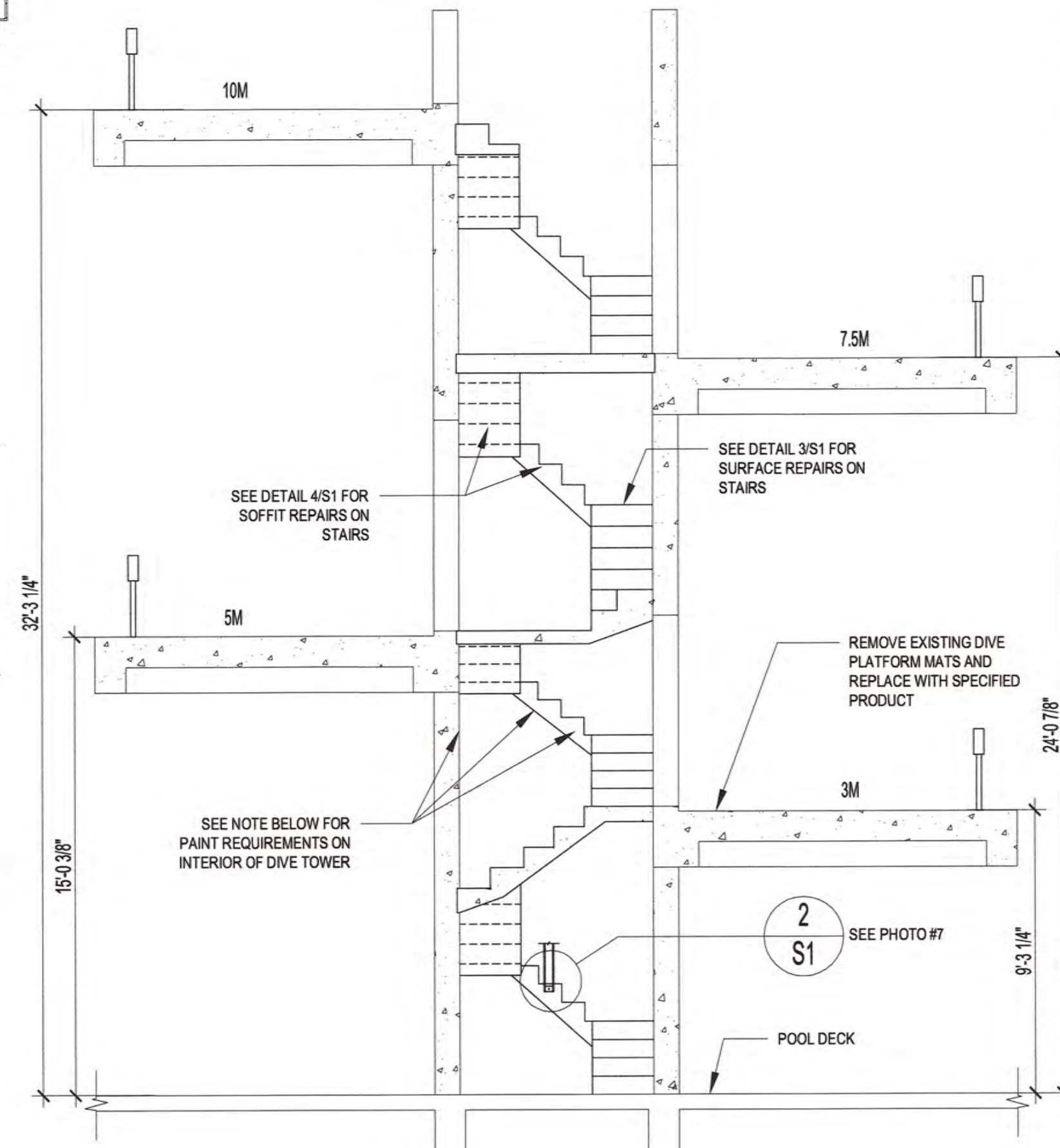
KEY PLAN  
N.T.S.



MID-LEVEL PLAN  
SCALE: 3/16"=1'-0"

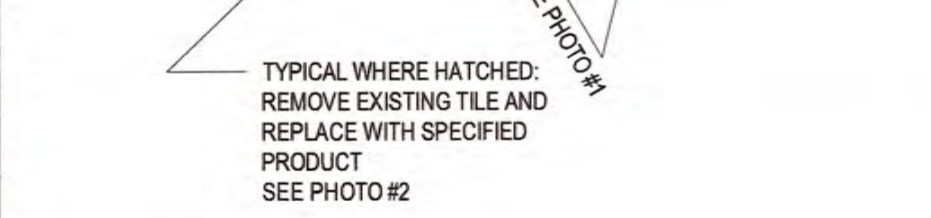
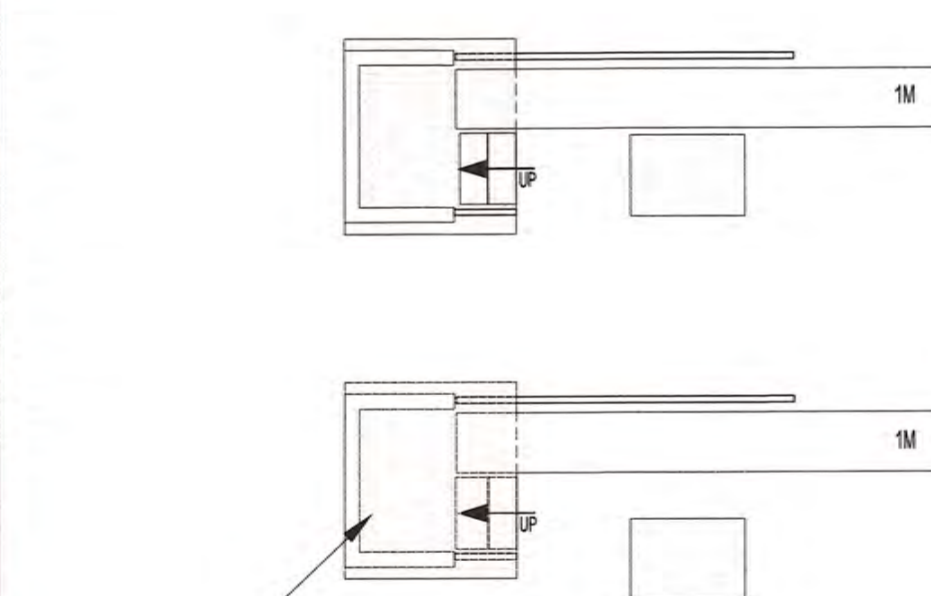
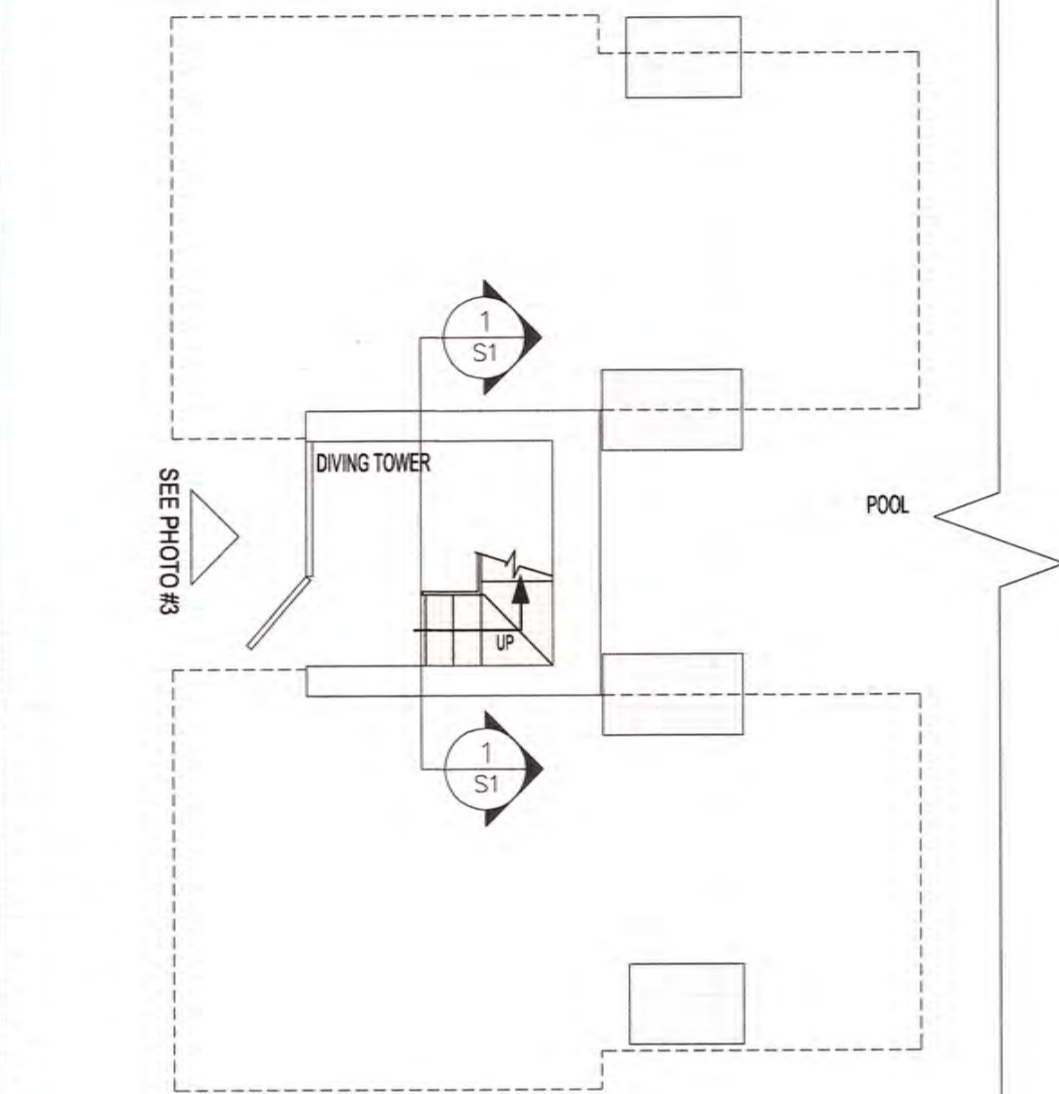
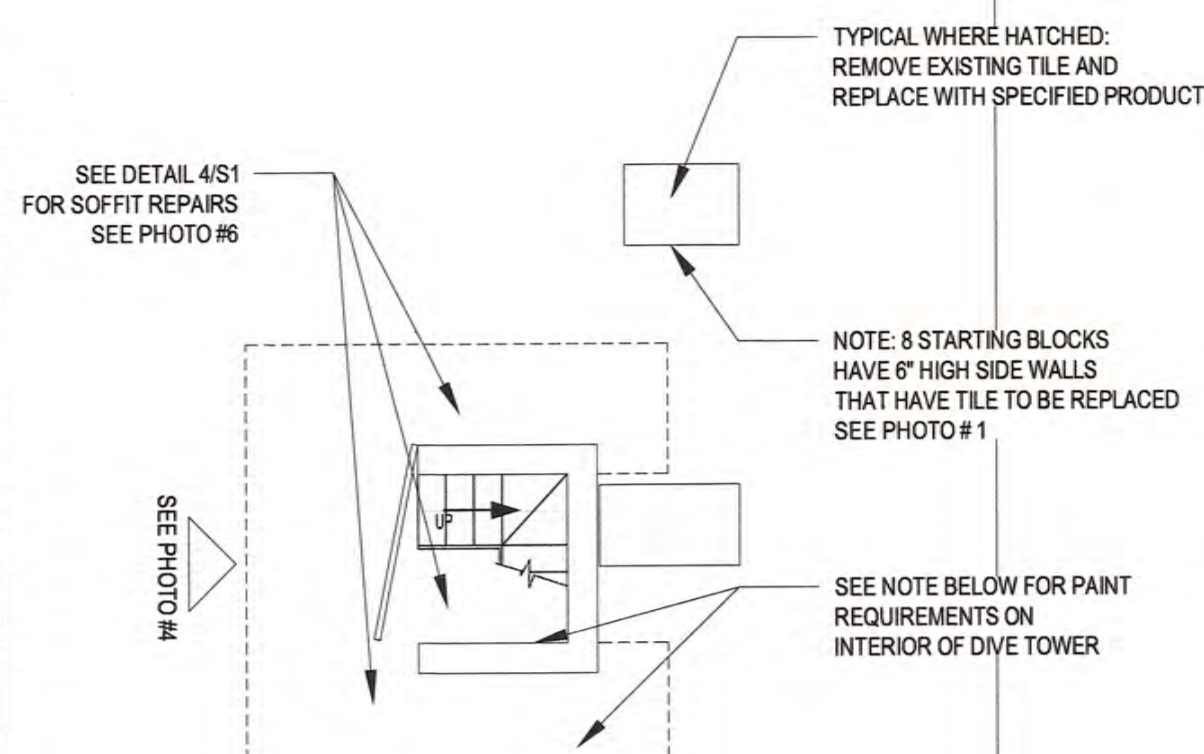


UPPER-LEVEL PLAN  
SCALE: 3/16"=1'-0"

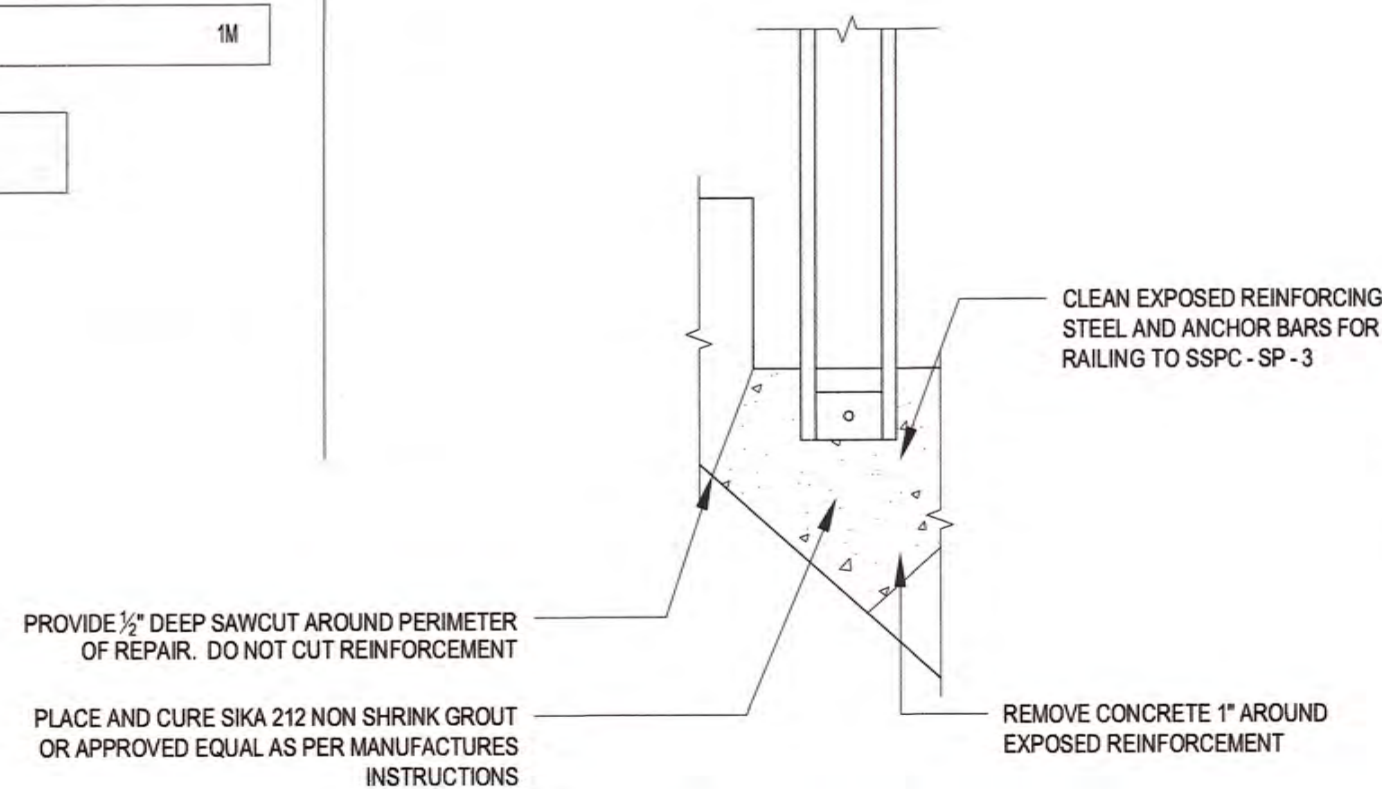


1 DIVING TOWER SECTION  
SCALE: 1/4"=1'-0"

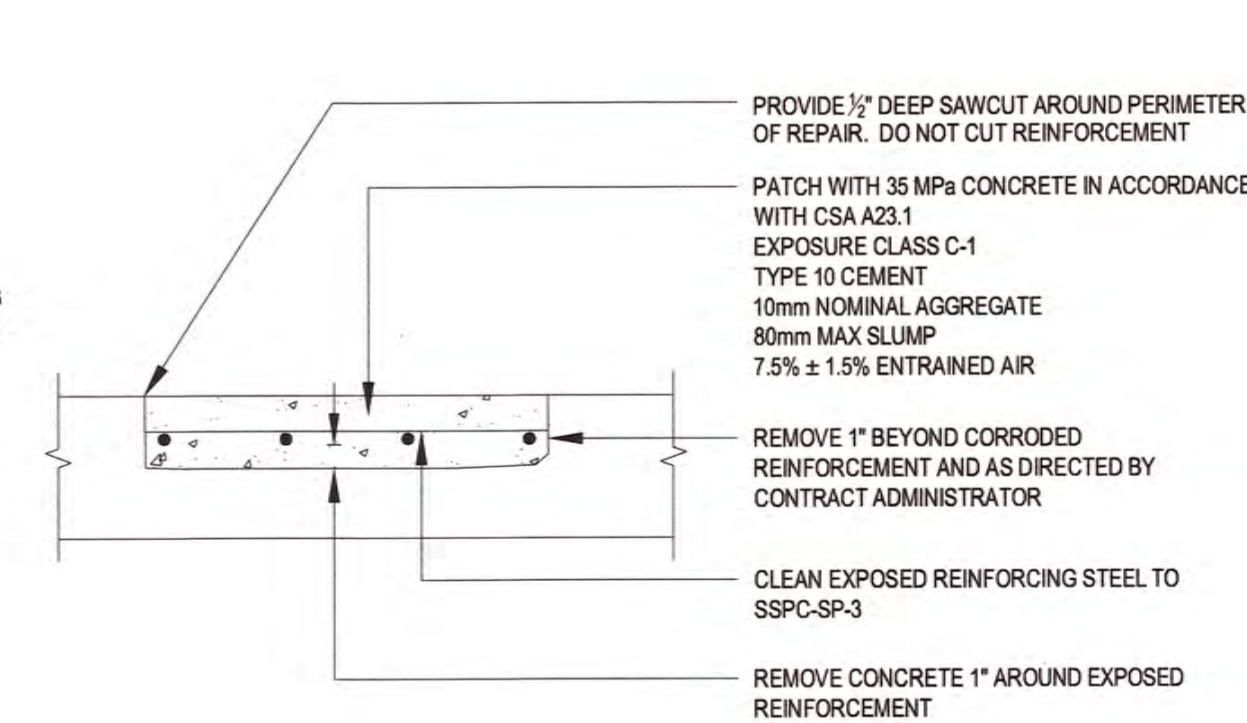
NOTES:  
THESE DRAWINGS SHALL NOT BE SCALED.  
THE CONTRACTOR SHALL VISIT THE SITE AND SATISFY ONESELF ALL DIMENSIONS, DATUM, AND DETAILED INFORMATION SHOWN ARE CORRECT.  
ALL PRODUCTS AND MATERIALS TO BE USED AND INSTALLED SHALL CONFORM WITH MANUFACTURER'S SPECIFICATIONS & APPLICABLE CODES.  
THE CONTRACTOR SHALL BE RESPONSIBLE TO PATCH AND MAKE GOOD ALL EXISTING CONSTRUCTION AFFECTED BY THE REMOVAL OF ALL ITEMS FORMING THE PART OF THE RENOVATION WORK.  
WHERE NEW FLOORING IS TO BE INSTALLED IN EXISTING AREAS (REFER TO FLOOR FINISH SCHEDULE) THE EXISTING FLOORING SURFACE MUST BE REMOVED, UNLESS OTHERWISE NOTED. ALL FLOOR SURFACES SHALL BE PREPARED IN ACCORDANCE TO MANUFACTURER'S RECOMMENDATIONS FOR INSTALLATION OF NEW FLOOR.  
WHERE PAINTING OF EXISTING WALLS IS INDICATED, THESE WALLS MUST BE CLEANED OF ANY EXISTING WALL COVERING, PATCHED & PREPARED TO ACCEPT NEW MATERIAL, UNLESS OTHERWISE NOTED.



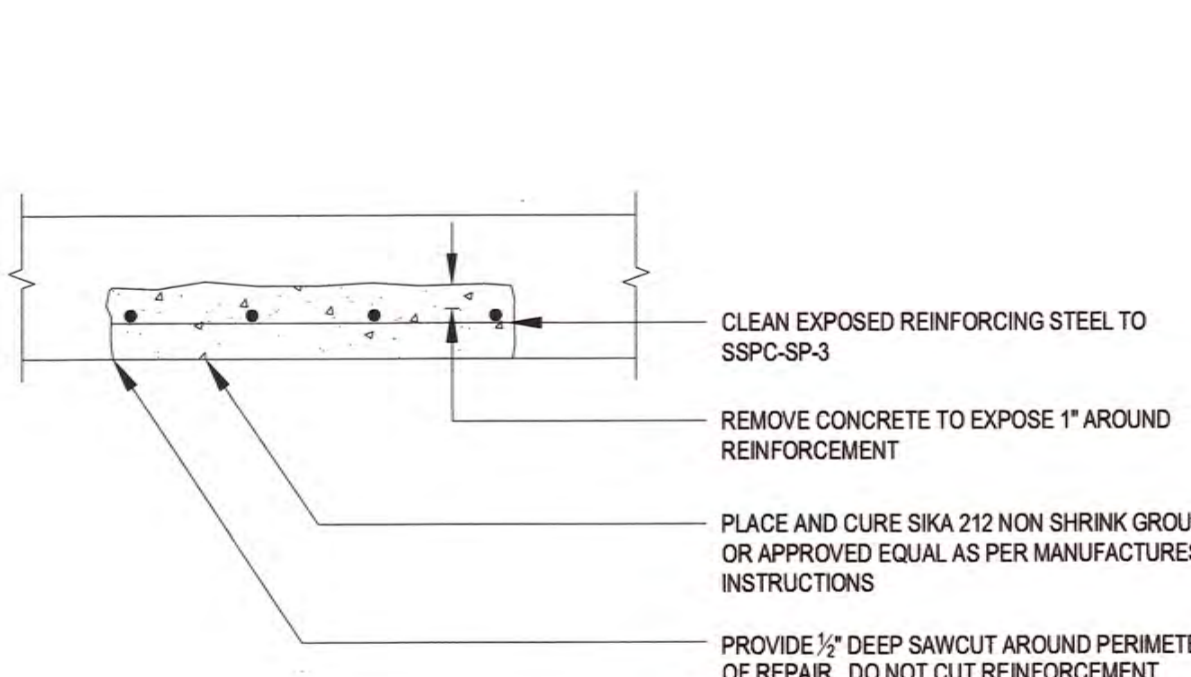
PARTIAL POOL DECK  
SCALE: 3/16"=1'-0"



2 CONCRETE STAIR REPAIR  
SCALE: 1 1/2"=1'-0"



3 TYPICAL TOP SURFACE REPAIR  
SCALE: 1 1/2"=1'-0"



4 TYPICAL SOFFIT REPAIR  
SCALE: 1 1/2"=1'-0"

FLOOR FINISH SCHEDULE

	REMOVE EXISTING CERAMIC TILES, PREPARE THE SUBSTRATE AS REQUIRED AND INSTALL NEW DAL TILE KEYSTONE 2'x2' ABRASIVE FINISH PORCELAIN TILES (WHITE) CW BLACK BULLNOSE TRIMS ON THE NOSINGS WITH ULTRA COLOR POLYMER GROUT (OR APPROVED EQUAL).
	REMOVE EXISTING FLOOR MAT AND INSTALL NEW 2 - PLY BLACK ROUGH-TEX DIVE MAT (OR APPROVED EQUAL) AS PER MANUFACTURERS RECOMMENDATIONS. SUPPLIER CONTACT INFO: AQUAM 1-800-935-4878

NOTE: SEE BID OPPORTUNITY FOR SQUARE FOOTAGE OF EACH TYPE OF CONCRETE REPAIR TO PROVIDE PRICING FOR EXACT LOCATIONS TO BE DETERMINED ON SITE BY CONTRACTOR, AND VERIFIED BY CONTRACT ADMINISTRATOR PRIOR TO SAW-CUTTING.

PAINT: ALL INTERIOR PAINTED SURFACES IN THE DIVE TOWER ARE TO BE RE-PAINTED. CONTRACTOR TO WASH AND SAND SURFACE. PRIME WITH 100% ACRYLIC PRIMER AND PAINT WITH 100% ACRYLIC SEMI-GLOSS (COLOR TO MATCH EXISTING).

0	ISSUED FOR CONSTRUCTION	JKR	APR 12 2016
No.	REVISION/DESCRIPTION	BY	DATE



DRAWN	JKR	CHECKED	JAW	DESIGNED	BON	APPROVED
DATE	2016.04.07	USER	APPROVAL			

THE CITY OF WINNIPEG  
PLANNING, PROPERTY AND  
DEVELOPMENT DEPARTMENT  
MUNICIPAL ACCOMMODATIONS DIVISION  
3-65 GARRY STREET, R3C 4K4

PROJECT  
DIVING TOWER STRUCTURAL REPAIRS  
PAN-AM POOL

25 POSEIDON BAY  
SHEET TITLE

PARTIAL PLANS, SECTIONS, DETAILS  
& SPECIFICATIONS

SCALE	PROJECT No:	SHEET No:
AS SHOWN	2016-033	S1