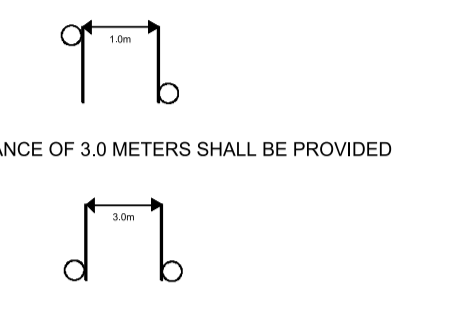


NOTES :

CONSTRUCTION STANDARDS
 TO BE CONSTRUCTED IN ACCORDANCE WITH MANITOBA HYDRO DISTRIBUTION AND SUBTRANSMISSION STANDARDS. LATEST REVISION. NO MAJOR CHANGE SHALL BE MADE WITHOUT APPROVAL OF THE DESIGN ENGINEER OR DELEGATE.

CITY OF WINNIPEG REQUIREMENTS:

WATER AND WASTE DEPARTMENT APPROVAL SUBJECT TO THE FOLLOWING NOTES:
 A MINIMUM CLEARANCE OF 1000 MILLIMETERS SHALL BE PROVIDED BETWEEN THE UNDERSIDE OF ANY EXISTING WATERMAIN OR SEWERMAIN PIPE AND THE TOP OF THE PROPOSED WORKS.
 OR
 A MINIMUM CLEARANCE OF 600 MILLIMETERS SHALL BE PROVIDED BETWEEN THE UNDERSIDE OF THE PROPOSED WORKS AND THE TOP OF ANY EXISTING WATERMAIN OR SEWERMAIN PIPE.
 A MINIMUM LATERAL CLEARANCE OF 1.0 METER SHALL BE PROVIDED BETWEEN THE NEAREST EDGE OF THE PROPOSED WORKS AND THE NEAREST EDGE OF ANY EXISTING WATERMAIN, WATERMAIN VALVE, HYDRANT, SEWERMAIN OR SEWER MANHOLE.



CONTACT "CLICK BEFORE YOU DIG MANITOBA" AT ClickBeforeYouDigMB.com
THREE FULL WORKING DAYS
 PRIOR TO CONSTRUCTION FOR LOCATION OF EXISTING WATER, WASTEWATER AND LAND DRAINAGE UTILITIES

PROPOSED SEQUENCE OF CONSTRUCTION:

- M1 STAFF SHALL DISCONNECT AND ISOLATE THE EXISTING STREET LIGHT POLE OR POLES TO BE REPLACED.
- CONTRACTOR TO INSTALL TEMPORARY OH FEEDS BETWEEN EXISTING POLES.
- M1 STAFF TO INSTALL FINAL DROP FROM EXISTING POLE TO SOURCE AND ENERGIZE.
- CONTRACTOR TO INSTALL NEW POLES, UNDERGROUND STREET LIGHT CABLE BETWEEN POLES, GROUND RODS, RELAYS, AND BOTTOM SECTION OF CABLE GUARD AT DIP IF APPLICABLE AND TERMINATE IN HANDHOLE.
- M1 STAFF TO DISCONNECT AND ISOLATE TEMPORARY OH FEED TO EXISTING POLES, AS WELL AS COMMISSION AND ENERGIZE NEW POLES FROM NEW UNDERGROUND SOURCE.
- CONTRACTOR TO REMOVE OH FEEDS AND REMOVE EXISTING POLES.

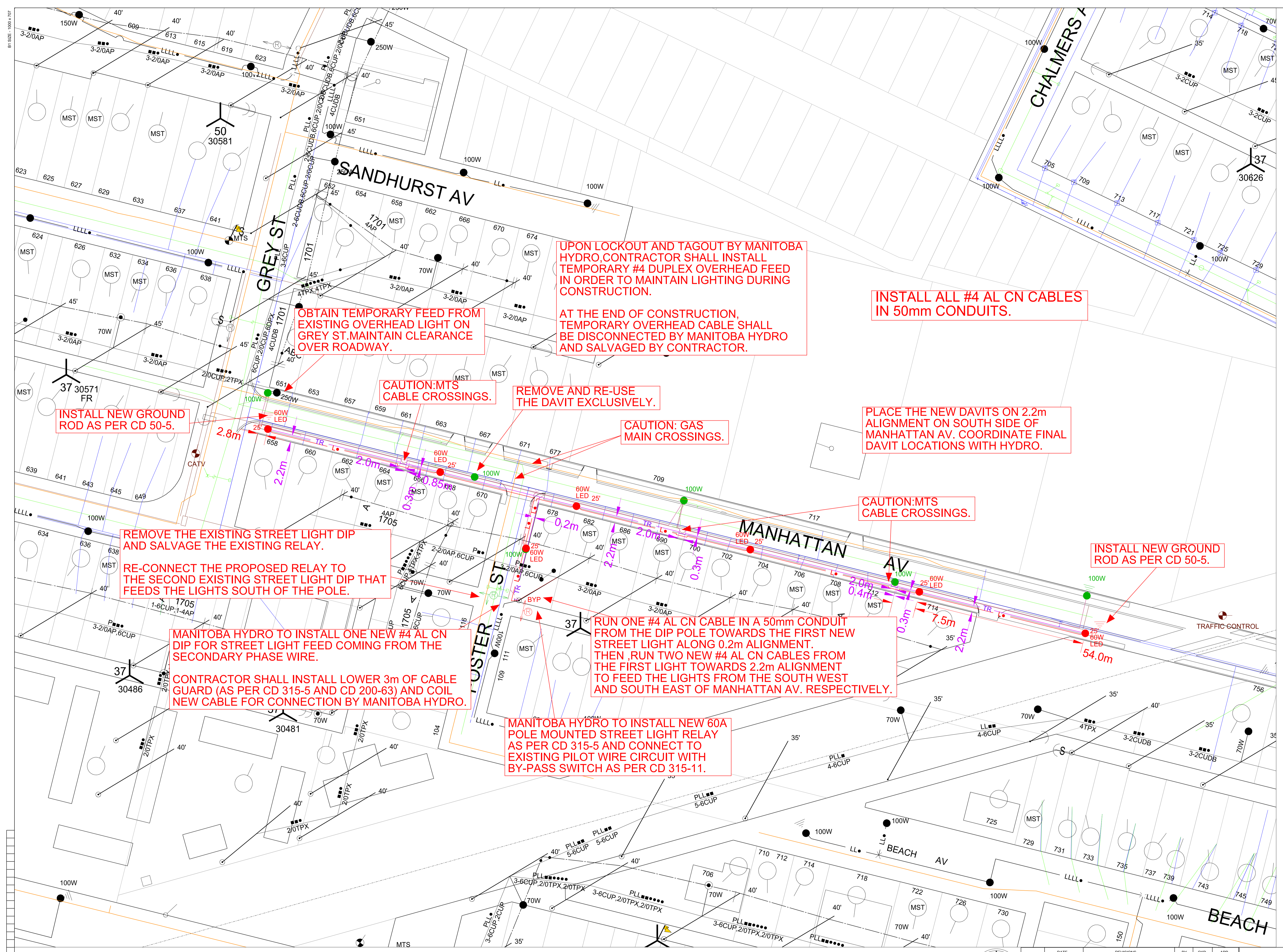
CONTACT	NAME	PHONE
DESIGN	SLAVA REVZIN	284-8100 ext. 1239
DISTRICT ENG TECH	CRAGO HRYSHO	360-5164
ENERGY SERVICES ADVISOR	TERRY MCCARTHY	360-4127
LIG CONSTRUCTION	JAYSON WITT	803-1165
OH CONSTRUCTION	WAYNE IRELAND	360-5786
CUSTOMER CONTRACT	RICK PHILLIPS	360-7018
CONNECTIONS	ALVARO SILVA	360-6214
TEMP. STRINGING	TERRY TABAK	360-7521

MAGENTA	PROPOSED TRENCH
RED	PROPOSED OBJECT
PINK	OBJECT TO BE ABANDONED
GREEN	OBJECT TO BE SALVAGED
BLACK	EXISTING OBJECT
LA ANNOTATION	1 - RR AL CN STREET LIGHTING CABLE
LL ANNOTATION	1 - 1/0 TRIPLEX STREET LIGHTING CABLE

INFO:
 NUMBER OF SCRAPPED DAVITS: 5
 NUMBER OF SALVAGED DAVITS: 1
 NUMBER OF NEW DAVITS: 6
 NUMBER OF NEW 60W LED HEADS: 7
 NUMBER OF 100W HPS SALVAGED HEADS: 6

COW TENDER 2016-R-03

PRELIMINARY NOT TO BE USED FOR CONSTRUCTION



UPON LOCKOUT AND TAGOUT BY MANITOBA HYDRO CONTRACTOR SHALL INSTALL TEMPORARY #4 DUPLEX OVERHEAD FEED IN ORDER TO MAINTAIN LIGHTING DURING CONSTRUCTION.
 AT THE END OF CONSTRUCTION, TEMPORARY OVERHEAD CABLE SHALL BE DISCONNECTED BY MANITOBA HYDRO AND SALVAGED BY CONTRACTOR.

INSTALL ALL #4 AL CN CABLES IN 50mm CONDUITS.

OBTAIN TEMPORARY FEED FROM EXISTING OVERHEAD LIGHT ON GREY ST. MAINTAIN CLEARANCE OVER ROADWAY.

REMOVE AND RE-USE THE DAVIT EXCLUSIVELY.

PLACE THE NEW DAVITS ON 2.2m ALIGNMENT ON SOUTH SIDE OF MANHATTAN AV. COORDINATE FINAL DAVIT LOCATIONS WITH HYDRO.

CAUTION: MTS CABLE CROSSINGS.

CAUTION: GAS MAIN CROSSINGS.

CAUTION: MTS CABLE CROSSINGS.

INSTALL NEW GROUND ROD AS PER CD 50-5.

REMOVE THE EXISTING STREET LIGHT DIP AND SALVAGE THE EXISTING RELAY.
 RE-CONNECT THE PROPOSED RELAY TO THE SECOND EXISTING STREET LIGHT DIP THAT FEEDS THE LIGHTS SOUTH OF THE POLE.

RUN ONE #4 AL CN CABLE IN A 50mm CONDUIT FROM THE DIP POLE TOWARDS THE FIRST NEW STREET LIGHT ALONG 0.2m ALIGNMENT. THEN, RUN TWO NEW #4 AL CN CABLES FROM THE FIRST LIGHT TOWARDS 2.2m ALIGNMENT TO FEED THE LIGHTS FROM THE SOUTH WEST AND SOUTH EAST OF MANHATTAN AV. RESPECTIVELY.

MANITOBA HYDRO TO INSTALL ONE NEW #4 AL CN DIP FOR STREET LIGHT FEED COMING FROM THE SECONDARY PHASE WIRE.

MANITOBA HYDRO TO INSTALL NEW 60A POLE MOUNTED STREET LIGHT RELAY AS PER CD 315-5 AND CONNECT TO EXISTING PILOT WIRE CIRCUIT WITH BY-PASS SWITCH AS PER CD 315-11.

CONTRACTOR SHALL INSTALL LOWER 3m OF CABLE GUARD (AS PER CD 315-5 AND CD 200-63) AND COIL NEW CABLE FOR CONNECTION BY MANITOBA HYDRO.

NOTE: INDICATION OF ALL UNDERGROUND UTILITIES IS FOR ILLUSTRATIVE PURPOSES ONLY. CONTACT THE APPLICABLE UTILITIES FOR SPECIFIC PLANT LOCATIONS AND CLEARANCES.

INFORMATION PERTAINING TO THE SIZE AND LOCATION OF MANITOBA HYDRO FACILITIES AND INSTALLATIONS IS ILLUSTRATIVE AND SHOULD NOT BE RELIED ON FOR THE PURPOSES OF ANY ACTIVITY BEING CONDUCTED AT OR NEAR THE IDENTIFIED HYDRO INSTALLATIONS. ALL LOCATIONS AND EQUIPMENT MUST BE VERIFIED BY APPROPRIATE HYDRO DISTRICT OFFICES PRIOR TO ANY PHYSICAL ACTIVITY UNDERTAKEN AT OR NEAR HYDRO INSTALLATIONS. A CURRENT WORK CLEARANCE REQUEST FORM CAN BE OBTAINED FROM THE DISTRICT OFFICE AND MUST BE ON SITE PRIOR TO THE COMMENCEMENT OF ANY EXCAVATIONS.



CALL BEFORE YOU DIG!!

DATE	REVISIONS	BY	CHKD.	APP.

DRAWING NUMBER	REFERENCE DRAWINGS	DRAWN	CHECK
XXXX	CITY OF WINNIPEG APPROVED PLAN	SR	

DATE	SCALE
2016/03/11	1:500

AREA NUMBER	MANITOBA HYDRO DISTRIBUTION PLANNING & DESIGN
5306	WBS # P:26560 NETWORK # 4303869
STATION NUMBER	1517
DISTRICT	RIVER EAST
FEEDER NUMBER	1705
STREET LIGHTING PROJECT	MANHATTAN AV FROM CPR RRX TO GREY ST.
SYSTEM VOLTAGE	2.4/4.16 KV
CONTRACTOR TO REPLACE EXISTING UNDERGROUND STREET LIGHTING PLANT.	
1-04707-DE-50000-0289	SHT. 1/1 REV. 00