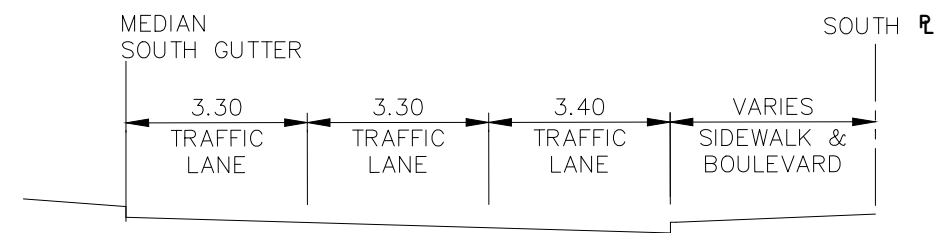
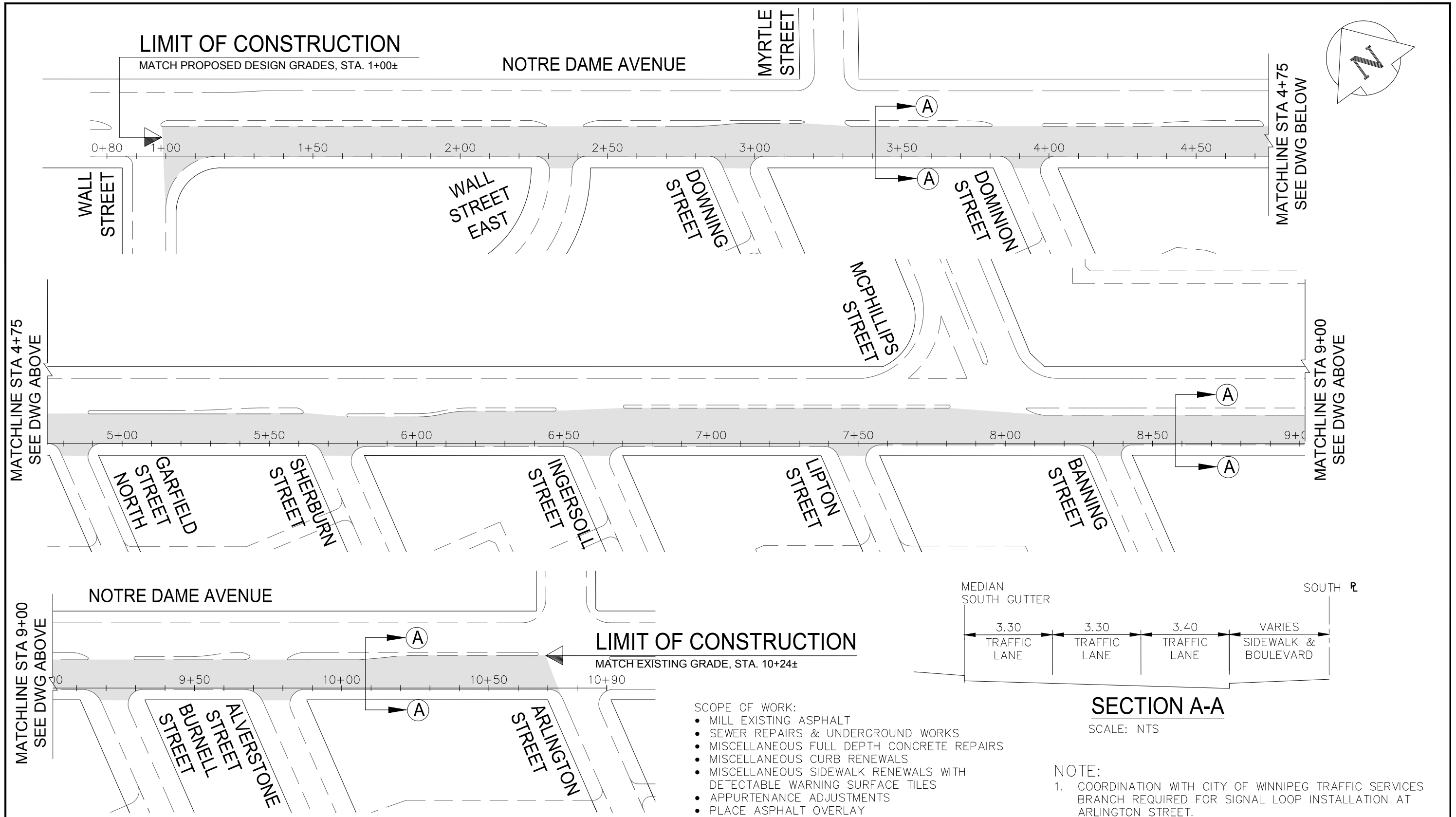


Apr 12, 2016 - 10:42am
 P:\5515100-5515199\5515116 - 2016 Regional Streets Package 16-C-01\MMM Drawings\Construction Drawings\5515116-sk-01 Notre Dame Mill and Fill 2016.01.05.dwg -tab: LAYOUT



SECTION A-A
 SCALE: NTS

- SCOPE OF WORK:
- MILL EXISTING ASPHALT
 - SEWER REPAIRS & UNDERGROUND WORKS
 - MISCELLANEOUS FULL DEPTH CONCRETE REPAIRS
 - MISCELLANEOUS CURB RENEWALS
 - MISCELLANEOUS SIDEWALK RENEWALS WITH DETECTABLE WARNING SURFACE TILES
 - APPURTENANCE ADJUSTMENTS
 - PLACE ASPHALT OVERLAY

NOTE:
 1. COORDINATION WITH CITY OF WINNIPEG TRAFFIC SERVICES BRANCH REQUIRED FOR SIGNAL LOOP INSTALLATION AT ARLINGTON STREET.

NOTE:
 These design documents are prepared solely for the use by the party with whom the design professional has entered into a contract and there are no representations of any kind made by the design professional to any party with whom the design professional has not entered into a contract.

WHOLE NUMBERS INDICATE MILLIMETRES
 DECIMALIZED NUMBERS INDICATE METRES

METRIC

MMM Group Limited
 Suite 111 - 93 Lombard Ave
 Winnipeg, MB R3B 3B1
 t. 204.943.3178
 f. 204.943.4948
 www.mmgrouplimited.com

CITY OF WINNIPEG		
2016 REGIONAL STREET RENEWAL PROGRAM		
NOTRE DAME AVENUE EAST BOUND - MILL AND FILL		
WALL STREET TO ARLINGTON STREET		
SCALE: NTS	DATE: 12-Apr-16	DWG. No. 5515116-SK-01