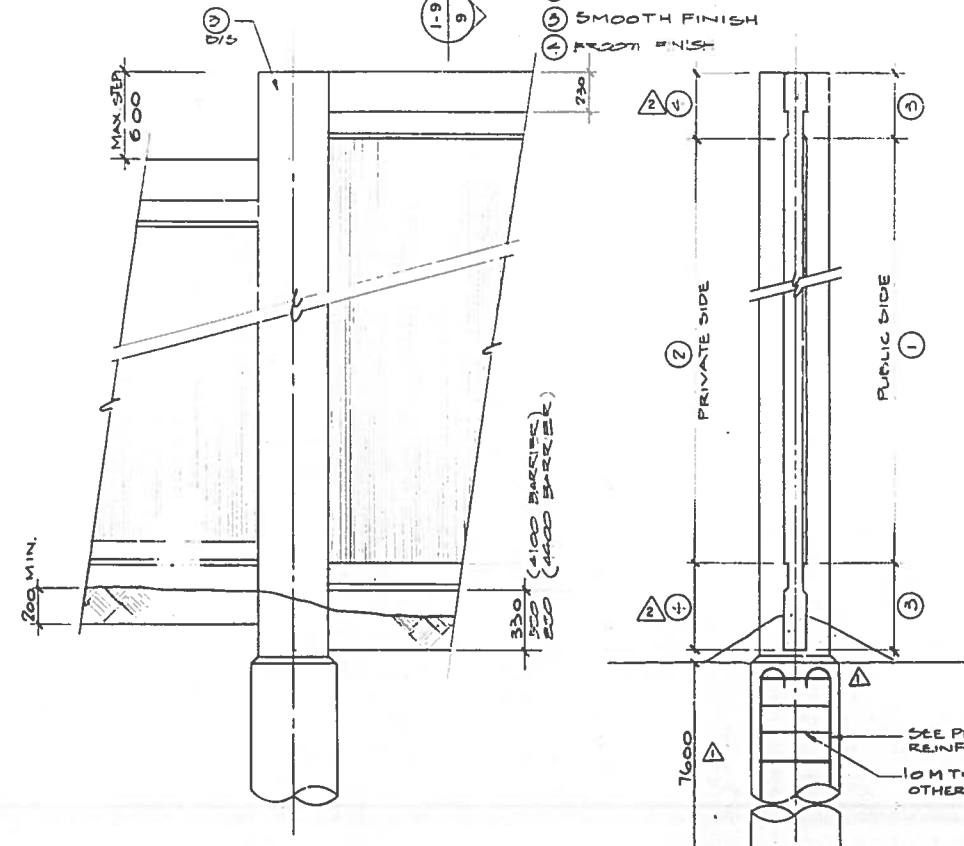


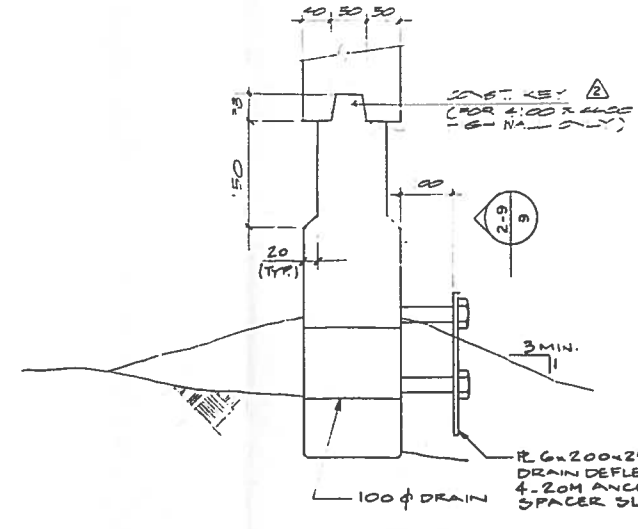
REID, CROWTHER & PARTNERS LIMITED
WINNIPEG
AS CONSTRUCTED
SIG. *M. Khan* DATE: 5/11/23

- FINISH SCHEDULE:**
- ① FORMED FINISH
 - ② EXPOSED AGGREGATE FINISH
 - ③ SMOOTH FINISH
 - ④ BROOM FINISH

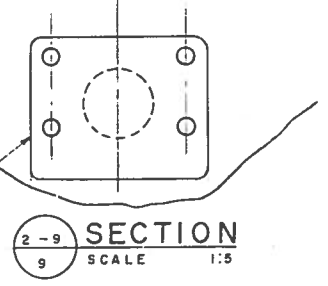


TYPICAL WALL ELEVATION

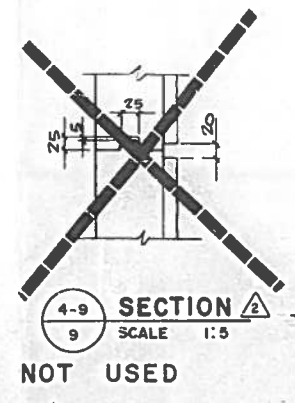
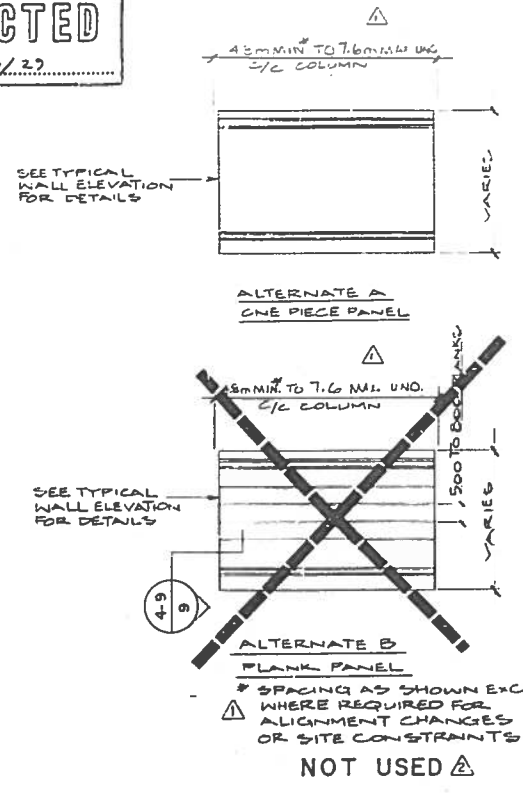
1-9 SECTION



TYPICAL DRAIN DETAIL
SCALE 1:5

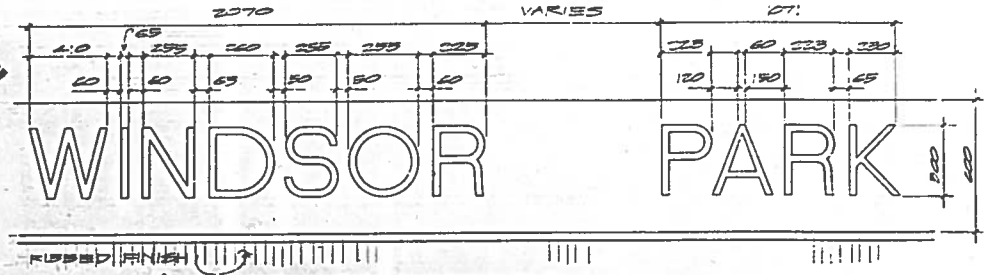


2-9 SECTION
SCALE 1:5

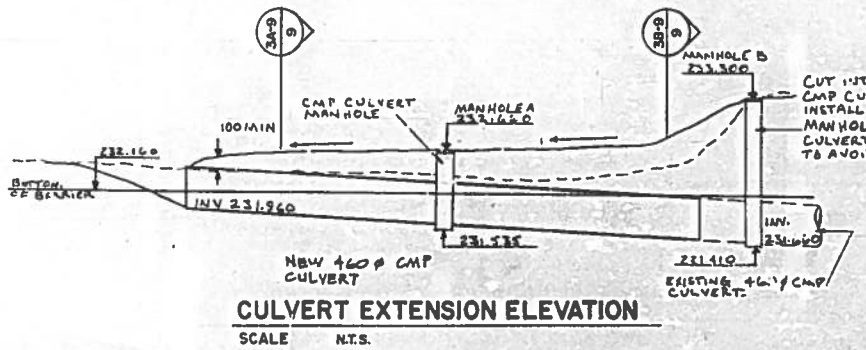


4-9 SECTION
SCALE 1:5
NOT USED

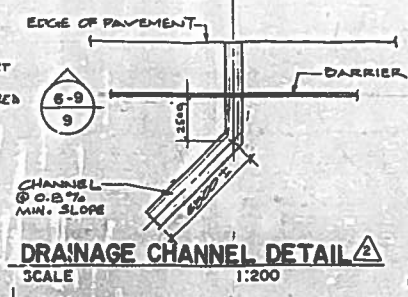
SECTION THRU IMPRINT



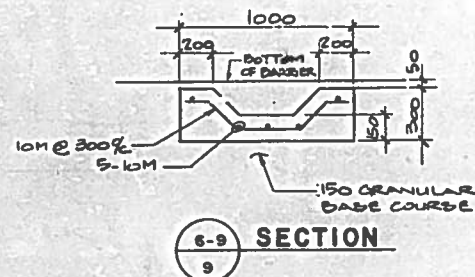
IDENTIFICATION IMPRINT DETAIL
N. T. S. (5 REQUIRED THUS LOCATION TO BE DETERMINED IN THE FIELD)



CULVERT EXTENSION ELEVATION
SCALE N.T.S.



DRAINAGE CHANNEL DETAIL
SCALE 1:200
NOT USED



6-9 SECTION
SCALE 1:100
NOT USED

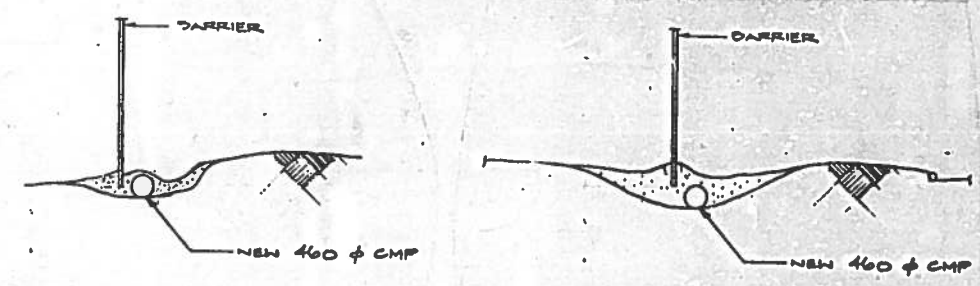
PILE REINFORCEMENT

THE FOLLOWING PILES WERE CONSTRUCTED WITH 6-25M STEEL VS 6-30M SPECIFIED AND WERE ACCEPTED AFTER A PILE LOAD TEST (REFER TO WOLF FROM MUZYK & PARTNERS PILE LAYOUT DRAWINGS: PILES #8 TO #118, #163 TO #158 AND #158 TO #163).

THE FOLLOWING PILES WERE CONSTRUCTED WITH 6-25M STEEL BARS VS 6-30M SPECIFIED BUT IN ACCORDANCE WITH FIELD INSTRUCTIONS NOS. 7 AND 8: PILES #164 TO #168 AND #169 TO #193.

BARRIER HEIGHT (m)	SPACING FROM FILE TO FILE					
	By 20 to 4.3 m	4.3 m to 6.1 m	6.1 m to 7.6 m	7.6 m to 9.1 m	9.1 m to 10.7 m	10.7 m to 12.2 m
2.2	6 - 25 m	500	6 - 25 m	500	6 - 25 m	500
2.5	6 - 25 m	500	6 - 25 m	500	6 - 30 m	500
2.8	6 - 25 m	500	6 - 30 m	500	6 - 30 m	500
3.0	6 - 25 m	500	6 - 30 m	500	6 - 30 m	500
3.1	6 - 25 m	500	6 - 30 m	500	6 - 30 m	500
3.3	6 - 30 m	500	6 - 30 m	500	6 - 30 m	500
3.5	6 - 30 m	500	6 - 30 m	500	6 - 30 m	500
3.6	6 - 30 m	500	6 - 30 m	500	6 - 30 m	500
4.1	6 - 30 m	500	6 - 30 m	500	6 - 30 m	500
4.4	6 - 30 m	500	6 - 30 m	500	6 - 30 m	500

- Notes:
1. Steel bars to be placed in a symmetric configuration.
 2. Pile length to be 7.6 m.
 3. 50% of the bars may terminate at 4.3 m.



2a-9 SECTION
SCALE 1:100

2b-9 SECTION
SCALE 1:100

Reid Crowther Reid Crowther & Partners Ltd. Professional Engineers

DESIGNED BY: W.J.M. CHECKED BY: M.K.
DRAWN BY: J.C. APPROVED BY: *M. Khan*

SCALE: 1:20 U.N.O.

DATE: MAY 22

ENGINEER'S SEAL
W. J. MacLulich
REGISTERED ENGINEER

CONSULTANT DRAWING NO. 61048-09

THE CITY OF WINNIPEG
WORKS AND OPERATIONS DIVISION
STREETS AND TRANSPORTATION DEPARTMENT

LAGIMODIERE BOULEVARD
NOISE ATTENUATION BARRIER

CITY DRAWING NUMBER: P2932-09-R1
SHEET 9 OF 11

WALL BARRIER DETAILS