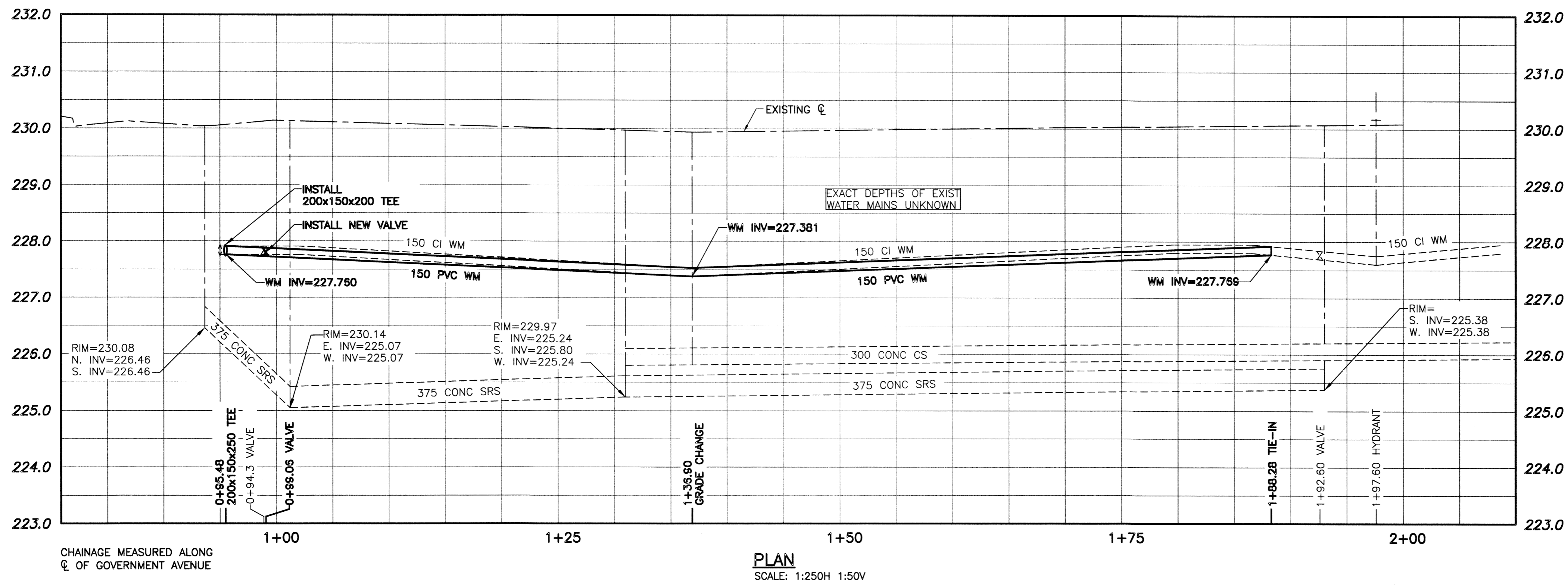
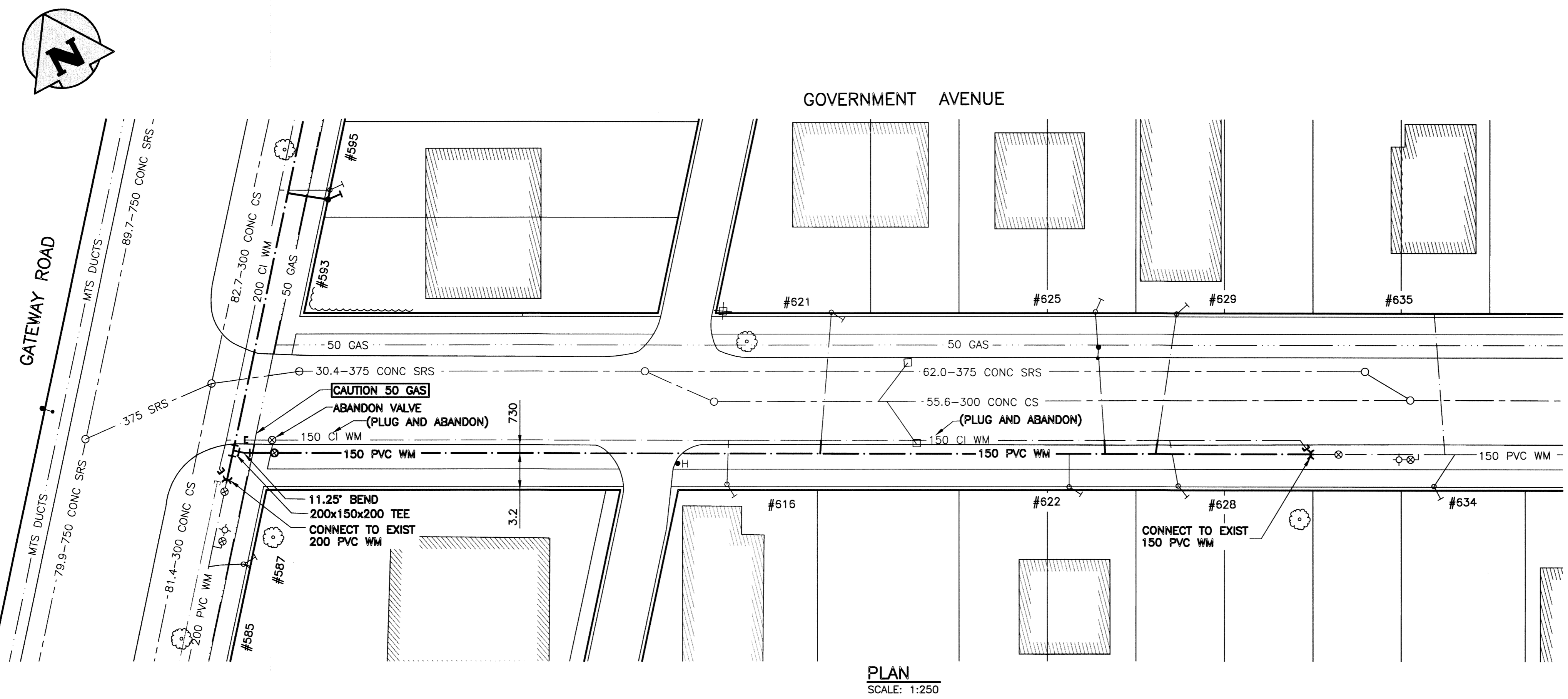


File Name: U:\PMS\15-0107-022\15-0107-022\_CALL.dwg - Tab: C02 Plotted By: glowen 16/03/22 [Tue 11:49am]



WATER SERVICE INFORMATION			
ADDRESS	SIZE & MATERIAL	CURB STOP MEASUREMENTS	CORP LOCATION
		SHORT	LONG
616 GOVERNMENT AVE	CU	2.29 EWHL	56.45 W OF HYD
621 GOVERNMENT AVE	20 CU	2.38 EWHL	48.46 W OF HYD
622 GOVERNMENT AVE		3.45 EWHL	
625 GOVERNMENT AVE	CU	0.46 EWHL	24.08 W OF HYD
628 GOVERNMENT AVE	20 CU	3.20 EWHL	0.30 W OF CS
629 GOVERNMENT AVE	20 CU	3.51 EWHL	19.51 W OF HYD
634 GOVERNMENT AVE	20 CU	2.44 EWHL	5.49 EWHL
635 GOVERNMENT AVE	20 CU	3.66 EWHL	2.74 EWHL

- CONSTRUCTION NOTES:**
- INSTALL WATER MAIN BY TRENCHLESS METHODS.
  - ALL MATERIALS TO CONFORM TO THE CITY OF WINNIPEG STANDARD CONSTRUCTION SPECIFICATIONS.
  - MINIMUM COVER TO TOP OF PROPOSED WATER MAIN IS 2.5m FROM STREET CENTERLINE.
  - INSTALL ALL HYDRANTS WITH FLANGE ELEVATION 50mm TO 150mm ABOVE FINISHED GRADE.
  - REPLACE ALL EXISTING LEAD SERVICES FROM THE PROPOSED WATER MAIN TO PROPERTY LINE.
  - BACKFILL UNDER OR WITHIN 1.0m OF PAVEMENTS, (INCLUDING SIDEWALKS) IS CLASS 3 BACKFILL EXCEPT AS NOTED. BACKFILL IN BOULEVARDS IS CLASS 5 BACKFILL.
  - WATER VALVES ARE CLOCKWISE TO CLOSE (BLACK OPERATING NUT).



**WARNING**

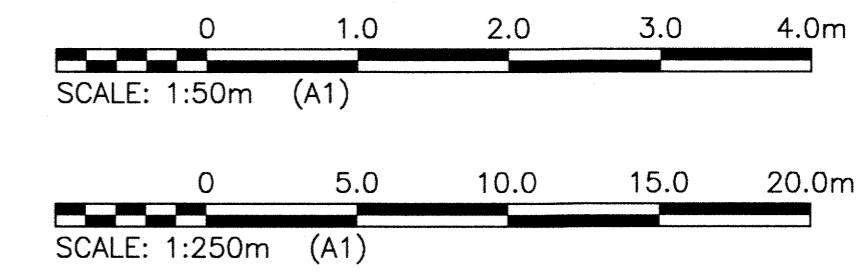
- NOTIFY THE GAS COMPANY OF THE PROPOSED LOCATION OF EXCAVATION.
- TAKE PRECAUTION TO AVOID DAMAGE TO GAS COMPANY INSTALLATIONS.
- SEE PROVINCIAL REGULATION 210/72 FOR DETAILS.

**PROPERTY LIMITS DELINEATION**

DELINEATION OF PROPERTY LIMITS AS SHOWN ON THIS DWG DOES NOT REPRESENT A "LEGAL SURVEY". KGS GROUP MAKES NO REPRESENTATION OR WARRANTY AS TO THE ACCURACY OF PROPERTY LIMITS DELINEATED ON THIS DWG, NOR ON THE DIMENSIONAL ACCURACY OF DWG FEATURES RELATIVE TO THOSE PROPERTY LIMITS.

**METRIC**

WHOLE NUMBERS INDICATE MILLIMETRES  
DECIMALIZED NUMBERS INDICATE METRES



EXISTING	LEGEND-PLAN	PROPOSED	EXISTING	LEGEND-PLAN	PROPOSED	EXISTING	LEGEND-PROFILE	PROPOSED
150 WM	WATER MAIN	150 WM	HYDRO	M.T.S.	150 WM	WATER MAIN	150 WM	HYDRANT, VALVE
300 LBS	LAND DRAINAGE SEWER	300 LBS	CONCRETE	CONCRETE	300 LBS	LAND DRAINAGE SEWER	300 LBS	LAND DRAINAGE SEWER
250 WWS	WASTE WATER SEWER	250 WWS	ASPHALT	ASPHALT	250 WWS	WASTE WATER SEWER	250 WWS	WASTE WATER SEWER
	MANHOLE		SIDEWALK	SIDEWALK		C PROFILE		C PROFILE
	CATCH BASIN		PLANNING	PLANNING		NORTH/WEST GUTTER		NORTH/WEST GUTTER
	CURB INLET		PROPERTY LINE	PROPERTY LINE		SOUTH/EAST GUTTER		SOUTH/EAST GUTTER
	BEND		SURVEY BAR	SURVEY BAR		N/W, S/E P'S		N/W, S/E P'S
	REDUCER		GAS	GAS		N/W, S/E TOP/CURB		N/W, S/E TOP/CURB
			CURB STOP	CURB STOP				
			TEE	TEE				

**LOCATION APPROVED UNDERGROUND STRUCTURES**

SUPV. U/G STRUCTURES COMMITTEE DATE

NOTE:  
LOCATION OF UNDERGROUND STRUCTURES AS SHOWN ARE BASED ON THE BEST INFORMATION AVAILABLE BUT NO GUARANTEE IS GIVEN THAT ALL EXISTING UTILITIES ARE SHOWN OR THAT THE GIVEN LOCATIONS ARE EXACT. CONFIRMATION OF EXISTENCE AND EXACT LOCATION OF ALL SERVICES MUST BE OBTAINED FROM THE INDIVIDUAL UTILITIES BEFORE PROCEEDING WITH CONSTRUCTION.

NO.	REVISIONS	DATE	BY
0	ISSUED FOR CONSTRUCTION	16/03/23	R30

**KGS GROUP CONSULTING ENGINEERS**

DESIGNED BY: MAT  
CHECKED BY: [Signature]  
DRAWN BY: DMW  
APPROVED BY: [Signature]

HOR. SCALE: 1:250  
VERTICAL: 1:50

RELEASED FOR CONSTRUCTION: [Signature]  
DATE: 16/03/23

**THE CITY OF WINNIPEG WATER AND WASTE DEPARTMENT**

PROJECT TITLE: 2016 WATER MAIN RENEWALS CONTRACT 3

SHEET OF 02 OF 11

COMPUTER FILE NAME: 15-0107-022\_C02

CITY DRAWING NUMBER: D-14261

CONSULTANT DRAWING NO.: 15-0107-022\_C02