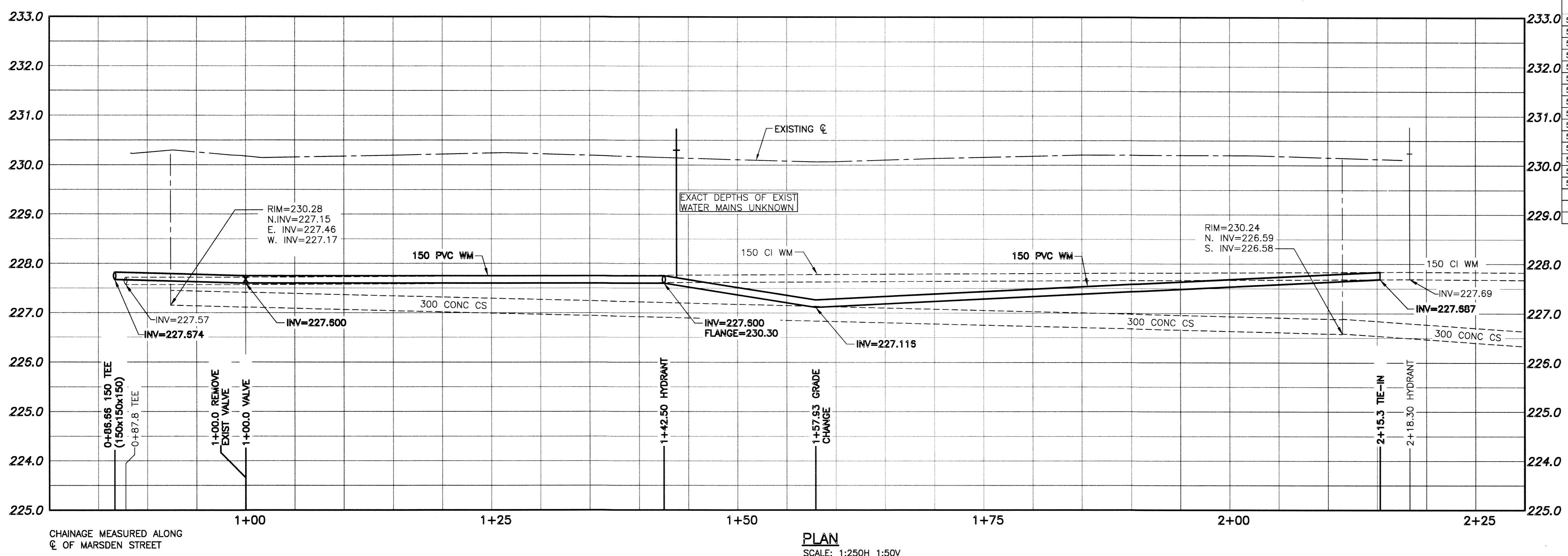
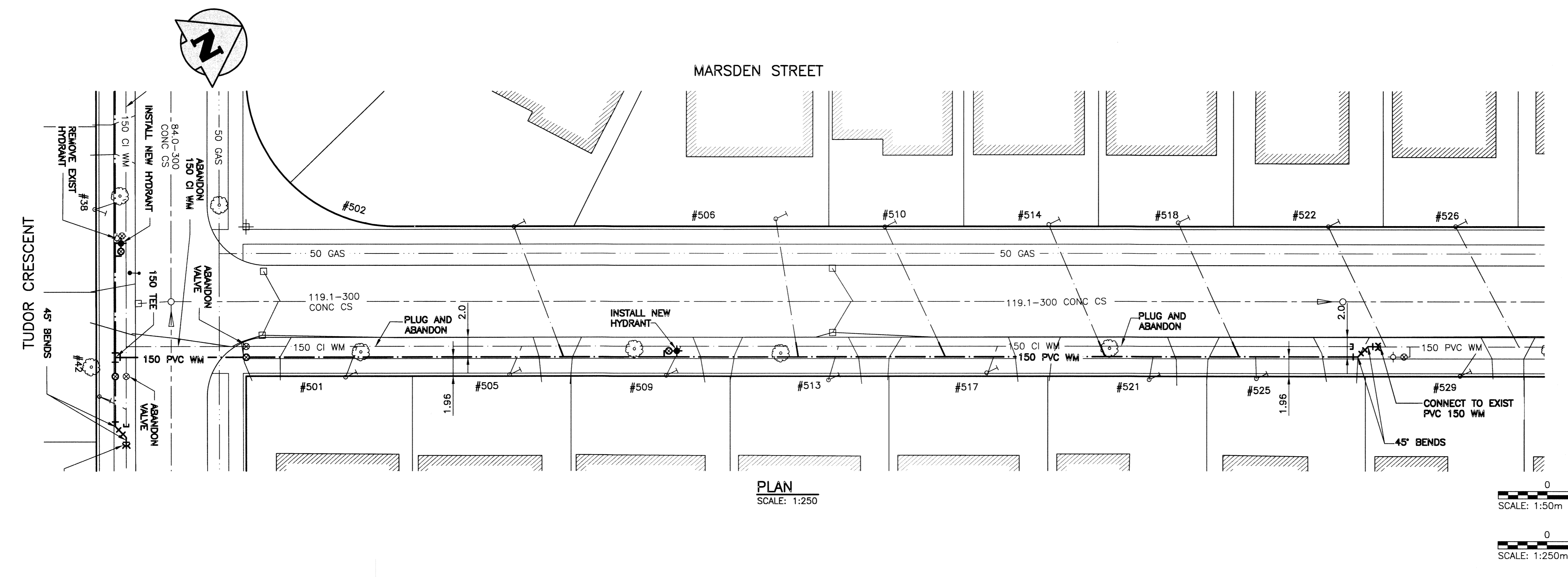


WATER SERVICE INFORMATION				
ADDRESS	SIZE & MATERIAL	CURB STOP MEASUREMENTS		CORP LOCATION
		SHORT	LONG	
501 MARSDEN ST	20 CU	5.30 SNHL		11.28 N OF VALVE
502 MARSDEN ST	20 CU	3.60 SNHL		84.73 S OF HYD
505 MARSDEN ST	20 CU	3.54 SNHL		28.04 N OF VALVE
506 MARSDEN ST	20 CU	3.75 SNHL		60.66 S OF HYD
509 MARSDEN ST	20 CU	4.11 SNHL		44.20 N OF VALVE
510 MARSDEN ST	20 CU	6.00 NSLL		46.02 S OF HYD
513 MARSDEN ST	20 CU	3.17 SNHL		56.39 S OF HYD
514 MARSDEN ST	20 CU	3.81 SNHL	15.00 SSLL	29.72 S OF HYD
517 MARSDEN ST	20 CU	3.20 SNHL		40.23 S OF HYD
518 MARSDEN ST	20 CU	3.51 SNHL		16.15 S OF HYD
521 MARSDEN ST	20 CU	2.59 SNHL		24.08 S OF HYD
522 MARSDEN ST	20 CU	1.58 SNHL		0.76 S OF HYD
525 MARSDEN ST	20 CU	2.93 SNHL		14.02 S OF HYD
526 MARSDEN ST	20 CU	3.66 SNLL		12.80 N OF HYD
529 MARSDEN ST	20 CU	3.26 SNHL	7.77 N OF HYD	1.22 SNHL



- CONSTRUCTION NOTES:**
1. INSTALL WATER MAIN BY TRENCHLESS METHODS.
 2. ALL MATERIALS TO CONFORM TO THE CITY OF WINNIPEG STANDARD CONSTRUCTION SPECIFICATIONS.
 3. MINIMUM COVER TO TOP OF PROPOSED WATER MAIN IS 2.5m FROM STREET CENTERLINE.
 4. INSTALL ALL HYDRANTS WITH FLANGE ELEVATION 50mm TO 150mm ABOVE FINISHED GRADE.
 5. REPLACE ALL EXISTING LEAD SERVICES FROM THE PROPOSED WATER MAIN TO PROPERTY LINE.
 6. BACKFILL UNDER OR WITHIN 1.0m OF PAVEMENTS, (INCLUDING SIDEWALKS) IS CLASS 3 BACKFILL EXCEPT AS NOTED. BACKFILL IN BOULEVARDS IS CLASS 5 BACKFILL.
 7. WATER VALVES ARE CLOCKWISE TO CLOSE (BLACK OPERATING NUT).



WARNING

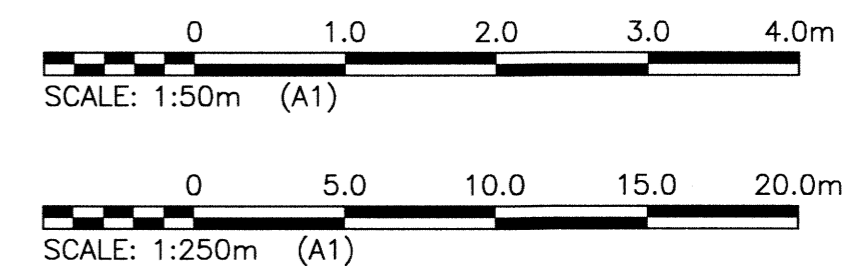
1. NOTIFY THE GAS COMPANY OF THE PROPOSED LOCATION OF EXCAVATION.
2. TAKE PRECAUTION TO AVOID DAMAGE TO GAS COMPANY INSTALLATIONS.
3. SEE PROVINCIAL REGULATION 210/72 FOR DETAILS.

PROPERTY LIMITS DELINEATION

DELINEATION OF PROPERTY LIMITS AS SHOWN ON THIS DWG DOES NOT REPRESENT A "LEGAL SURVEY". KGS GROUP MAKES NO REPRESENTATION OR WARRANTY AS TO THE ACCURACY OF PROPERTY LIMITS DELINEATED ON THIS DWG, NOR ON THE DIMENSIONAL ACCURACY OF DWG FEATURES RELATIVE TO THOSE PROPERTY LIMITS.

METRIC

WHOLE NUMBERS INDICATE MILLIMETRES
DECIMALIZED NUMBERS INDICATE METRES



APGM
Certificate of Authorization
KGS Group
No. 245

File Name: U:\PMS\15-0107-022\15-0107-022_CALL.dwg - Tab: C05 Plotted By: glawen 16/03/22 [Tue 11:50am]

150 WM	WATER MAIN	150 WM	HYDRO	150 WM	WATER MAIN	150 WM
⊕	HYDRANT	⊕	M.T.S.	⊕	HYDRANT, VALVE	⊕
⊙	VALVE	⊙	CONCRETE	⊕	LAND DRAINAGE SEWER	⊕
300 LDS	LAND DRAINAGE SEWER	300 LDS	ASPHALT	300 LDS	WASTE WATER SEWER	300 LDS
250 WWS	WASTE WATER SEWER	250 WWS	SIDEWALK	250 WWS	C PROFILE	250 WWS
○	MANHOLE	○	PLANNING	□	NORTH/WEST GUTTER	□
□	CATCH BASIN	□	PROPERTY LINE	○	SOUTH/EAST GUTTER	○
▽	CURB INLET	▽	SURVEY BAR	◇, ○	N/W, S/E R'S	◇, ○
∩	BEND	∩	GAS	□, ○	N/W, S/E TOP/CURB	□, ○
∩	REDUCER	∩	CURB STOP	∩	TEE	∩
J	TEE	J	EXISTING	∩	LEGEND-PROFILE	∩
EXISTING	LEGEND-PLAN	PROPOSED	EXISTING	LEGEND-PLAN	PROPOSED	EXISTING

LOCATION APPROVED UNDERGROUND STRUCTURES

SUPV. U/G STRUCTURES COMMITTEE DATE

NOTE:
LOCATION OF UNDERGROUND STRUCTURES AS SHOWN ARE BASED ON THE BEST INFORMATION AVAILABLE BUT NO GUARANTEE IS GIVEN THAT ALL EXISTING UTILITIES ARE SHOWN OR THAT THE GIVEN LOCATIONS ARE EXACT. CONFIRMATION OF EXISTENCE AND EXACT LOCATION OF ALL SERVICES MUST BE OBTAINED FROM THE INDIVIDUAL UTILITIES BEFORE PROCEEDING WITH CONSTRUCTION.

B.M. KGS BASE ELEV.	DWGS BASE ON C.S.R.S. NAD 83 SYSTEM UTM GRID.
DESIGNED BY MAT	CHECKED BY BOM
DRAWN BY DMW	APPROVED BY RBO
HOR. SCALE: 1:250	RELEASED FOR CONSTRUCTION: [Signature]
VERTICAL: 1:50	DATE: 16/03/22
ISSUED FOR CONSTRUCTION	DATE: 16/03/22
NO. REVISIONS	DATE BY

KGS GROUP
CONSULTING ENGINEERS

ENGINEER'S SEAL
PROVINCE OF MANITOBA
R.B. OFFMAN
Member Manitoba Professional Engineer

CONSULTANT DRAWING NO. 15-0107-022_C05

THE CITY OF WINNIPEG
WATER AND WASTE DEPARTMENT

Winnipeg

PROJECT TITLE: 2016 WATER MAIN RENEWALS CONTRACT 3
MARSDEN STREET TUDOR CRESCENT TO MIDPOINT OF BLOCK

SHEET 05 OF 11
COMPUTER FILE NAME: 15-0107-022_C05
CITY DRAWING NUMBER: D-14264