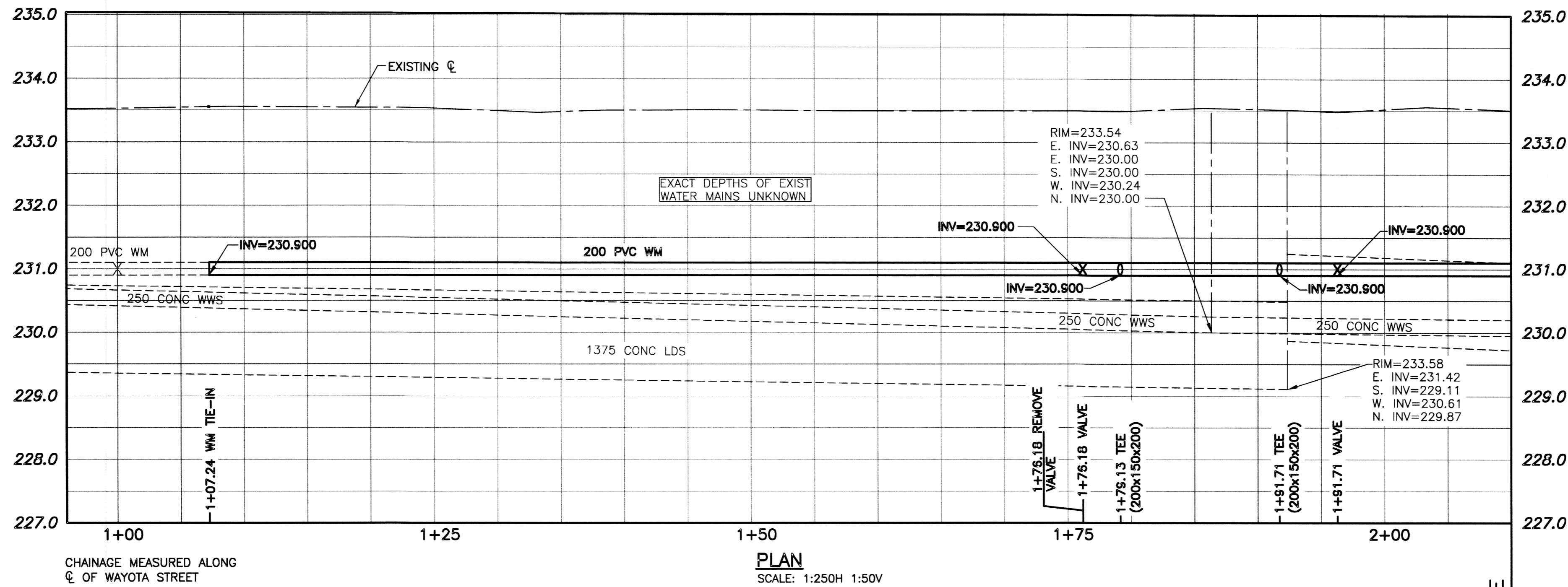
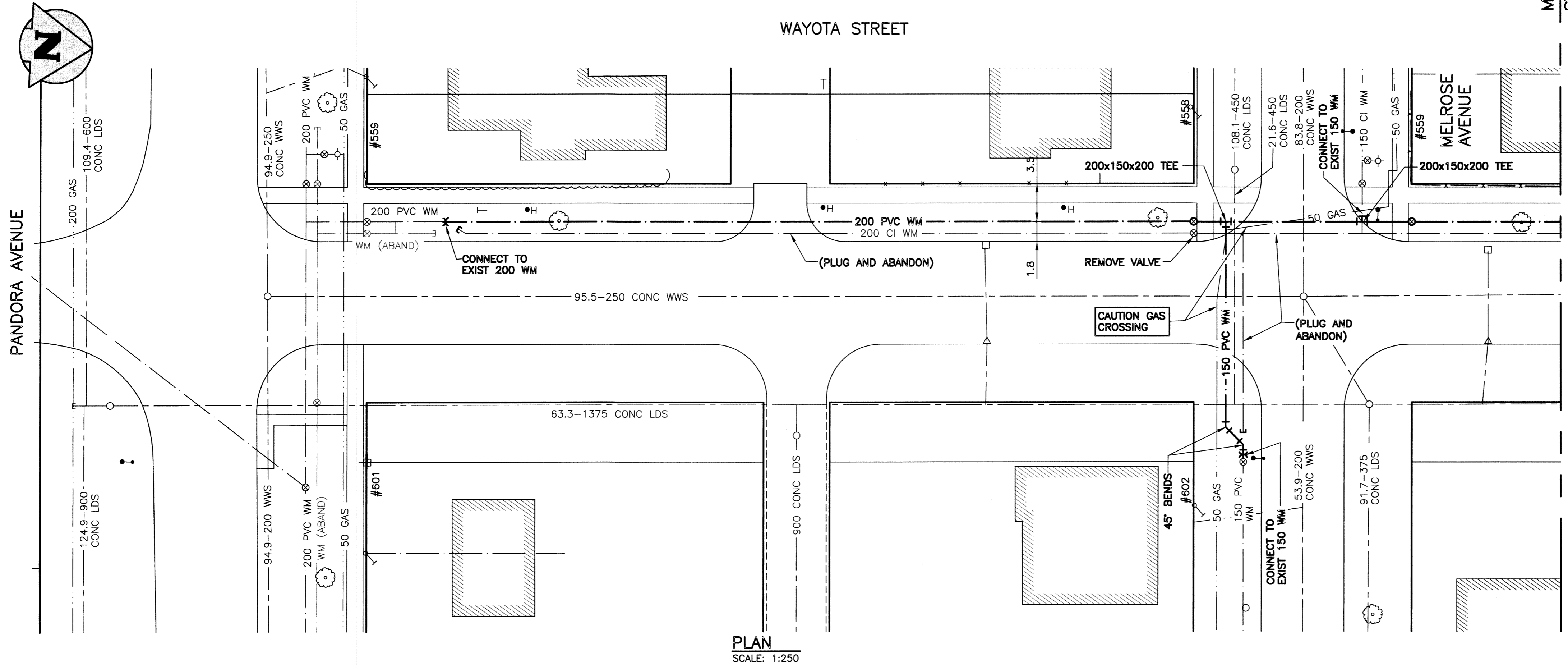


File Name: U:\PMS\15-0107-022\15-0107-022_CALL.dwg - Tab: C10 Plotted By: glowen 16/03/22 [Tue 11:53am]

WATER SERVICE INFORMATION				
ADDRESS	SIZE & MATERIAL	CURB STOP MEASUREMENTS		CORP LOCATION
		SHORT	LONG	
558 MELROSE AVE E		2.74	EWHL	
559 MELROSE AVE E		3.51	WEHL	
602 MELROSE AVE E		2.90	EWHL	



- CONSTRUCTION NOTES:**
- INSTALL WATER MAIN BY TRENCHLESS METHODS.
 - ALL MATERIALS TO CONFORM TO THE CITY OF WINNIPEG STANDARD CONSTRUCTION SPECIFICATIONS.
 - MINIMUM COVER TO TOP OF PROPOSED WATER MAIN IS 2.5m FROM STREET CENTERLINE.
 - INSTALL ALL HYDRANTS WITH FLANGE ELEVATION 50mm TO 150mm ABOVE FINISHED GRADE.
 - REPLACE ALL EXISTING LEAD SERVICES FROM THE PROPOSED WATER MAIN TO PROPERTY LINE.
 - BACKFILL UNDER OR WITHIN 1.0m OF PAVEMENTS, (INCLUDING SIDEWALKS) IS CLASS 3 BACKFILL EXCEPT AS NOTED. BACKFILL IN BOULEVARDS IS CLASS 5 BACKFILL.
 - WATER VALVES ARE CLOCKWISE TO CLOSE (BLACK OPERATING NUT).



WARNING

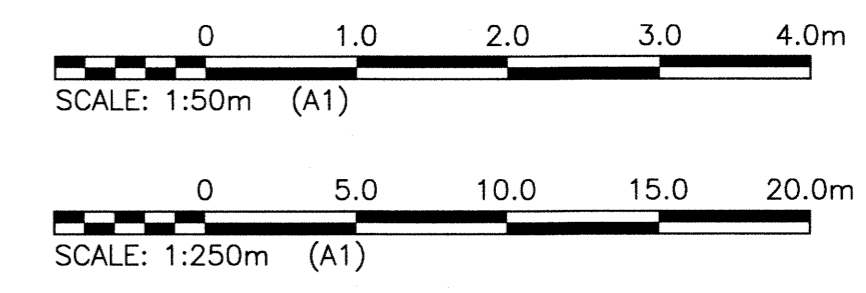
- NOTIFY THE GAS COMPANY OF THE PROPOSED LOCATION OF EXCAVATION.
- TAKE PRECAUTION TO AVOID DAMAGE TO GAS COMPANY INSTALLATIONS.
- SEE PROVINCIAL REGULATION 210/72 FOR DETAILS.

PROPERTY LIMITS DELINEATION

DELINEATION OF PROPERTY LIMITS AS SHOWN ON THIS DWG DOES NOT REPRESENT A "LEGAL SURVEY". KGS GROUP MAKES NO REPRESENTATION OR WARRANTY AS TO THE ACCURACY OF PROPERTY LIMITS DELINEATED ON THIS DWG, NOR ON THE DIMENSIONAL ACCURACY OF DWG FEATURES RELATIVE TO THOSE PROPERTY LIMITS.

METRIC

WHOLE NUMBERS INDICATE MILLIMETRES
DECIMALIZED NUMBERS INDICATE METRES



EXISTING	LEGEND-PLAN	PROPOSED	EXISTING	LEGEND-PLAN	PROPOSED	EXISTING	LEGEND-PROFILE	PROPOSED
150 WM	WATER MAIN	150 WM	HYDRO	HYDRO	150 WM	WATER MAIN	WATER MAIN	150 WM
Hydrant	HYDRANT	Hydrant	M.T.S.	M.T.S.	Hydrant	HYDRANT, VALVE	HYDRANT, VALVE	Hydrant
Valve	VALVE	Valve	CONCRETE	CONCRETE	Valve	LAND DRAINAGE SEWER	LAND DRAINAGE SEWER	Valve
300 Lds	LAND DRAINAGE SEWER	300 Lds	ASPHALT	ASPHALT	300 Lds	WASTE WATER SEWER	WASTE WATER SEWER	300 Lds
250 WWS	WASTE WATER SEWER	250 WWS	SIDEWALK	SIDEWALK	250 WWS	C PROFILE	C PROFILE	250 WWS
Manhole	MANHOLE	Manhole	PLANNING	PLANNING	Manhole	NORTH/WEST GUTTER	NORTH/WEST GUTTER	Manhole
Catch Basin	CATCH BASIN	Catch Basin	PROPERTY LINE	PROPERTY LINE	Manhole	SOUTH/EAST GUTTER	SOUTH/EAST GUTTER	Manhole
Curb Inlet	CURB INLET	Curb Inlet	SURVEY BAR	SURVEY BAR	Manhole	N/W, S/E R'S	N/W, S/E R'S	Manhole
Bend	BEND	Bend	GAS	GAS	Manhole	N/W, S/E TOP/CURB	N/W, S/E TOP/CURB	Manhole
Reducer	REDUCER	Reducer	CURB STOP	CURB STOP	Manhole	TEE	TEE	Manhole
TEE	TEE	TEE	TEE	TEE	Manhole			Manhole

LOCATION APPROVED UNDERGROUND STRUCTURES

SUPV. U/G STRUCTURES COMMITTEE DATE

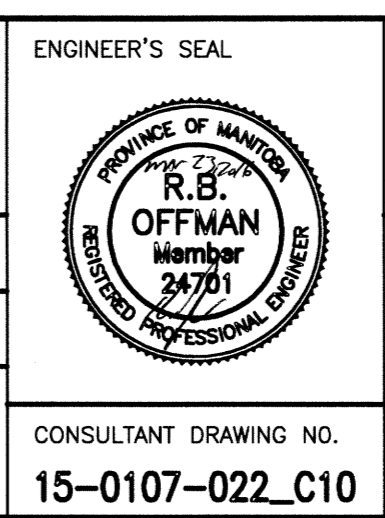
NOTE:
LOCATION OF UNDERGROUND STRUCTURES AS SHOWN ARE BASED ON THE BEST INFORMATION AVAILABLE BUT NO GUARANTEE IS GIVEN THAT ALL EXISTING UTILITIES ARE SHOWN OR THAT THE GIVEN LOCATIONS ARE EXACT. CONFIRMATION OF EXISTENCE AND EXACT LOCATION OF ALL SERVICES MUST BE OBTAINED FROM THE INDIVIDUAL UTILITIES BEFORE PROCEEDING WITH CONSTRUCTION.

B.M. KGS BASE ELEV.

DWGS BASE ON C.S.R.S. NAD 83 SYSTEM UTM GRID.

KGS GROUP CONSULTING ENGINEERS

DESIGNED BY: MAT
DRAWN BY: DMW
CHECKED BY: B.M.
APPROVED BY: R.B.O.
HOR. SCALE: 1:250
VERTICAL: 1:50
ISSUED FOR CONSTRUCTION: 16/03/23
DATE: 16/03/15



THE CITY OF WINNIPEG WATER AND WASTE DEPARTMENT

PROJECT TITLE: 2016 WATER MAIN RENEWALS CONTRACT 3

WAYOTA STREET
PANDORA AVENUE TO REGENT AVENUE
PANDORA AVENUE TO STA 2+10

CONSULTANT DRAWING NO. 15-0107-022_C10

SHEET 10 OF 11
COMPUTER FILE NAME: 15-0107-022_C10
CITY DRAWING NUMBER: D-14269