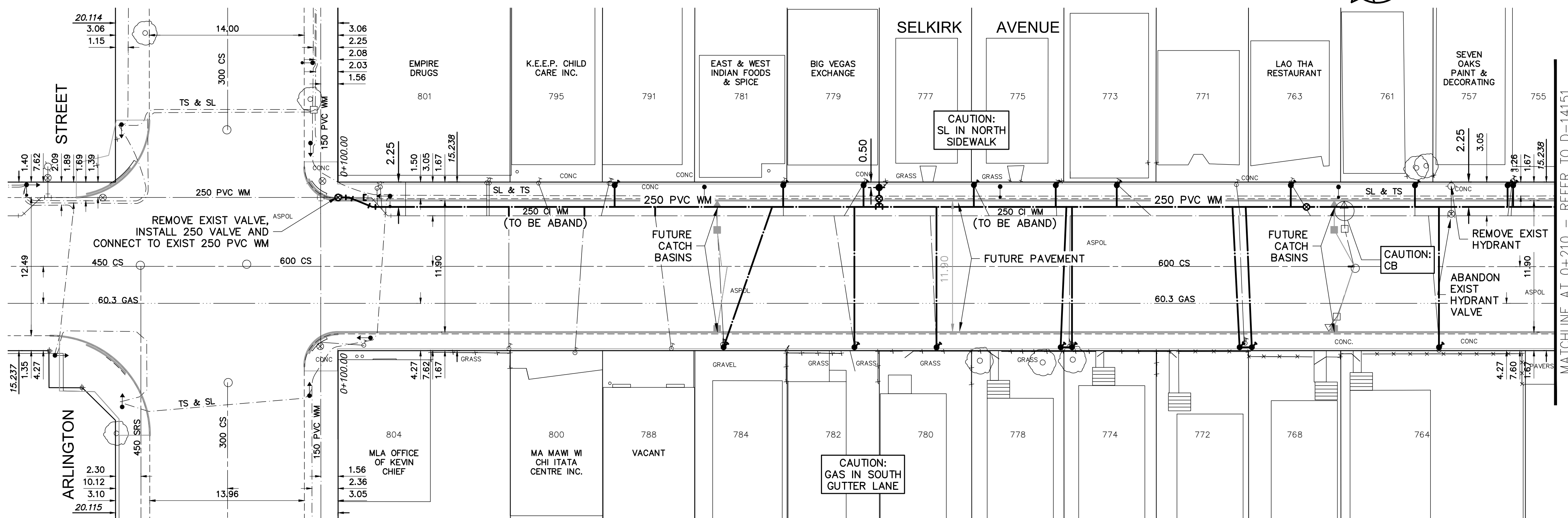


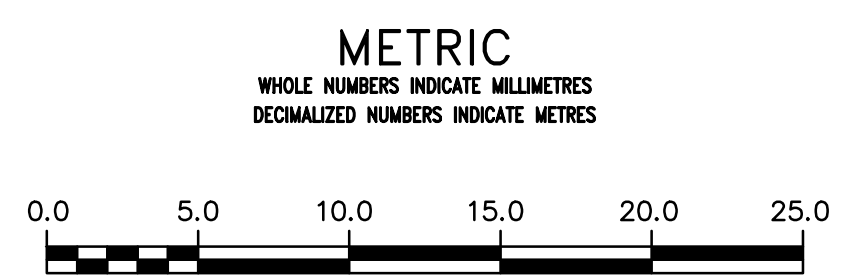
NOTE: CHAINAGES SHOWN ARE ALONG N. R. OF SELKIRK AVENUE



ADDRESS	SIZE (mm) MATERIAL (STREET)	SIZE (mm) MATERIAL (PROP.)	SHORT & LONG MEASUREMENT	CORPORATION LOCATION	REMARKS
804 SELKIRK AV	20	25	2.6 EEL OF ARLINGTON	0.3 N S/C	SERVICED OFF ARLINGTON
801 SELKIRK AV	20	12	2.6 EWL OF FOUNDATION	OPP S/C	
800 SELKIRK AV	25	25	22.3 EEL ARLINGTON	OPP S/C	
795 SELKIRK AV	CU	CU	20	1.1 E OF S/C	REVERSE TAP
791 SELKIRK AV	16	12	25.0 EEL OF ARLINGTON	1.2 W OF S/C	RENEW TO PROPERTY
788 SELKIRK AV	20	20	28.7 EEL OF ARLINGTON	OPP S/C	
784 SELKIRK AV	16	12	2.3 WEL OF STORE	OPP S/C	RENEW TO PROPERTY
782 SELKIRK AV	16	16	146.9 W/LV OF PARR	OPP S/C	RENEW TO PROPERTY
781 SELKIRK AV	12	12	0.9 EWL OF HOUSE	OPP S/C	RENEW TO PROPERTY
780 SELKIRK AV	12	12	1.5 W/LL	OPP S/C	RENEW TO PROPERTY
779 SELKIRK AV	12	12	40.2 EEL OF ARLINGTON	OPP S/C	RENEW TO PROPERTY
778 SELKIRK AV	12	12	0.6 W/LV OF #779	0.9 W OF S/C	RENEW TO PROPERTY
777 SELKIRK AV	12	12	0.6 WEL OF HOUSE	OPP S/C	RENEW TO PROPERTY
775 SELKIRK AV	12	12	45.7 EEL OF ARLINGTON	1.5 E OF S/C	RENEW TO PROPERTY
774 SELKIRK AV	12	12	1.2 WEL OF BLDG	OPP S/C	RENEW TO PROPERTY
773 SELKIRK AV	12	20	1.0 W/E PL #778	25.7 W OF 1ST MH W OF PARR	BRANCH WITH 778
772 SELKIRK AV	12	12	57.3 EEL OF ARLINGTON	2.1 E OF S/C	RENEW TO PROPERTY
771 SELKIRK AV	12	20	1.5 EEL OF HOUSE	OPP S/C	RENEW TO PROPERTY
768 SELKIRK AV	16	12	64.9 EEL OF ARLINGTON	OPP S/C	RENEW TO PROPERTY
764 SELKIRK AV	16	12	0.8 EEL OF HOUSE	2.1 E OF S/C	RENEW TO PROPERTY
763 SELKIRK AV	12	12	0.8 W/E PL #778	25.7 W OF 1ST MH W OF PARR	BRANCH WITH 778
761 SELKIRK AV	12	12	71.3 EEL OF ARLINGTON	2.1 E OF S/C	RENEW TO PROPERTY
757 SELKIRK AV	16	12	3.0 WEL OF HOUSE	OPP S/C	RENEW TO PROPERTY
755 SELKIRK AV	20	12	81.4 EEL OF ARLINGTON ST	OPP S/C	BRANCH WITH 768
	20	20	0.3 WEL OF HOUSE	OPP S/C	RENEW TO PROPERTY
	20	20	81.4 E OF ARLINGTON	OPP S/C	RENEW TO PROPERTY
	CU	CU	0.5 WEL OF BLDG	OPP S/C	RENEW TO PROPERTY
	16	12	81.4 EEL ARLINGTON ST	OPP S/C	BRANCH WITH 772
	16	12	0.3 WEL OF HOUSE	OPP S/C	RENEW TO PROPERTY
	16	12	99.5 EEL ARLINGTON	OPP S/C	RENEW TO PROPERTY
	12	20	93.9 EEL OF PARR	0.6 E OF S/C	RENEW TO PROPERTY
	12	12	0.3 EEL OF FRONT DOOR	OPP S/C	RENEW TO PROPERTY
	12	12	83.8 W/LV OF PARR	OPP S/C	RENEW TO PROPERTY
	20	20	3.0 EEL OF HOUSE	OPP S/C	RENEW TO PROPERTY
	CU	CU	75.4 W/LV OF PARR	OPP S/C	DBL WITH 755
	20	12	0.5 EWL OF BASEMENT	OPP S/C	RENEW TO PROPERTY
	CU	CU	75.1 W/LV OF PARR	OPP S/C	BRANCH WITH 757
	CU	CU	0.5 EWL OF BASEMENT	OPP S/C	RENEW TO PROPERTY

NOTE: REPLACE ALL EXISTING LEAD SERVICES FROM THE PROPOSED WATER MAIN TO PROPERTY LINE.
 RECONNECT ALL OTHER SERVICES UNLESS NOTED.
 LOCATION OF WATER SERVICES SHOWN ON DRAWINGS ARE APPROXIMATE.
 THE CONTRACTOR SHALL FIELD LOCATE ALL WATER SERVICES PRIOR TO CONSTRUCTION.

ALL VALVES TO BE COUNTER-CLOCKWISE TO CLOSE (RED OPERATING NUT)



APECM
 Certificate of Authorization
 AECOM Canada Ltd.
 No. 4671 Date: 16/01/27

WARNING
 IF POWER EQUIPMENT OR EXPLOSIVES ARE TO BE USED FOR EXCAVATION ON THIS PROJECT THE CONTRACTOR MUST:
 1) NOTIFY THE GAS COMPANY OF THE PROPOSED LOCATION OF EXCAVATION.
 2) TAKE PRECAUTION TO AVOID DAMAGE TO GAS COMPANY INSTALLATIONS.
 SEE PROVINCIAL REGULATION 210/72 FOR DETAILS

LOCATION APPROVED UNDERGROUND STRUCTURES
 SUPV. U/G STRUCTURES COMMITTEE DATE
 NOTE:
 LOCATION OF UNDERGROUND STRUCTURES AS SHOWN ARE BASED ON THE BEST INFORMATION AVAILABLE BUT NO GUARANTEE IS GIVEN THAT ALL EXISTING UTILITIES ARE SHOWN OR THAT THE GIVEN LOCATIONS ARE EXACT. CONFIRMATION OF EXISTENCE AND EXACT LOCATION OF ALL SERVICES MUST BE OBTAINED FROM THE INDIVIDUAL UTILITIES BEFORE PROCEEDING WITH CONSTRUCTION.

B.M. 26-020
 ELEV. 232.072m
 N.W. Cor. Selkirk Ave. and Powers St., Brass Plug in Conc. Pile, 2.4m E. of W. Selkirk Ave. and 0.3m N. of N.E. of Selkirk Ave.

NO.	ISSUED FOR	DATE	BY
0	ISSUED FOR TENDER	16/01/27	GSK
A	ISSUED FOR REVIEW	16/01/14	GSK

AECOM

DESIGNED BY	HC	CHECKED BY	GSK
DRAWN BY	JP	APPROVED BY	AN
SCALE:	HORIZONTAL 1:250	RELEASED FOR CONSTRUCTION	
VERTICAL	1:50	DATE	

PLOT DATE: 2016 01 27

ENGINEER'S SEAL
K.W. FITCHETT
 REGISTERED PROFESSIONAL ENGINEER

THE CITY OF WINNIPEG
 WATER AND WASTE DEPARTMENT
 ENGINEERING DIVISION

SELKIRK AVENUE
 ARLINGTON STREET TO SALTER STREET
 PAVEMENT RECONSTRUCTION

2016 WATER MAIN RENEWAL CONTRACT A-2 ARLINGTON ST TO MCGREGOR ST
 ARLINGTON ST. TO 71.1m WEST OF PARR ST.

SHEET 2 OF 6
 CITY DRAWING NUMBER
 D-14150