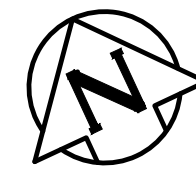
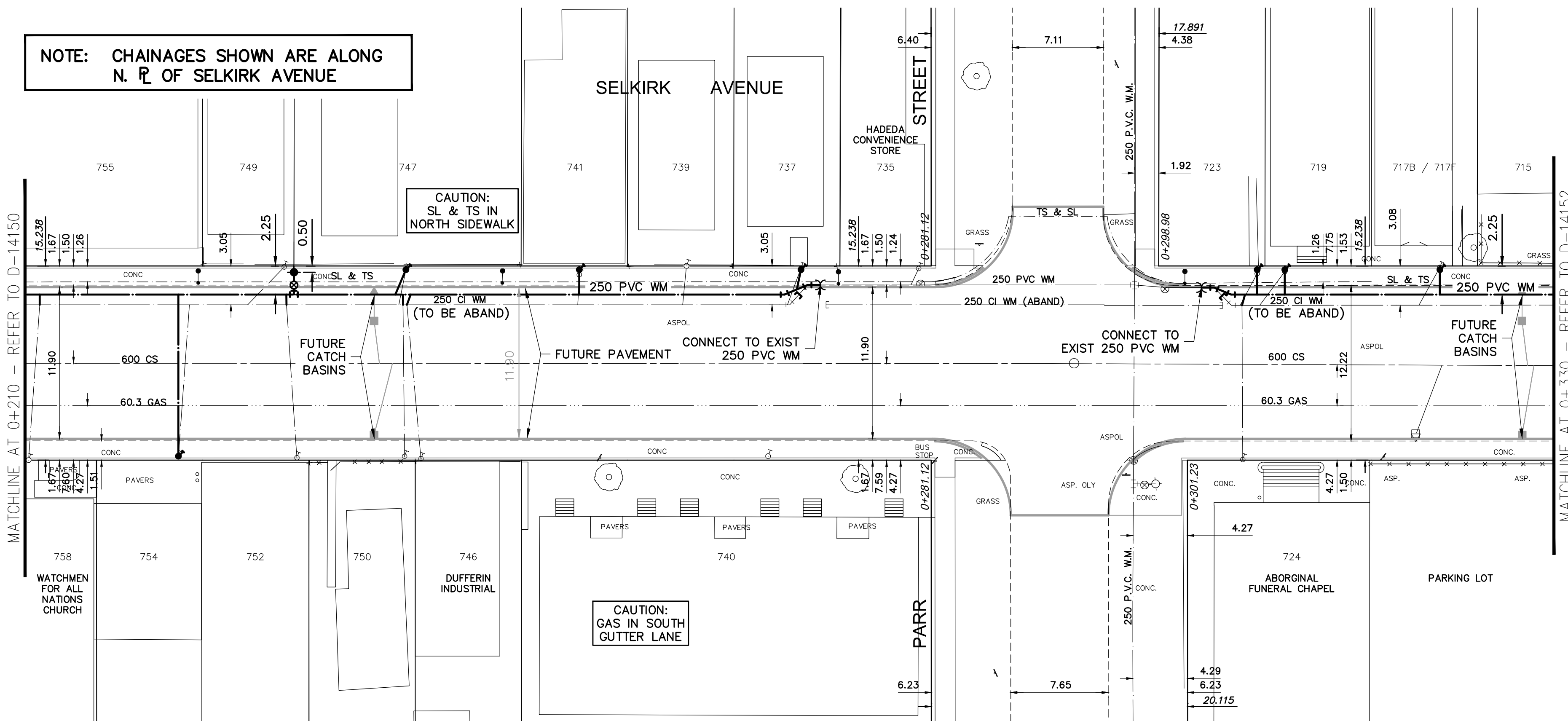


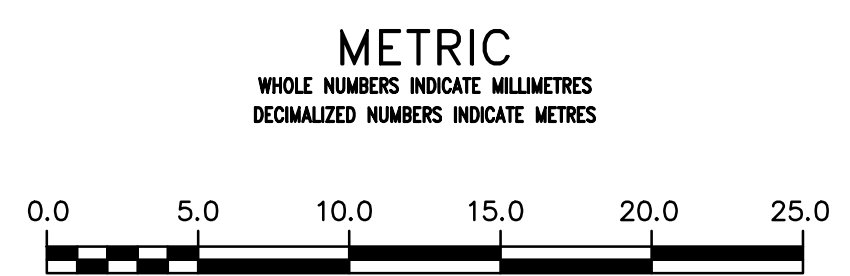
NOTE: CHAINAGES SHOWN ARE ALONG N. P. OF SELKIRK AVENUE



ADDRESS	SIZE (mm) MATERIAL (STREET)	SIZE (mm) MATERIAL (PROP)	SHORT & LONG MEASUREMENT	CORPORATION LOCATION	REMARKS
758 SELKIRK AV	25 CU	25 CU	9.4 E LST HYD EEL ARLINGTON	1.2 E OF S/C	
754 SELKIRK AV	12 LEAD	12 CU	58.8 WWL OF PARR	0.6 E OF S/C	RENEW TO PROPERTY
752 SELKIRK AV	20 CU	20 LEAD	50.3 WWL OF PARR	0.3 W OF CS	
750 SELKIRK AV	20 CU	20 LEAD	41.8 WWL OF PARR	0.3 E OF S/C	
749 SELKIRK AV	20 CU	20 LEAD	52.7 WWL OF PARR	0.9 W OF S/C	
747 SELKIRK AV	20 LEAD	20 CU	41.5 WWL OF PARR	OPP S/C	RENEW TO PROPERTY
746 SELKIRK AV	20 CU	20 LEAD	40.8 WWL OF PARR	0.3 W OF S/C	
741 SELKIRK AV	12 LEAD	12 CU	27.7 WWL OF PARR	OPP S/C	RENEW TO PROPERTY
740 SELKIRK AV	38 CU	38 LEAD	12.8 WWL OF PARR		
739 SELKIRK AV	20 CU	20 CU	19.2 WWL OF PARR	0.3 W OF S/C	
737 SELKIRK AV	12 LEAD	12 CU	10.4 WWL OF PARR	0.9 W OF S/C	RENEW TO PROPERTY
735 SELKIRK AV	20 CU	20 LEAD	1.1 WWL OF PARR	0.5 W OF S/C	
724 SELKIRK AV	20 CU	20 CU	4.3 EEL OF PARR	OPP S/C	
723 SELKIRK AV	12 LEAD	12 CU	5.8 EEL OF PARR	0.6 E S/C	RENEW TO PROPERTY
719 SELKIRK AV	12 LEAD	20 CU	8.5 EEL OF PARR	0.6 W S/C	RENEW TO PROPERTY
717 SELKIRK AV	12 LEAD	12 LEAD	20.4 EEL OF PARR	OPP S/C	RENEW TO PROPERTY

NOTE: REPLACE ALL EXISTING LEAD SERVICES FROM THE PROPOSED WATER MAIN TO PROPERTY LINE.
 RECONNECT ALL OTHER SERVICES UNLESS NOTED.
 LOCATION OF WATER SERVICES SHOWN ON DRAWINGS ARE APPROXIMATE.
 THE CONTRACTOR SHALL FIELD LOCATE ALL WATER SERVICES PRIOR TO CONSTRUCTION.

ALL VALVES TO BE COUNTER-CLOCKWISE TO CLOSE (RED OPERATING NUT)



WARNING
 IF POWER EQUIPMENT OR EXPLOSIVES ARE TO BE USED FOR EXCAVATION ON THIS PROJECT THE CONTRACTOR MUST:
 1) NOTIFY THE GAS COMPANY OF THE PROPOSED LOCATION OF EXCAVATION.
 2) TAKE PRECAUTION TO AVOID DAMAGE TO GAS COMPANY INSTALLATIONS.
 SEE PROVINCIAL REGULATION 210/72 FOR DETAILS

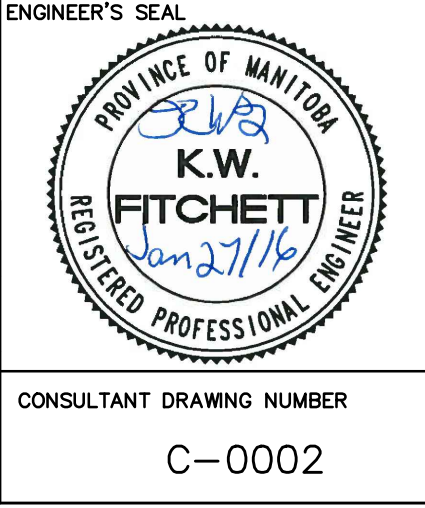
LOCATION APPROVED UNDERGROUND STRUCTURES
 SUPV. U/G STRUCTURES COMMITTEE DATE
 NOTE: LOCATION OF UNDERGROUND STRUCTURES AS SHOWN ARE BASED ON THE BEST INFORMATION AVAILABLE BUT NO GUARANTEE IS GIVEN THAT ALL EXISTING UTILITIES ARE SHOWN OR THAT THE GIVEN LOCATIONS ARE EXACT. CONFIRMATION OF EXISTENCE AND EXACT LOCATION OF ALL SERVICES MUST BE OBTAINED FROM THE INDIVIDUAL UTILITIES BEFORE PROCEEDING WITH CONSTRUCTION.

B.M. 26-020 ELEV. 232.072m
 N.W. Cor. Selkirk Ave. and Powers St., Brass Plug in Conc. Pile, 2.4m E. of W. Selkirk Ave. and 0.3m N. of N.E. of Selkirk Ave.
 CONSTRUCTION COMPLETION DATE:

NO.	REVISIONS	DATE	BY
0	ISSUED FOR TENDER	16/01/27	GSK
A	ISSUED FOR REVIEW	16/01/14	GSK

AECOM

DESIGNED BY: HC
 CHECKED BY: GSK
 DRAWN BY: JP
 APPROVED BY: AN
 SCALE: HORIZONTAL 1:250 VERTICAL 1:50
 PLOT DATE: 2016 01 27



THE CITY OF WINNIPEG
 WATER AND WASTE DEPARTMENT
 ENGINEERING DIVISION

SELKIRK AVENUE
 ARLINGTON STREET TO SALTER STREET
 PAVEMENT RECONSTRUCTION

2016 WATER MAIN RENEWAL CONTRACT A-2 ARLINGTON ST TO MCGREGOR ST
 71.1m WEST OF PARR ST. TO 31.0m EAST OF PARR ST.

SHEET 3 OF 6
 CITY DRAWING NUMBER D-14151