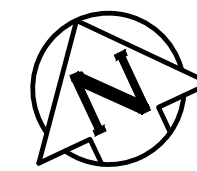
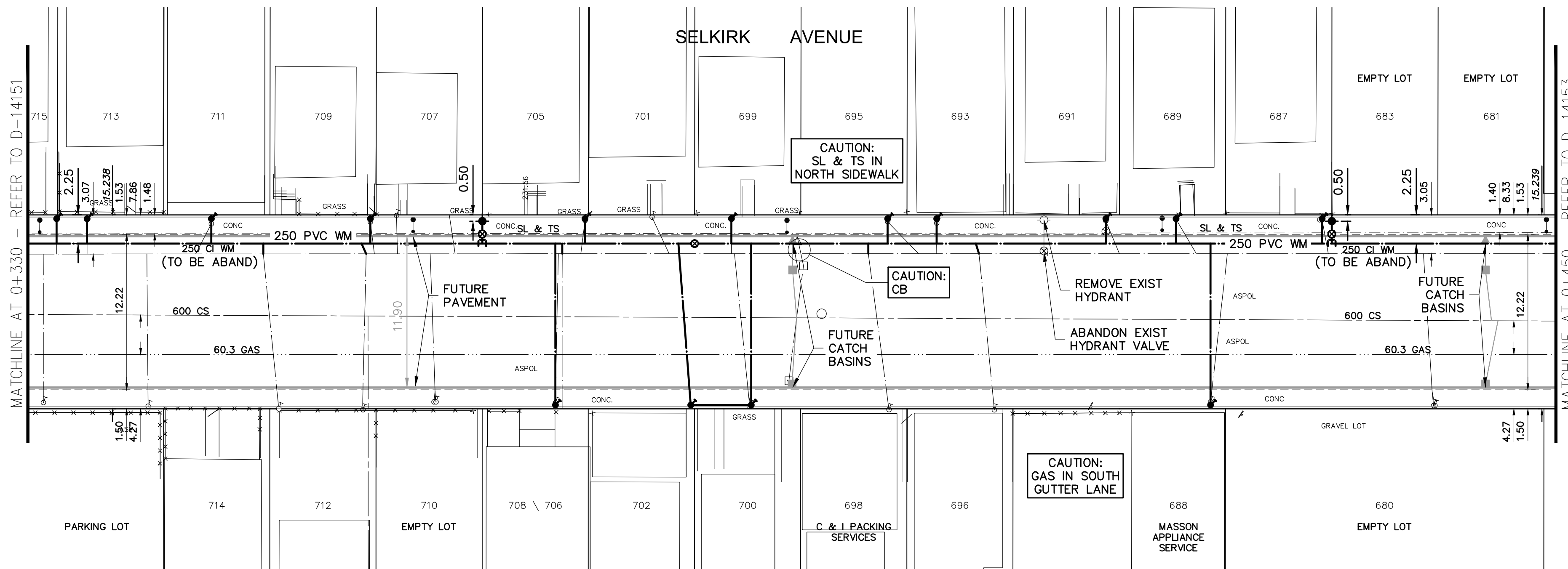


NOTE: CHAINAGES SHOWN ARE ALONG N. P. OF SELKIRK AVENUE

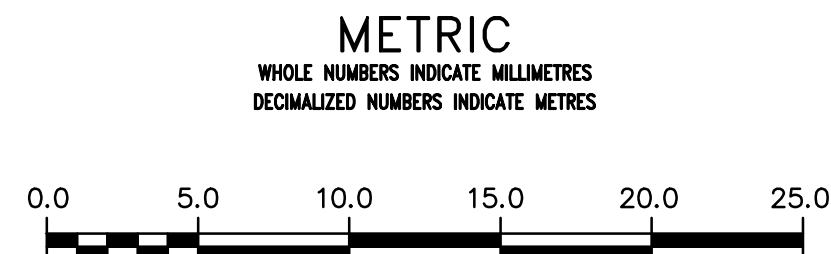


ADDRESS	SIZE (mm) MATERIAL (STREET)	SIZE (mm) MATERIAL (PROP.)	SHORT & LONG MEASUREMENT	CORPORATION LOCATION	REMARKS
715 SELKIRK AV	12 LEAD	12 LEAD	6.4 WE LL OF #713	OPP S/C	RENEW TO PROPERTY
714 SELKIRK AV	38 CU	38 CU	48.5 EEL OF PARR 1.2 WEL BLDG	1.2 W OF S/C	
713 SELKIRK AV	12 LEAD	12 LEAD	2.2 WW BLDG	OPP S/C	RENEW TO PROPERTY
712 SELKIRK AV	20 CU	20 CU	55.3 EEL OF PARR	OPP S/C	REVERSE TAP
711 SELKIRK AV	12 LEAD	12 LEAD	45.7 EEL OF PARR 3.4 EWL OF HOUSE	1.5 W OF S/C	RENEW TO PROPERTY
709 SELKIRK AV	16 LEAD	16 LEAD	56.1 EEL OF PARR CENTRE BET. HOUSES	4.6 E OF S/C	RENEW TO PROPERTY
708 SELKIRK AV	20 CU	20 CU	70.7 EEL OF PARR 2.1 WEL OF HOUSE	OPP S/C	
707 SELKIRK AV	20 CU	20 CU	60.4 EEL PARR	0.3 W OF S/C	
706 SELKIRK AV	16 LEAD	16 LEAD	70.7 EEL OF PARR	OPP S/C	
705 SELKIRK AV	12 LEAD	12 LEAD	36.0 W 1ST HYD W MCKENZIE	0.5 E OF S/C	RENEW TO PROPERTY
702 SELKIRK AV	12 LEAD	12 LEAD	96.0 WWL MCKENZIE ST	0.9 W CS	BRANCH WITH 700
701 SELKIRK AV	20 CU	20 CU	80.2 EEL OF PARR	1.2 E OF S/C	
700 SELKIRK AV	12 LEAD	12 LEAD	96.0 WWL MCKENZIE ST	0.9 W CS	BRANCH WITH 702
699 SELKIRK AV	12 LEAD	12 LEAD	88.3 EEL OF PARR	OPP S/C	RENEW TO PROPERTY
698 SELKIRK AV	20 CU	20 CU	85.3 WWL MCKENZIE	1.1 W OF S/C	REVERSE TAP
696 SELKIRK AV	20 CU	20 CU	77.1 WWL MCKENZIE ST	0.6 W OF S/C	
695 SELKIRK AV	12 LEAD	12 LEAD	0.7 WEL OF HOUSE	0.9 E OF S/C	RENEW TO PROPERTY
693 SELKIRK AV	12 LEAD	12 LEAD	81.1 WWL OF MCKENZIE	OPP S/C	RENEW TO PROPERTY
691 SELKIRK AV	20 CU	20 CU	1.1 WPEL	1.1 E CS	PREVIOUSLY FROZEN
689 SELKIRK AV	12 LEAD	12 LEAD	62.2 WWL OF MCKENZIE	1.5 E OF S/C	RENEW TO PROPERTY
688 SELKIRK AV	12 LEAD	12 LEAD	WWL OF MCKENZIE		RENEW TO PROPERTY
687 SELKIRK AV	12 LEAD	12 LEAD	50.3 WWL OF MCKENZIE		RENEW TO PROPERTY
687 SELKIRK AV	12 LEAD	12 LEAD	1.2 WEL OF HOUSE	OPP S/C	RENEW TO PROPERTY
687 SELKIRK AV	12 LEAD	12 LEAD	1.2 EEL OF HOUSE	OPP S/C	RENEW TO PROPERTY



NOTE: REPLACE ALL EXISTING LEAD SERVICES FROM THE PROPOSED WATER MAIN TO PROPERTY LINE.
 RECONNECT ALL OTHER SERVICES UNLESS NOTED.
 LOCATION OF WATER SERVICES SHOWN ON DRAWINGS ARE APPROXIMATE.
 THE CONTRACTOR SHALL FIELD LOCATE ALL WATER SERVICES PRIOR TO CONSTRUCTION.

ALL VALVES TO BE COUNTER-CLOCKWISE TO CLOSE (RED OPERATING NUT)



APECM
 Certificate of Authorization
 AECOM Canada Ltd.
 No. 4671 Date: 16/01/27

WARNING
 IF POWER EQUIPMENT OR EXPLOSIVES ARE TO BE USED FOR EXCAVATION ON THIS PROJECT THE CONTRACTOR MUST:
 1) NOTIFY THE GAS COMPANY OF THE PROPOSED LOCATION OF EXCAVATION.
 2) TAKE PRECAUTION TO AVOID DAMAGE TO GAS COMPANY INSTALLATIONS.
 SEE PROVINCIAL REGULATION 210/72 FOR DETAILS

LOCATION APPROVED UNDERGROUND STRUCTURES
 SUPV. U/G STRUCTURES COMMITTEE DATE
 NOTE:
 LOCATION OF UNDERGROUND STRUCTURES AS SHOWN ARE BASED ON THE BEST INFORMATION AVAILABLE BUT NO GUARANTEE IS GIVEN THAT ALL EXISTING UTILITIES ARE SHOWN OR THAT THE GIVEN LOCATIONS ARE EXACT. CONFIRMATION OF EXISTENCE AND EXACT LOCATION OF ALL SERVICES MUST BE OBTAINED FROM THE INDIVIDUAL UTILITIES BEFORE PROCEEDING WITH CONSTRUCTION.

B.M. 26-020
 ELEV. 232.072m
 N.W. Cor. Selkirk Ave. and Powers St., Brass Plug in Conc. Pile, 2.4m E. of W. Selkirk Ave. and 0.3m N. of N.E. of Selkirk Ave.

NO.	REVISIONS	DATE	BY
0	ISSUED FOR TENDER	16/01/27	GSK
A	ISSUED FOR REVIEW	16/01/14	GSK

AECOM

DESIGNED BY: HC
 CHECKED BY: GSK
 DRAWN BY: JP
 APPROVED BY: AN
 SCALE: HORIZONTAL 1:250, VERTICAL 1:50
 PLOT DATE: 2016 01 27

ENGINEER'S SEAL

 CONSULTANT DRAWING NUMBER: C-0003

THE CITY OF WINNIPEG
 WATER AND WASTE DEPARTMENT
 ENGINEERING DIVISION

SELKIRK AVENUE
 ARLINGTON STREET TO SALTER STREET
 PAVEMENT RECONSTRUCTION

2015 WATER MAIN RENEWAL CONTRACT A-1 Mcgregor St to Salter St
 31.0m EAST OF PARR ST. TO 32.4m WEST OF MCKENZIE ST.

SHEET 4 OF 6
 CITY DRAWING NUMBER: D-14152