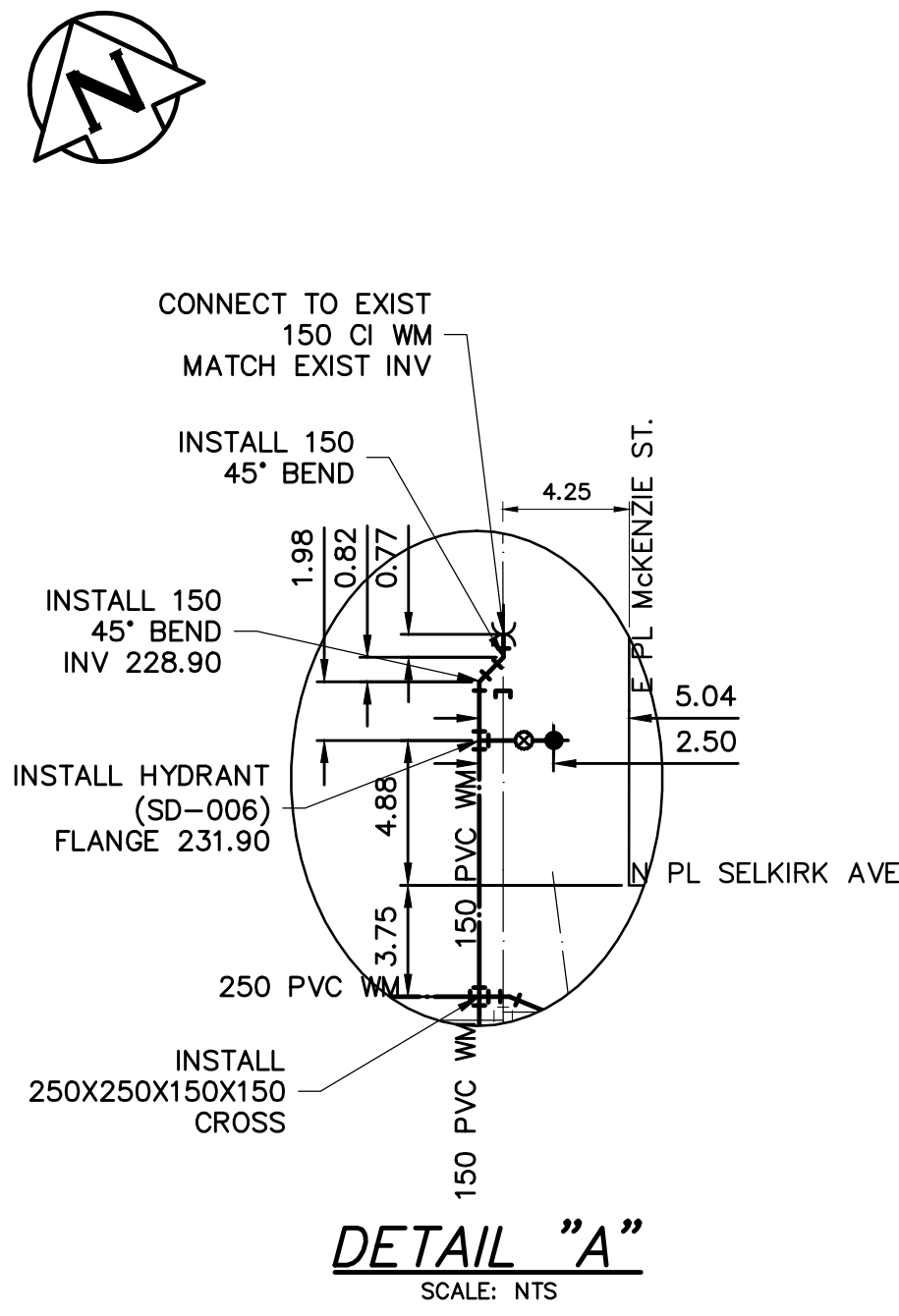
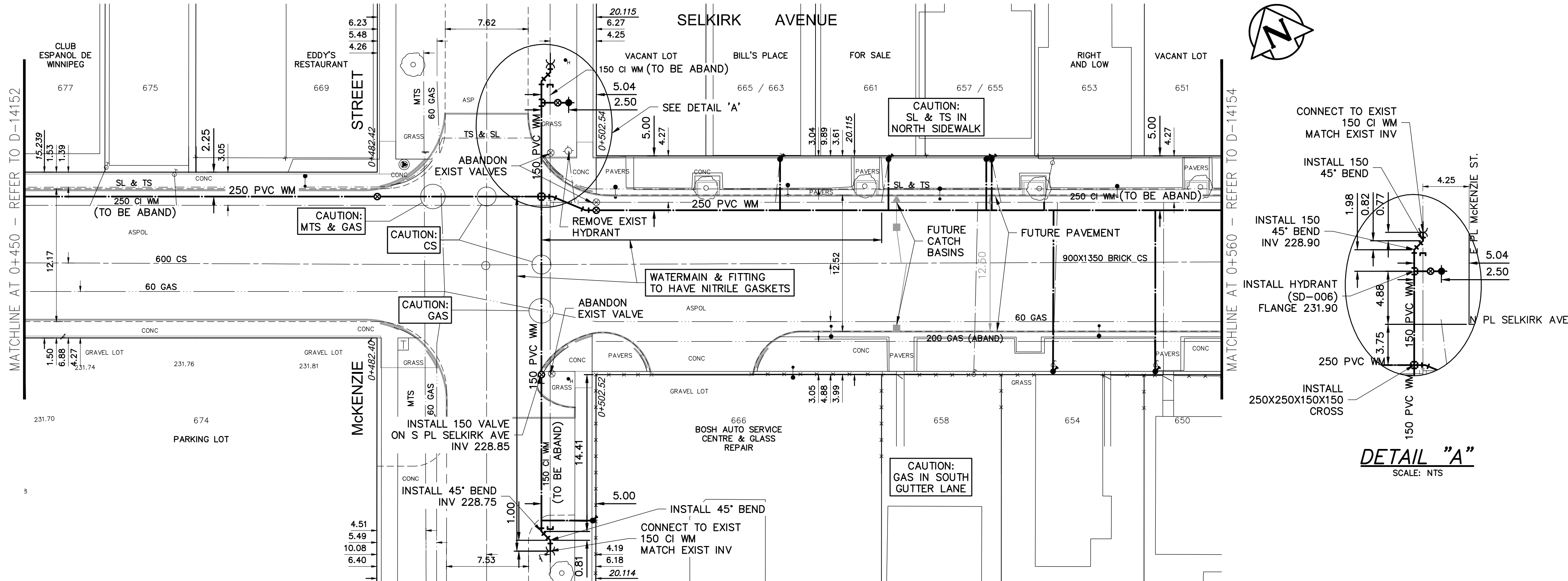


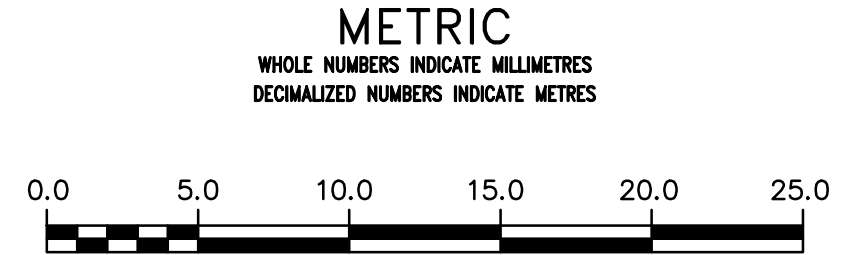
NOTE: CHAINAGES SHOWN ARE ALONG N. P. OF SELKIRK AVENUE



ADDRESS	SIZE (mm) MATERIAL (STREET)	SIZE (mm) MATERIAL (PROP.)	SHORT & LONG MEASUREMENT	CORPORATION LOCATION	REMARKS
677 SELKIRK AV	20 CU	20	26.8 WWL MCKENZIE	0.5 E OF S/C	REVERSE TAP
675 SELKIRK AV	20 CU	20	18.7 WWL OF MCKENZIE	0.3 E OF S/C	
669 SELKIRK AV	20 CU	12	23.2>NNL OF SELKIRK	OPP S/C	SERVICED OFF MCKENZIE
666 SELKIRK AV	20 CU	20	0.9>NNL OF STORE	OPP S/C	SERVICED OFF MCKENZIE PREVIOUSLY FROZEN, RENEW TO PROPERTY
665 SELKIRK AV	20 CU	12	7.6 EEL OF MCKENZIE	0.3 E OF S/C	
661 SELKIRK AV	12 LEAD	12	26.8 EEL OF MCKENZIE	0.6 W OF S/	RENEW TO PROPERTY
658 SELKIRK AV	20 CU	20	13.4 S OF SELKIRK	OPP S/C	
657 SELKIRK AV	16 LEAD	12	36.6 EEL MCKENZIE ST	0.6 E CS	BRANCH WITH 655 RENEW TO PROPERTY
655 SELKIRK AV	20 LEAD	16	36.6 EEL MCKENZIE ST	0.6 E CS	BRANCH WITH 657 RENEW TO PROPERTY
654 SELKIRK AV	12 LEAD	12	42.4 EEL OF MCKENZIE	OPP S/C	RENEW TO PROPERTY
653 SELKIRK AV	20 CU	12	42.1 EEL OF MCKENZIE	0.9 W OF S/C	
650 SELKIRK AV	12 LEAD	12	52.1 EEL OF MCKENZIE	OPP S/C	RENEW TO PROPERTY

NOTE: REPLACE ALL EXISTING LEAD SERVICES FROM THE PROPOSED WATER MAIN TO PROPERTY LINE.
 RECONNECT ALL OTHER SERVICES UNLESS NOTED.
 LOCATION OF WATER SERVICES SHOWN ON DRAWINGS ARE APPROXIMATE.
 THE CONTRACTOR SHALL FIELD LOCATE ALL WATER SERVICES PRIOR TO CONSTRUCTION.

ALL VALVES TO BE COUNTER-CLOCKWISE TO CLOSE (RED OPERATING NUT)



WARNING
 IF POWER EQUIPMENT OR EXPLOSIVES ARE TO BE USED FOR EXCAVATION ON THIS PROJECT THE CONTRACTOR MUST:
 1) NOTIFY THE GAS COMPANY OF THE PROPOSED LOCATION OF EXCAVATION.
 2) TAKE PRECAUTION TO AVOID DAMAGE TO GAS COMPANY INSTALLATIONS.
 SEE PROVINCIAL REGULATION 210/72 FOR DETAILS

LOCATION APPROVED UNDERGROUND STRUCTURES
 SUPV. U/G STRUCTURES COMMITTEE DATE
 NOTE: LOCATION OF UNDERGROUND STRUCTURES AS SHOWN ARE BASED ON THE BEST INFORMATION AVAILABLE BUT NO GUARANTEE IS GIVEN THAT ALL EXISTING UTILITIES ARE SHOWN OR THAT THE GIVEN LOCATIONS ARE EXACT. CONFIRMATION OF EXISTENCE AND EXACT LOCATION OF ALL SERVICES MUST BE OBTAINED FROM THE INDIVIDUAL UTILITIES BEFORE PROCEEDING WITH CONSTRUCTION.

B.M. 26-020
 ELEV. 232.072m
 N.W. Cor. Selkirk Ave. and Powers St., Brass Plug in Conc. Pkg. 2.4m E. of W. Selkirk Ave. and 0.3m N. of N.E. of Selkirk Ave.

NO.	REVISIONS	DATE	BY
0	ISSUED FOR TENDER	16/01/27	GSK
A	ISSUED FOR REVIEW	16/01/14	GSK

AECOM

DESIGNED BY	HC	CHECKED BY	GSK
DRAWN BY	JP	APPROVED BY	AN
SCALE: HORIZONTAL	1:250	RELEASED FOR CONSTRUCTION	
SCALE: VERTICAL	1:50		
DATE		DATE	

PLOT DATE: 2016 01 27



THE CITY OF WINNIPEG
 WATER AND WASTE DEPARTMENT
 ENGINEERING DIVISION

SELKIRK AVENUE
 ARLINGTON STREET TO SALTER STREET
 PAVEMENT RECONSTRUCTION

2015 WATER MAIN RENEWAL CONTRACT A-1 MCGREGOR ST TO SALTER ST
 SELKIRK AVENUE
 32.4m WEST OF MCKENZIE ST. TO 57.5m EAST OF MCKENZIE ST.

SHEET 5 OF 6
 CITY DRAWING NUMBER
 D-14153

CONSULTANT DRAWING NUMBER
 C-0004

BID OPPORTUNITY: 31-2016
 CONTRACT NUMBER: A-2

FILE PATH: P:\60430638\900-Work\910-CAD\20-SHEETS\C\WM\2016 WM Renewals
 FILE NAME: 60430638-SIT-01-C-1001_C-1005