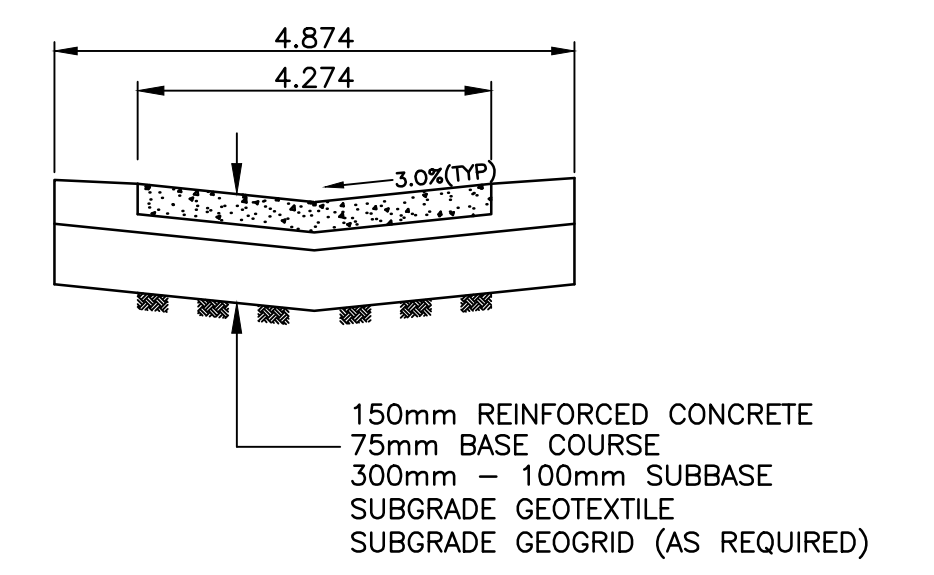
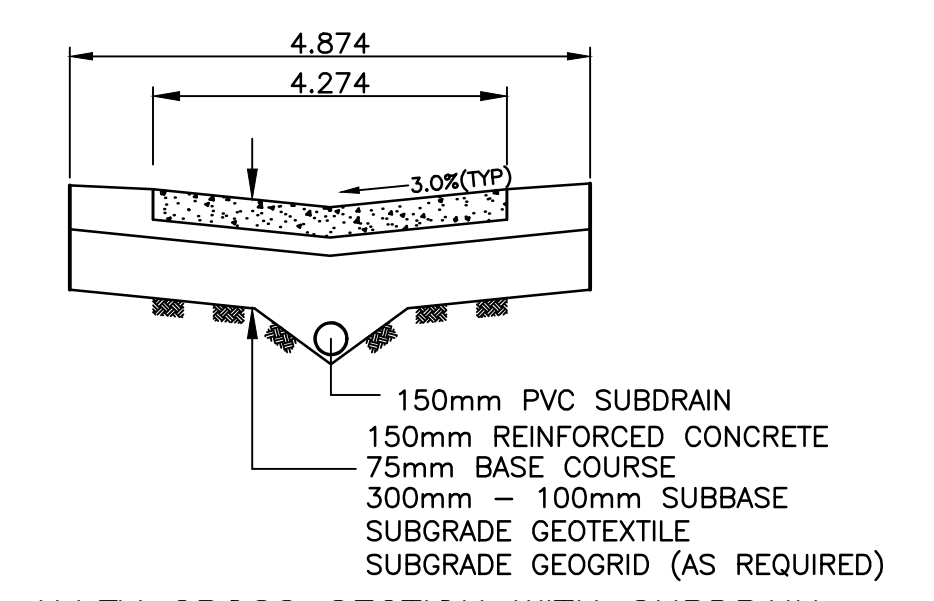


NOTES:

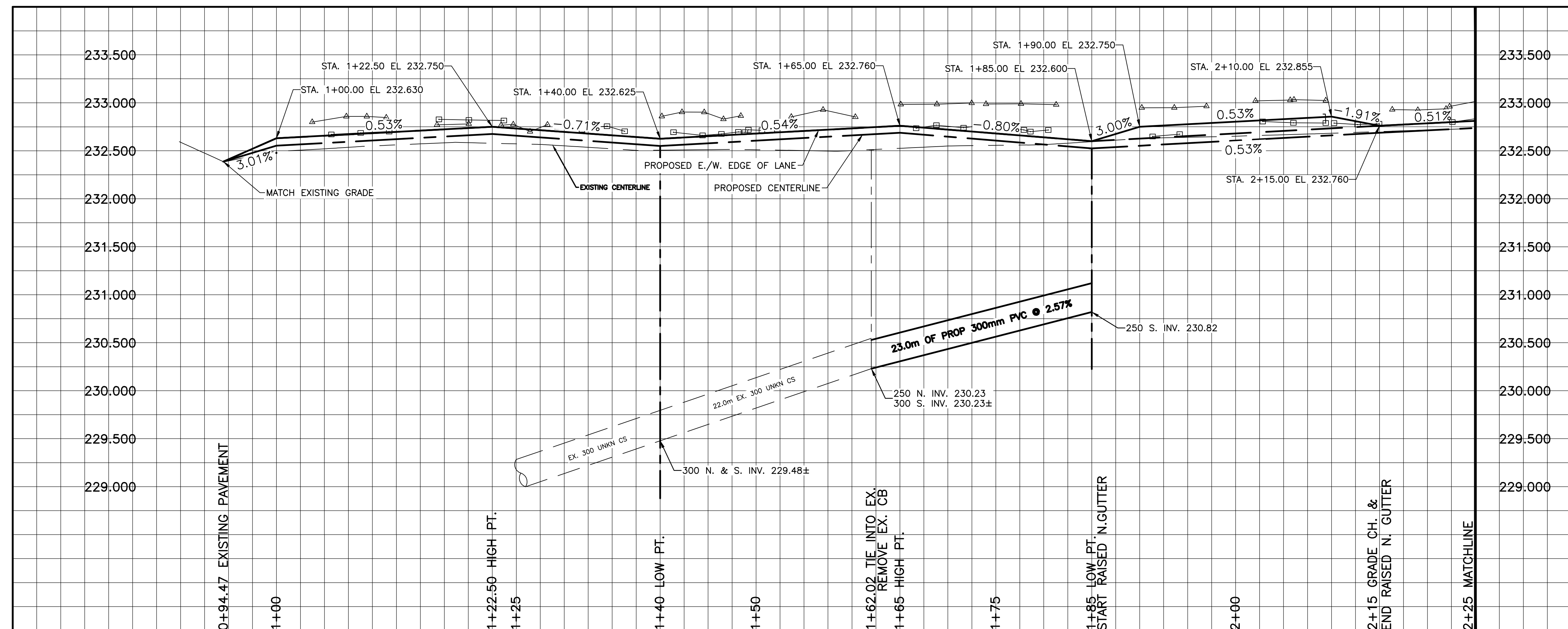
- ISOLATE EXISTING HYDRO POLES AS DIRECTED BY CONTRACT ADMINISTRATOR
- RENEW EXISTING APPROACHES AS DIRECTED BY CONTRACT ADMINISTRATOR
- ADDITIONAL EXCAVATION AND INSTALLATION OF SUBGRADE GEOGRID TO BE DETERMINED BY CONTRACT ADMINISTRATOR
- ADJUSTMENTS TO PROPOSED CROSSFALL, WHERE REQUIRED, ARE TO BE DETERMINED BY CONTRACT ADMINISTRATOR TO SUIT EXISTING DRIVEWAYS, APPROACHES, ETC.
- MODIFIED BARRIER CURB TO BE USED FOR CURB RENEWAL AT RADII AS DIRECTED BY CONTRACT ADMINISTRATOR
- EX. MANHOLES, CATCHBASINS, GATE VALVES AND OTHER APPURTENANCES TO BE ADJUSTED AS DIRECTED BY CONTRACT ADMINISTRATOR



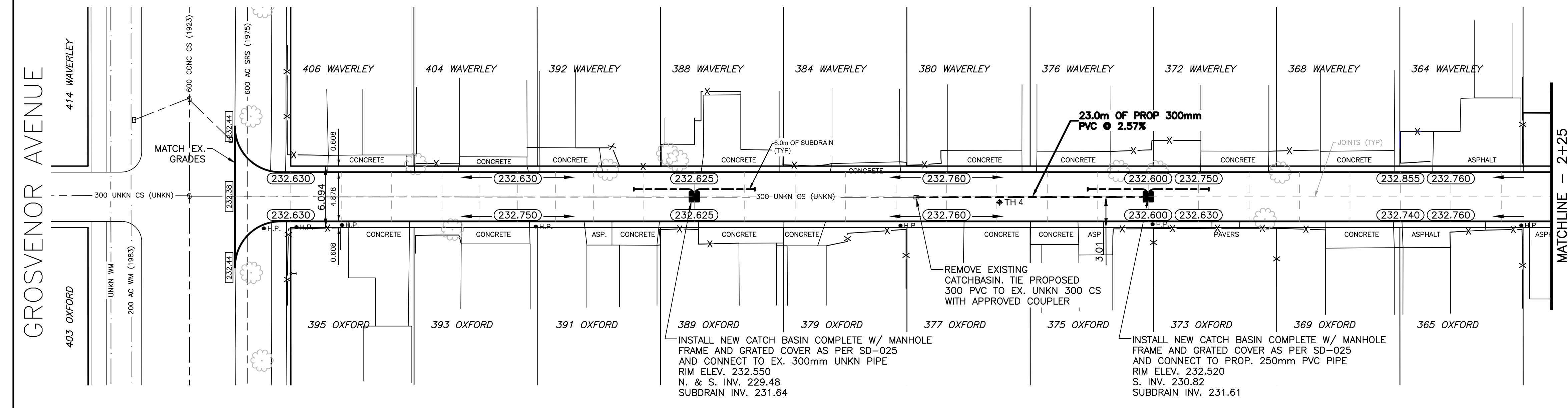
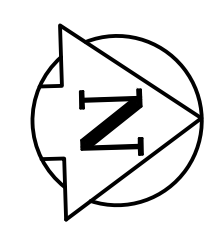
TYPICAL ALLEY CROSS SECTION N.T.S.



TYPICAL ALLEY CROSS SECTION WITH SUBDRAIN N.T.S.



CHAINAGE ALONG C OF PUBLIC RIGHT-OF-WAY
WAVERLEY STREET / OXFORD STREET



"Description of property limits, and existing and/or proposed features relative to these limits as shown on this drawing do not represent a Legal Survey. WSP makes no representation or guarantee that the property limit information is accurate. WSP accepts no responsibility for damages, if any, suffered by any third party as a result of decisions made or actions based on this drawing."



	WATERMAIN HYDRANT		M.T.S. TRAFFIC SIGNAL		WATERMAIN VALVE
	WATERMAIN VALVE		CONCRETE/ASPHALT		LAND DRAINAGE SEWER
	CURB STOP		SIDEWALK		WASTE WATER SEWER
	WASTE WATER SEWER		CURB RAMP		CENTERLINE
	LAND DRAINAGE SEWER		PROPERTY LINE		SOUTH & EAST GUTTER
	C.B. LEAD		ELEVATIONS		NORTH & WEST GUTTER
	MANHOLE		TEST HOLE LOCATION		S. & E. PAD/GARG.
	CATCH BASIN		GAS		N. & W. PAD/GARG.
	GAS		HYDRO		
	HYDRO				

LOCATION APPROVED UNDERGROUND STRUCTURES		B.M. ELEV.	
SUPV. U/G STRUCTURES	DATE		
COMMITTEE			
NOTE: LOCATION OF UNDERGROUND STRUCTURES AS SHOWN ARE BASED ON THE BEST INFORMATION AVAILABLE BUT NO GUARANTEE IS GIVEN THAT ALL EXISTING UTILITIES ARE SHOWN OR THAT THE GIVEN LOCATIONS ARE EXACT. CONFIRMATION OF EXISTENCE AND EXACT LOCATION OF ALL SERVICES MUST BE OBTAINED FROM THE INDIVIDUAL UTILITIES BEFORE PROCEEDING WITH CONSTRUCTION.			
NO.	REVISIONS	DATE	BY
2	ISSUED FOR TENDER	04/06/16	A.B.
1	FOR REVIEW AND APPROVAL	03/03/16	A.B.

WSP 1600 BUFFALO PLACE WINNIPEG, MB, R3T 6B8 PHONE: 204-477-6650 FAX: 204-474-2864 WWW.WSPGROUP.COM

DESIGNED BY: A.B. CHECKED BY: S.M.
DRAWN BY: A.B. APPROVED BY: I.McK.
HOR. SCALE: 1:250
VERT. SCALE: 1:25
RELEASED FOR CONSTRUCTION
DATE: JANUARY 2016

THE CITY OF WINNIPEG PUBLIC WORKS DEPARTMENT

2016 ALLEY RECONSTRUCTION - CONTRACT 1
WAVERLEY STREET/OXFORD STREET ALLEY
FROM GROSVENOR AVENUE TO STA. 2+25
CONCRETE PAVEMENT

CITY DRAWING NO. SHEET 1 OF 3
316-2016

CONSULTANT DRAWING NO. 151-13889-00-13