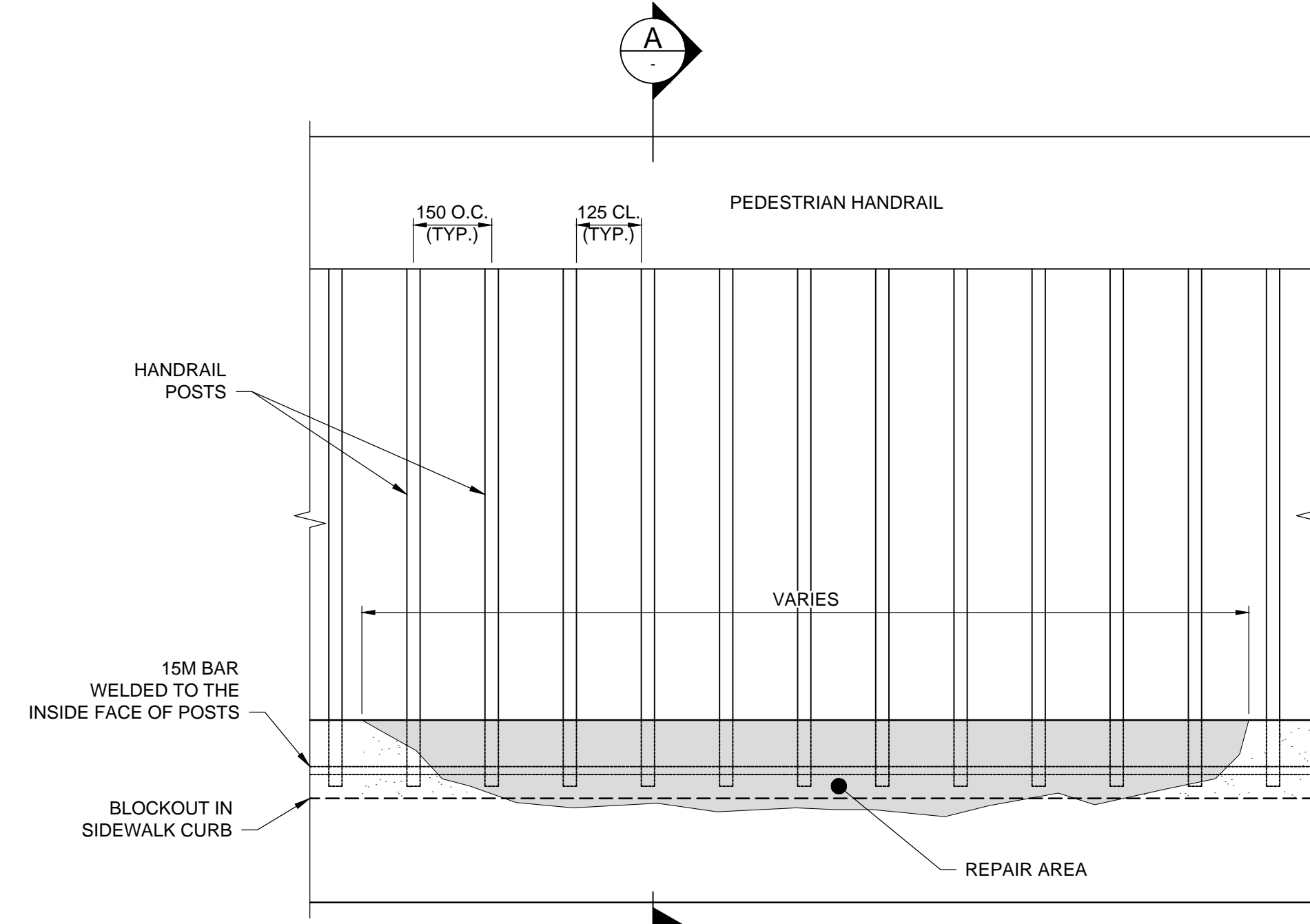
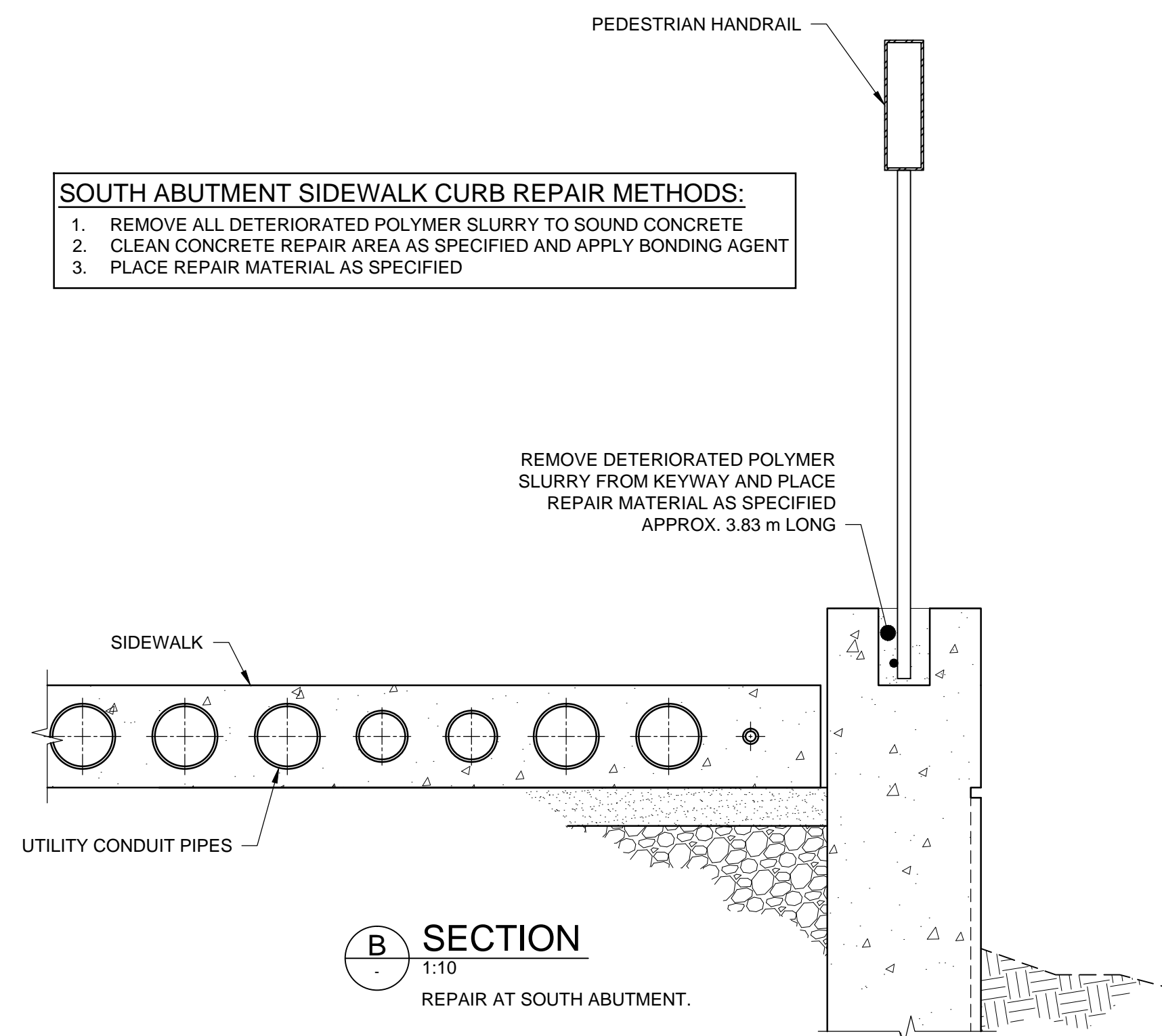


**NORTH ABUTMENT SIDEWALK CURB REPAIR**  
1:20

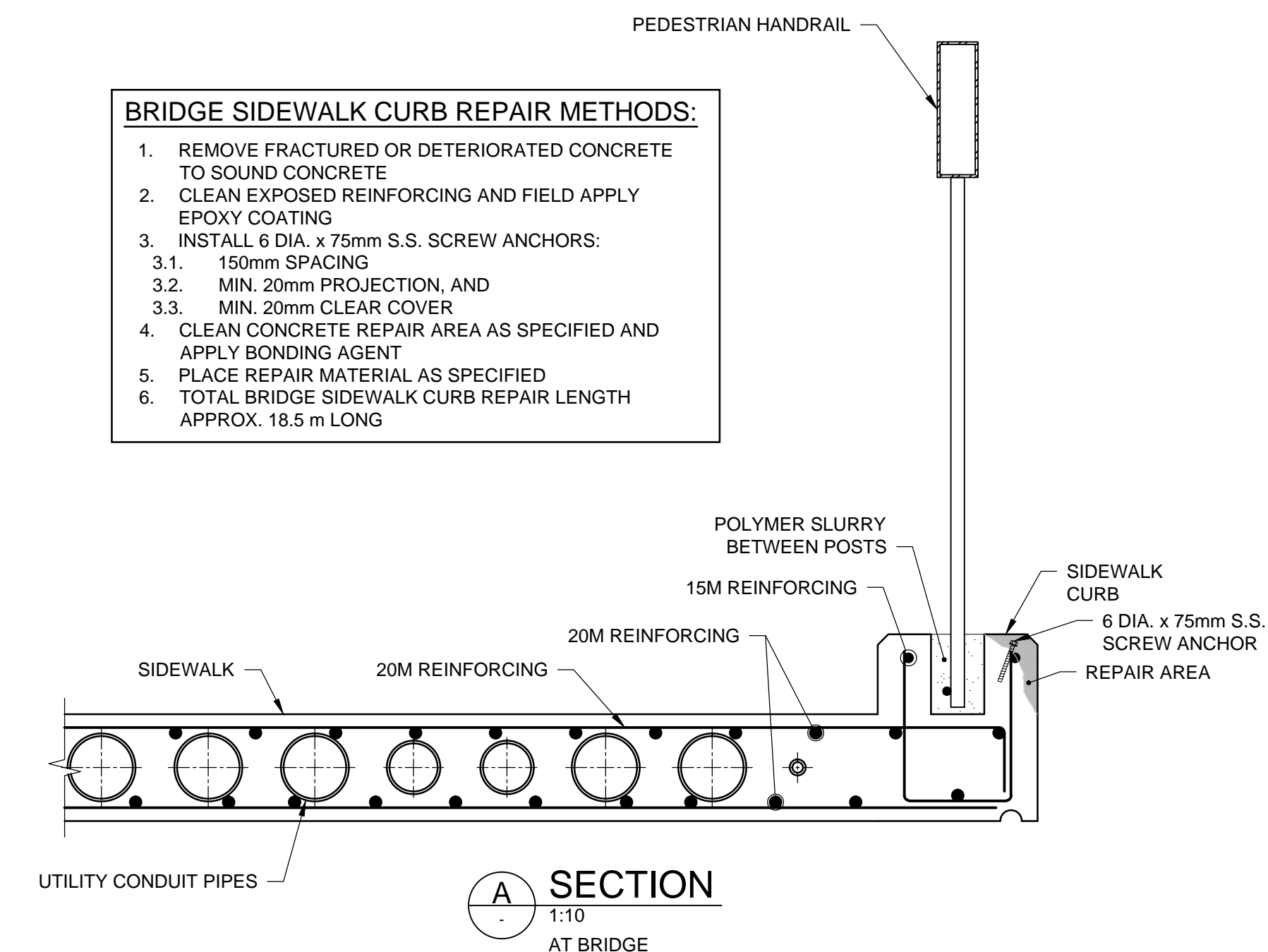
- NORTH ABUTMENT SIDEWALK CURB REPAIR METHODS:**
1. SAWCUT MIN. 20mm AROUND PERIMETER OF REPAIR AREA
  2. REMOVE FRACTURED OR DETERIORATED CONCRETE TO:
    - 2.1. SOUND CONCRETE;
    - 2.2. MIN. 30mm DEPTH, AND IF REMOVALS EXCEED HALF DEPTH OF REINFORCING BARS, THEN CONTINUE MIN. 20mm PAST REINFORCING BARS
  3. REMOVE CORROSION FROM EXPOSED EXPANSION JOINT COMPONENTS AND REINFORCING, FIELD APPLY GALVANIZING
  4. CLEAN EXPOSED REINFORCING AND FIELD APPLY EPOXY COATING
  3. INSTALL 6 DIA. x 75mm S.S. SCREW ANCHORS:
    - 3.1. 150mm SPACING
    - 3.2. MIN. 20mm PROJECTION, AND
    - 3.3. MIN. 20mm CLEAR COVER
  4. CLEAN CONCRETE REPAIR AREA AS SPECIFIED AND APPLY BONDING AGENT
  5. PLACE REPAIR MATERIAL AS SPECIFIED



**SIDEWALK CURB ELEVATION**  
1:10



- SOUTH ABUTMENT SIDEWALK CURB REPAIR METHODS:**
1. REMOVE ALL DETERIORATED POLYMER SLURRY TO SOUND CONCRETE
  2. CLEAN CONCRETE REPAIR AREA AS SPECIFIED AND APPLY BONDING AGENT
  3. PLACE REPAIR MATERIAL AS SPECIFIED



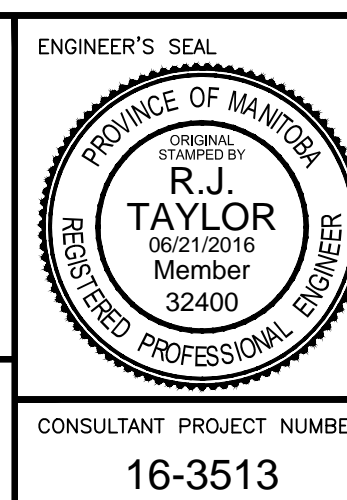
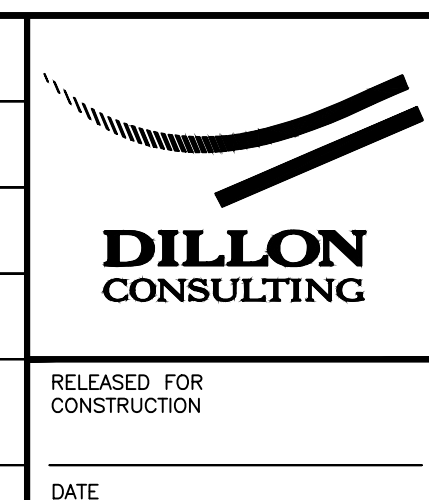
- BRIDGE SIDEWALK CURB REPAIR METHODS:**
1. REMOVE FRACTURED OR DETERIORATED CONCRETE TO SOUND CONCRETE
  2. CLEAN EXPOSED REINFORCING AND FIELD APPLY EPOXY COATING
  3. INSTALL 6 DIA. x 75mm S.S. SCREW ANCHORS:
    - 3.1. 150mm SPACING
    - 3.2. MIN. 20mm PROJECTION, AND
    - 3.3. MIN. 20mm CLEAR COVER
  4. CLEAN CONCRETE REPAIR AREA AS SPECIFIED AND APPLY BONDING AGENT
  5. PLACE REPAIR MATERIAL AS SPECIFIED
  6. TOTAL BRIDGE SIDEWALK CURB REPAIR LENGTH APPROX. 18.5 m LONG

METRIC

WHOLE NUMBERS INDICATE MILLIMETRES  
DECIMALIZED NUMBERS INDICATE METRES



B.M. ELEV.	DESIGNED BY	DRA
	DRAWN BY	KB
	CHECKED BY	RJT
	APPROVED BY	SSR
	HOR. SCALE	—
	VERTICAL	—
0 ISSUED FOR TENDER	6/21/16	RJT
NO. REVISIONS	DATE	BY
	DATE	JUNE 21, 2016



**THE CITY OF WINNIPEG**  
PUBLIC WORKS DEPARTMENT

2016 BRIDGE MAINTENANCE - ST. JAMES  
SOUTHBOUND BRIDGE REPAIRS

ST. JAMES SB SIDEWALK CURB REPAIR DETAILS

CITY DRAWING NUMBER  
B101-16-02

SHEET 02 OF 11

CONSULTANT DRAWING NUMBER  
—

CONSULTANT PROJECT NUMBER  
16-3513