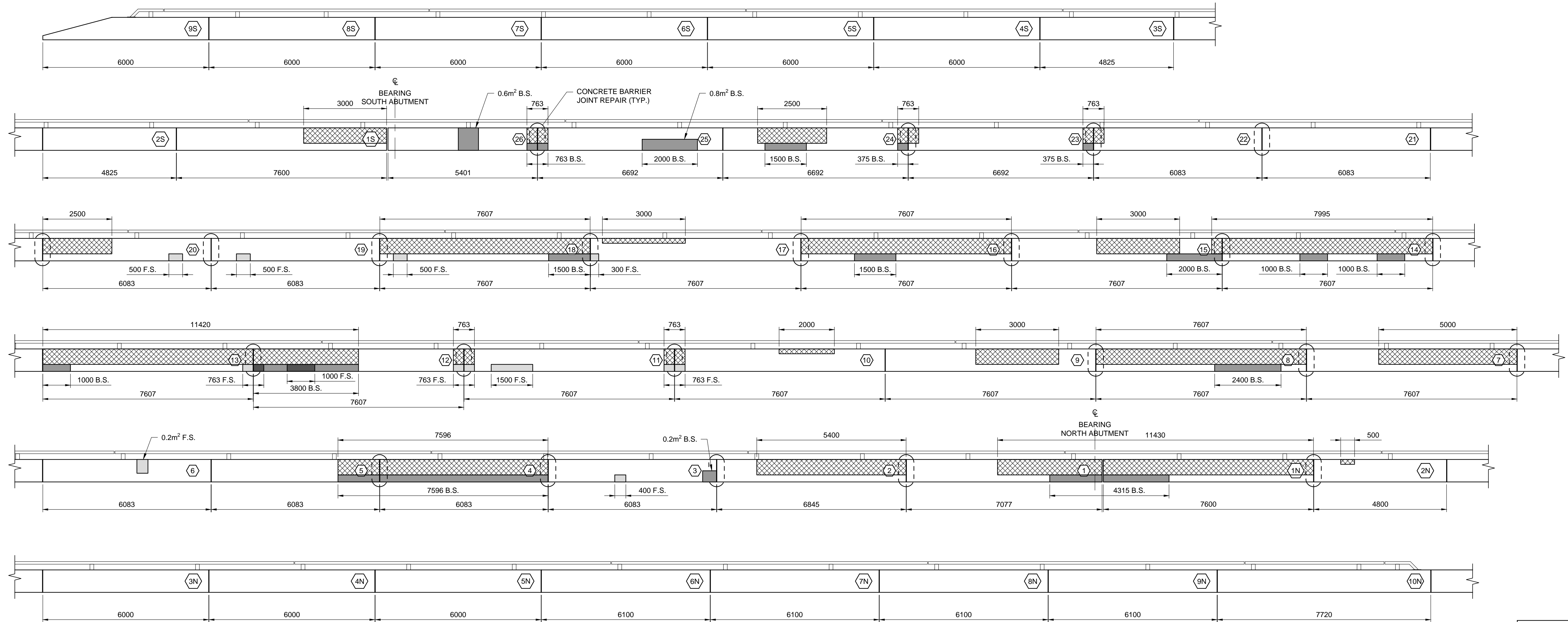


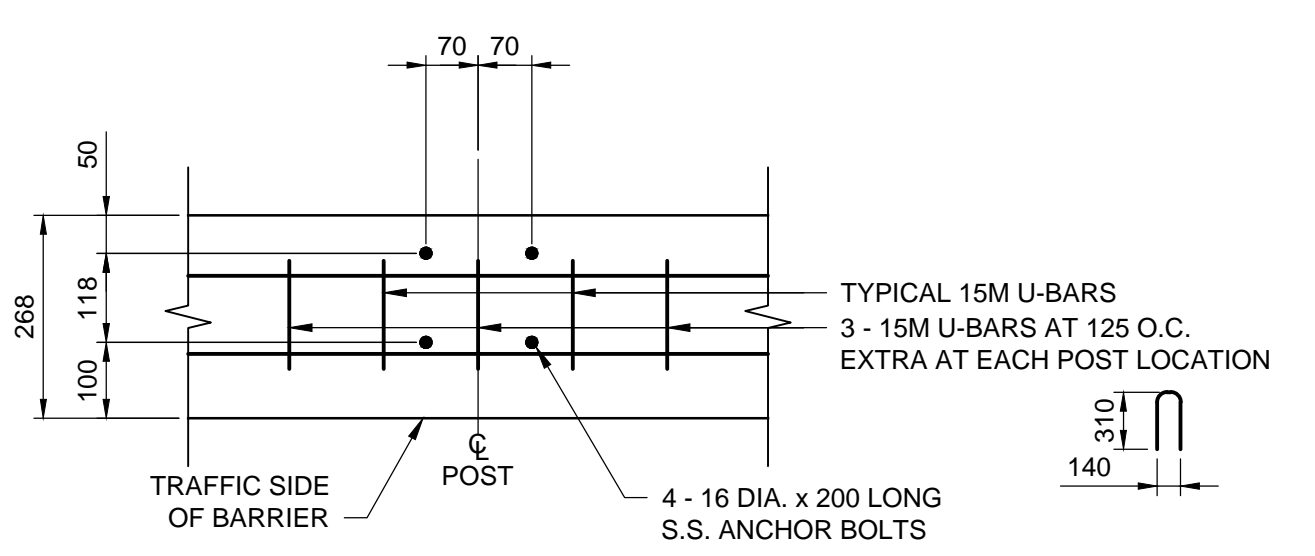
SOUTH



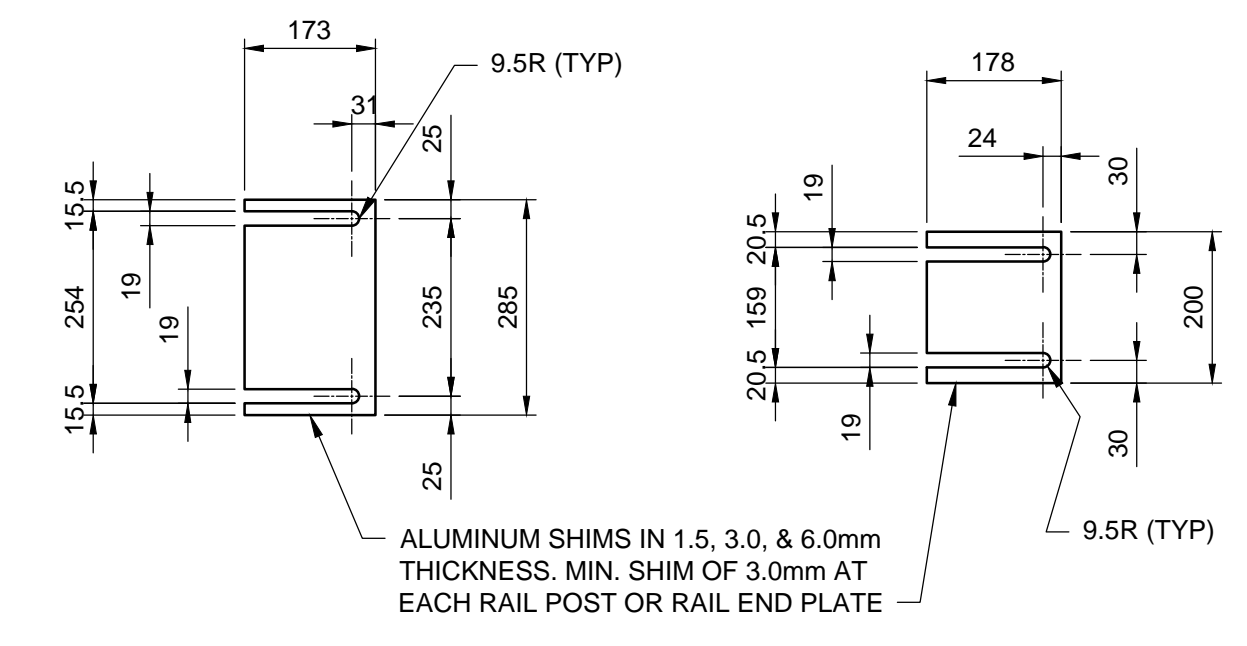
NORTH

CURB LANE BARRIER ELEVATION

1:75
LOOKING WEST



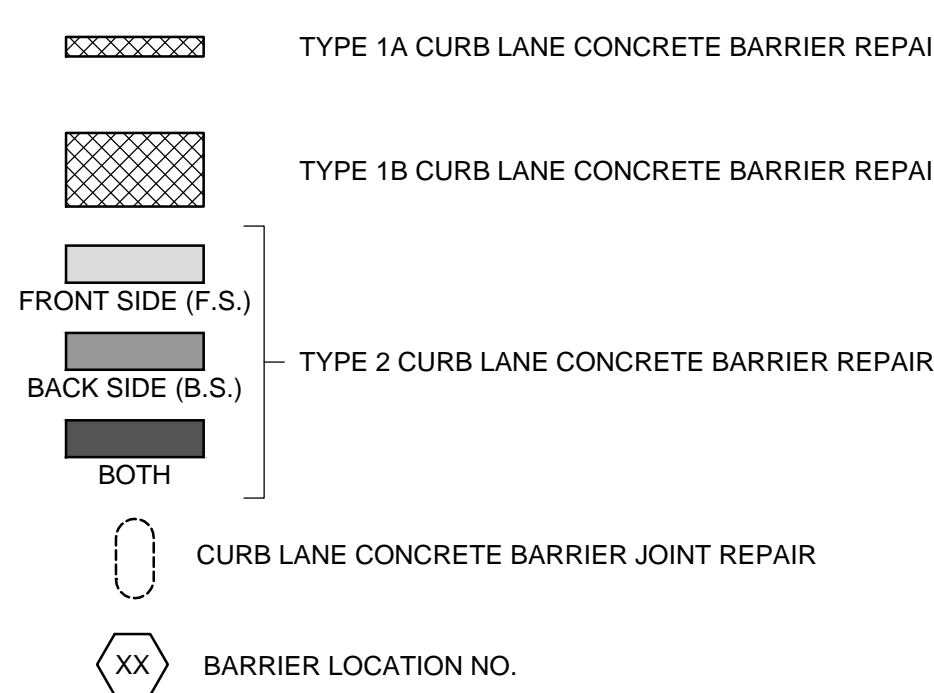
TRAFFIC BARRIER RAIL POST ANCHOR BOLT LAYOUT



SHIM PLATE DETAIL

- NOTES:
1. A COMBINATION OF 1.5, 3.0, AND/OR 6.0mm THICK ALUMINUM RAIL POST OR END PLATE SHIMS ARE TO BE USED AS REQUIRED TO SET THE BARRIER RAIL TO THE SPECIFIED HEIGHT. (MINIMUM 3.0mm SHIM REQUIRED AT EACH POST OR PLATE.)
 2. BOTTOM SURFACE OF SHIM (SURFACE IN CONTACT WITH CONCRETE) IS TO BE PAINTED WITH TWO COATS OF ALKALI RESISTANCE BITUMINOUS PAINT, EACH COAT BEING 1mm IN THICKNESS.

REPAIR LEGEND



APPROXIMATE QUANTITY

Type 1A CURB LANE CONCRETE BARRIER REPAIR	6 m
Type 1B CURB LANE CONCRETE BARRIER REPAIR	89 m
Type 2 CURB LANE CONCRETE BARRIER REPAIR	10.7 m ²
CURB LANE CONCRETE BARRIER JOINT REPAIR	23

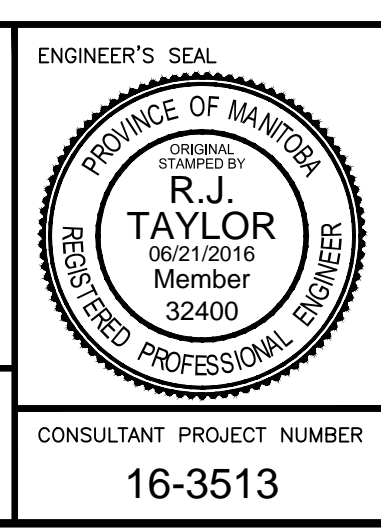
- NOTES:
1. DIMENSIONS SHOWN OF EXISTING BARRIERS ARE APPROXIMATE.
 2. LOCATIONS SHOWN OF EXISTING BARRIER RAIL AND POSTS ARE APPROXIMATE.
 3. DIMENSIONS SHOWN OF REPAIR AREAS ARE APPROXIMATE. LAYOUT ACTUAL REPAIR AREAS WITH CONTRACT ADMINISTRATOR ON SITE.
 4. SEE SPECIFICATION FOR REPAIR PREPARATION AND CONCRETE REPLACEMENT DETAILS.

METRIC

WHOLE NUMBERS INDICATE MILLIMETRES
DECIMALIZED NUMBERS INDICATE METRES



B.M. ELEV.	DESIGNED BY DRA
	DRAWN BY KB
	CHECKED BY RJT
	APPROVED BY SSR
	HOR. SCALE -
	VERTICAL
0 ISSUED FOR TENDER	6/21/16 RJT
NO. REVISIONS	DATE BY DATE JUNE 21, 2016



THE CITY OF WINNIPEG
PUBLIC WORKS DEPARTMENT

2016 BRIDGE MAINTENANCE - ST. JAMES
SOUTHBOUND BRIDGE REPAIRS

ST. JAMES SB BARRIER REPAIR LAYOUT 1

CITY DRAWING NUMBER B101-16-04
SHEET 04 OF 11
CONSULTANT DRAWING NUMBER --

CONSULTANT PROJECT NUMBER 16-3513