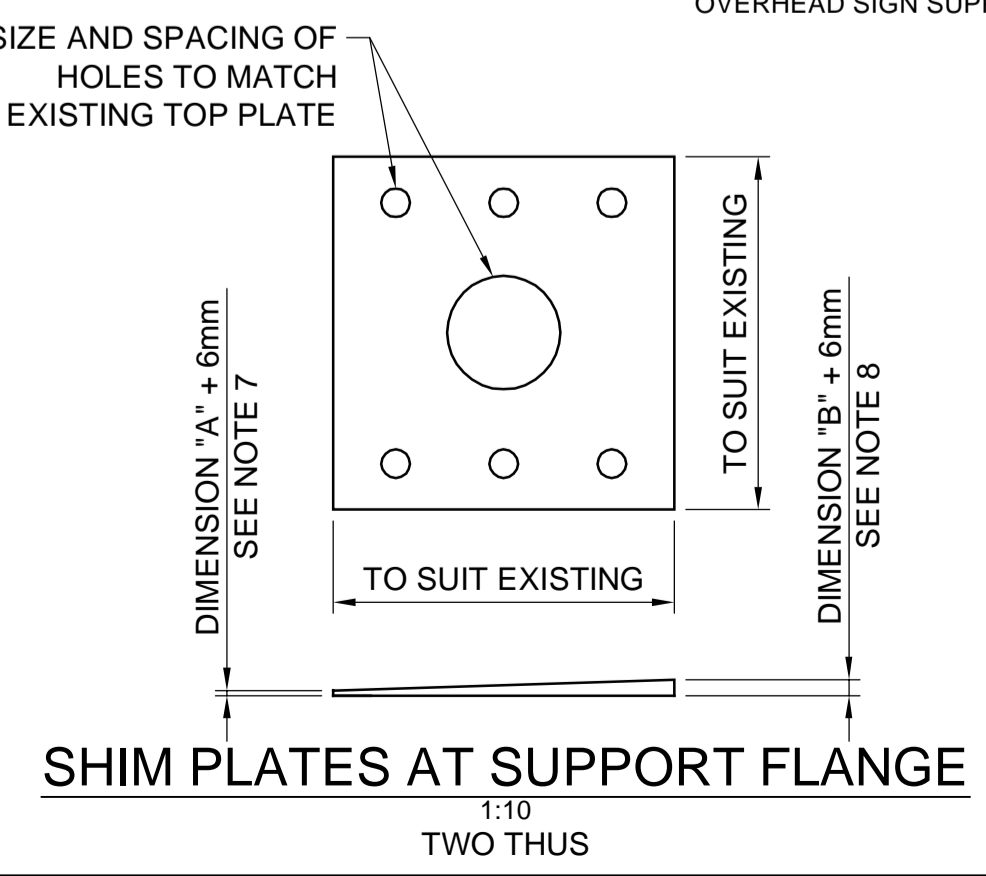
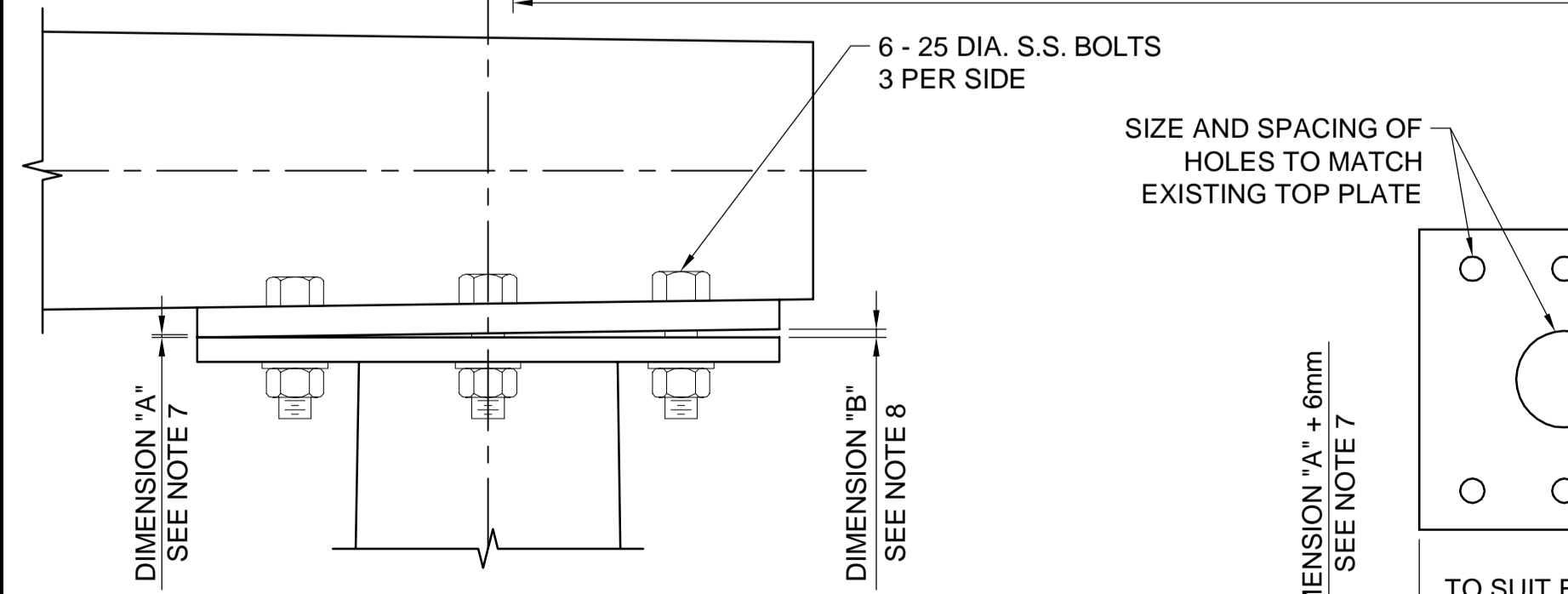


- NOTES:**
1. REPLACE ALL EXISTING S.S. SPLICE/FLANGE BOLTS WITH ASTM A325 TYPE 1 HOT-DIP GALVANIZED BOLTS C/W 1 NUT AND 2 WASHERS, LENGTH OF BOLT TO SUIT.
 2. APPROX. MASS OF EXISTING STEEL STRUCTURE: 3000kg.
 3. EXACT LOCATION OF SIGN PANELS AND SIGN PANEL BRACKETS SHALL BE FIELD MEASURED AND RECORDED BY THE CONTRACTOR PRIOR TO REMOVAL.
 4. FINAL INSTALLED LOCATION OF SIGNS AND MOUNTING BRACKETS WILL BE DETERMINED BY THE CONTRACT ADMINISTRATOR.

- SHIM PLATE NOTES:**
5. CONTRACTOR SHALL PERFORM DETAILED MEASUREMENTS IN THE FIELD TO DETERMINE THICKNESS OF REQUIRED SHIM PLATE. MEASUREMENTS SHALL BE OBTAINED WHEN CROSS-ARM IS FULLY LOADED (SIGN PANELS AND BRACKETS ATTACHED) AND UNDER ITS OWN SELF WEIGHT.
 6. DIMENSION "A" SHALL BE THE MEASURED GAP BETWEEN THE PLATES AT THE LOCATION SHOWN.
 7. DIMENSION "B" SHALL BE THE MEASURED GAP BETWEEN THE PLATES AT THE LOCATION SHOWN.

SITE ELEVATION - LOOKING WEST
OVERHEAD SIGN SUPPORT STRUCTURE No. S654



APEGM
Certificate of Authorization
Dillon Consulting Limited (MB)
No. 1789 Date: JUNE 20, 2016

B.M. ELEV.	DESIGNED BY	DRA
	DRAWN BY	KB
	CHECKED BY	SSR
	APPROVED BY	RJT
	HOR. SCALE	-
	VERTICAL	-
0 ISSUED FOR TENDER	6/20/16	RJT
NO. REVISIONS	DATE	BY
		DATE: JUNE 20, 2016

DILLON CONSULTING

RELEASED FOR CONSTRUCTION

ENGINEER'S SEAL

PROVINCE OF MANITOBA

R.J. Taylor
06/20/2016
Member
32400

REGISTERED PROFESSIONAL ENGINEER

CONSULTANT PROJECT NUMBER
16-3387

THE CITY OF WINNIPEG
PUBLIC WORKS DEPARTMENT

STEEL OVERHEAD SIGN SUPPORT STRUCTURES - 2016 MAINTENANCE WORKS

S654 BISHOP GRANDIN BLVD. WB 2ND STRUCTURE EAST OF PEMBINA HWY.

CITY DRAWING NUMBER
S654-16-01

SHEET 4 OF 06

CONSULTANT DRAWING NUMBER
--

METRIC

WHOLE NUMBERS INDICATE MILLIMETRES
DECIMALIZED NUMBERS INDICATE METRES