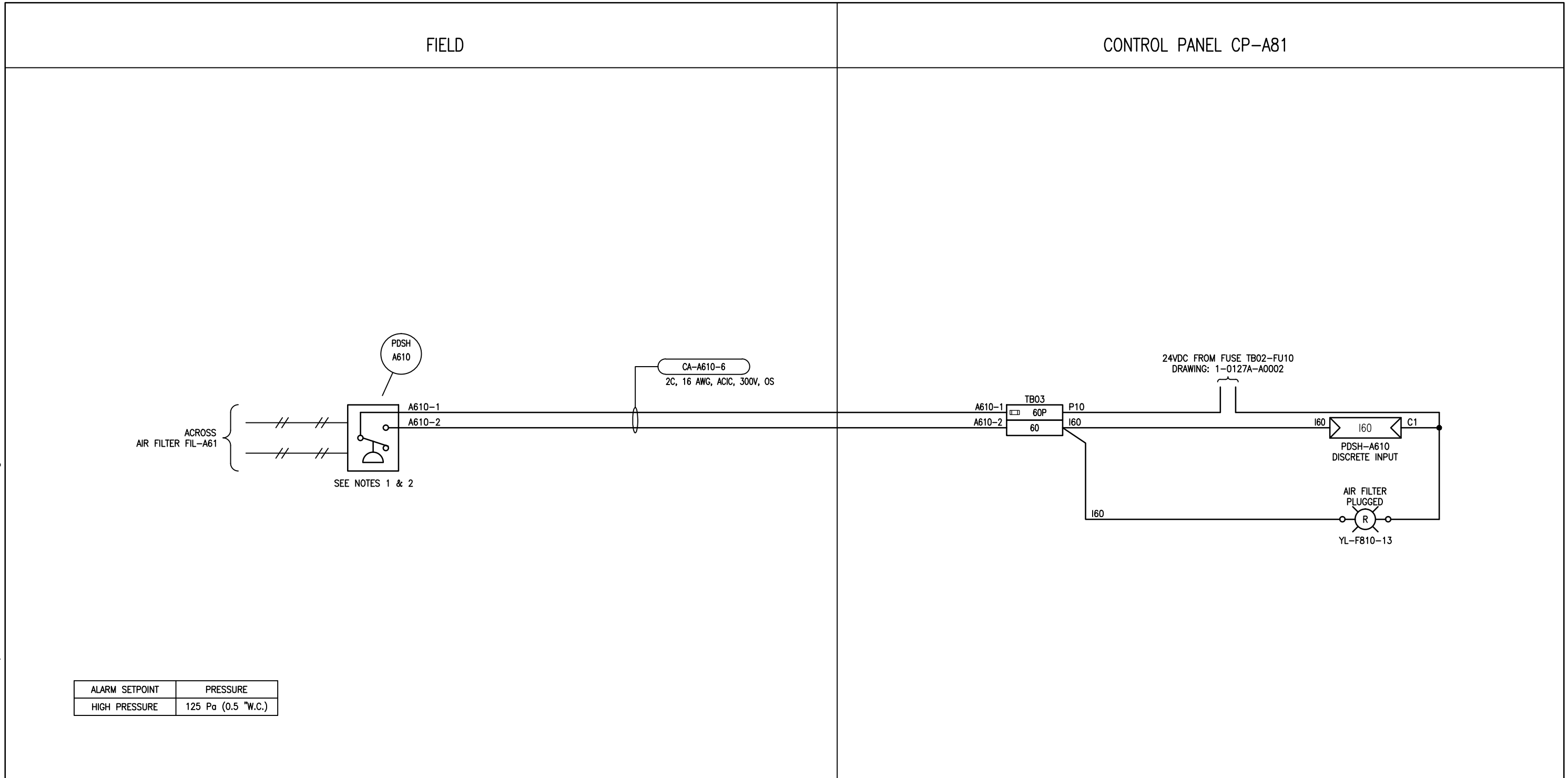


B SIZE - 279mm x 432mm

LAST SAVE: 2016/05/09 - 8:31am  
 PATH: M:\632354\4ENG\48&C\DD - General DWG\1-0127A-A0021-001-00.dwg



ALARM SETPOINT	PRESSURE
HIGH PRESSURE	125 Pa (0.5 "W.C.)

**NOTES:**

- PROVIDE AND INSTALL NEW DIFFERENTIAL PRESSURE SWITCH.
- PRESSURE SWITCH CONTACT TO BE OPEN WHEN FILTER IS NOT PLUGGED, AND CLOSED WHEN FILTER IS PLUGGED.



NO.	REVISIONS	DATE	DESIGN	CHECK
00	ISSUED FOR TENDER, BID OP. 331-2016	2016/05/05	BJC	FA

**SNC-LAVALIN INC.**  
 148 Nature Park Way  
 Winnipeg, MB, Canada R3P 0X7  
 204-786-8080

DESIGNED BY: B. CLEVEN	CHECKED BY: F. ATAEI
DRAWN BY: Y. KONIG	APPROVED BY: I. PARKINSON
SCALE: NTS	DATE: 2016/02/08
ISSUED FOR CONSTRUCTION	
BY: K. ZUREK	DATE: 2016/05/06
CONSULTANT NO.:	

ENGINEER'S SEAL

ORIGINAL DRAWING  
 SEALED BY:  
 B. CLEVEN  
 SNC-LAVALIN  
 MEMBER # 31479  
 2016/05/05  
 REV. 00

**THE CITY OF WINNIPEG**  
 WATER AND WASTE DEPARTMENT

COCKBURN FLOOD AND WASTEWATER PUMPING STATION  
 2016 UPGRADES  
 LOOP DIAGRAM  
 AIR FILTER PLUGGED SWITCH  
 PDSH-A610

CITY DRAWING NUMBER	SHEET	REV.	SIZE
1-0127A-A0021	001	00	B