

NOTES:

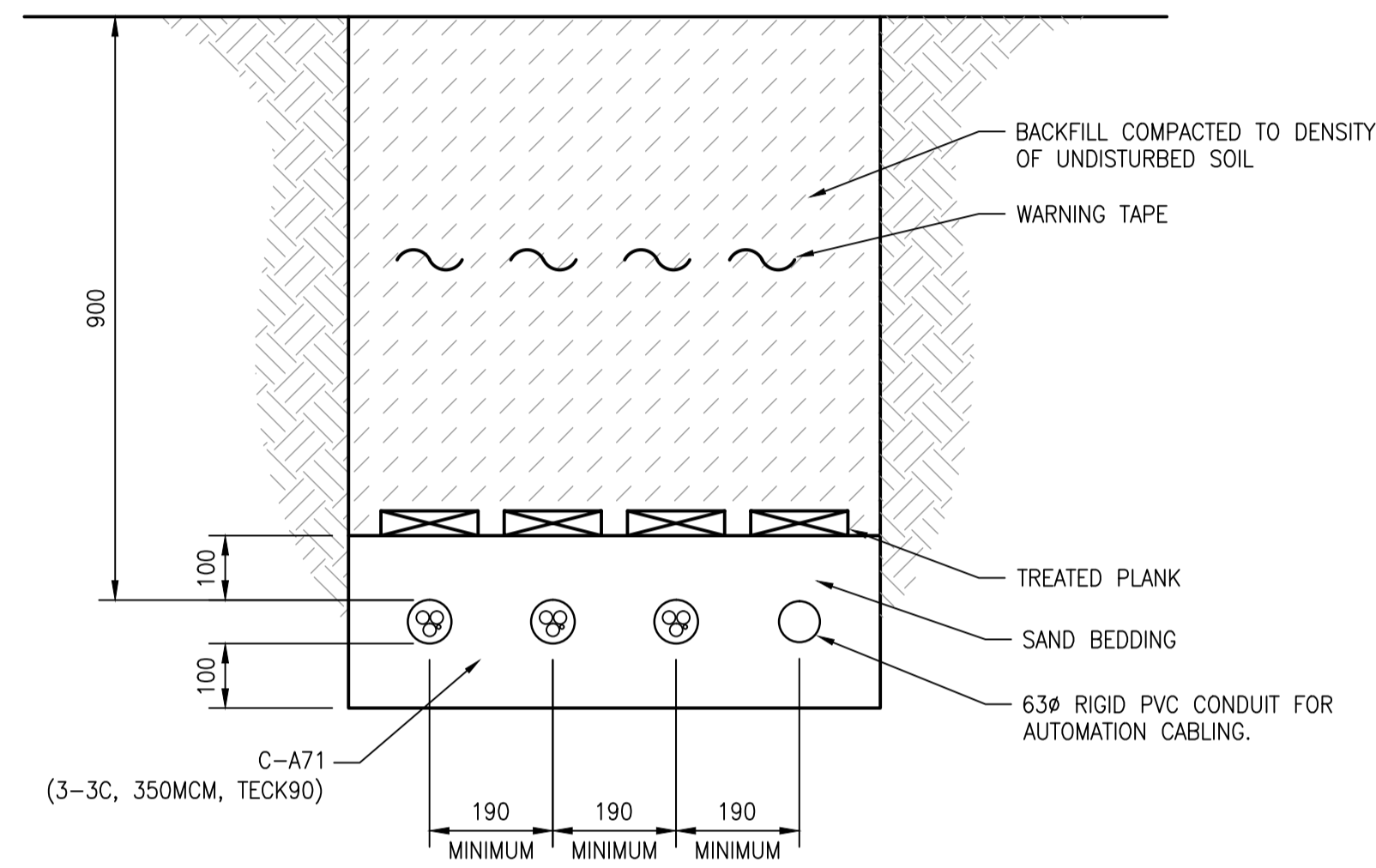
- 1 PROVIDE AND INSTALL NEW UNISTRUT FOR CLIPPING CABLING AND CONDUIT TO BUILDING EXTERIOR.
- 2 PROVIDE AND INSTALL NEW ENCLOSED DIAMOND CHECKER PLATE COVER TO CONCEAL CABLES AND CONDUIT.

MINIMUM SIZE 75x125

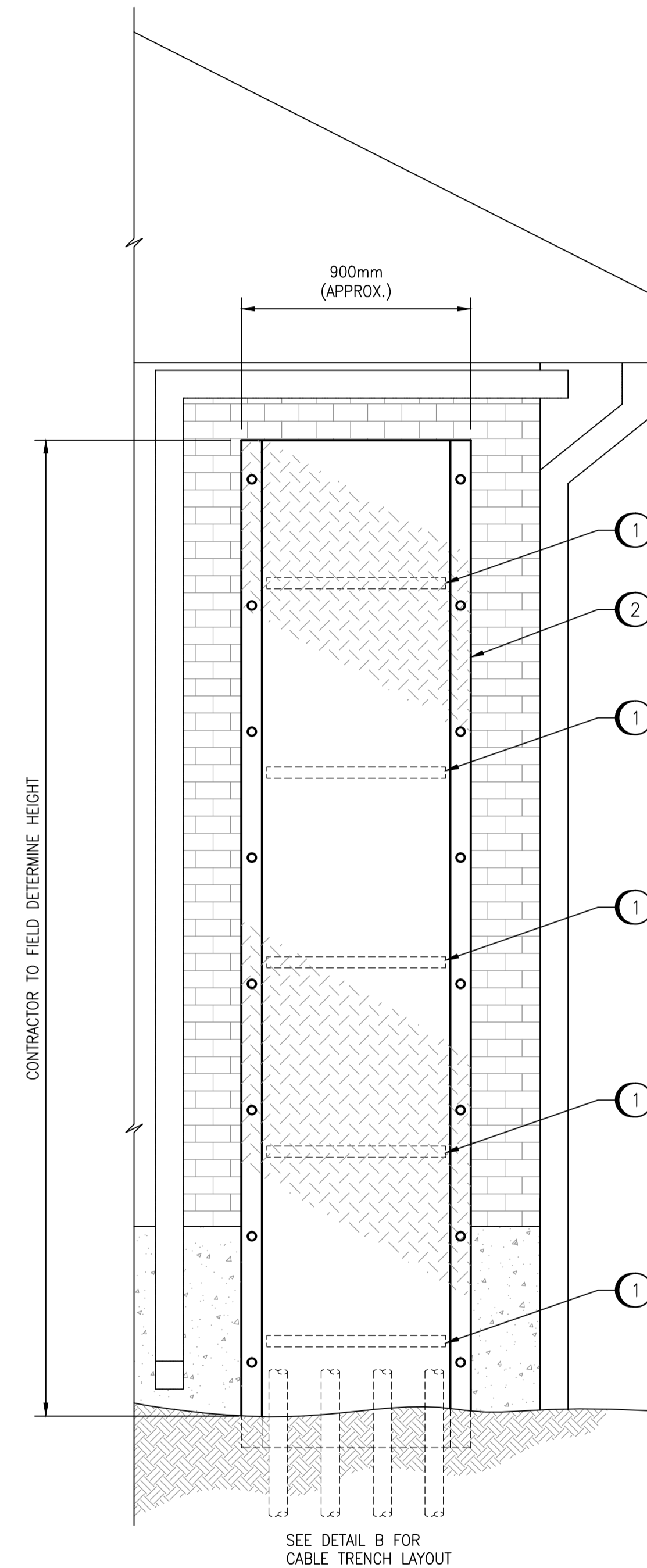
UNDERGROUND CONDUCTORS

CIRCUIT I.D.: C-A71
 YEAR INSTALLED: 2016
 DIAGRAM: D10 DETAIL: 3 TABLE: D10A
 SIZE/TYPE OF CONDUCTOR: 3-3C, 350 MCM, TECK90
 AMPACITY: 962A MAX. OVERCURRENT: 900A

A
 C-A71 LAMACOID
 SCALE: NTS



B
 C-A71 TRENCH LAYOUT
 SCALE: 1 : 10



C
 CABLE AND CONDUIT COVER
 SCALE: N.T.S.

1-0127A-E0003	ELECTRICAL SITE PLAN
DRAWING NUMBER	REFERENCE DRAWINGS



NO.	REVISIONS	DATE	DESIGN	CHECK
00	ISSUED FOR TENDER, BID OP. 331-2016	2016/05/06	BJC	DB

 SNC-LAVALIN INC. 148 Nature Park Way Winnipeg, MB, Canada R3P 0X7 204-786-8080	
DESIGNED BY: B. CLEVEN	CHECKED BY: D. BECKER
DRAWN BY: Y. KONIG	APPROVED BY: I. PARKINSON
SCALE: AS SHOWN	ISSUED FOR CONSTRUCTION BY: K. ZUREK
DATE: 2016/02/02	DATE: 2016/05/06
CONSULTANT NO.:	

ENGINEER'S SEAL

ORIGINAL DRAWING
 SEALED BY:
 B. CLEVEN
 SNC-LAVALIN
 MEMBER #31479
 2016/05/06
 REV. 00

 THE CITY OF WINNIPEG WATER AND WASTE DEPARTMENT			
COCKBURN FLOOD AND WASTEWATER PUMPING STATION 2016 UPGRADES INSTALLATION DETAILS 600V POWER CABLING			
CITY DRAWING NUMBER	SHEET	REV.	SIZE
1-0127A-E0015	001	00	A1