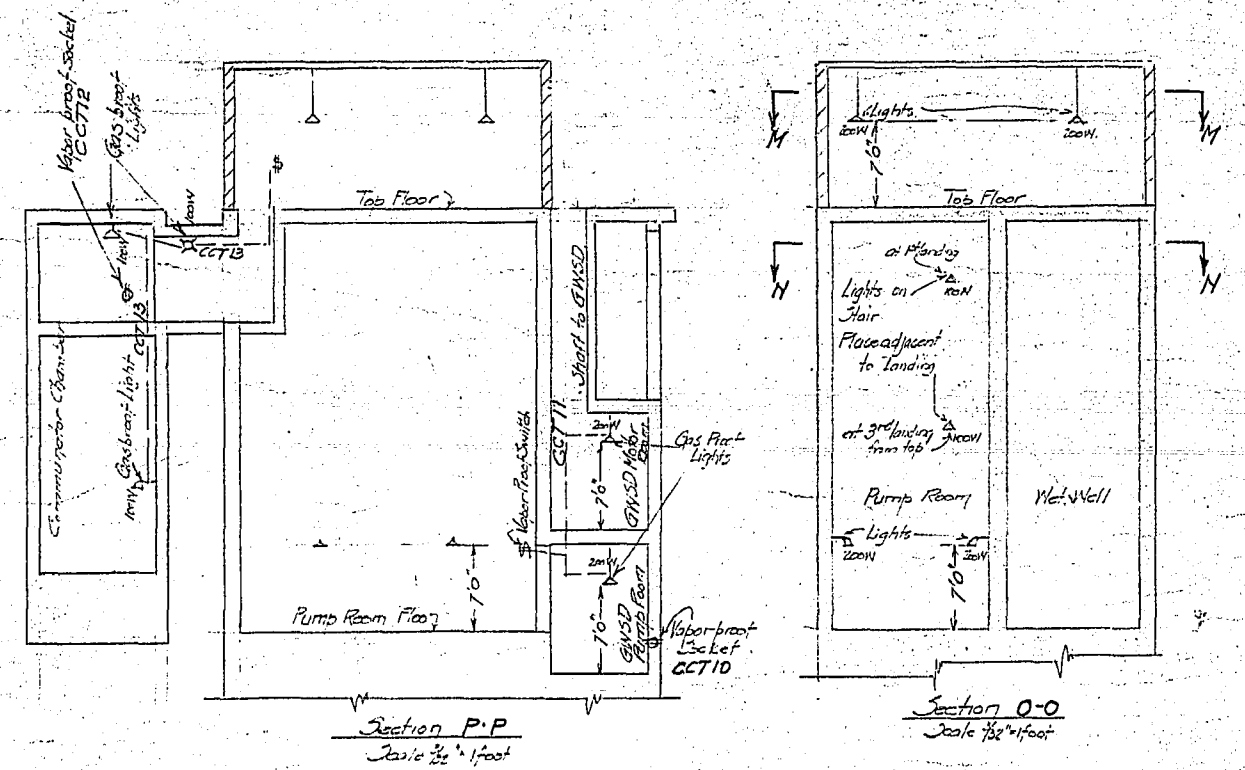
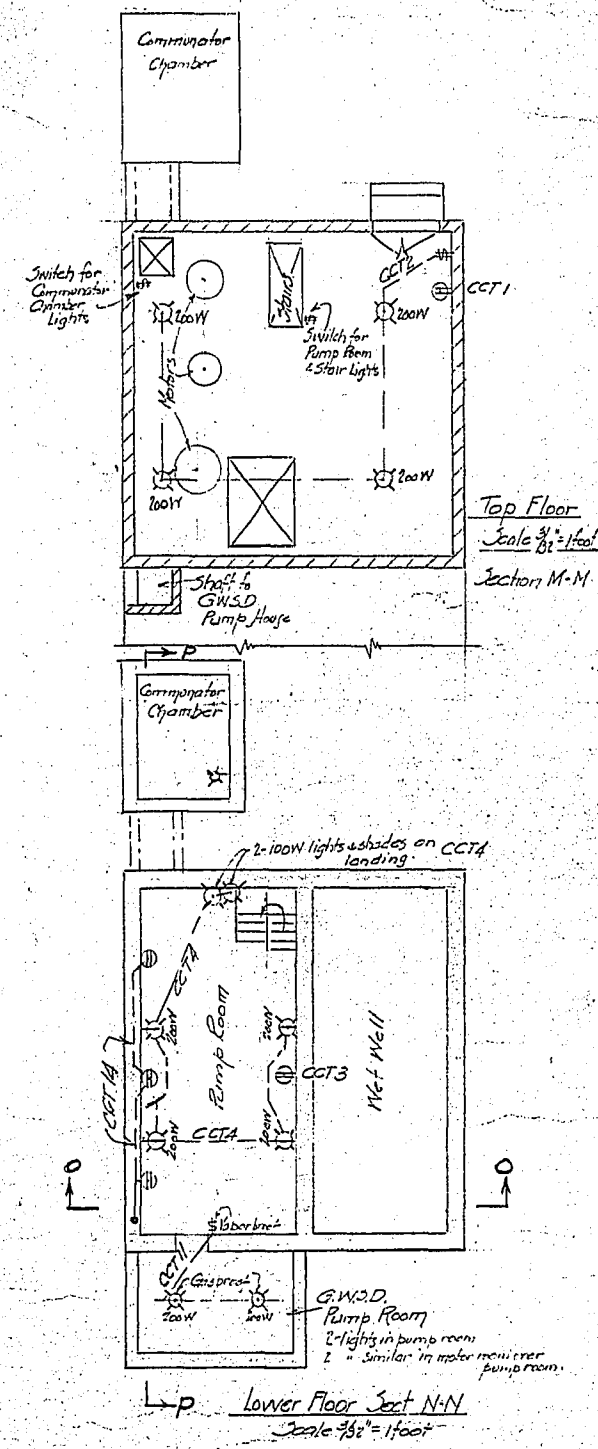
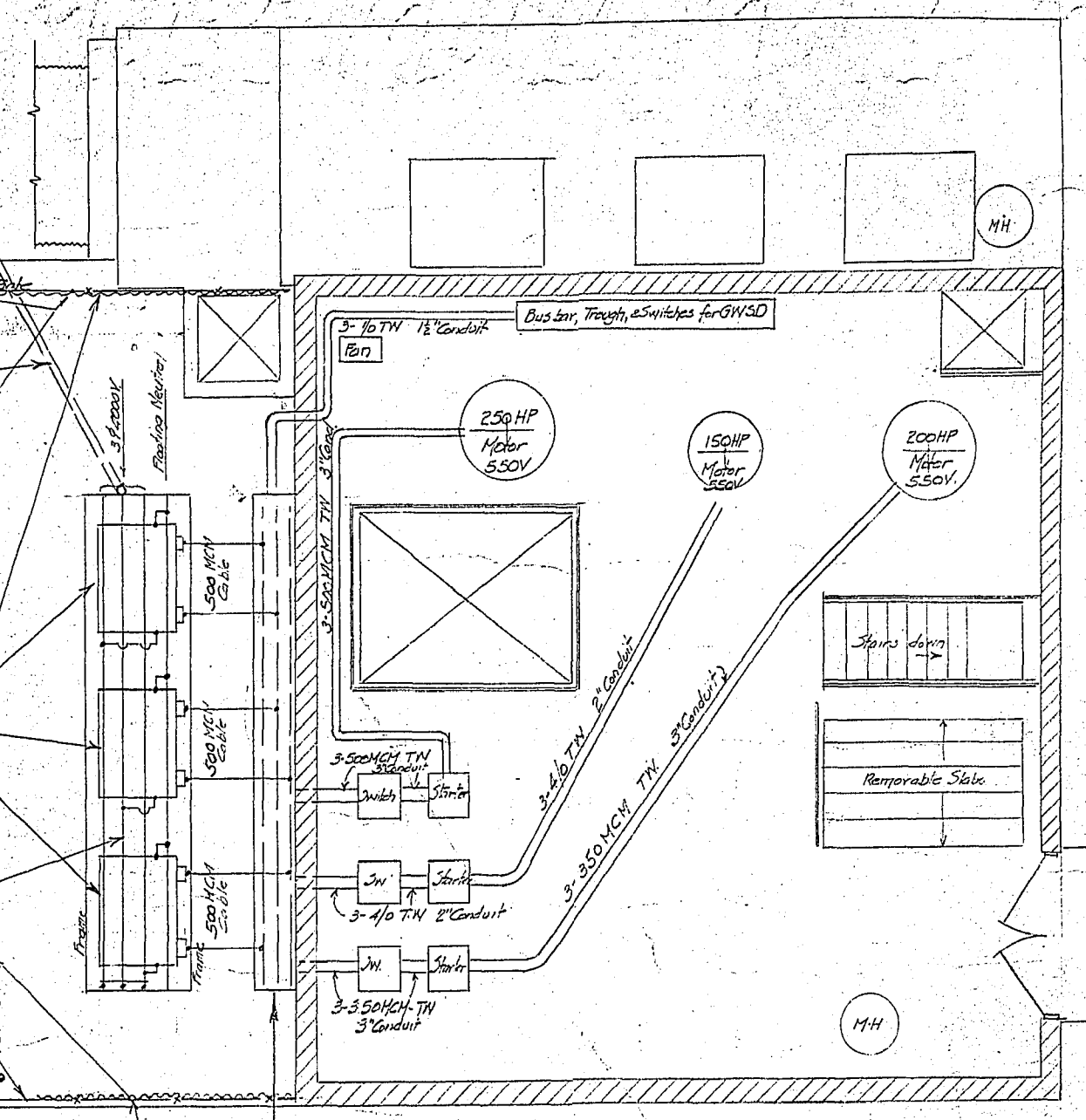
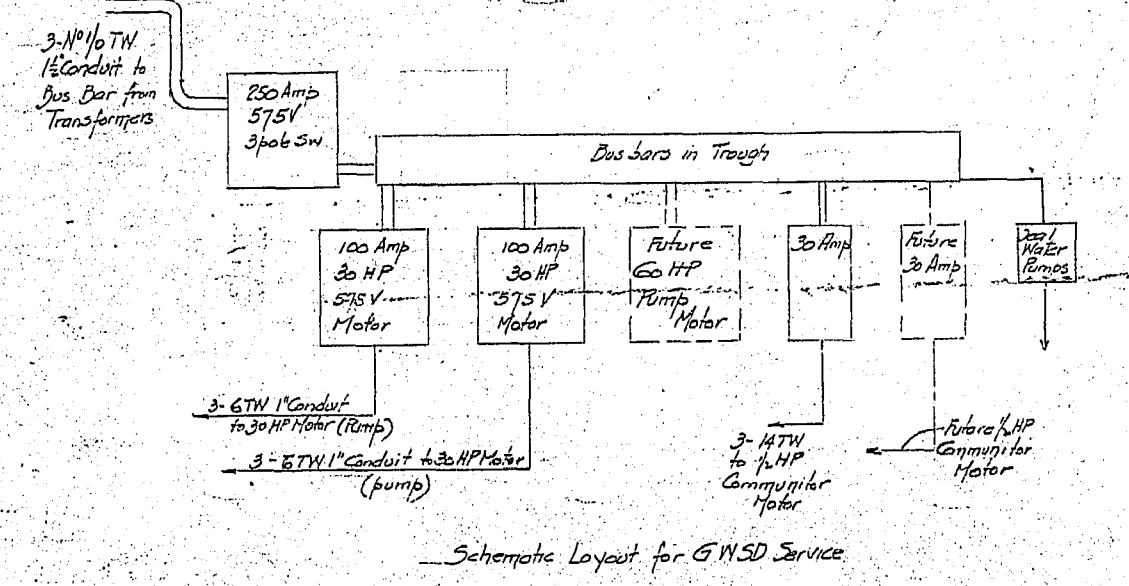
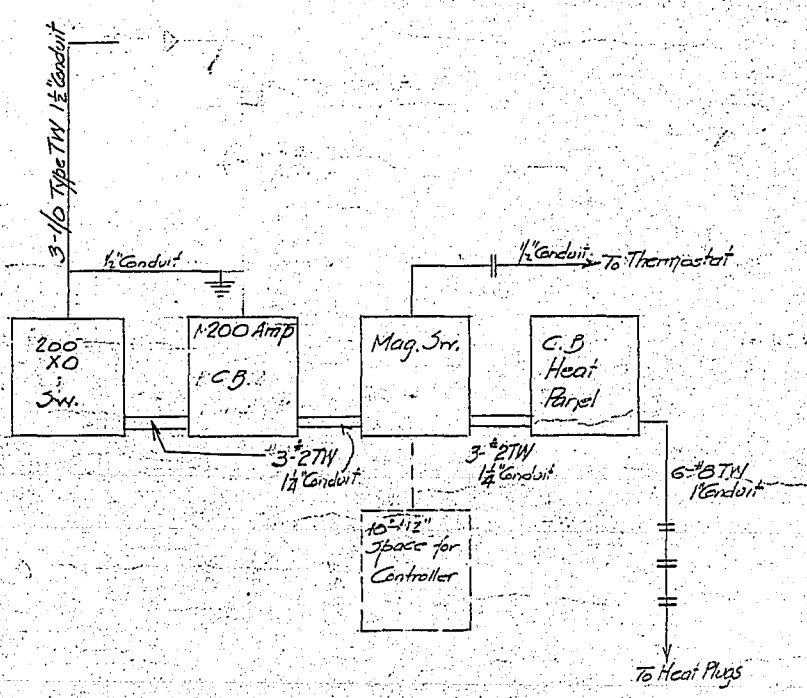
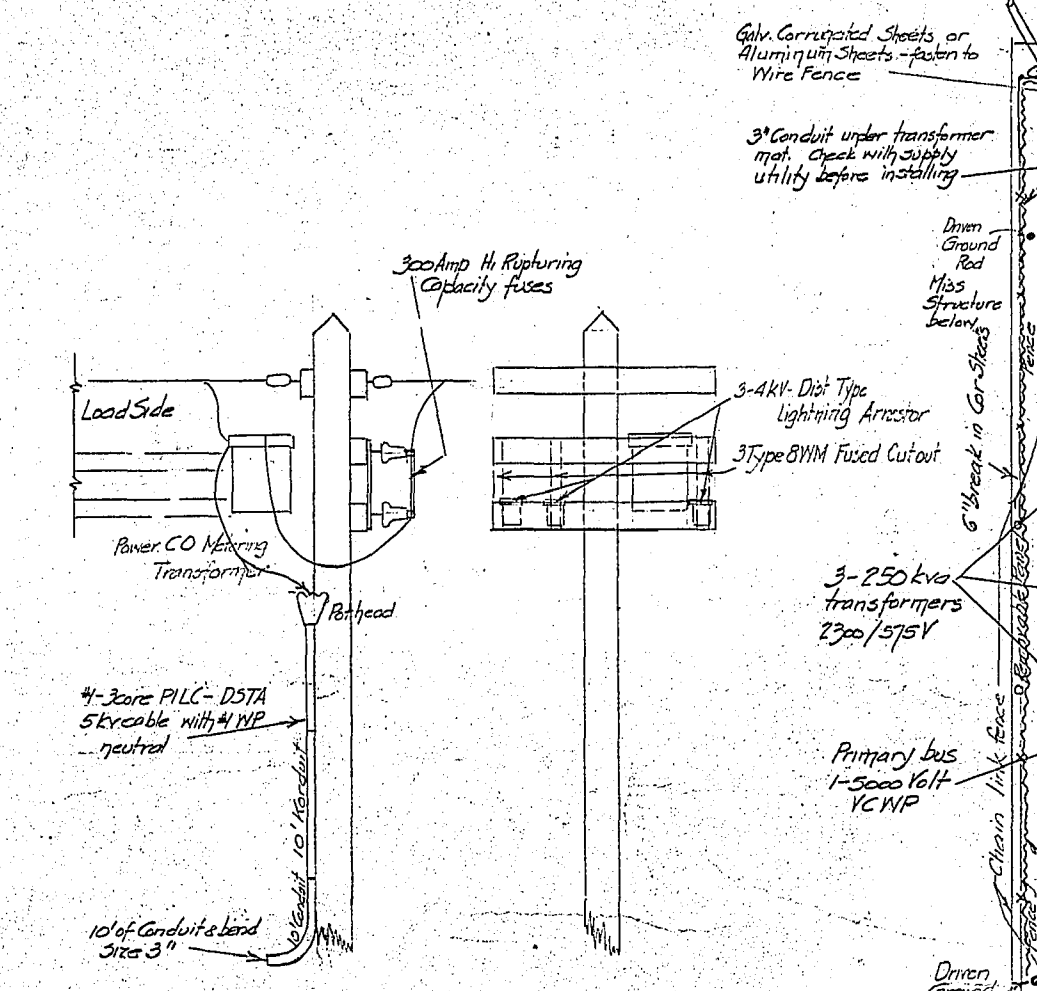


CCT No.	Description	C.S.
1	1 plug Top floor	15 Amp
2	Top floor lights 4-200W	15 Amp
3	1 plug Pump Room floor	15 Amp
4	1 plug Room lights 4-100W 2-100W	15 Amp
5	Fan 220V 1HP	2-20 Amp
6	Jump Pump 1/2 HP	1-20 Amp
7	Spare	15 "
8	Spare	15 "
9	Wire	15 "
10	GWSD plug water proof	15 Amp
11	4-200 W. Spot light	15 Amp
12	1 plug Vapor Proof Comm. Operator	15 Amp
13	3-100W. Vapor Proof L.H.S.	15 Amp
14	Heat Sub	2-30 Amp

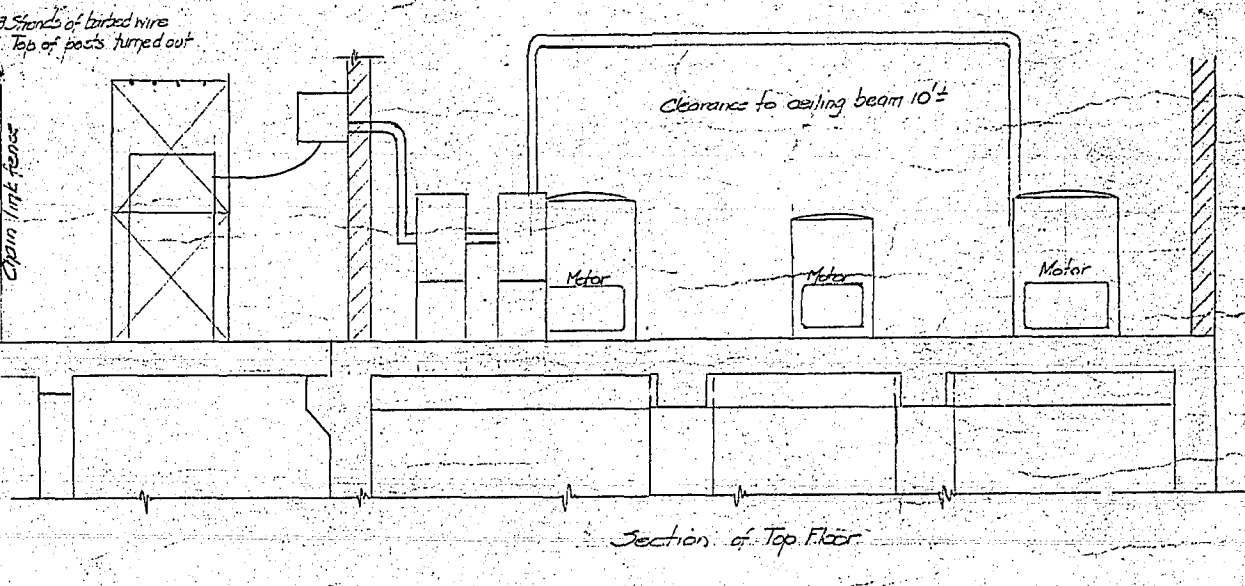


Lighting



Motors

Flood Pump	1- 250HP	550V
	1- 200HP	550V
	1- 150HP	550V
GWSD pump	2- 30HP	550V
	1- 60 HP	550V (future)
Seal Water	2- 1/2 HP	550V
	1- 1/2 HP	550V
Commutators	2- 1/2 HP	550V
Fan	1 HP	220V
Jump pump	1/2 HP	110V



Section of Top Floor

COCKBURN STREET FLOOD PUMPING STATION
ELECTRICAL

CITY OF WINNIPEG
ENGINEERING DEPARTMENT
W. D. HURST, CITY ENGINEER
A. J. S. TAUNTON, DEPUTY CITY ENGINEER

DATE: May 11, 1924
SCALE: As Shown
DRAWING NO.: 282-9-1

APPROVED: [Signature]



R-142