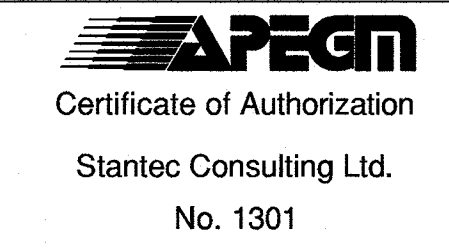


**WATER SERVICE INFORMATION**

ADDRESS	SIZE (mm) MATERIAL (STREET)	SIZE (mm) MATERIAL (PROP.)	SHORT & LONG MEASUREMENT	CORP. LOCATION	REMARKS
431 BOREHAM BV. RESIDENTIAL	19 CU	25 CU	10.5 SNLL	0.3 S OF S/C	RECONNECT SERVICE
430 BOREHAM BV. RESIDENTIAL	19 CU	19 CU	12.1 LRHL	0.2 S OF S/C	RECONNECT SERVICE
429 BOREHAM BV. RESIDENTIAL	-	-	73.2 S HYD @ #423 & 425	0.1 S OF S/C	RECONNECT SERVICE
428 BOREHAM BV. RESIDENTIAL	-	-	7.6 SNHL	-	RECONNECT SERVICE
428 BOREHAM BV. RESIDENTIAL	19 CU	-	39.6 NNL MOUNTBATTEN	-	RECONNECT SERVICE
427 BOREHAM BV. RESIDENTIAL	-	-	9.6 SNHL	-	RECONNECT SERVICE
426 BOREHAM BV. RESIDENTIAL	-	-	48.0 NNL MOUNTBATTEN	-	RECONNECT SERVICE
425 BOREHAM BV. RESIDENTIAL	-	-	7.0 SNHL	0.4 S OF S/C	RECONNECT SERVICE
425 BOREHAM BV. RESIDENTIAL	-	-	63.4 NNL MOUNTBATTEN	-	RECONNECT SERVICE
424 BOREHAM BV. RESIDENTIAL	-	-	8.4 SNHL	0.4 S OF S/C	RECONNECT SERVICE
424 BOREHAM BV. RESIDENTIAL	-	-	74.7 NNL MOUNTBATTEN	-	RECONNECT SERVICE
424 BOREHAM BV. RESIDENTIAL	-	-	2.1 NSBL	0.5 S OF S/C	RECONNECT SERVICE
424 BOREHAM BV. RESIDENTIAL	-	-	7.3 SNHL	OPP OF S/C	RECONNECT SERVICE
424 BOREHAM BV. RESIDENTIAL	-	-	99.4 NNL MOUNTBATTEN	-	RECONNECT SERVICE

\* SERVICES TO BE RENEWED TO P/L ALL OTHERS TO BE RECONNECTED

NOTE: ALL GATE VALVES TO BE CLOCKWISE TO CLOSE (BLACK OPERATING NUT)



**WARNING**  
 IF POWER EQUIPMENT OR EXPLOSIVES ARE TO BE USED FOR EXCAVATION ON THIS PROJECT THE CONTRACTOR MUST:  
 1) NOTIFY THE GAS COMPANY OF THE PROPOSED LOCATION OF EXCAVATION.  
 2) TAKE PRECAUTION TO AVOID DAMAGE TO GAS COMPANY INSTALLATIONS.  
 SEE PROVINCIAL REGULATION 210/72 FOR DETAILS

**LOCATION APPROVED UNDERGROUND STRUCTURES**  
 SUPV. U/G STRUCTURES COMMITTEE DATE  
 NOTE:  
 LOCATION OF UNDERGROUND STRUCTURES AS SHOWN ARE BASED ON THE BEST INFORMATION AVAILABLE BUT NO GUARANTEE IS GIVEN THAT ALL EXISTING UTILITIES ARE SHOWN OR THAT THE GIVEN LOCATIONS ARE EXACT. CONFIRMATION OF EXISTENCE AND EXACT LOCATION OF ALL UTILITIES MUST BE OBTAINED FROM THE INDIVIDUAL UTILITIES BEFORE PROCEEDING WITH CONSTRUCTION.

B.M. 50-42 ELEV. 234.335m	648334 - N.E. Cor. Boreham Blvd. & Mountbatten Ave. 10ft. on top of 0.05 m dia. x 2.4 m iron pipe, 2.3 m W. of E.L. of Boreham Blvd. & 4.5 m S. of N.L. of Mountbatten Ave.
ISSUED FOR TENDER	16/04/21 R.S.
NO. REVISIONS	DATE BY

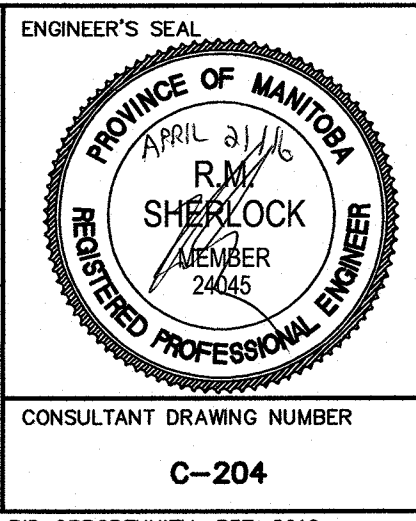
**Stantec**

DESIGNED BY	J.H.	CHECKED BY	R.S.
DRAWN BY	J.H.	APPROVED BY	R.S.
SCALE:	HORIZONTAL 1:250	RELEASED FOR CONSTRUCTION	DATE
	VERTICAL 1:50		2016 04 21

ENGINEER'S SEAL: APRIL 21 2016 R.M. SHERLOCK MEMBER 24045 REGISTERED PROFESSIONAL ENGINEER

CONSULTANT DRAWING NUMBER: C-204

PLOT DATE: 2016 04 21



**THE CITY OF WINNIPEG**  
 WATER AND WASTE DEPARTMENT  
 ENGINEERING DIVISION

2016 WATERMAIN RENEWALS  
 CONTRACT 6  
**BOREHAM BOULEVARD**  
 MOUNTBATTEN AVENUE TO  
 100 NNL OF MOUNTBATTEN AVENUE

SHEET 5 OF 14  
 CITY DRAWING NUMBER  
**D-14351**

