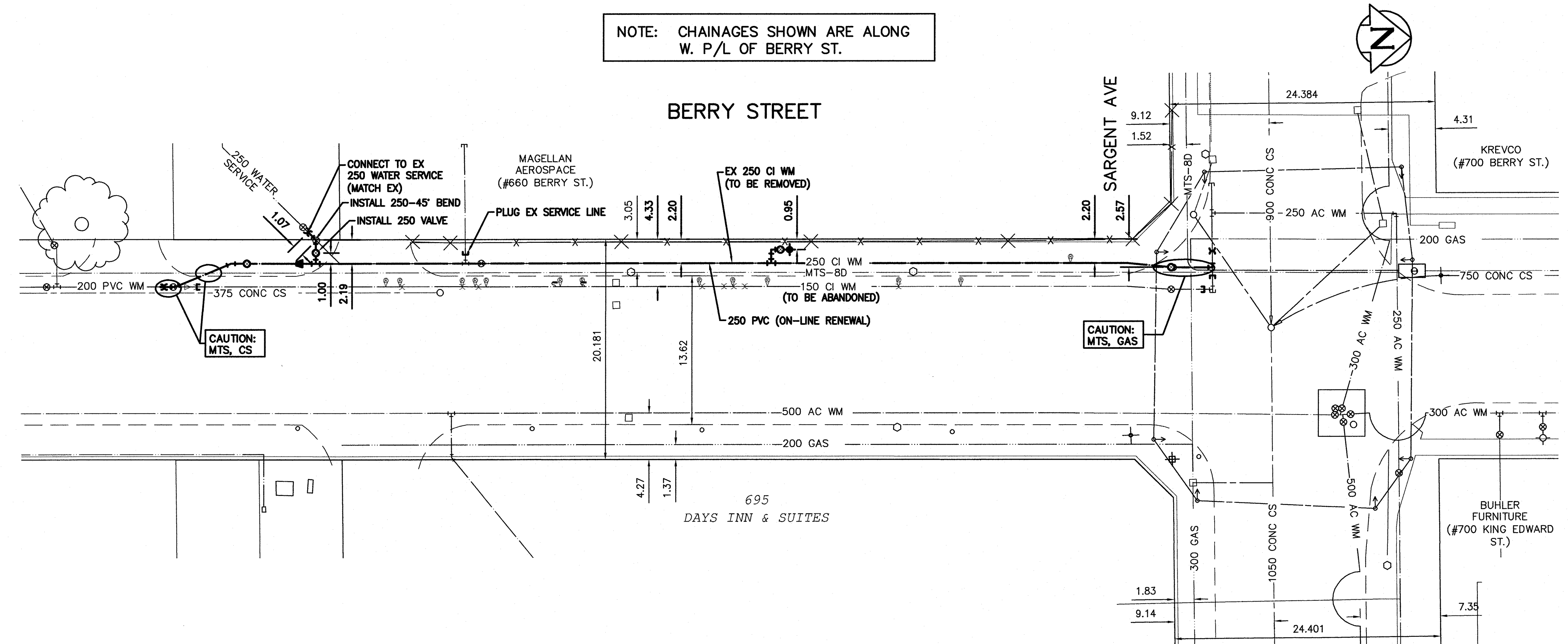


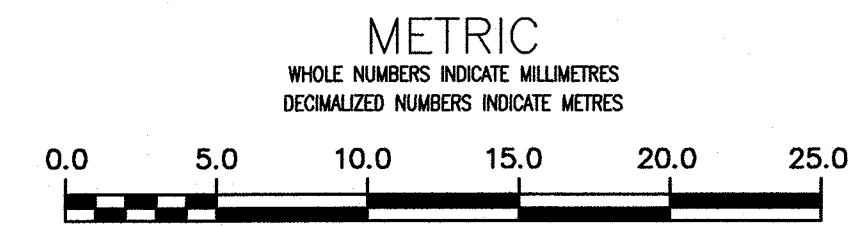
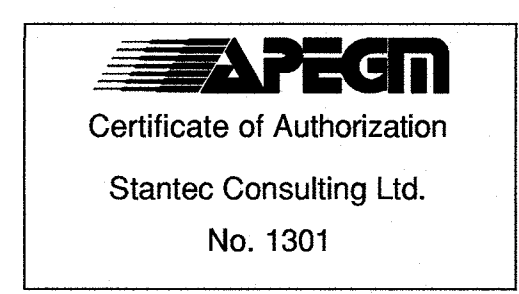
NOTE: CHAINAGES SHOWN ARE ALONG W. P/L OF BERRY ST.

WATER SERVICE INFORMATION					
ADDRESS	SIZE (mm) MATERIAL (STREET)	SIZE (mm) MATERIAL (PROP.)	SHORT & LONG MEASUREMENT	CORP. LOCATION	REMARKS
660 BERRY ST. RESIDENTIAL	250 CI	250 CI	8.0 W OF HYD	-	RECONNECT SERVICE INSTALL 250 VALVE
695 BERRY ST. RESIDENTIAL	-	-	-	-	-

* SERVICES TO BE RENEWED TO P/L ALL OTHERS TO BE RECONNECTED



NOTE: ALL GATE VALVES TO BE COUNTER-CLOCKWISE TO CLOSE (RED OPERATING NUT)



WARNING
 IF POWER EQUIPMENT OR EXPLOSIVES ARE TO BE USED FOR EXCAVATION ON THIS PROJECT THE CONTRACTOR MUST:
 1) NOTIFY THE GAS COMPANY OF THE PROPOSED LOCATION OF EXCAVATION.
 2) TAKE PRECAUTION TO AVOID DAMAGE TO GAS COMPANY INSTALLATIONS.
 SEE PROVINCIAL REGULATION 210/72 FOR DETAILS

LOCATION APPROVED UNDERGROUND STRUCTURES
 SUPV. U/G STRUCTURES COMMITTEE DATE
 NOTE:
 LOCATION OF UNDERGROUND STRUCTURES AS SHOWN ARE BASED ON THE BEST INFORMATION AVAILABLE BUT NO GUARANTEE IS GIVEN THAT ALL EXISTING UTILITIES ARE SHOWN OR THAT THE GIVEN LOCATIONS ARE EXACT. CONFIRMATION OF EXISTENCE AND EXACT LOCATION OF ALL UTILITIES MUST BE OBTAINED FROM THE INDIVIDUAL UTILITIES BEFORE PROCEEDING WITH CONSTRUCTION.

B.M. 38-15 ELEV. 235.131m	N.W. Cor. King Edward St. & Sargent Ave., Tbt. in S. Conc. foundation No. 1777, Sargent Ave., 20 m W. & 0.5 m A.G.L. of S.E. Cor. of Blk.		
0	ISSUED FOR TENDER	16/04/21	R.S.
NO.	REVISIONS	DATE	BY

DESIGNED BY J.H. CHECKED BY R.S.
 DRAWN BY J.H. APPROVED BY R.S.
 SCALE: HORIZONTAL 1:250 VERTICAL 1:50
 DATE 2016 04 21
 PLOT DATE: 2016 04 21

ENGINEER'S SEAL

 CONSULTANT DRAWING NUMBER C-211

THE CITY OF WINNIPEG
 WATER AND WASTE DEPARTMENT
 ENGINEERING DIVISION
 2016 WATERMAIN RENEWALS
 CONTRACT 6
 BERRY STREET
 92.4 SSL OF SARGENT AVENUE TO SARGENT AVENUE

SHEET 12 OF 14
 CITY DRAWING NUMBER D-14358