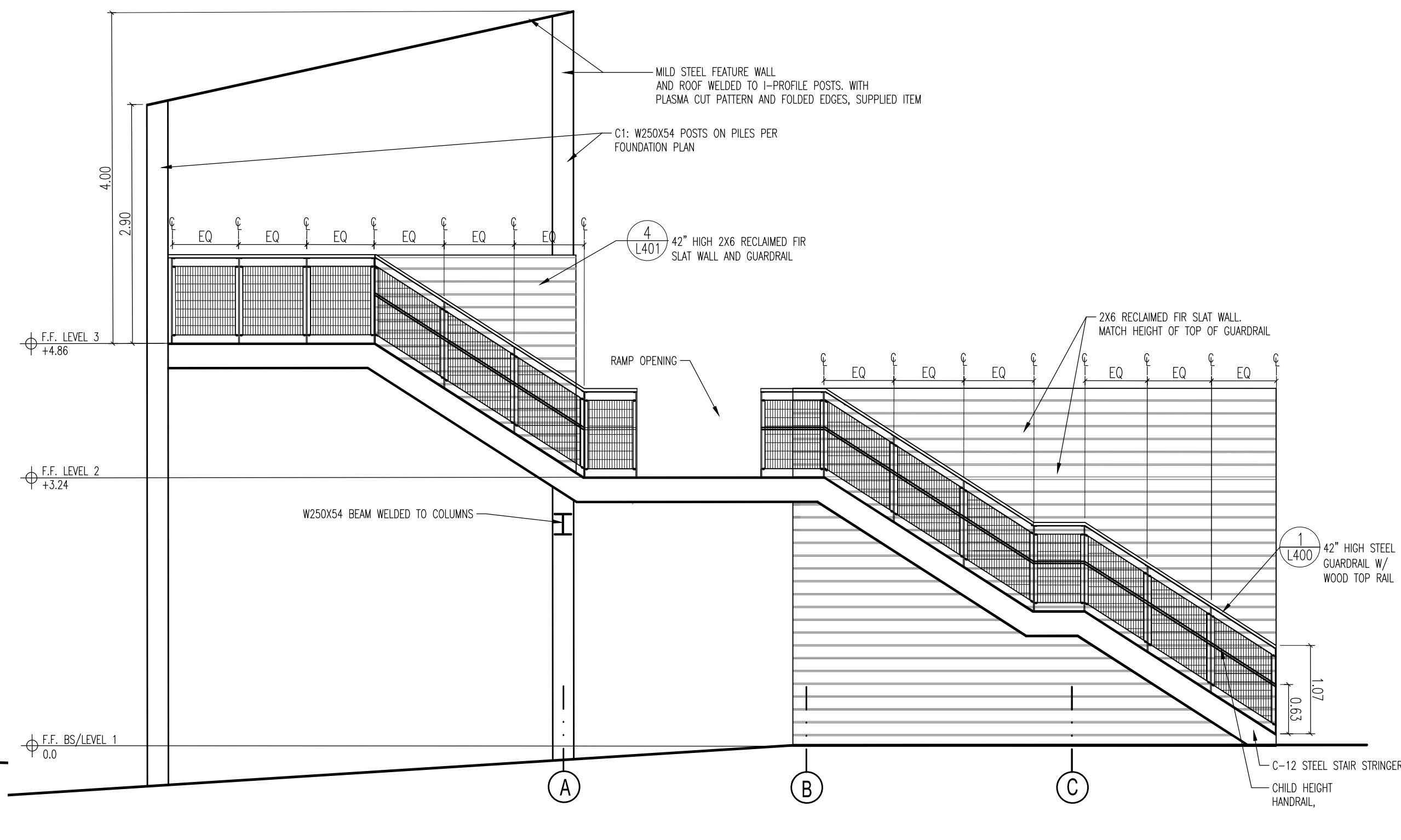
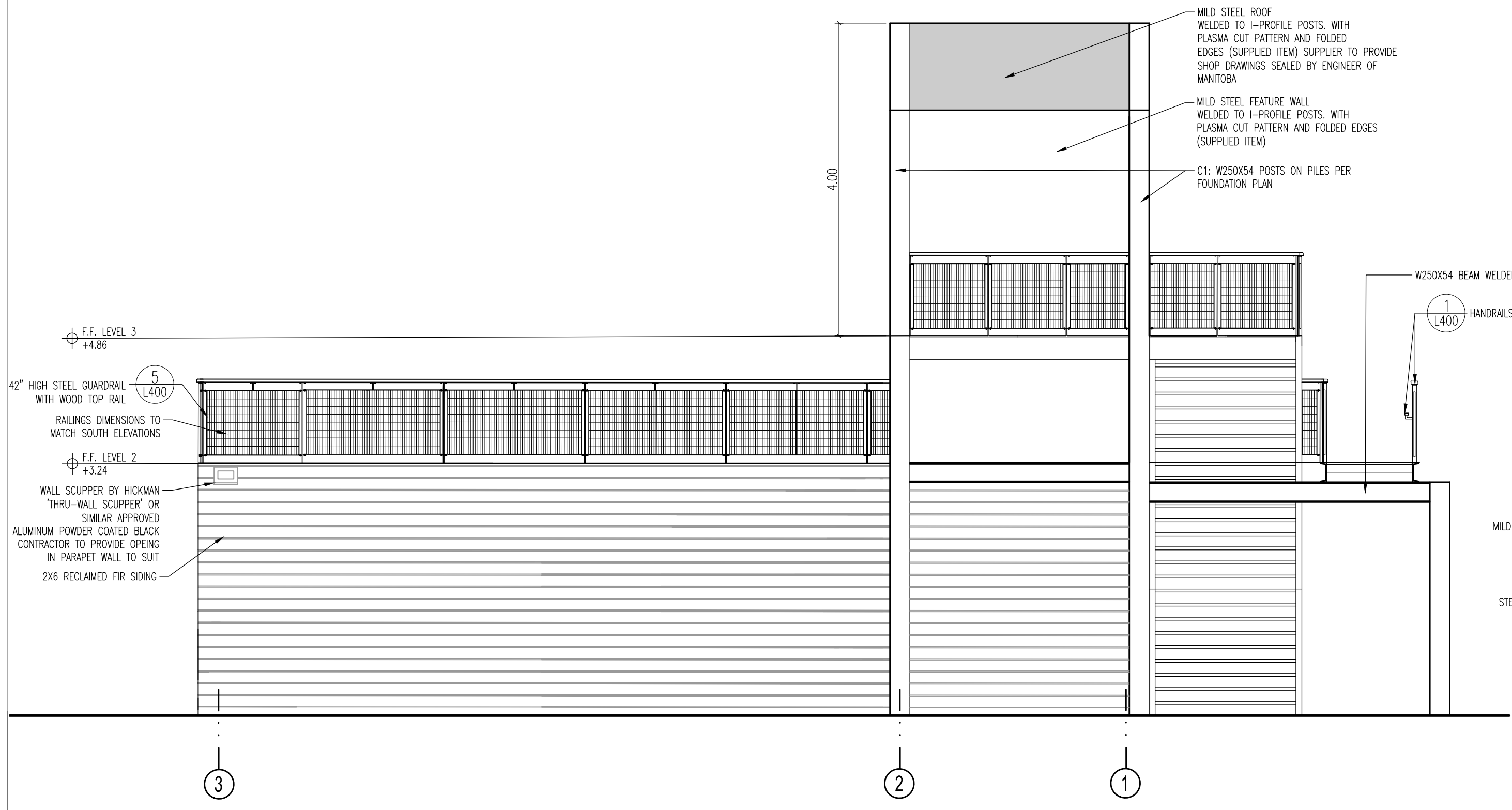


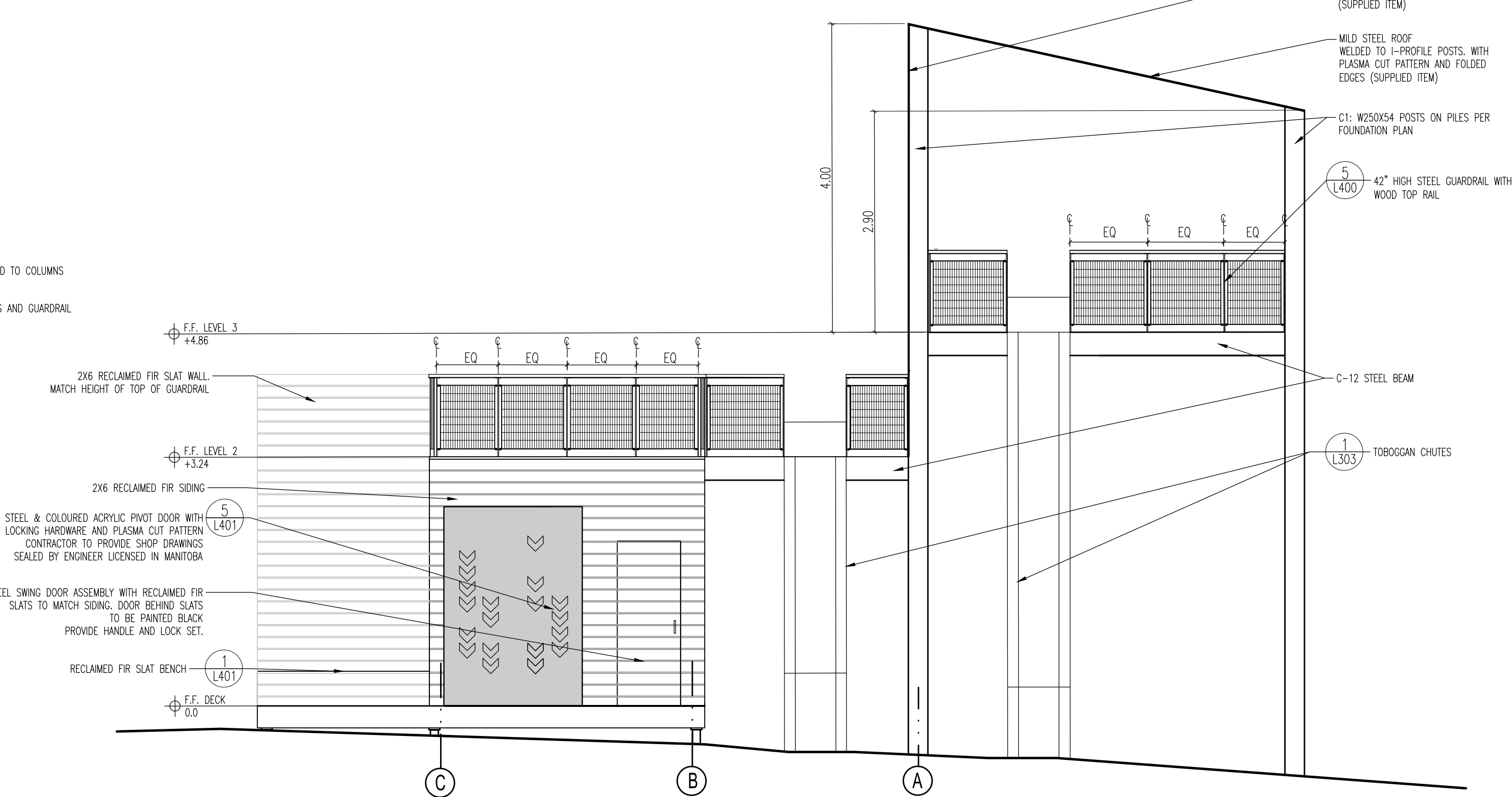
1 SOUTH ELEVATION
1:50 (at 24X36)



2 WEST ELEVATION
1:50 (at 24X36)



3 NORTH ELEVATION
1:50 (at 24X36)



4 EAST ELEVATION
1:50 (at 24X36)

5	YY.MM.DD	-
4	YY.MM.DD	-
3	YY.MM.DD	-
2	YY.MM.DD	-
1	16.04.15	- ISSUED FOR CONSTRUCTION
No.	DATE	REVISION / ISSUANCE



Consultant
PLAIN PROJECTS
LANDSCAPE ARCHITECTURE & ENVIRONMENTAL DESIGN
562 Academy Road / Winnipeg, MB / R3N 0E3
(204) 930 0272 / www.plainprojects.ca



Consultant
WOLFROM ENGINEERING LTD.
CONSULTING ENGINEERS 345 WOLFMAN AVENUE, WINNIPEG, CANADA R3L 0L5 PHONE: (204) 432-0041 FAX: (204) 284-8893



Client
Winnipeg
The City of Winnipeg
Planning, Property and Development Department
15-30 Fort Street, Winnipeg, MB R3C 4X5

Project
ST. VITAL PARK TOBOGGAN SLIDES & SHELTER

Sheet Title
ELEVATIONS

BID OPPORTUNITY
339-2016
Date
APRIL 2016

Sheet
L300