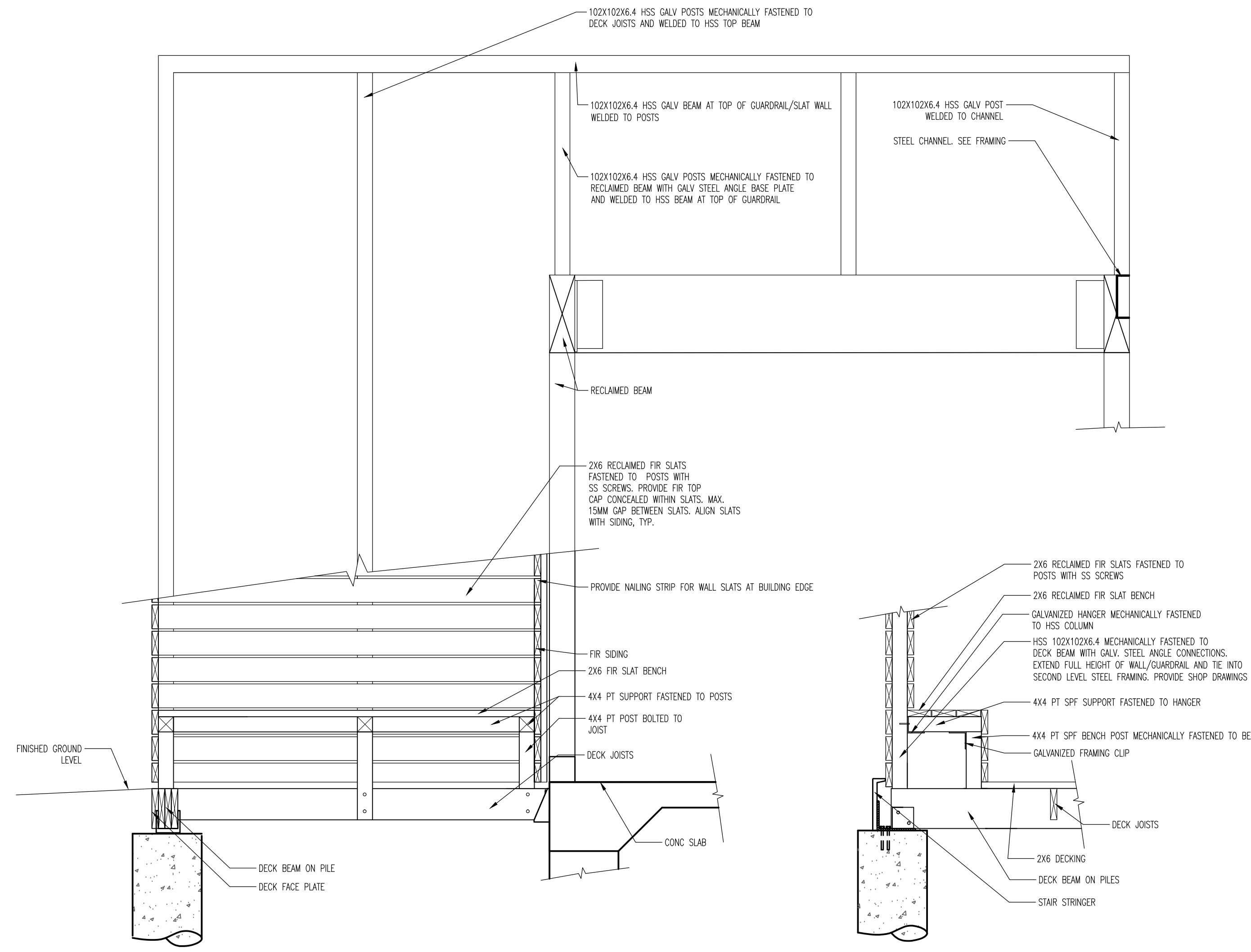
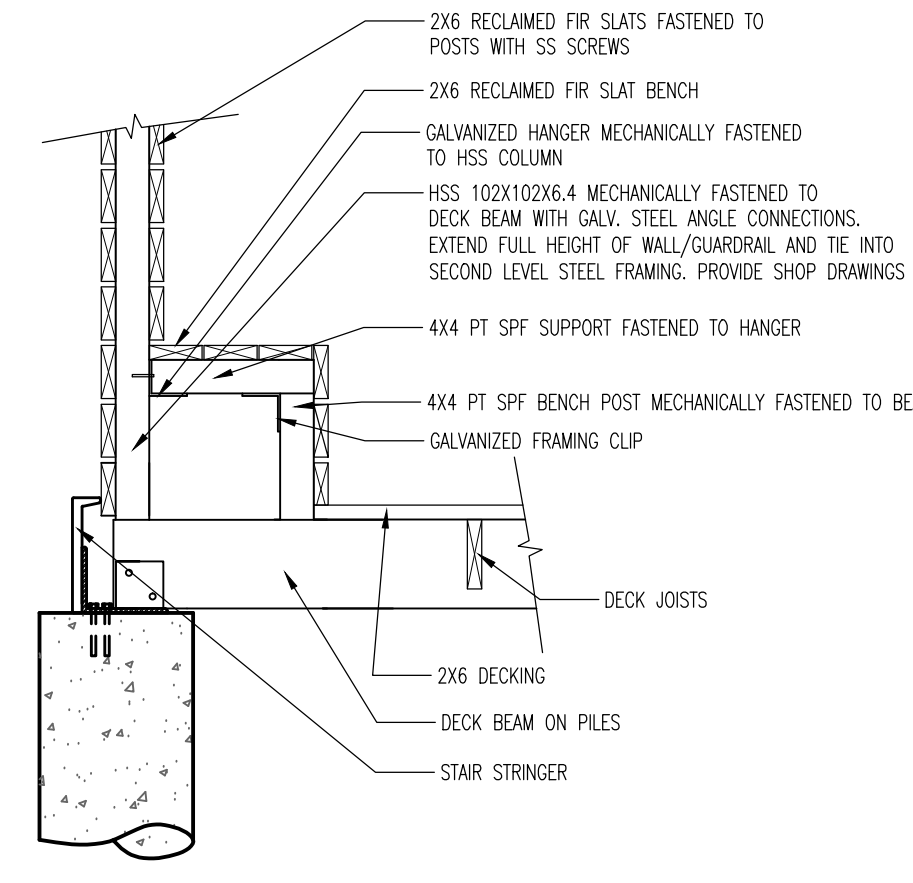


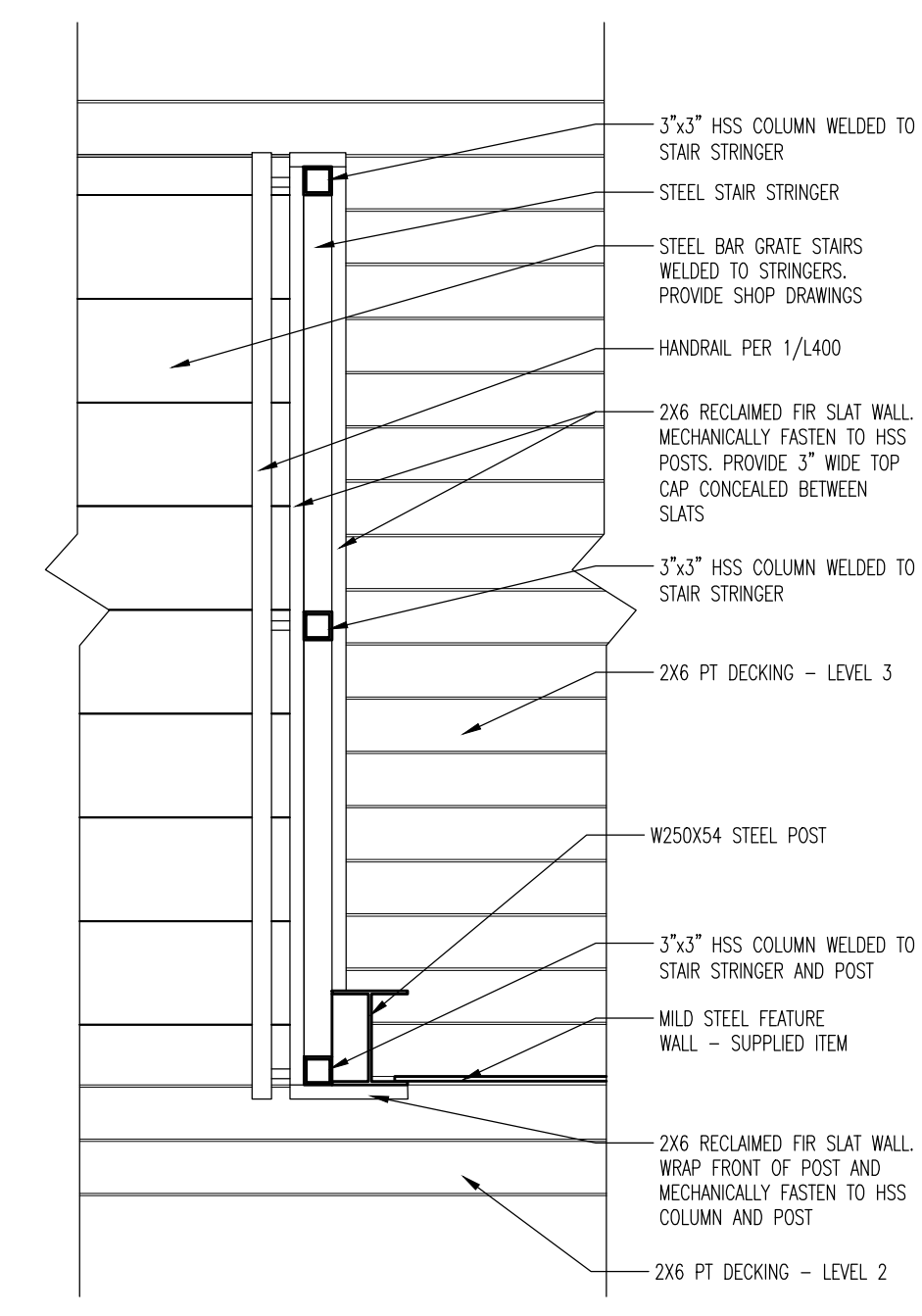
**1 WOOD SLAT WALL AND BENCH PLAN**  
1:20 (of 24X36)



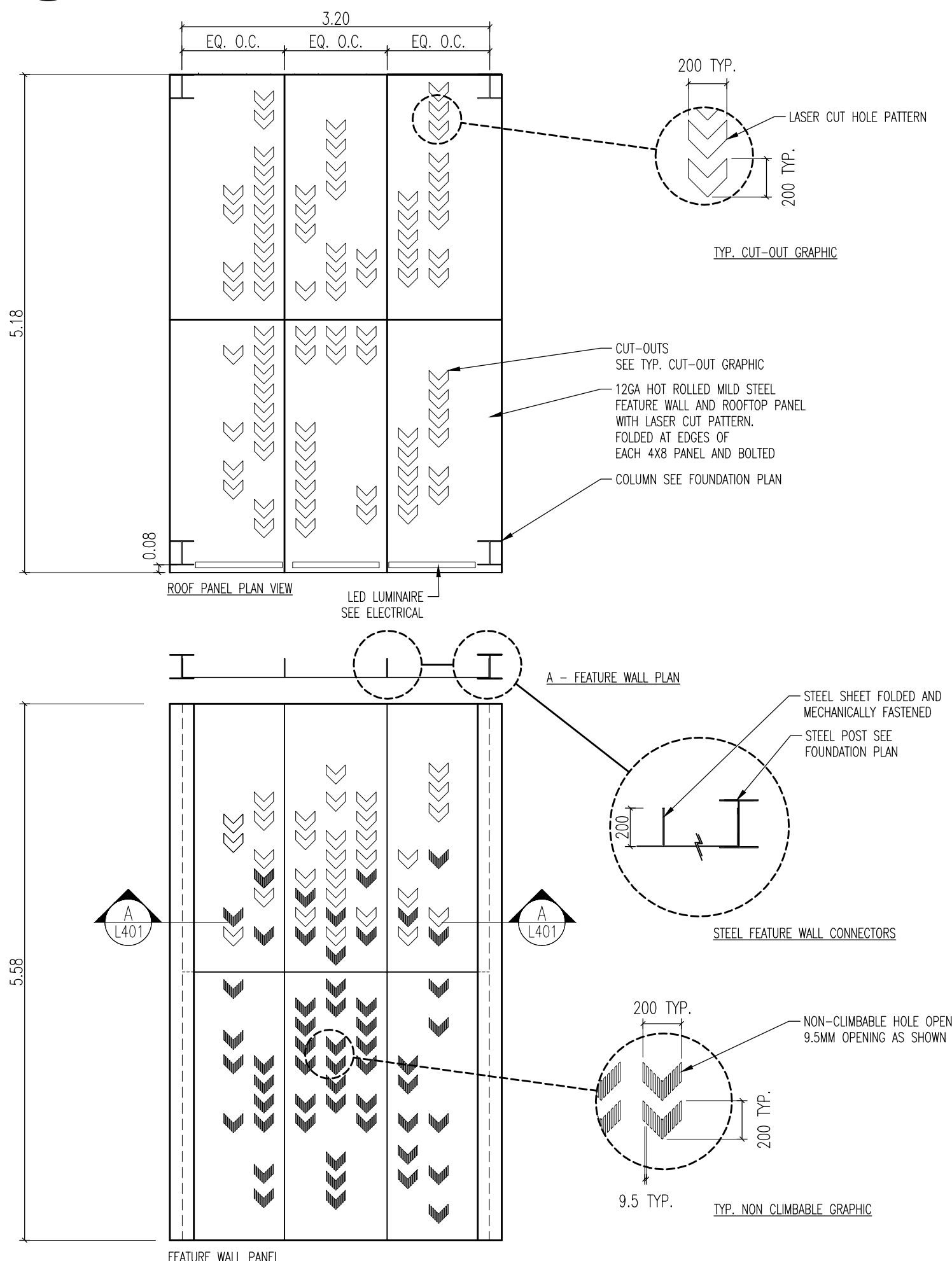
**2 SLAT WALL AND BENCH**  
1:20 (of 24X36)



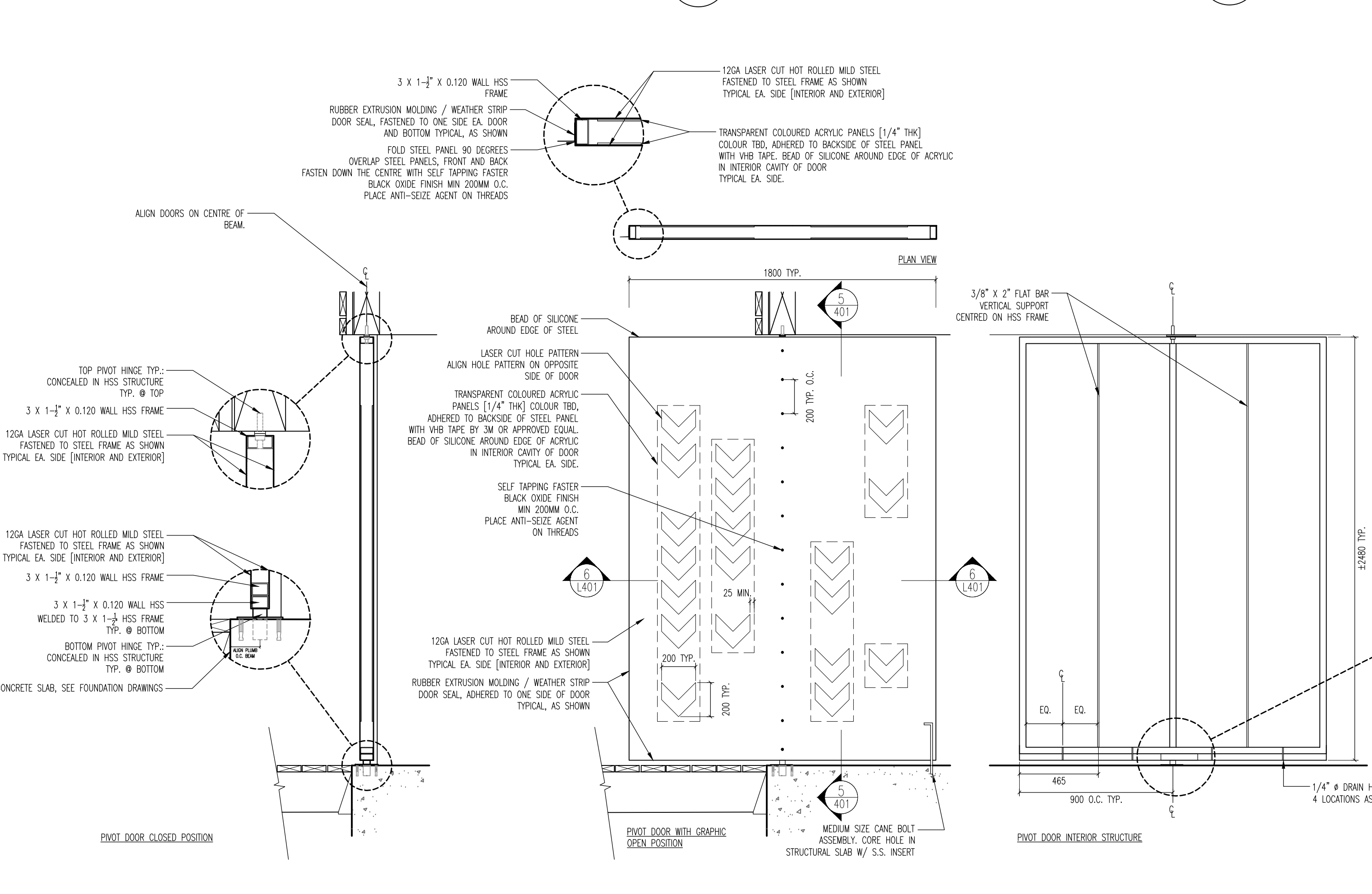
**3 SLAT WALL AND BENCH**  
1:20 (of 24X36)



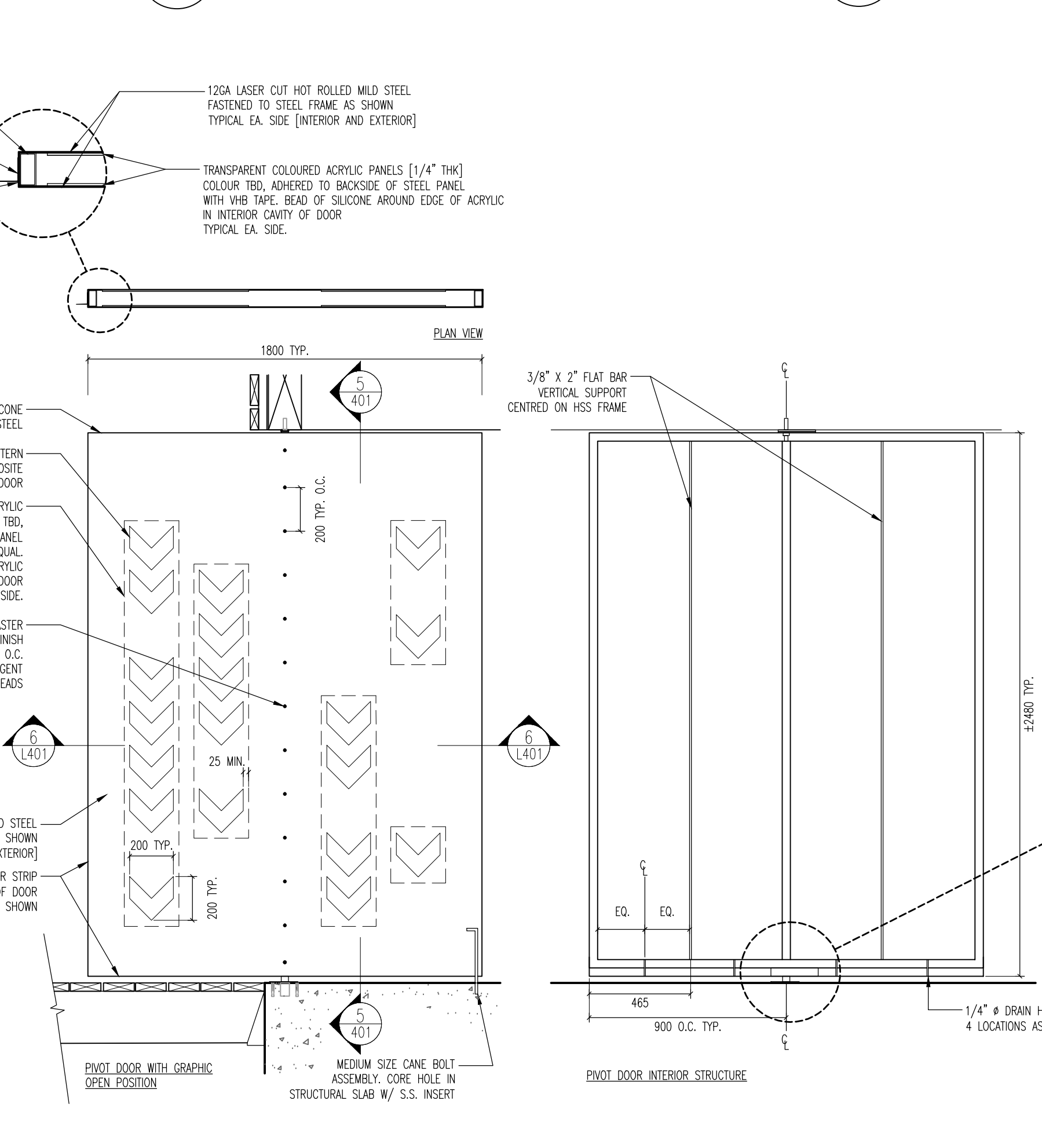
**4 UPPER LEVEL SLAT WALL DETAIL PLAN**  
1:20 (of 24X36)



**X FEATURE WALL AND ROOF - REFERENCE ONLY**  
1:50 (of 24X36)



**5 PIVOT DOORS SECTION, TYP.**  
1:20 (of 24X36)



**6 PIVOT DOORS PLAN, SECTION & ELEVATION, TYP.**  
1:20 (of 24X36)

**PIVOT DOOR NOTES:**

THE EXACT SIZE OF DOOR IS TO BE FIELD MEASURED ONCE STRUCTURE IS ERECTED.

THE DOORS ARE TO BE LOCKED IN A 90 DEGREE OPEN OR CLOSED POSITION VIA A 12\"/>

CONTRACTOR IS TO PROVIDE ENGINEERED SHIP DRAWINGS, BY AN ENGINEER LICENSED IN THE PROVINCE OF MANITOBA

EXTRUDED MOLDING SEAL AND WEATHER STRIP: 1 SHARP EXTRUSION PRODUCT # X2825 70 DURO SOLID EPDM RUBBER AVAILABLE THROUGH INDUSTRIAL RUBBER SUPPLY, WPG, MB, 204.694.4444, OR APPROVED EQUAL IN ACCORDANCE WITH B7 OF THE BID OPPORTUNITY. BOTTOM AND ONE SIDE EACH DOOR SHALL HAVE AN EXTRUDED RUBBER MOLDING SEAL ANGLE, FASTENED TO DOOR FRAME WITH SELF TAPPING SCREWS, BLACK OXIDE.

PIVOT HINGE: CENTER HINGE PIVOT SETS AVAILABLE THROUGH RIXON ASSA ABLOY, OR APPROVED EQUAL IN ACCORDANCE WITH B7 OF THE BID OPPORTUNITY. INSTALL PER MANUFACTURERS SPECIFICATION, BRONZE FINISH. BOTTOM CENTRE PIVOT PRODUCT # H117-3/4 x SPL0 3615 LESS TOP PIVOT AND TOP CENTRE PIVOT PRODUCT # H345.

TRANSPARENT COLOURED ACRYLIC PANELS: TRANSPARENT ACRYLIC [1/4\"/>

GRAPHIC: CONTRACT ADMINISTRATOR TO SUPPLY CONTRACTOR WITH GRAPHIC IN DXF. FORMAT FOR LASER CUTTING.

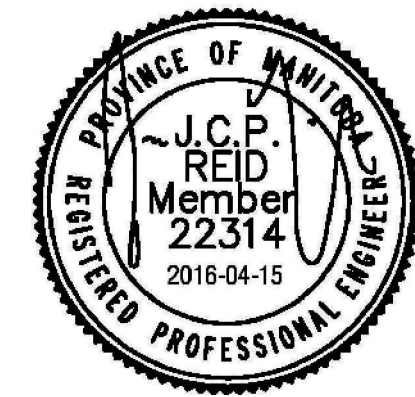
HSS: ALL HSS STEEL TO BE MILD STEEL UNLESS OTHERWISE STATED.

STEEL DOOR PANELS [FRONT / BACK]: ALL STEEL DOOR PANEL ARE TO BE 12GA HOT ROLLED SHEET STEEL.

5	YY.MM.DD	-
4	YY.MM.DD	-
3	YY.MM.DD	-
2	YY.MM.DD	-
1	16.04.15	- ISSUED FOR CONSTRUCTION
No.	DATE	REVISION / ISSUANCE



Consultant  
**PLAIN PROJECTS LANDSCAPE ARCHITECTURE & ENVIRONMENTAL DESIGN**  
562 Academy Road / Winnipeg, MB / R3N 0E3  
(204) 930 0272 / www.plainprojects.ca



Consultant  
**WOLFROM ENGINEERING LTD.**  
CONSULTING ENGINEERS 345 WYNDOLAN AVENUE, WINNIPEG, CANADA R3L 0L5 PHONE: (204) 432-0241 FAX: (204) 284-4889



Client  
**Winnipeg**  
The City of Winnipeg  
Planning, Property and Development Department  
15-30 Fort Street, Winnipeg, MB R3C 4X5

Project  
**ST. VITAL PARK TOBOGGAN SLIDES & SHELTER**

Sheet Title  
**DETAILS**

BID OPPORTUNITY # 339-2016  
Date APRIL 2016

Sheet  
**L401**