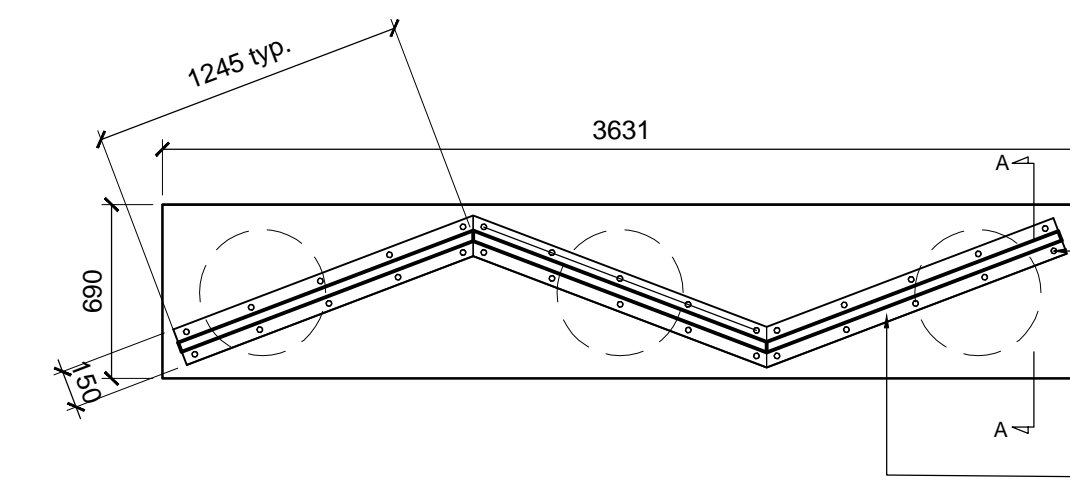
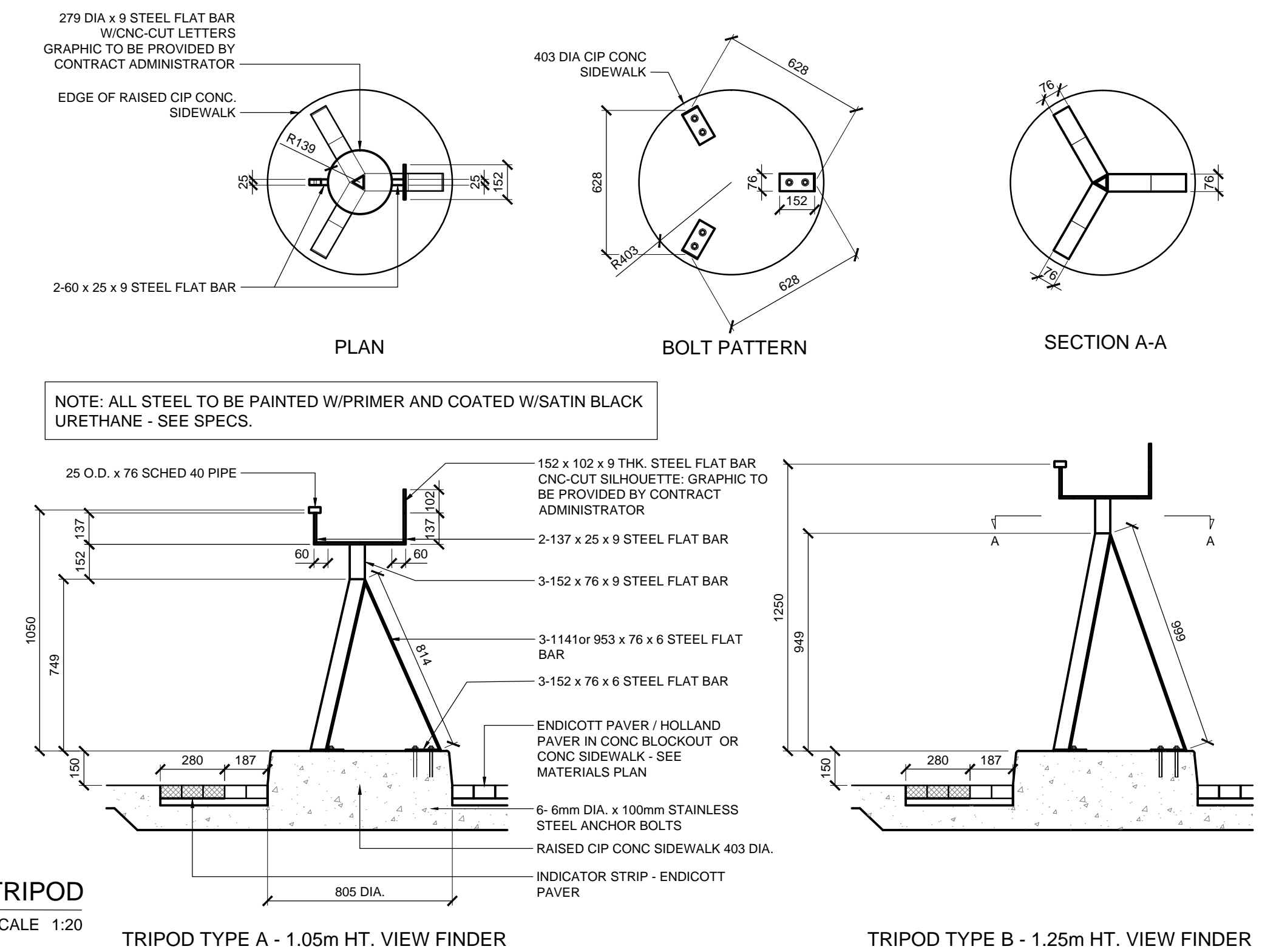


2 TREE COVER - RUPERT & ALEXANDER
L5.2 SCALE 1:20

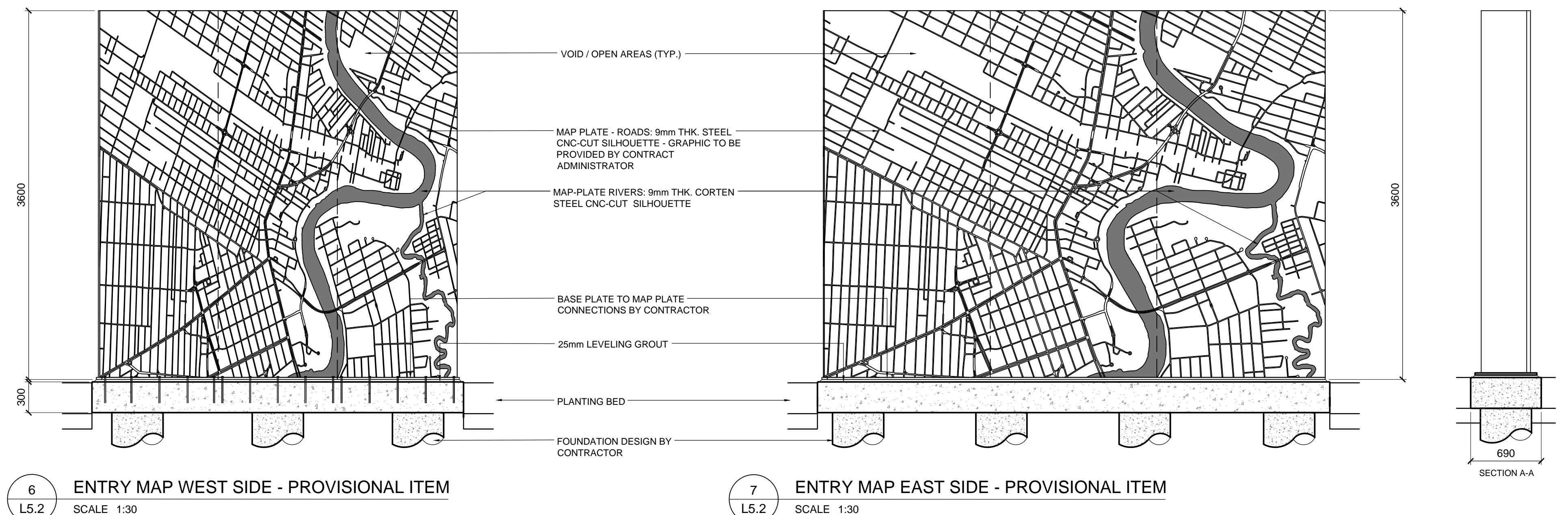





3
L5.2

TRIPOD
SCALE 1:20



7 ENTRY MAP EAST SIDE - PROVISIONAL ITEM
L5.2 SCALE 1:30



LOCATIONS APPROVED UNDERGROUND STRUCTURES		G.B.M. ELEV.		 HTFC PLANNING & DESIGN <small>300-225 Saskatchewan Avenue East, Winnipeg, MB R5B 0P5 PHONE: 204-544-0807 WEB: htfc.ca</small>		ENGINEER'S SEAL 		 THE CITY OF WINNIPEG PUBLIC WORKS DEPARTMENT ENGINEERING SERVICES DIVISION			
SIGNED BY: _____ SUPV U/G STRUCTURES _____ DATE _____				DESIGNED BY JH CHECKED BY GM DRAWN BY JH APPROVED BY GM		CONSULTANT ACAD DWG. NO. L5.2		CITY OF WINNIPEG CITY DRAWING NUMBER SHEET 26 OF 39			
LOCATION OF UNDERGROUND STRUCTURES AS SHOWN ARE BASED ON THE BEST INFORMATION AVAILABLE BUT NO GUARANTEE IS GIVEN THAT ALL EXISTING UTILITIES ARE SHOWN OR THAT THE GIVEN LOCATIONS ARE EXACT CONFIRMATION OF EXISTANCE AND EXACT LOCATION OF ALL SERVICES MUST BE OBTAINED FROM THE INDIVIDUAL UTILITIES BEFORE PROCEEDING		3 ISSUED FOR TENDER 05/25/16 JH 2 ISSUED FOR UG STRUCTURES REVIEW 04/08/16 JH 1 ISSUED FOR CITY OF WINNIPEG REVIEW 03/18/16 JH		HOR. SCALE AS NOTED VERTICAL AS NOTED		RELEASED FOR CONSTRUCTION DATE _____		METAL FABRICATION 2 DETAILS BID NO. 345-2016			
NO. REVISIONS		DATE BY		05/25/16							