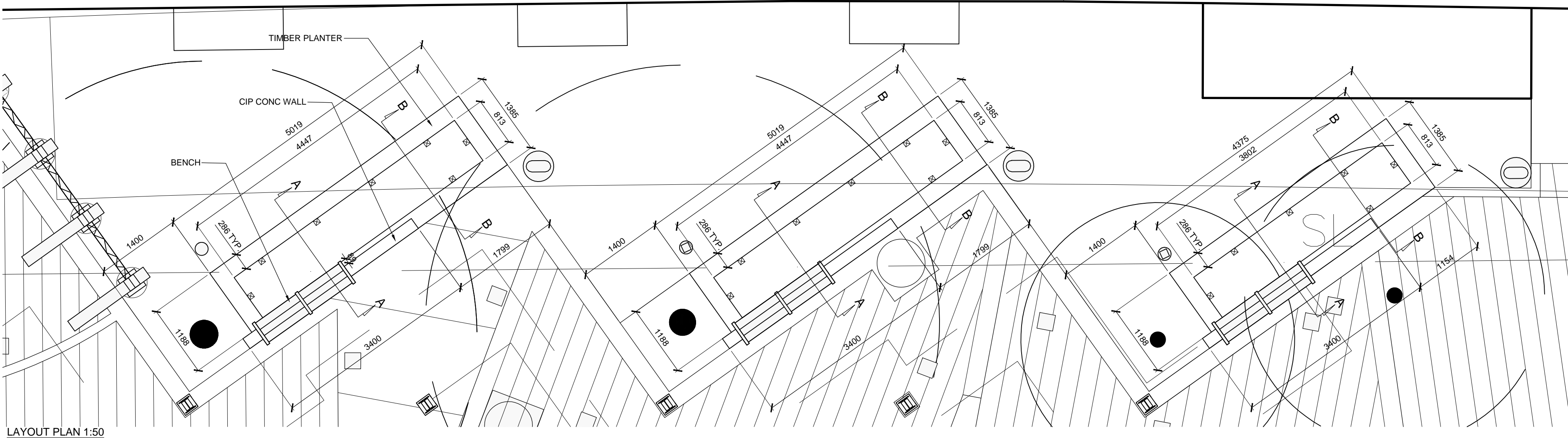


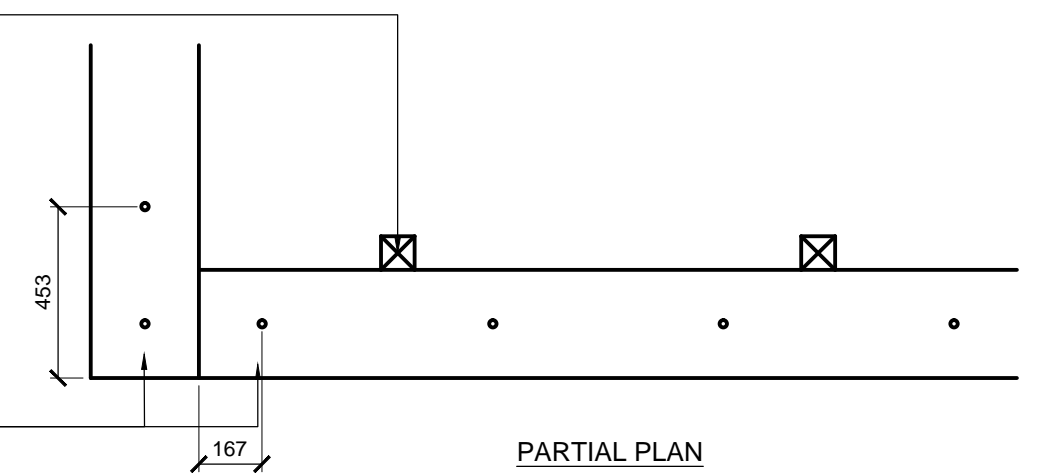
SECTION A-A

1 SINGLE GARBAGE BIN ENCLOSURE - PROVISIONAL ITEM
SCALE 1:25

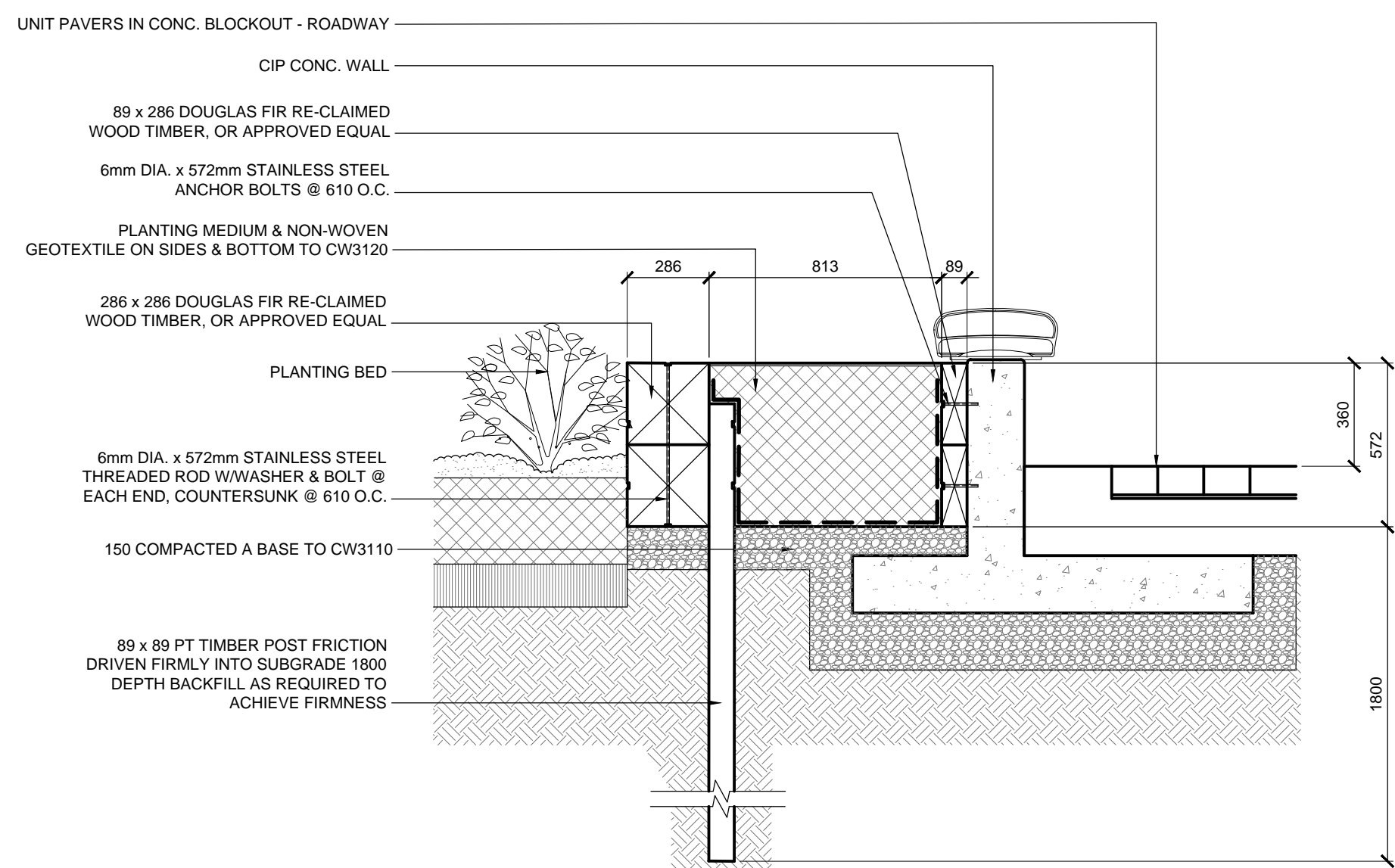


LAYOUT PLAN 1:50

89 x 89 PT TIMBER POST FRICTION
DRIVEN FIRMLY INTO SUBGRADE 1800
DEPTH BACKFILL AS REQUIRED TO
ACHIEVE FIRMINESS



PARTIAL PLAN



SECTION A-A 1:20

UNIT PAVERS IN CONC. BLOCKOUT - ROADWAY

286 x 286 DOUGLAS FIR RE-CLAIMED
WOOD TIMBER, OR APPROVED EQUAL

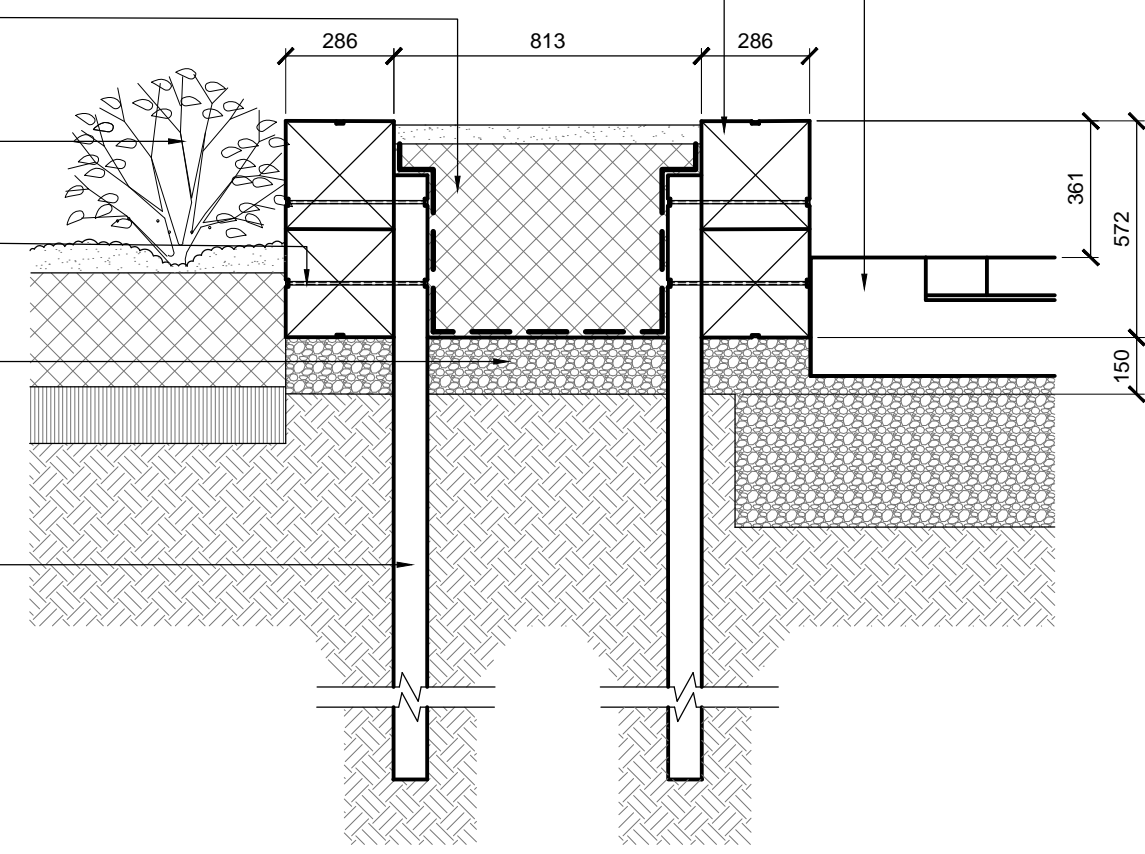
PLANTING MEDIUM & NON-WOVEN
GEOTEXTILE ON SIDES & BOTTOM TO
CW3120

6mm DIA. x 572mm STAINLESS STEEL
THREADED ROD WITH WASHER & BOLT @
EACH END, COUNTERSUNK @ 610 O.C.

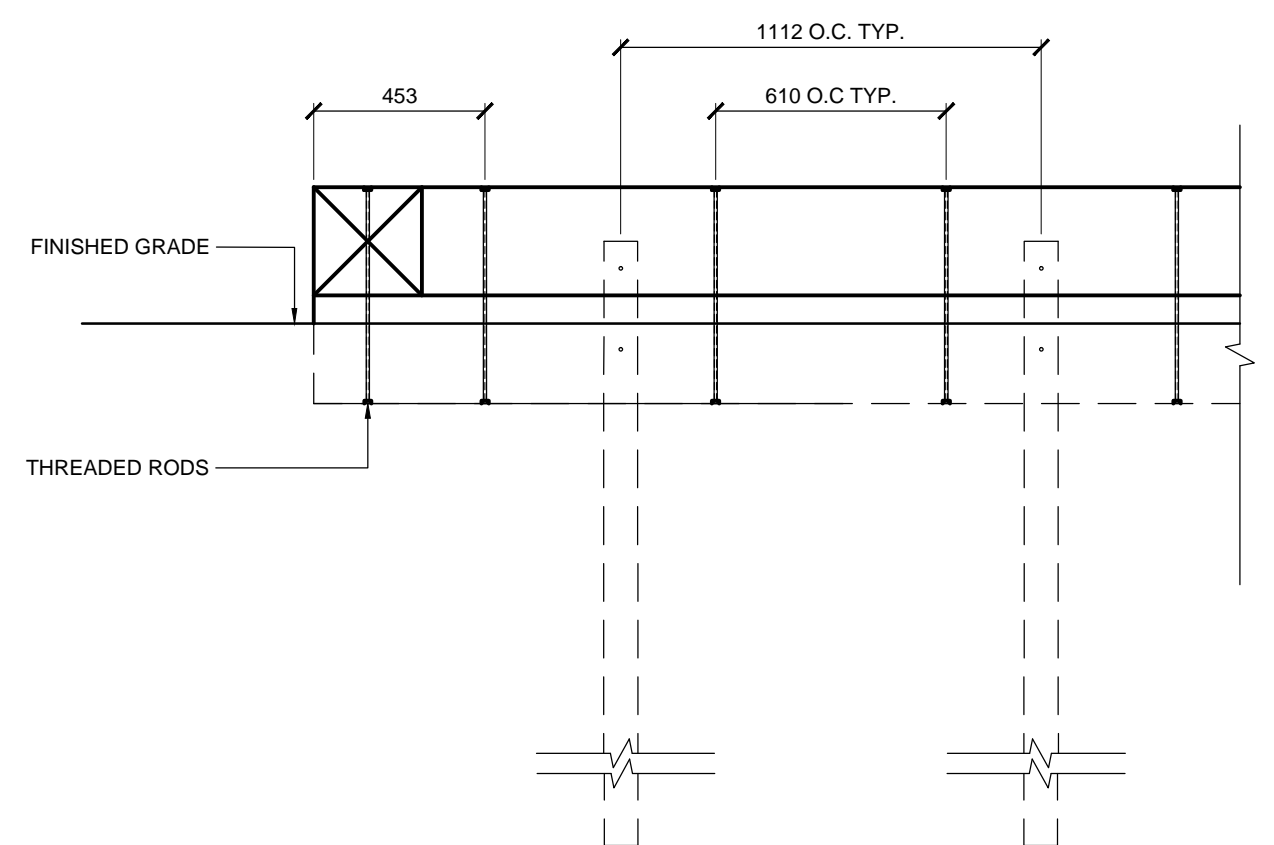
PLANTING BED

150 COMPACTED A BASE TO CW3110

89 x 89 PT TIMBER POST FRICTION
DRIVEN FIRMLY INTO SUBGRADE 1800
DEPTH BACKFILL AS REQUIRED TO
ACHIEVE FIRMINESS



SECTION B-B 1:20



ELEVATION - TYP. 1:20

NOTES:
These design documents are prepared solely for the use by the party with whom the design professional has entered into a contract and there are no representations of any kind, made by the design professional to any party with whom the design professional has not entered into a contract.

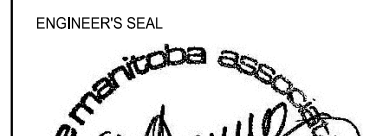
LOCATIONS APPROVED
UNDERGROUND STRUCTURES

SIGNED BY: _____ DATE: _____
SUPV. UG STRUCTURES

LOCATION OF UNDERGROUND STRUCTURES AS
SHOWN ARE BASED ON THE BEST INFORMATION
AVAILABLE BUT NO GUARANTEE IS GIVEN THAT ALL
EXISTING UTILITIES ARE SHOWN OR THAT THE GIVEN
LOCATIONS ARE EXACT CONFIRMATION OF
EXISTANCE AND EXACT LOCATION OF ALL SERVICES
MUST BE OBTAINED FROM THE INDIVIDUAL UTILITIES
BEFORE PROCEEDING

NO.	REVISIONS	DATE	BY
3	ISSUED FOR TENDER	05/25/16	JH
2	ISSUED FOR UG STRUCTURES REVIEW	04/08/16	JH
1	ISSUED FOR CITY OF WINNIPEG REVIEW	03/18/16	JH

DESIGNED BY	JH	CHECKED BY	GM
DRAWN BY	JH	APPROVED BY	GM
HOR. SCALE	AS NOTED	VERTICAL	AS NOTED
DATE	05/25/16	DATE	



CONSULTANT ACAD DWG. NO.
L6.1

THE CITY OF WINNIPEG
PUBLIC WORKS DEPARTMENT
ENGINEERING SERVICES DIVISION

CITY DRAWING NUMBER

SHEET 27 OF 39

BID NO.
345-2016

WOOD CARPENTRY 1
DETAILS