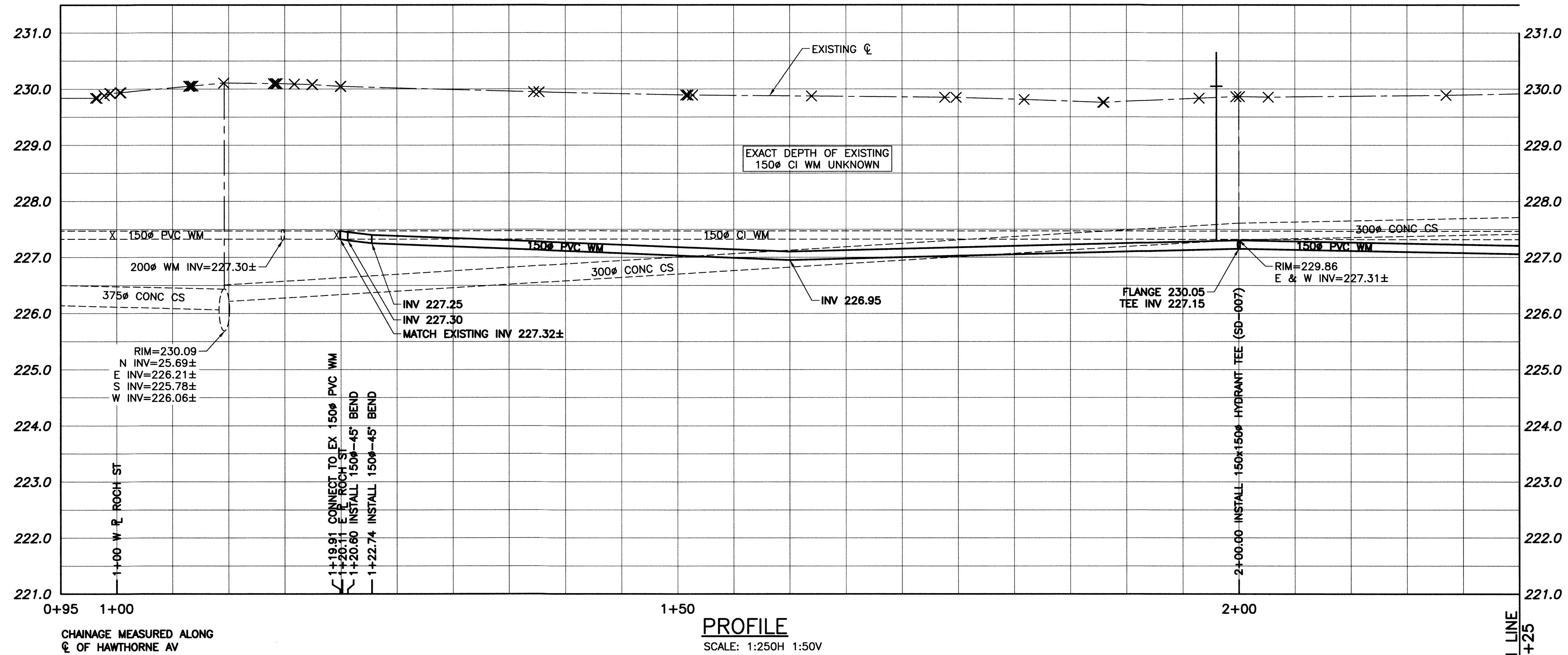
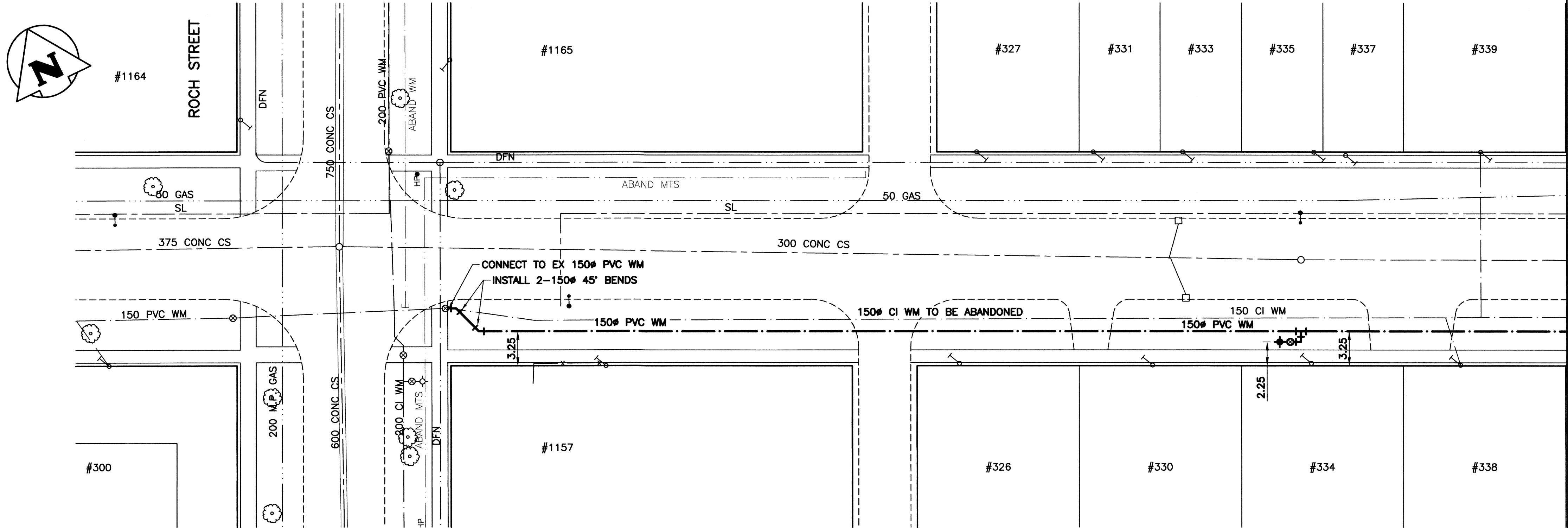


WATER SERVICE INFORMATION				
ADDRESS	SIZE & MATERIAL	CURB STOP MEASUREMENTS SHORT	LONG	CORP LOCATION
326 HAWTHORNE AVE		1.52 EWHL		
327 HAWTHORNE AVE		2.90 EWHL		
330 HAWTHORNE AVE		4.42 EWHL		
331 HAWTHORNE AVE		1.37 EWHL		
333 HAWTHORNE AVE		4.10 WEHL	5.40 WELL	
334 HAWTHORNE AVE		5.18 WEHL		
335 HAWTHORNE AVE		3.05 WEHL		
337 HAWTHORNE AVE		5.49 EWHL		
338 HAWTHORNE AVE	20 CU	4.40 EWHL	5.90 EWHL	
339 HAWTHORNE AVE	12 CU	4.90 WEHL	8.00 WELL	OPP CS



HAWTHORNE AVENUE



PLAN
SCALE: 1:250

- CONSTRUCTION NOTES:**
- INSTALL WATER MAIN BY TRENCHLESS METHODS.
 - ALL MATERIALS TO CONFORM TO THE CITY OF WINNIPEG STANDARD CONSTRUCTION SPECIFICATIONS.
 - MINIMUM COVER TO TOP OF PROPOSED WATER MAIN IS 2.5m FROM STREET CENTERLINE.
 - INSTALL ALL HYDRANTS WITH FLANGE ELEVATION 50mm TO 150mm ABOVE FINISHED GRADE.
 - REPLACE ALL EXISTING LEAD SERVICES FROM THE PROPOSED WATER MAIN TO PROPERTY LINE.
 - BACKFILL UNDER OR WITHIN 1.0m OF PAVEMENTS, (INCLUDING SIDEWALKS) IS CLASS 3 BACKFILL EXCEPT AS NOTED. BACKFILL IN BOULEVARDS IS CLASS 5 BACKFILL.
 - WATER VALVES ARE CLOCKWISE TO CLOSE (BLACK OPERATING NUT).

WARNING

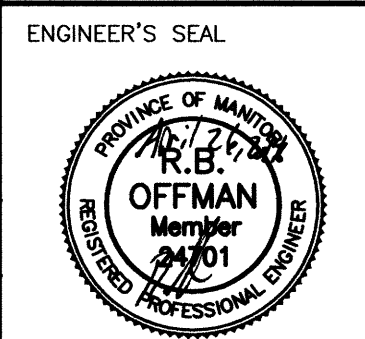
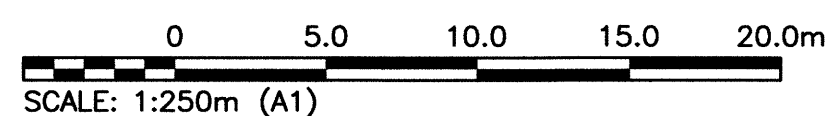
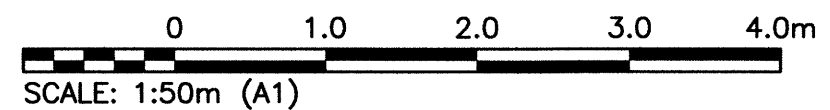
- NOTIFY THE GAS COMPANY OF THE PROPOSED LOCATION OF EXCAVATION.
- TAKE PRECAUTION TO AVOID DAMAGE TO GAS COMPANY INSTALLATIONS.
- SEE PROVINCIAL REGULATION 210/72 FOR DETAILS.

PROPERTY LIMITS DELINEATION

DELINEATION OF PROPERTY LIMITS AS SHOWN ON THIS DWG DOES NOT REPRESENT A "LEGAL SURVEY". KGS GROUP MAKES NO REPRESENTATION OR WARRANTY AS TO THE ACCURACY OF PROPERTY LIMITS DELINEATED ON THIS DWG, NOR ON THE DIMENSIONAL ACCURACY OF DWG FEATURES RELATIVE TO THOSE PROPERTY LIMITS.

METRIC

WHOLE NUMBERS INDICATE MILLIMETRES
DECIMALIZED NUMBERS INDICATE METRES



THE CITY OF WINNIPEG
WATER AND WASTE DEPARTMENT

PROJECT TITLE
2016 WATER MAIN RENEWALS CONTRACT 4

2016 HAWTHORNE AVENUE
ROCH STREET TO ROTHESAY STREET
ROCH STREET TO STA 2+25

SHEET OF
01 OF 14

COMPUTER FILE NAME
16-0107-002_CALL

CITY DRAWING NUMBER
D-14330

150 WM	WATER MAIN	150 WM	HYDRO	150 WM	WATER MAIN	150 WM	LOCATION APPROVED UNDERGROUND STRUCTURES	B.M. KGS BASE ELEV.	DWGS BASE ON C.S.R.S. NAD 83 SYSTEM UTM GRID.	DESIGNED BY	CHECKED BY	ENGINEER'S SEAL
⊕	HYDRANT	⊕	M.T.S.	⊕	HYDRANT, VALVE	⊕				MAT	B.M.	
⊙	VALVE	⊙	CONCRETE	⊙	LAND DRAINAGE SEWER	⊙				GEL	RBO	
⊖	LAND DRAINAGE SEWER	⊖	ASPHALT	⊖	WASTE WATER SEWER	⊖						
⊗	WASTE WATER SEWER	⊗	SIDEWALK	⊗	CENTRELINE	⊗						
○	MANHOLE	○	PLANNING	○	NORTH/WEST GUTTER	○						
□	CATCH BASIN	□	PROPERTY LINE	□	SOUTH/EAST GUTTER	□						
▽	CURB INLET	▽	SURVEY BAR	▽	N/W, S/E R'S	▽						
∩	BEND	∩	GAS	∩		∩						
∪	REDUCER	∪	CURB STOP	∪		∪						
∩	TEE	∩	TEE	∩		∩						
∩	LEGEND-PLAN	∩	LEGEND-PLAN	∩	LEGEND-PROFILE	∩						

File Name: U:\FMS\16-0107-002\16-0107-002_CALL.dwg - Tab: C01 Plotted By: gloewen 16/04/26 [Tue 10:24am]