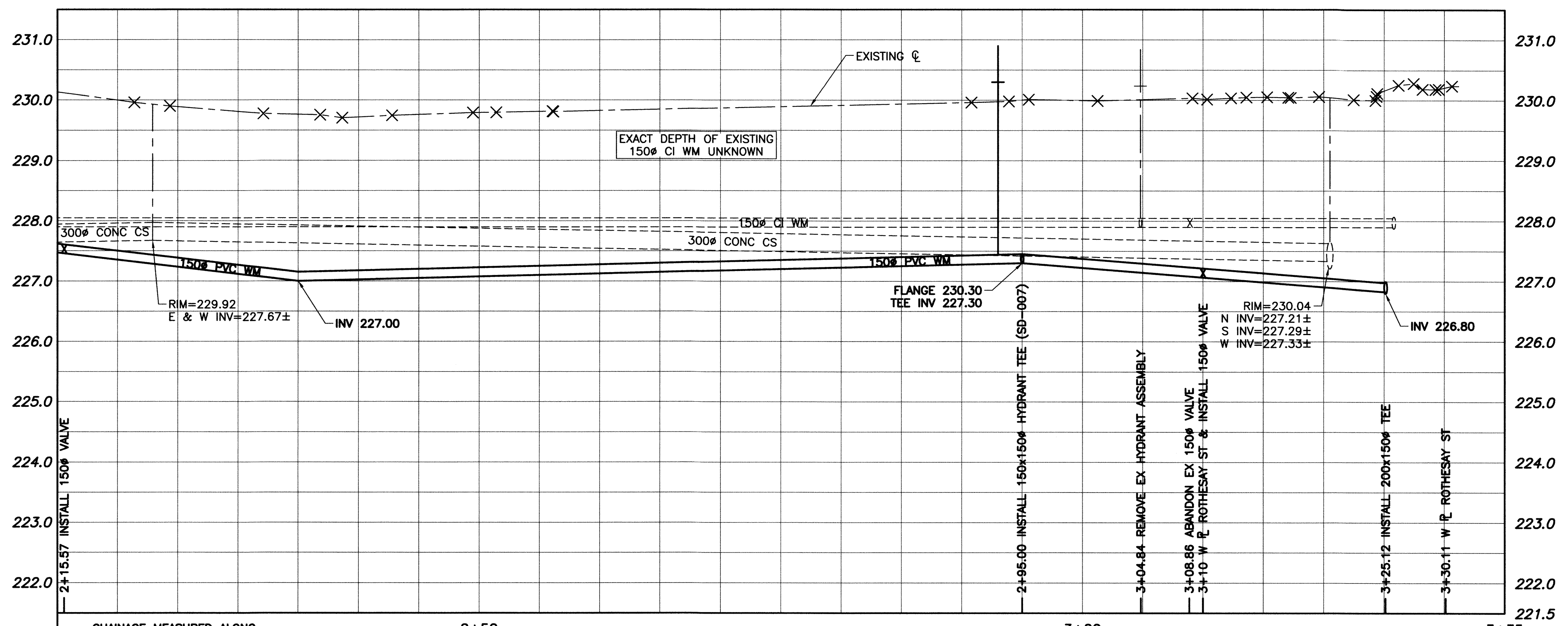


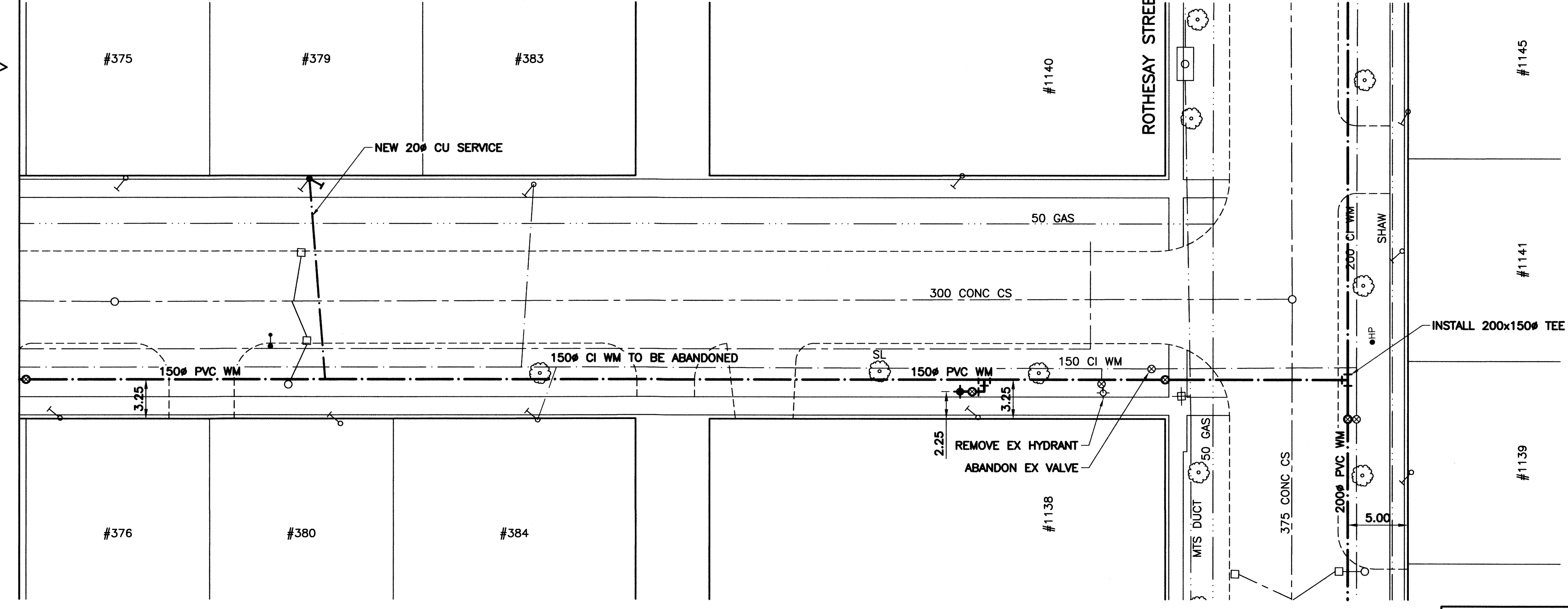
WATER SERVICE INFORMATION				
ADDRESS	SIZE & MATERIAL	CURB STOP MEASUREMENTS		CORP LOCATION
		SHORT	LONG	
375 CHERITON AVE		1.07 WEHL		
376 CHERITON AVE		2.29 EWHL		
379 CHERITON AVE		5.94 WEHL		
380 CHERITON AVE		2.13 WEHL		
383 CHERITON AVE	20 CU	4.57 EWHL		53.34 WWL ROCH ST
384 CHERITON AVE	20 CU	3.05 WEHL		2.44 WEHL



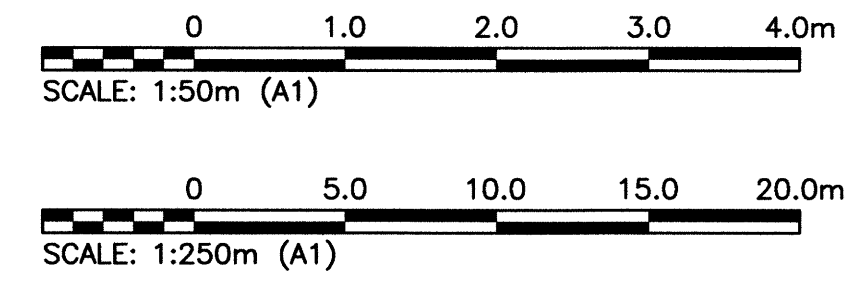
**PROFILE**  
SCALE: 1:250H 1:50V

- CONSTRUCTION NOTES:**
- INSTALL WATER MAIN BY TRENCHLESS METHODS.
  - ALL MATERIALS TO CONFORM TO THE CITY OF WINNIPEG STANDARD CONSTRUCTION SPECIFICATIONS.
  - MINIMUM COVER TO TOP OF PROPOSED WATER MAIN IS 2.5m FROM STREET CENTERLINE.
  - INSTALL ALL HYDRANTS WITH FLANGE ELEVATION 50mm TO 150mm ABOVE FINISHED GRADE.
  - REPLACE ALL EXISTING LEAD SERVICES FROM THE PROPOSED WATER MAIN TO PROPERTY LINE.
  - BACKFILL UNDER OR WITHIN 1.0m OF PAVEMENTS, (INCLUDING SIDEWALKS) IS CLASS 3 BACKFILL EXCEPT AS NOTED. BACKFILL IN BOULEVARDS IS CLASS 5 BACKFILL.
  - WATER VALVES ARE CLOCKWISE TO CLOSE (BLACK OPERATING NUT).

**CHERITON AVENUE**



**PLAN**  
SCALE: 1:250



**WARNING**

- NOTIFY THE GAS COMPANY OF THE PROPOSED LOCATION OF EXCAVATION.
- TAKE PRECAUTION TO AVOID DAMAGE TO GAS COMPANY INSTALLATIONS.
- SEE PROVINCIAL REGULATION 210/72 FOR DETAILS.

**PROPERTY LIMITS DELINEATION**

DELINEATION OF PROPERTY LIMITS AS SHOWN ON THIS DWG DOES NOT REPRESENT A "LEGAL SURVEY". KGS GROUP MAKES NO REPRESENTATION OR WARRANTY AS TO THE ACCURACY OF PROPERTY LIMITS DELINEATED ON THIS DWG, NOR ON THE DIMENSIONAL ACCURACY OF DWG FEATURES RELATIVE TO THOSE PROPERTY LIMITS.

**METRIC**

WHOLE NUMBERS INDICATE MILLIMETRES  
DECIMALIZED NUMBERS INDICATE METRES

File Name: U:\FMS\16-0107-002\16-0107-002\_CALL.dwg - Tab: C05 Plotted By: gloewen 16/04/26 [Tue 10:26am]

150 WM	WATER MAIN	150 WM	HYDRO	150 WM	WATER MAIN	150 WM
HYDRANT	HYDRANT	M.T.S.	CONCRETE	LAND DRAINAGE SEWER	LAND DRAINAGE SEWER	LAND DRAINAGE SEWER
VALVE	VALVE	CONCRETE	ASPHALT	WASTE WATER SEWER	WASTE WATER SEWER	WASTE WATER SEWER
300 LDS	LAND DRAINAGE SEWER	250 WWS	SIDWALK	CENTRELINE	CENTRELINE	CENTRELINE
250 WWS	WASTE WATER SEWER	250 WWS	PLANNING	NORTH/WEST GUTTER	NORTH/WEST GUTTER	NORTH/WEST GUTTER
MANHOLE	MANHOLE	PROPERTY LINE	SURVEY BAR	SOUTH/EAST GUTTER	SOUTH/EAST GUTTER	SOUTH/EAST GUTTER
CATCH BASIN	CATCH BASIN	GAS	CURB STOP	TEE	TEE	TEE
CURB INLET	CURB INLET	REDUCER	REDUCER	REDUCER	REDUCER	REDUCER
BEND	BEND	EXISTING	EXISTING	EXISTING	EXISTING	EXISTING
REDUCER	REDUCER	PROPOSED	PROPOSED	PROPOSED	PROPOSED	PROPOSED
EXISTING	LEGEND-PLAN	PROPOSED	LEGEND-PLAN	PROPOSED	LEGEND-PROFILE	PROPOSED

**LOCATION APPROVED UNDERGROUND STRUCTURES**

SUPV. U/G STRUCTURES COMMITTEE DATE

NOTE:  
LOCATION OF UNDERGROUND STRUCTURES AS SHOWN ARE BASED ON THE BEST INFORMATION AVAILABLE BUT NO GUARANTEE IS GIVEN THAT ALL EXISTING UTILITIES ARE SHOWN OR THAT THE GIVEN LOCATIONS ARE EXACT. CONFIRMATION OF EXISTENCE AND EXACT LOCATION OF ALL SERVICES MUST BE OBTAINED FROM THE INDIVIDUAL UTILITIES BEFORE PROCEEDING WITH CONSTRUCTION.

B.M. KGS BASE ELEV.	DWGS BASE ON C.S.R.S. NAD 83 SYSTEM UTM GRID.
ISSUED FOR CONSTRUCTION	16/04/27 RSD
NO. REVISIONS	DATE BY

**KGS GROUP CONSULTING ENGINEERS**

DESIGNED BY: MAT  
DRAWN BY: GEL  
HOR. SCALE: 1:250  
VERTICAL: 1:50

CHECKED BY: BMM  
APPROVED BY: RB6  
RELEASED FOR CONSTRUCTION  
DATE: 16/01/26

ENGINEER'S SEAL

PROVINCE OF MANITOBA  
R.B. OFFMAN  
Member  
27701

CONSULTANT DRAWING NO.  
16-0107-002\_C05

**THE CITY OF WINNIPEG WATER AND WASTE DEPARTMENT**

PROJECT TITLE  
**2016 WATER MAIN RENEWALS CONTRACT 4**

SHEET OF  
**05 OF 14**

COMPUTER FILE NAME  
16-0107-002\_CALL

CITY DRAWING NUMBER  
**D-14334**

CHERITON AVENUE  
MID BLOCK TIE-IN TO ROTHESAY STREET  
STA 2+15 TO ROTHESAY STREET