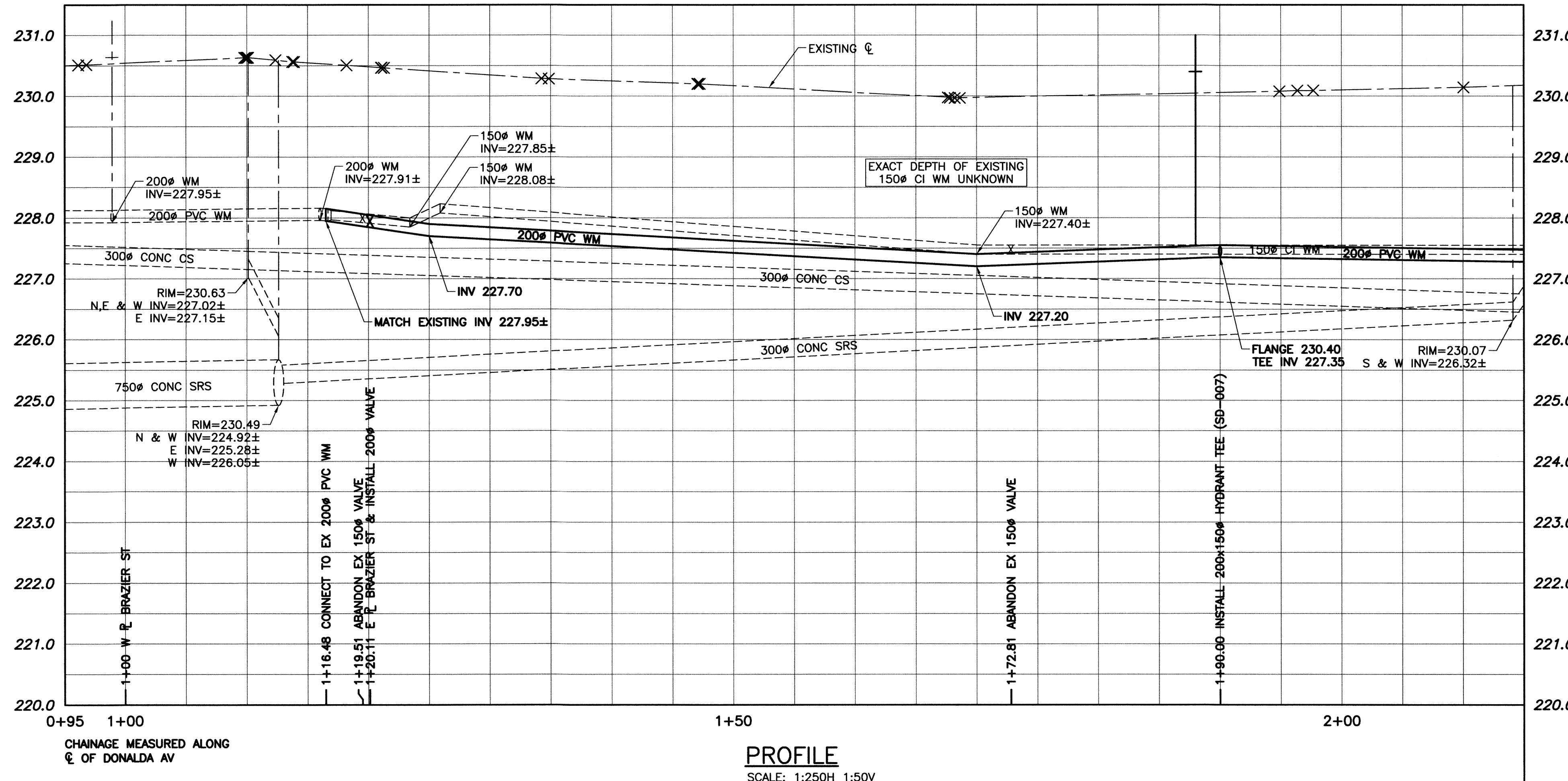
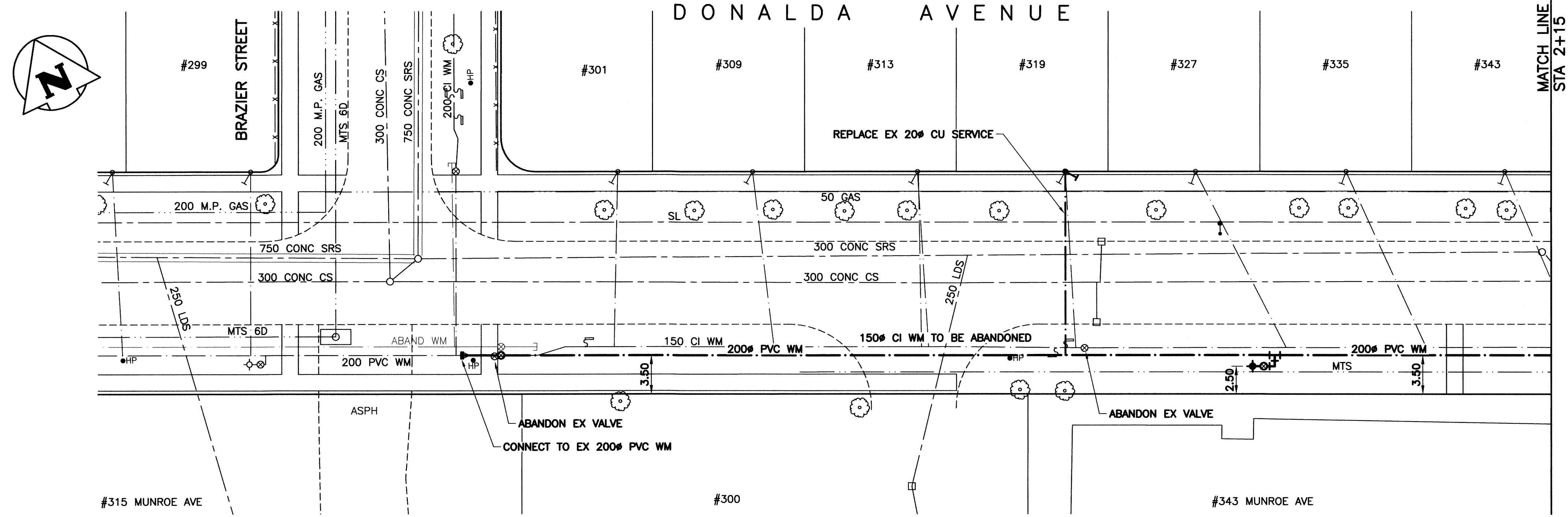


File Name: U:\FMS\16-0107-002\16-0107-002_CALL.dwg - Tab: C11 Plotted By: gloewen 16/04/26 [Tue 10:29am]

ADDRESS	SIZE & MATERIAL	CURB STOP MEASUREMENTS		CORP LOCATION
		SHORT	LONG	
301 DONALDA AVE	20 CU	2.14 WEHL		10.36 E OF HYD
309 DONALDA AVE	20 CU	4.69 WELL		24.78 E OF HYD
313 DONALDA AVE	20 CU	2.00 WEHL	3.50 WELL	1.00 E of CS
319 DONALDA AVE	16 CU	3.81 WELL		52.79 E OF HYD
327 DONALDA AVE	16 CU	8.08 EWLL		36.97 W OF HYD
335 DONALDA AVE	16 CU	7.77 EWLL		24.29 W OF HYD
343 DONALDA AVE	20 CU	7.80 EWLL	9.70 EWLL	



- CONSTRUCTION NOTES:**
1. INSTALL WATER MAIN BY TRENCHLESS METHODS.
 2. ALL MATERIALS TO CONFORM TO THE CITY OF WINNIPEG STANDARD CONSTRUCTION SPECIFICATIONS.
 3. MINIMUM COVER TO TOP OF PROPOSED WATER MAIN IS 2.5m FROM STREET CENTERLINE.
 4. INSTALL ALL HYDRANTS WITH FLANGE ELEVATION 50mm TO 150mm ABOVE FINISHED GRADE.
 5. REPLACE ALL EXISTING LEAD SERVICES FROM THE PROPOSED WATER MAIN TO PROPERTY LINE.
 6. BACKFILL UNDER OR WITHIN 1.0m OF PAVEMENTS, (INCLUDING SIDEWALKS) IS CLASS 3 BACKFILL EXCEPT AS NOTED. BACKFILL IN BOULEVARDS IS CLASS 5 BACKFILL.
 7. WATER VALVES ARE CLOCKWISE TO CLOSE (BLACK OPERATING NUT).



WARNING

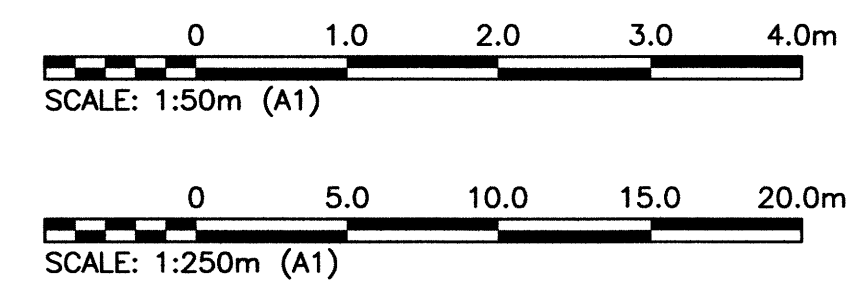
1. NOTIFY THE GAS COMPANY OF THE PROPOSED LOCATION OF EXCAVATION.
2. TAKE PRECAUTION TO AVOID DAMAGE TO GAS COMPANY INSTALLATIONS.
3. SEE PROVINCIAL REGULATION 210/72 FOR DETAILS.

PROPERTY LIMITS DELINEATION

DELINEATION OF PROPERTY LIMITS AS SHOWN ON THIS DWG DOES NOT REPRESENT A "LEGAL SURVEY". KGS GROUP MAKES NO REPRESENTATION OR WARRANTY AS TO THE ACCURACY OF PROPERTY LIMITS DELINEATED ON THIS DWG, NOR ON THE DIMENSIONAL ACCURACY OF DWG FEATURES RELATIVE TO THOSE PROPERTY LIMITS.

METRIC

WHOLE NUMBERS INDICATE MILLIMETRES
DECIMALIZED NUMBERS INDICATE METRES



APEGN
Certificate of Authorization
KGS Group
No. 245

150 WM	WATER MAIN	150 WM	HYDRO	150 WM	WATER MAIN	150 WM
Hydrant	HYDRANT	Hydrant	M.T.S.	Hydrant	HYDRANT, VALVE	Hydrant
Valve	VALVE	Valve	CONCRETE	Valve	LAND DRAINAGE SEWER	Valve
300 LDS	LAND DRAINAGE SEWER	300 LDS	ASPHALT	300 LDS	WASTE WATER SEWER	300 LDS
250 WWS	WASTE WATER SEWER	250 WWS	SIDEWALK	250 WWS	CENTRELINE	250 WWS
Manhole	MANHOLE	Manhole	PLANNING	Manhole	NORTH/WEST GUTTER	Manhole
Catch Basin	CATCH BASIN	Catch Basin	PROPERTY LINE	Catch Basin	SOUTH/EAST GUTTER	Catch Basin
Curb Inlet	CURB INLET	Curb Inlet	SURVEY BAR	Curb Inlet	N/W, S/E R'S	Curb Inlet
Bend	BEND	Bend	GAS	Bend		Bend
Reducer	REDUCER	Reducer	CURB STOP	Reducer		Reducer
TEE	TEE	TEE	TEE	TEE		TEE
EXISTING	LEGEND-PLAN	PROPOSED	EXISTING	PROPOSED	EXISTING	PROPOSED

LOCATION APPROVED UNDERGROUND STRUCTURES

SUPV. U/G STRUCTURES COMMITTEE DATE

NOTE:
LOCATION OF UNDERGROUND STRUCTURES AS SHOWN ARE BASED ON THE BEST INFORMATION AVAILABLE BUT NO GUARANTEE IS GIVEN THAT ALL EXISTING UTILITIES ARE SHOWN OR THAT THE GIVEN LOCATIONS ARE EXACT. CONFIRMATION OF EXISTENCE AND EXACT LOCATION OF ALL SERVICES MUST BE OBTAINED FROM THE INDIVIDUAL UTILITIES BEFORE PROCEEDING WITH CONSTRUCTION.

B.M. KGS BASE ELEV.	DWGS BASE ON C.S.R.S. NAD 83 SYSTEM UTM GRID.
ISSUED FOR CONSTRUCTION	16/04/27 RBO
NO. REVISIONS	DATE BY

DESIGNED BY	MAT	CHECKED BY	BY
DRAWN BY	GEL	APPROVED BY	RBO
HOR. SCALE:	1:250	RELEASED FOR CONSTRUCTION:	
VERTICAL:	1:50	DATE	16/01/26

ENGINEER'S SEAL

R.B. OFFMAN
Professional Engineer

THE CITY OF WINNIPEG
WATER AND WASTE DEPARTMENT

PROJECT TITLE: **2016 WATER MAIN RENEWALS CONTRACT 4**

LOCATION: **DONALDA AVENUE BRAZIER STREET TO ROCH STREET BRAZIER STREET TO STA 2+15**

SHEET OF: **11 OF 14**

COMPUTER FILE NAME: **16-0107-002_CALL**

CITY DRAWING NUMBER: **D-14340**

CONSULTANT DRAWING NO.: **16-0107-002_C11**