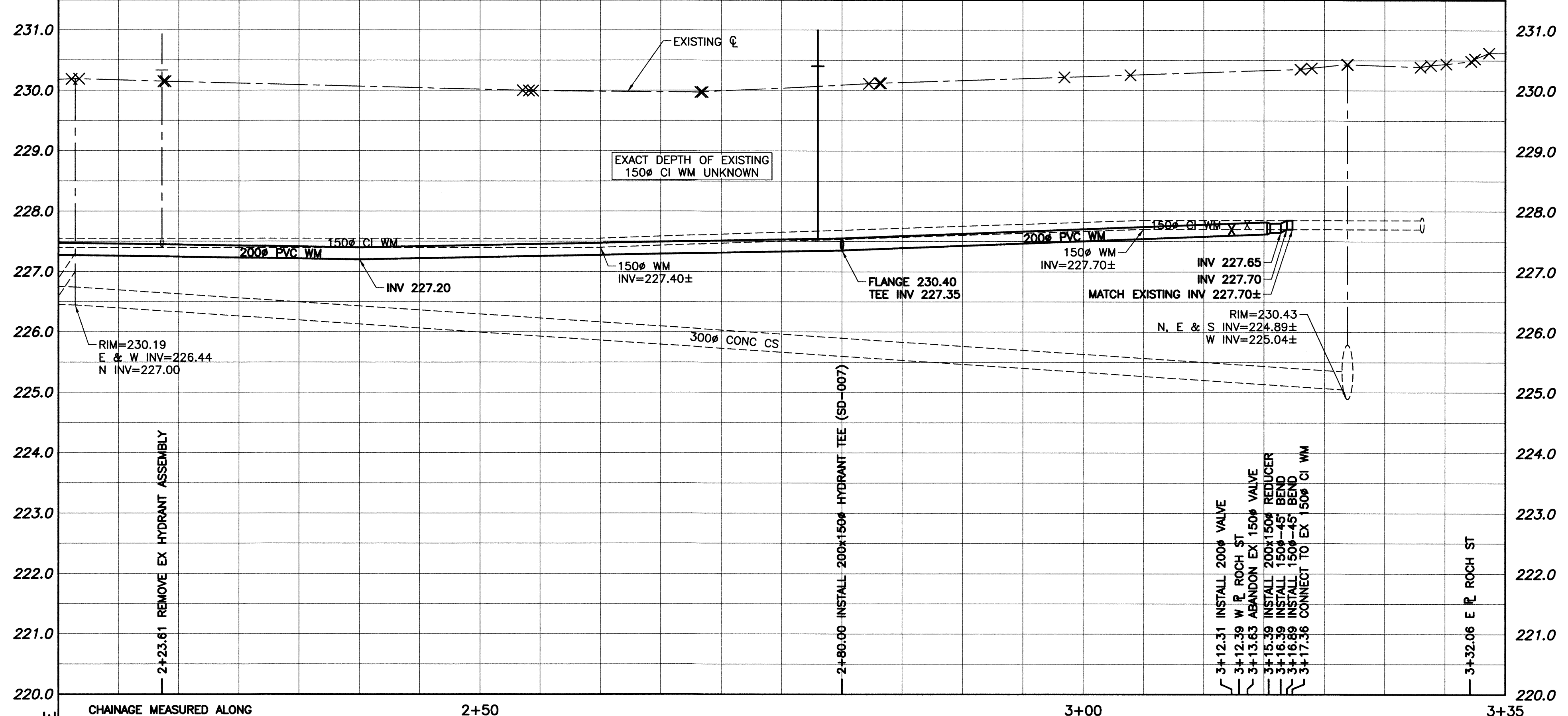


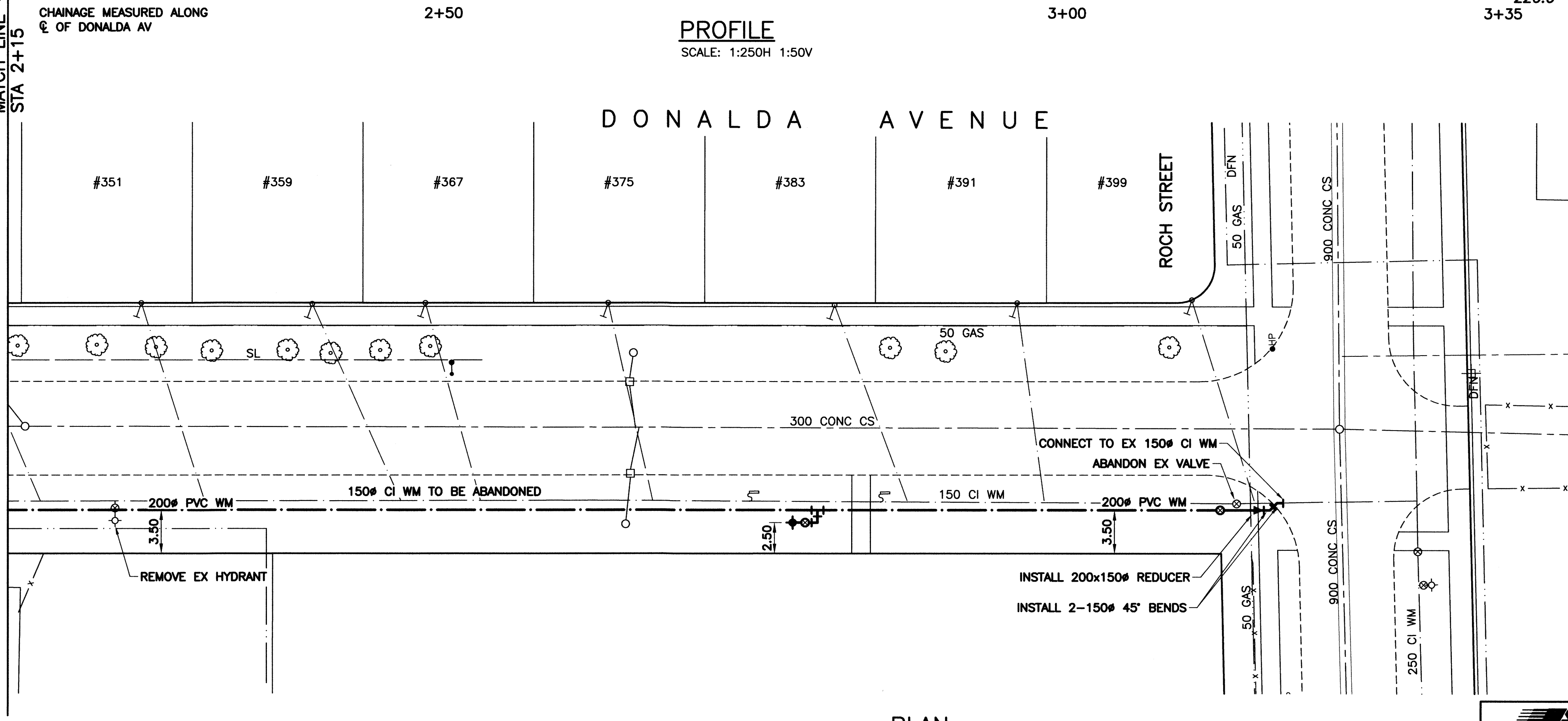
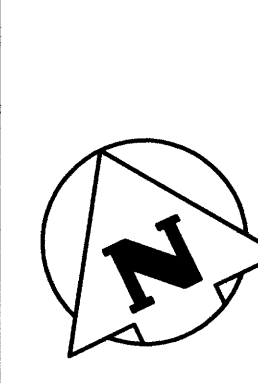
File Name: U:\FMS\16-0107-002\16-0107-002_CALL.dwg - Tab: C12 Plotted By: gloewen 16/04/26 [Tue 10:29am]

WATER SERVICE INFORMATION					
ADDRESS	SIZE & MATERIAL	CURB STOP MEASUREMENTS		CORP LOCATION	
		SHORT	LONG		
351 DONALDA AVE	20 CU	9.63 EWLL		2.83 E OF HYD	
359 DONALDA AVE	20 CU	3.66 WELL		18.59 E OF HYD	
367 DONALDA AVE	20 CU	5.03 EWLL		24.99 E OF HYD	
375 DONALDA AVE	20 CU	6.10 EWLL		38.83 E OF HYD	
383 DONALDA AVE	CU	10.97 EWLL		59.22 E OF HYD	
391 DONALDA AVE	20 CU	0.76 WEHL		2.13 E OF CS	
399 DONALDA AVE	20 CU	1.83 WEHL			

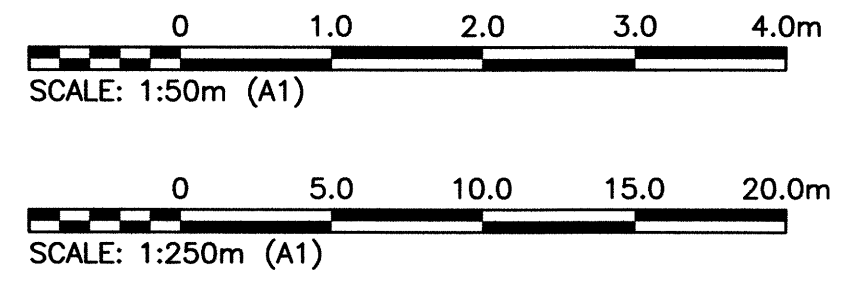


PROFILE
SCALE: 1:250H 1:50V

- CONSTRUCTION NOTES:**
- INSTALL WATER MAIN BY TRENCHLESS METHODS.
 - ALL MATERIALS TO CONFORM TO THE CITY OF WINNIPEG STANDARD CONSTRUCTION SPECIFICATIONS.
 - MINIMUM COVER TO TOP OF PROPOSED WATER MAIN IS 2.5m FROM STREET CENTERLINE.
 - INSTALL ALL HYDRANTS WITH FLANGE ELEVATION 50mm TO 150mm ABOVE FINISHED GRADE.
 - REPLACE ALL EXISTING LEAD SERVICES FROM THE PROPOSED WATER MAIN TO PROPERTY LINE.
 - BACKFILL UNDER OR WITHIN 1.0m OF PAVEMENTS, (INCLUDING SIDEWALKS) IS CLASS 3 BACKFILL EXCEPT AS NOTED. BACKFILL IN BOULEVARDS IS CLASS 5 BACKFILL.
 - WATER VALVES ARE CLOCKWISE TO CLOSE (BLACK OPERATING NUT).



PLAN
SCALE: 1:250



WARNING

- NOTIFY THE GAS COMPANY OF THE PROPOSED LOCATION OF EXCAVATION.
- TAKE PRECAUTION TO AVOID DAMAGE TO GAS COMPANY INSTALLATIONS.
- SEE PROVINCIAL REGULATION 210/72 FOR DETAILS.

PROPERTY LIMITS DELINEATION

DELINEATION OF PROPERTY LIMITS AS SHOWN ON THIS DWG DOES NOT REPRESENT A "LEGAL SURVEY". KGS GROUP MAKES NO REPRESENTATION OR WARRANTY AS TO THE ACCURACY OF PROPERTY LIMITS DELINEATED ON THIS DWG, NOR ON THE DIMENSIONAL ACCURACY OF DWG FEATURES RELATIVE TO THOSE PROPERTY LIMITS.

METRIC

WHOLE NUMBERS INDICATE MILLIMETRES
DECIMALIZED NUMBERS INDICATE METRES

APEGN
Certificate of Authorization
KGS Group
No. 245

EXISTING	LEGEND-PLAN	PROPOSED	EXISTING	LEGEND-PLAN	PROPOSED	EXISTING	LEGEND-PROFILE	PROPOSED
150 WM	WATER MAIN	150 WM	HYDRANT	HYDRO	150 WM	WATER MAIN	150 WM	WATER MAIN
○	HYDRANT	+	○	M.T.S.	+	HYDRANT, VALVE	+	HYDRANT, VALVE
⊗	VALVE	⊗	— — — — —	CONCRETE	— — — — —	LAND DRAINAGE SEWER	— — — — —	LAND DRAINAGE SEWER
— — — — —	LAND DRAINAGE SEWER	— — — — —	— — — — —	ASPHALT	— — — — —	WASTE WATER SEWER	— — — — —	WASTE WATER SEWER
— — — — —	WASTE WATER SEWER	— — — — —	— — — — —	SIDEWALK	— — — — —	CENTRELINE	— — — — —	CENTRELINE
○	MANHOLE	○	— — — — —	PLANNING	— — — — —	NORTH/WEST GUTTER	— — — — —	NORTH/WEST GUTTER
□	CATCH BASIN	□	— — — — —	PROPERTY LINE	— — — — —	SOUTH/EAST GUTTER	— — — — —	SOUTH/EAST GUTTER
∇	CURB INLET	∇	— — — — —	SURVEY BAR	— — — — —	N/W, S/E P'S	— — — — —	N/W, S/E P'S
⌒	BEND	⌒	— — — — —	GAS	— — — — —			
∇	REDUCER	∇	— — — — —	CURB STOP	— — — — —			
∇		∇	— — — — —	TEE	— — — — —			
∇		∇	— — — — —		— — — — —			
			— — — — —		— — — — —			
			— — — — —		— — — — —			

LOCATION APPROVED UNDERGROUND STRUCTURES

SUPV. U/G STRUCTURES COMMITTEE DATE

NOTE:
LOCATION OF UNDERGROUND STRUCTURES AS SHOWN ARE BASED ON THE BEST INFORMATION AVAILABLE BUT NO GUARANTEE IS GIVEN THAT ALL EXISTING UTILITIES ARE SHOWN OR THAT THE GIVEN LOCATIONS ARE EXACT. CONFIRMATION OF EXISTENCE AND EXACT LOCATION OF ALL SERVICES MUST BE OBTAINED FROM THE INDIVIDUAL UTILITIES BEFORE PROCEEDING WITH CONSTRUCTION.

NO.	ISSUED FOR CONSTRUCTION	DATE	BY
0	ISSUED FOR CONSTRUCTION	16/04/27	KGO
NO.	REVISIONS	DATE	BY

B.M. KGS BASE ELEV.
DWGS BASE ON C.S.R.S. NAD 83 SYSTEM UTM GRID.

KGS GROUP CONSULTING ENGINEERS

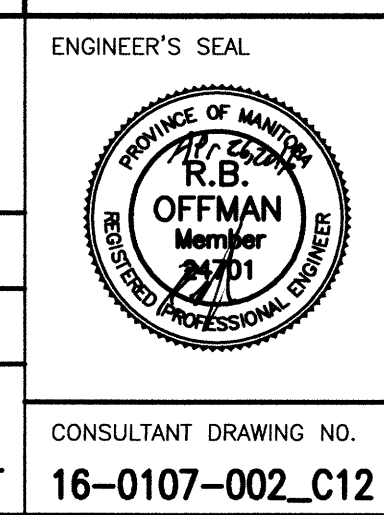
DESIGNED BY: MAT
CHECKED BY: [Signature]

DRAWN BY: GEL
APPROVED BY: [Signature]

HOR. SCALE: 1:250
VERTICAL: 1:50

RELEASED FOR CONSTRUCTION
DATE: [Signature]

CONSULTANT DRAWING NO. 16-0107-002_C12



THE CITY OF WINNIPEG
WATER AND WASTE DEPARTMENT

Winnipeg

PROJECT TITLE: 2016 WATER MAIN RENEWALS CONTRACT 4

SHEET OF 12 OF 14

COMPUTER FILE NAME: 16-0107-002_CALL

CITY DRAWING NUMBER: D-14341

CONSULTANT DRAWING NO. 16-0107-002_C12