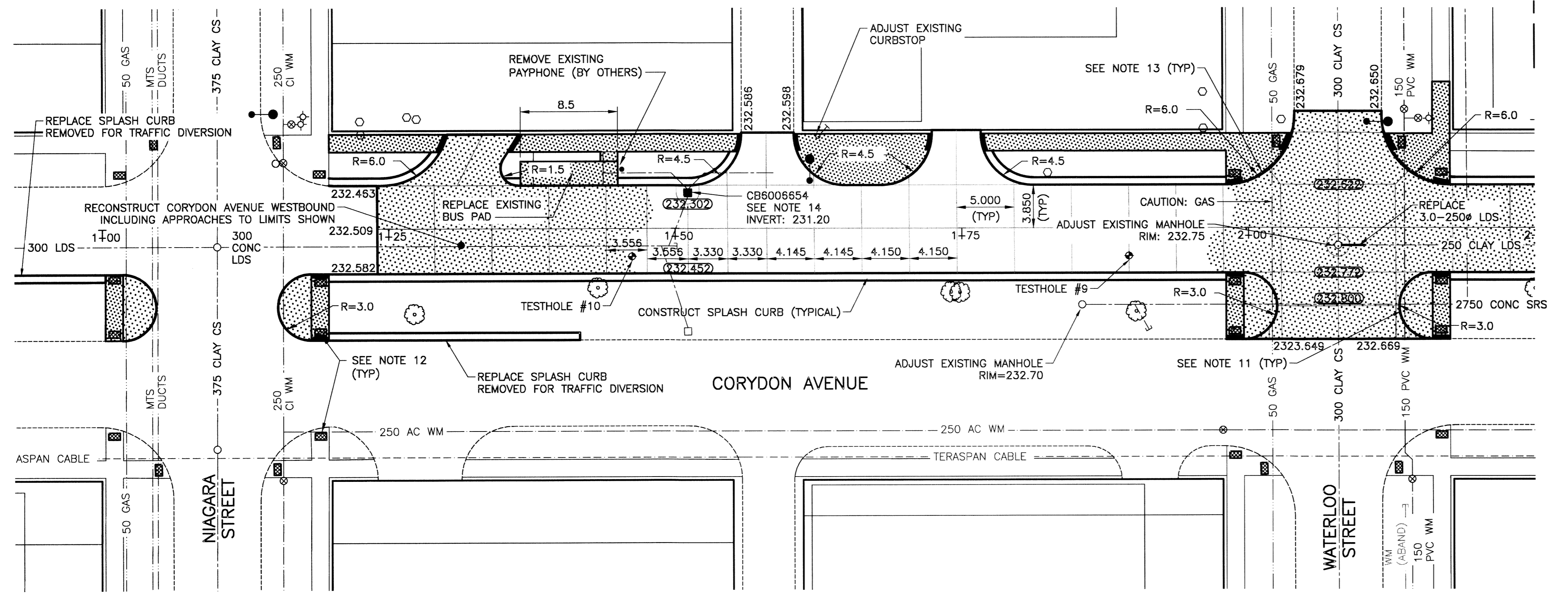
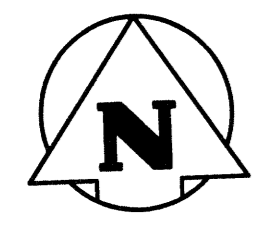


WESTBOUND - PROFILE

- NOTES:**
- STATION IN CENTRE OF CORYDON WESTBOUND LANES UNLESS OTHERWISE NOTED.
 - BASELINE IS CENTRELINE OF CORYDON WESTBOUND LANES.
 - WEST PROPERTY LINE OF NIAGARA STREET IS STA 1+00.0
 - ALL MEASUREMENTS TO BACK OF CURB.
 - ALL EXISTING TREES TO BE PROTECTED AND MAINTAINED THROUGHOUT CONSTRUCTION.
 - ALL BUS STOPS WITHIN LIMITS OF CONSTRUCTION TO BE TEMPORARILY RELOCATED BY OTHERS DURING WORKS.
 - HAND OR SOFT DIG METHODS REQUIRED OVER ALL UTILITIES AT INTERVALS DETERMINED BY THE ENGINEER TO DETERMINE DEPTH OF COVER.
 - NO WORKS, INCLUDING CONCRETE CUTTING OR BREAKING, TO BE UNDERTAKEN NEAR GAS LINES UNTIL DEPTH OF COVER IS DETERMINED AND A MB HYDRO SAFETY WATCH IS ON SITE.
 - ANY GAS MAINS OR SERVICES EXPOSED IN THE EXCAVATION AREA TO BE ROCK WRAPPED IN ACCORDANCE WITH MB HYDRO STANDARDS PRIOR TO WORK PROCEEDING ON SITE.
 - NO VIBRATORY COMPACTION PERMITTED WITHIN 1M OF GAS MAINS.
 - INSTALL MODIFIED BARRIER CURB AT ALL INTERSECTION RADII, ALLEY RADII, AND BULLNOSES.
 - INSTALL DETECTABLE WARNING TILES AT ALL WESTBOUND INTERSECTIONS.
 - CONSTRUCT NEW MONOLITHIC CURB RAMP (10mm HEIGHT INTEGRAL)
 - REPLACE EXISTING SD-24 CATCHBASIN INSTALL BARRIER CURB AND GUTTER INLET FRAME (AP-008) AND INLET COVER (AP-008) AND REPLACE 250 LEAD @ 2% MINIMUM GRADE.
 - TRANSVERSE JOINTS SPACED AT 5.0 INTERVALS UNLESS OTHERWISE NOTED.

CAUTION:
250mm AND 150mm CI WATER MAIN IS CATHODICALLY PROTECTED. THIS INCLUDES ANODE BANKS, WIRES AND CATHODIC PROTECTION TEST STATIONS. ANY DAMAGE TO THIS SYSTEM MUST BE REPORTED TO THE WATER AND WASTE DEPARTMENT IMMEDIATELY. FURTHERMORE ALL COSTS, MATERIALS AND LABOR ASSOCIATED WITH THE RESTORATION OF THIS SYSTEM WILL BE THE RESPONSIBILITY OF THE CONTRACTOR.

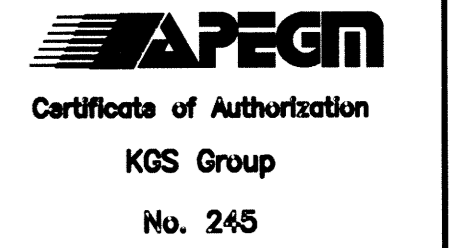
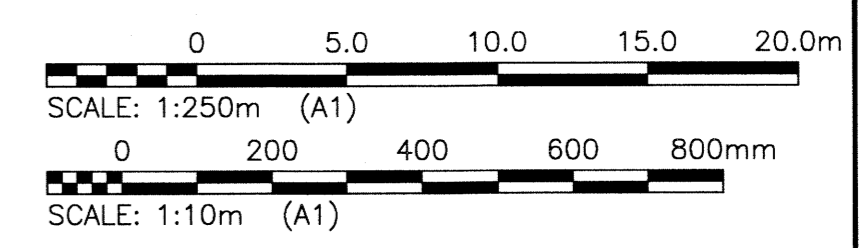


WESTBOUND - PLAN

PROPERTY LIMITS DELINEATION
DELINEATION OF PROPERTY LIMITS AS SHOWN ON THIS DWG DOES NOT REPRESENT A "LEGAL SURVEY". KGS GROUP MAKES NO REPRESENTATION OR WARRANTY AS TO THE ACCURACY OF PROPERTY LIMITS DELINEATED ON THIS DWG, NOR ON THE DIMENSIONAL ACCURACY OF DWG FEATURES RELATIVE TO THOSE PROPERTY LIMITS.

WARNING
NOTIFY THE GAS COMPANY OF THE PROPOSED LOCATION OF EXCAVATION.
TAKE PRECAUTION TO AVOID DAMAGE TO GAS COMPANY INSTALLATIONS.
SEE PROVINCIAL REGULATION 210/72 FOR DETAILS.

METRIC
WHOLE NUMBERS INDICATE MILLIMETRES
DECIMALIZED NUMBERS INDICATE METRES



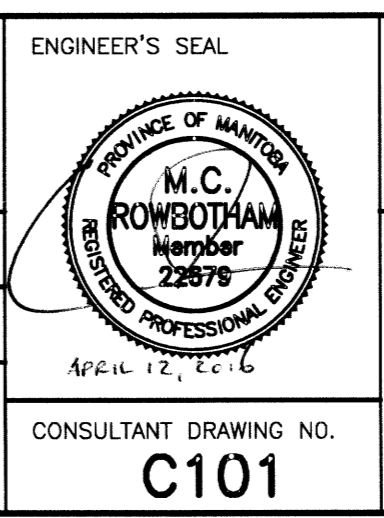
EXISTING	LEGEND-PLAN	PROPOSED	EXISTING	LEGEND-PLAN	PROPOSED	EXISTING	LEGEND-PROFILE	PROPOSED
300 LDS	LAND DRAINAGE SEWER	300 LDS	TEST HOLE	—	—	—	—	—
250 WWS	WASTE WATER SEWER	250 WWS	GUY WIRE	—	—	—	—	—
—	GAS	—	LIGHT STANDARD	—	—	—	—	—
—	HYDRO	—	BACK OF CURB	—	—	—	—	—
—	M.T.S.	—	CONCRETE	—	—	—	—	—
150 WM	WATERMAIN	150 WM	ASPHALT	—	—	—	—	—
—	HYDRANT	—	SIDEWALK	—	—	—	—	—
—	VALVE	—	PROPERTY LINE	—	—	—	—	—
—	MANHOLE	—	SURVEY BAR	—	—	—	—	—
—	CATCH BASIN	—	GEODETIC BENCHMARK	—	—	—	—	—
—	CURB INLET	—	ELEVATION	—	—	—	—	—
—	POLES	—	—	—	—	—	—	—
—	—	—	—	—	—	—	—	—

LOCATION APPROVED UNDERGROUND STRUCTURES

SUPV. U/G STRUCTURES COMMITTEE DATE

NOTE:
LOCATION OF UNDERGROUND STRUCTURES AS SHOWN ARE BASED ON THE BEST INFORMATION AVAILABLE BUT NO GUARANTEE IS GIVEN THAT ALL EXISTING UTILITIES ARE SHOWN OR THAT THE GIVEN LOCATIONS ARE EXACT. CONFIRMATION OF EXISTENCE AND EXACT LOCATION OF ALL SERVICES MUST BE OBTAINED FROM THE INDIVIDUAL UTILITIES BEFORE PROCEEDING WITH CONSTRUCTION.

B.M. KGS BASE ELEV. 249.213	COORDINATE SYSTEM: CGVD28
DESIGNED BY: JB	CHECKED BY: CR
DRAWN BY: DMW	APPROVED BY: [Signature]
HOR. SCALE: 1:250	RELEASED FOR CONSTRUCTION: [Signature]
VERTICAL: 1:10	DATE: 12/02/16
ISSUED FOR TENDER: 16/04/12	NO. REVISIONS: [Blank]



THE CITY OF WINNIPEG
PUBLIC WORKS DEPARTMENT
ENGINEERING DIVISION

PROJECT TITLE: CORYDON AVENUE WESTBOUND PAVEMENT RECONSTRUCTION
NIAGARA STREET TO MONTROSE STREET STA 1+00 TO STA 2+25

SHEET 01 OF 05
COMPUTER FILE NAME: CORYDON_CALL.DWG
CITY DRAWING NUMBER: P-3476-01

CONSULTANT DRAWING NO. C101