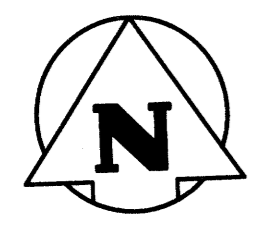
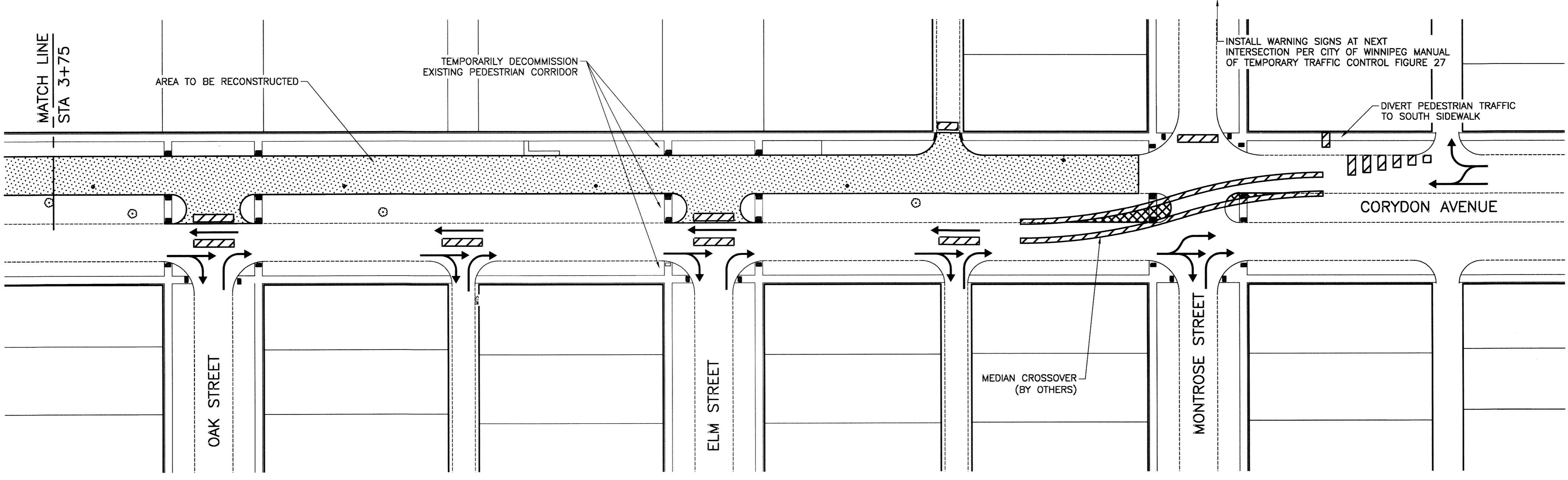


TRAFFIC DIVERSION PLAN



- NOTES:**
1. ALL BUS STOPS WITHIN LIMITS OF CONSTRUCTION TO BE TEMPORARILY DECOMMISSIONED BY OTHERS DURING WORKS.
 2. ALL BARRICADES AND SIGNAGE TO BE IN ACCORDANCE WITH THE MOST RECENT REVISION OF THE CITY OF WINNIPEG'S MANUAL OF TEMPORARY TRAFFIC CONTROL.
 3. MEDIAN CROSSOVER SIGNAGE WILL BE COMPLETED BY TRAFFIC SERVICES.
 4. RIGHT-TURN-ONLY SIGNAGE AT CORYDON INTERSECTIONS WILL BE ERECTED BY TRAFFIC SERVICES.
 5. THE CONTRACTOR IS RESPONSIBLE FOR ALL OTHER BARRICADES AND SIGNAGE REQUIRED TO CONTROL VEHICULAR AND PEDESTRIAN TRAFFIC.



PROPERTY LIMITS DELINEATION

DELINEATION OF PROPERTY LIMITS AS SHOWN ON THIS DWG DOES NOT REPRESENT A "LEGAL SURVEY". KGS GROUP MAKES NO REPRESENTATION OR WARRANTY AS TO THE ACCURACY OF PROPERTY LIMITS DELINEATED ON THIS DWG, NOR ON THE DIMENSIONAL ACCURACY OF DWG FEATURES RELATIVE TO THOSE PROPERTY LIMITS.

WARNING

NOTIFY THE GAS COMPANY OF THE PROPOSED LOCATION OF EXCAVATION. TAKE PRECAUTION TO AVOID DAMAGE TO GAS COMPANY INSTALLATIONS. SEE PROVINCIAL REGULATION 210/72 FOR DETAILS.

METRIC

WHOLE NUMBERS INDICATE MILLIMETRES
DECIMALIZED NUMBERS INDICATE METRES



300 IDS	LAND DRAINAGE SEWER	300 IDS	TEST HOLE				
250 WWS	WASTE WATER SEWER	250 WWS	GUY WIRE				
	GAS		LIGHT STANDARD				
	HYDRO		BACK OF CURB				
	M.T.S.		CONCRETE				
150 WM	WATERMAIN	150 WM	ASPHALT				
	HYDRANT		SIDEWALK				
	VALVE		PROPERTY LINE				
	MANHOLE		SURVEY BAR				
	CATCH BASIN		GEODETIC BENCHMARK				
	CURB INLET		ELEVATION				
	POLES						
EXISTING	LEGEND-PLAN	PROPOSED	EXISTING	LEGEND-PLAN	PROPOSED	EXISTING	LEGEND-PROFILE

LOCATION APPROVED UNDERGROUND STRUCTURES

SUPV. U/G STRUCTURES COMMITTEE DATE

NOTE: LOCATION OF UNDERGROUND STRUCTURES AS SHOWN ARE BASED ON THE BEST INFORMATION AVAILABLE BUT NO GUARANTEE IS GIVEN THAT ALL EXISTING UTILITIES ARE SHOWN OR THAT THE GIVEN LOCATIONS ARE EXACT. CONFIRMATION OF EXISTENCE AND EXACT LOCATION OF ALL SERVICES MUST BE OBTAINED FROM THE INDIVIDUAL UTILITIES BEFORE PROCEEDING WITH CONSTRUCTION.

B.M. KGS_BASE ELEV. 249.213 COORDINATE SYSTEM: CD028

KGS GROUP CONSULTING ENGINEERS

DESIGNED BY: JB CHECKED BY: CR
DRAWN BY: DMW APPROVED BY: Pjt
HOR. SCALE: 1:500 VERTICAL: NONE
RELEASED FOR CONSTRUCTION: 07/03/2016

ENGINEER'S SEAL

CONSULTANT DRAWING NO. **C105**

THE CITY OF WINNIPEG PUBLIC WORKS DEPARTMENT ENGINEERING DIVISION

PROJECT TITLE: **CORYDON AVENUE WESTBOUND PAVEMENT RECONSTRUCTION**

NIAGARA STREET TO MONTROSE STREET TRAFFIC DIVERSION PLAN

SHEET **05** OF **05**

COMPUTER FILE NAME: **CORYDON_CALL.DWG**

CITY DRAWING NUMBER

PLOT 1:1 (A-1)