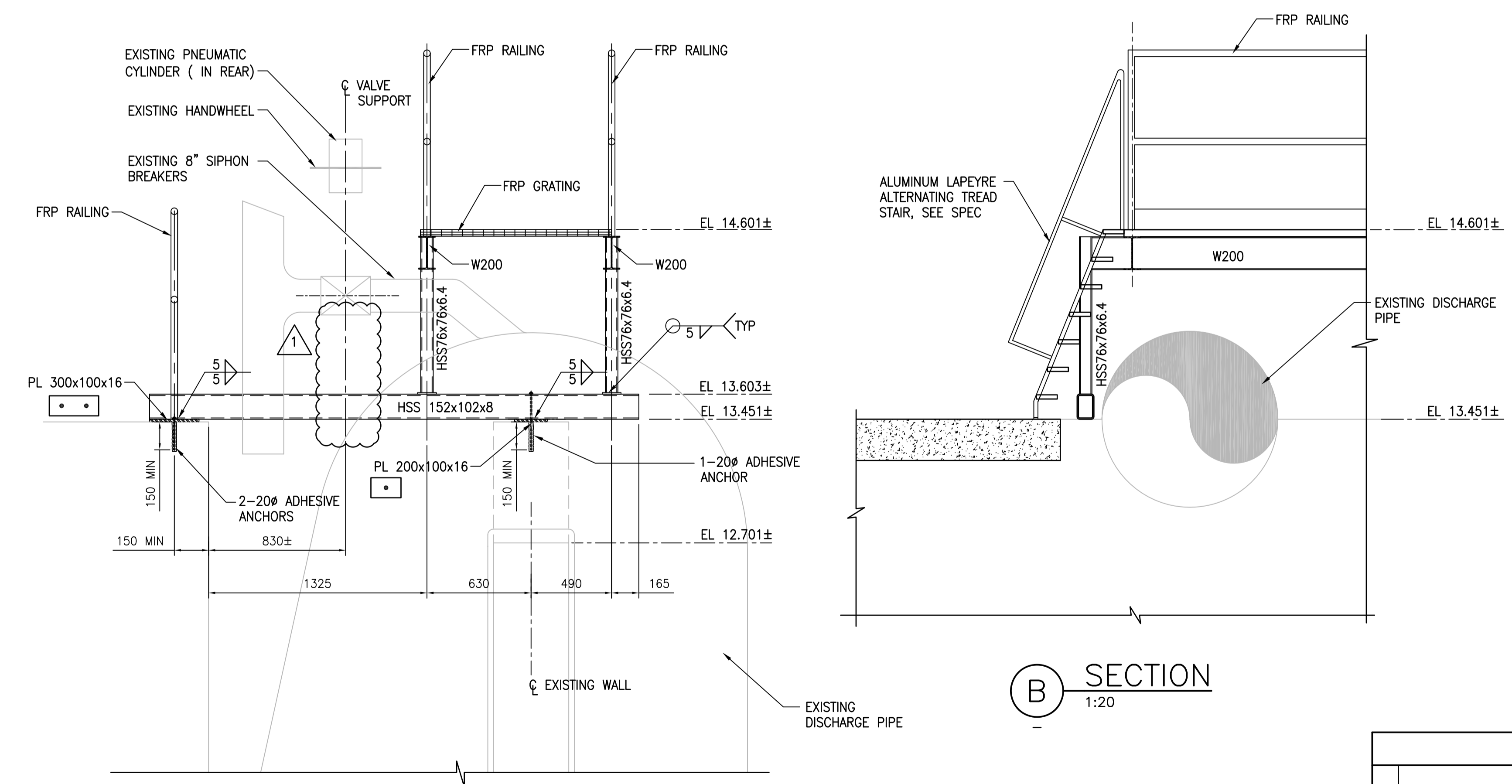


**PLATFORM PLAN AT EL 16.000±**  
1:50

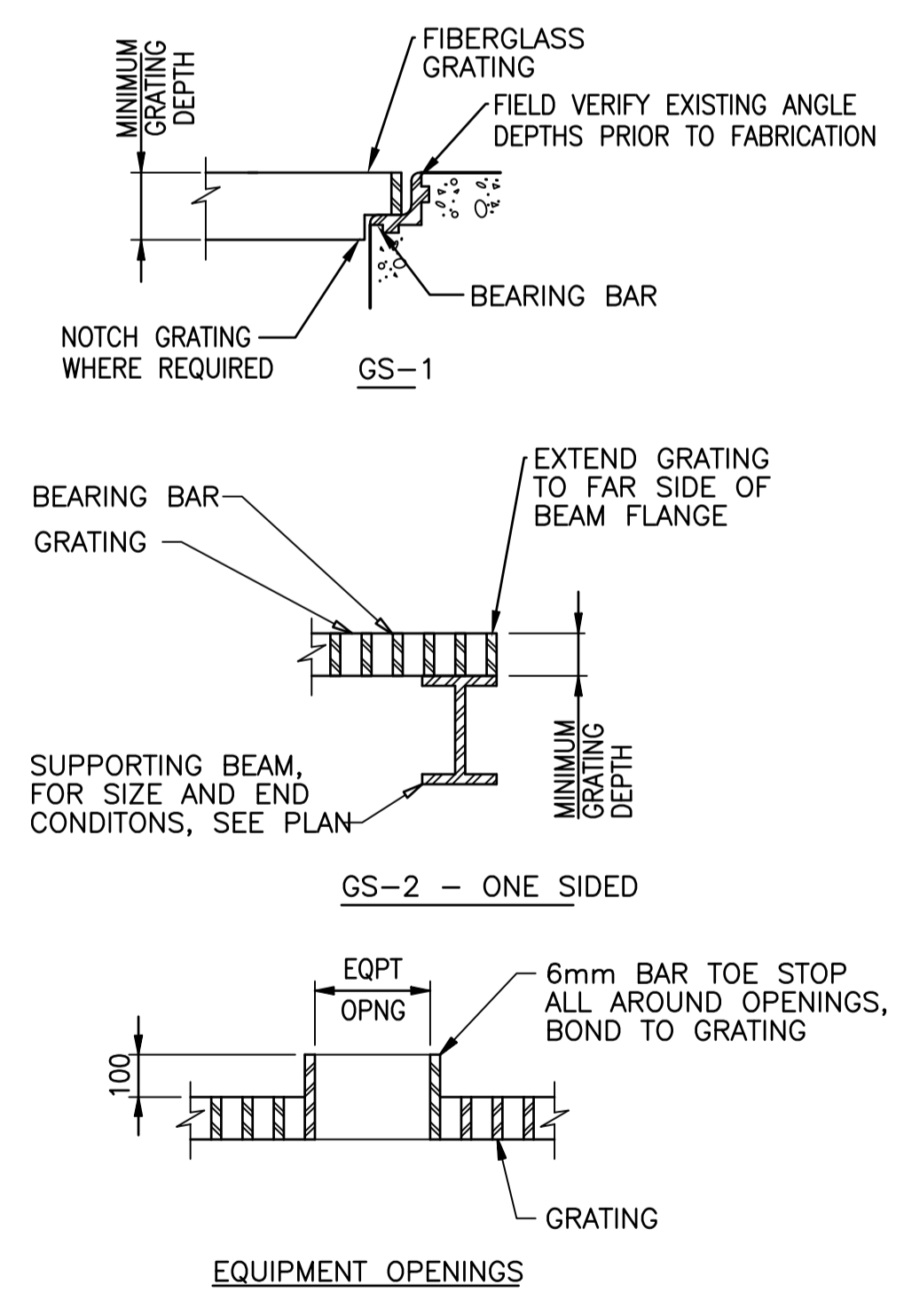


**A SECTION**  
1:20

**B SECTION**  
1:20

**C STANDARD GRATING - FIBERGLASS**  
NTS

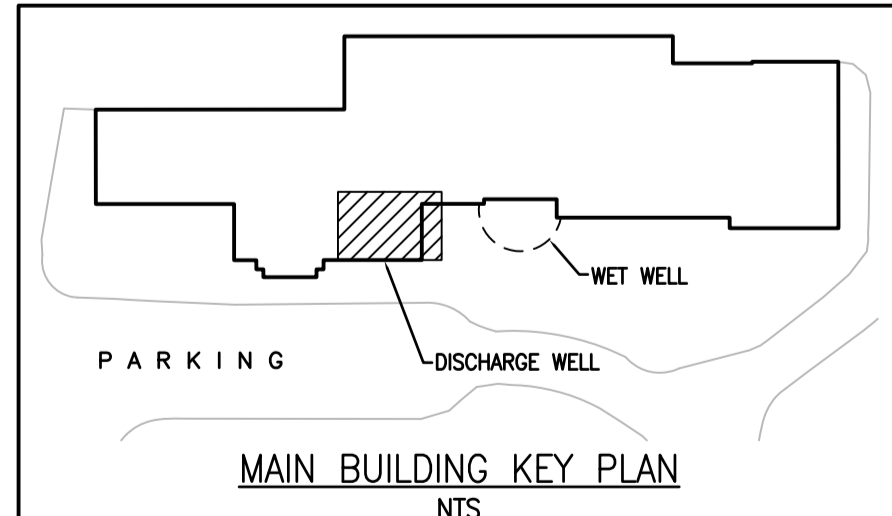
- NOTES:**
- LIVE LOAD ON PLATFORMS AND GRATING SHOWN: 5 kPa.
  - HOT-DIP GALVANIZE STEEL FRAMING, CONNECTIONS, ANCHORAGE AND APPURTENANCES AFTER FABRICATION.
  - TOP OF STEEL TO SUIT GRATING.
  - DISCHARGE WELL IS A CLASS 1, ZONE 1, GROUP D AREA. PLAN WORK ACCORDINGLY.
  - RESTORATION AND PAINTING:
- REFERENCES:**
- COMPLY WITH THE LATEST EDITION OF THE FOLLOWING STATUTES CODES AND STANDARDS AND ALL AMENDMENTS THERETO.
    - STEEL STRUCTURES PAINTING MANUAL VOL. 2 - SYSTEMS AND SPECIFICATIONS.
    - OCCUPATIONAL HEALTH AND SAFETY ACT, O.REG. 213/91 AND 692.
    - NATIONAL FIRE CODE OF CANADA.
    - SMAQMD ( SOUTH COAST AIR QUALITY MANAGEMENT DISTRICT ) RULE 1113 ARCHITECTURAL COATINGS.
- QUALITY ASSURANCE:**
- PRIOR TO COMMENCEMENT OF COATING OPERATION MEET AT SITE WITH MATERIAL SUPPLIER'S REPRESENTATIVE AND WITH THE ENGINEER TO REVIEW COATING WORK TO BE DONE AND FOLLOWING RELATED ITEMS:
    - EQUIPMENT USE AND SERVICING.
    - MATERIAL STORAGE AND APPLICATION TECHNIQUES.
    - SURFACE PREPERATION AND AMBIENT TEMPERATURE.
    - INSPECTION REQUIREMENTS.
    - SAFETY REQUIREMENTS DURING APPLICATION.
    - PROVIDING TEMPORARY PARTITIONS, AS REQUIRED, TO SEPERATE AREA OF APPLICATION FROM REMAINDER OF PROCESS OPERATION UNDER OPERATION WITHIN THE ROOM / SPACE.
    - MOCK UPS OR SAMPLES OF COATINGS IN HIGHLY CORROSIVE ENVIRONMENT.
  - MEET SCAQMD RULE 1113 ARCHITECTURAL COATINGS AND REGULATORY REQUIREMENTS LIMITING THE EMISSION OF VOLATILE ORGANIC COMPOUNDS.
  - COMPLY WITH INSTRUCTIONS ON PAINT MANUFACTURER'S SAFETY DATA SHEETS.
  - EXERCISE SPECIAL PRECAUTIONS OF SAFETY OF WORKMEN APPLYING COATING IN ENCLOSED AREAS BY MEETING REQUIREMENTS OUTLINED IN ONTARIO REGULATION 691 OCCUPATIONAL HEALTH AND SAFETY ACT AND REGULATIONS FOR CONSTRUCTION PROJECTS.
- EXAMINATION:**
- EXAMINE EXISTING SURFACES WHICH ARE TO BE REFINISHED .
  - REPORT SURFACES WHICH ARE DEFECTIVE, OR WHICH CANNOT BE PREPARED BY USUAL SANDING AND CLEANING. REPORT UNSATISFACTORY SITE AND ENVIRONMENTAL CONDITIONS.
  - COMMENCE WORK AFTER CORRECTIVE WORK HAS BEEN COMPLETED.
- MATERIALS:**
- PROVIDE COATING SYSTEM, SHER-GLASS LINING COATING SYSTEM BY SHERWIN WILLIAMS, SPECIFICALLY USED FOR HARSH CHEMICAL CONDITIONS WHICH CONSISTS OF THE FOLLOWINGS:
    - PRIME - ONE COAT OF DURAPLATE 235@4-6 MILS DFT. FOR GALVANIZED STEEL PRIME PER RECOMMENDATION OF MANUFACTURER OF COATING
    - FINISH - ONE COAT OF SHER-GLASS FF@8-12MILS DFT
- APPLICATIONS:**
- SNAD BLASTING EXISTING STEEL TO SSPC-SP 6.
  - APPLY PAINT MATERIALS FREE FROM DEFECTS.
  - MASK SURFACES WHERE NECESSARY, TO PREVENT CONTAMINATION OR MARRING OF ADJACENT MATERIAL, OR DIFFERENT PROTECTIVE COATING SYSTEM.
  - PREVENT OVERSPRAY ONTO ADJACENT SURFACES OR PROPERTIES.
  - DO NOT APPLY PAINT OVER SEALANT.



- GENERAL NOTES:**
- EXTEND GRATING CONTINUOUSLY OVER GATE GUIDES AND GATES.
  - NOTCH GRATING SUPPORTS AT GATES AS REQUIRED.
  - GRATING SPAN - SEE PLAN.
  - WIDTH OF GRATING SECTIONS SHALL NOT EXCEED 900mm.
  - SHOP DRAWINGS BASED ON FIELD DIMENSIONS SHALL BE SUBMITTED TO THE ENGINEER PRIOR TO FABRICATION.
  - UNLESS NOTED OTHERWISE ON PLANS. MINIMUM GRATING THICKNESS SHALL BE AS TABULATED IN TABLE BELOW
  - DESIGN LL = 5.0 kPa
  - PROVIDE SST GRATING FASTENERS AS REQUIRED.
  - THE HORIZONTAL CLEARANCE BETWEEN THE GRATING AND GRATING SUPPORTS SHALL NOT BE LESS THAN 6mm NOR GREATER THAN 13mm.
  - ALL GRATING SECTIONS, WHEN IN PLACE, SHALL ALWAYS BE FIRMLY ANCHORED TO THEIR SUPPORTS.

| FOOT TRAFFIC |                       |                |
|--------------|-----------------------|----------------|
| MAXIMUM SPAN | MINIMUM GRATING DEPTH | * GRATING TYPE |
| 1050         | 40                    | M OR P         |
| 1200         | 40                    | M OR P         |
| 1350         | 40                    | M OR P         |
| 1500         | 50                    | P              |
| 1650         | 50                    | P              |

\* M = MOLDED GRATING  
\* P = PULTRUDED GRATING



|                             |                          |  |                        |
|-----------------------------|--------------------------|--|------------------------|
|                             |                          | ENGINEER'S SEAL                                |                        |
|                             |                          | ORIGINAL SIGNED BY<br>S.L.E. LUI<br>2016-04-12 |                        |
| DESIGNED BY:<br>E. LUI      | CHECKED BY:<br>R. PARIKH | DATE:  | DATE:                  |
| DRAWN BY:<br>C. RYNARD      | APPROVED BY:             | ISSUED FOR CONSTRUCTION BY:                    | DATE:                  |
| SCALE:<br>N.T.S.            | DATE:                    | DATE:  | DATE:                  |
| 1 ISSUED FOR ADDENDUM NO. 1 | 05/2016                  | JBC E.L.                                       |                        |
| 0 ISSUED FOR TENDER         | 04/2016                  | JBC E.L.                                       |                        |
| NO. REVISIONS               | DATE                     | DESIGN/CHECK                                   | CONSULTANT NO.: 390903 |

**THE CITY OF WINNIPEG**  
WATER AND WASTE DEPARTMENT

NORTH END SEWAGE TREATMENT PLANT (NEWPCC)  
HEADEND DISCHARGE WELL STRUCTURAL UPGRADES  
STRUCTURAL DISCHARGE WELL  
PLATFORM PLAN AND SECTIONS

CITY DRAWING NUMBER: 1-0101M-S0012  
SHEET: 001  
REV: 1  
SIZE: A1