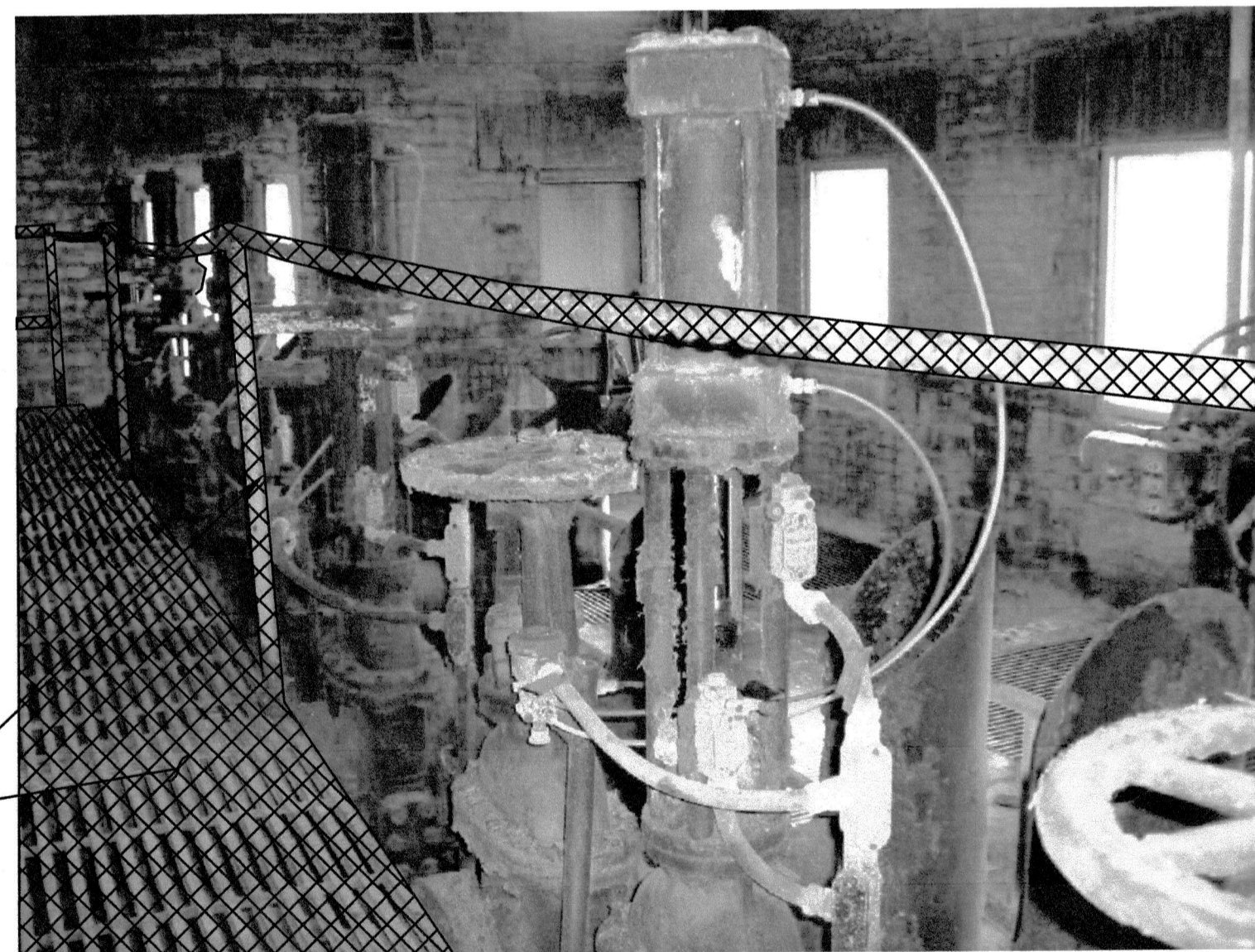
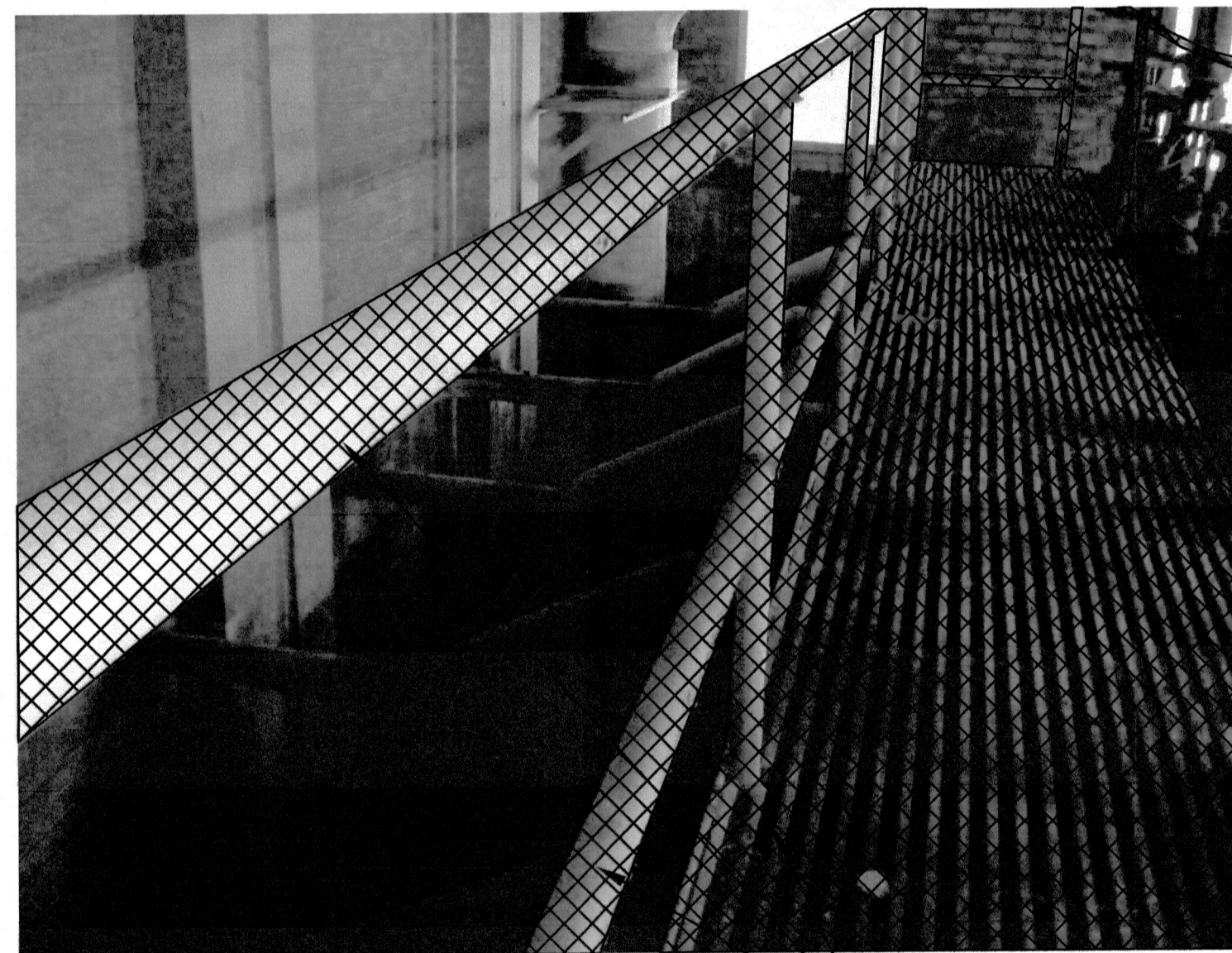


UPPER LEVEL PART PLAN
1:50



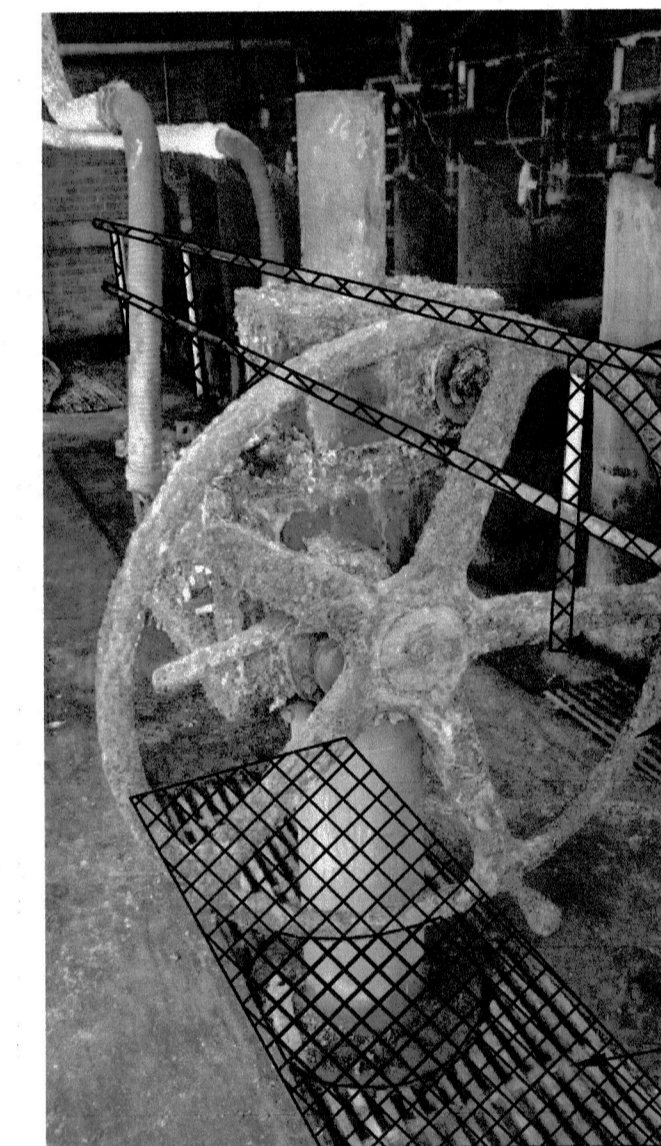
1 PHOTO
NTS

SEE NOTE 1



2 PHOTO
NTS

SEE NOTE 1

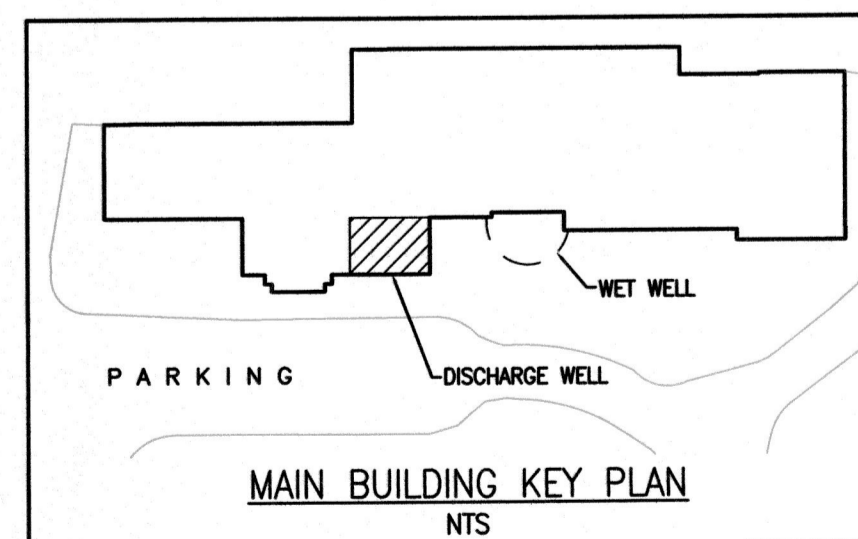


3 PHOTO
NTS

DEMOLISH RAILING ALL AROUND OPENING

BYPASS SERVICE GATE OPERATOR TO OUTFALL (M174) REMOVE VALVE HANDWHEEL AND PEDESTAL CLEAN TO SSPC-SP2. RE-INSTALL USING NEW BOLTS AFTER CONSTRUCTION WORKS ARE COMPLETED. REPAINT EXISTING, SEE NOTE 5 ON DRAWING 1-0101M-S0015

SEE NOTE 2



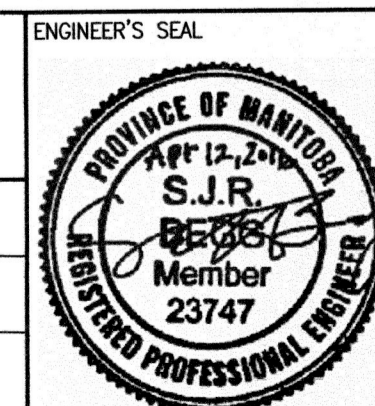
MAIN BUILDING KEY PLAN
NTS

NOTES:

1. DEMOLISH AND REMOVE EXISTING PLATFORM INCLUDING: GRATING, SUPPORT MEMBERS, STAIRS AND RAILING. EXISTING PLATFORM IS CONSIDERED UNSAFE FOR GENERAL ACCESS.
2. DEMOLISH AND REMOVE EXISTING GRATING. EXISTING GRATING IS CONSIDERED UNSAFE FOR GENERAL ACCESS.
3. DISCHARGE WELL IS A HAZARDOUS AREA. ANY TOOLS, EQUIPMENT, LIGHTING USED DURING DEMOLITION OR CONSTRUCTION WORK SHALL BE RATED FOR HAZARDOUS AREA CLASSIFICATION USE.



		DESIGNED BY: E LUI	CHECKED BY: R. PARIKH
		DRAWN BY: C. RYNARD	APPROVED BY: <i>C. Sharp</i>
SCALE: N.T.S. DATE: April 13, 2016 CONSULTANT NO.: 390903		ISSUED FOR CONSTRUCTION BY: <i>B. St</i> DATE: APRIL 13, 2016	
0	ISSUED FOR TENDER	04/2016	JBC E.L.
NO.	REVISIONS	DATE	DESIGN CHECK



THE CITY OF WINNIPEG
WATER AND WASTE DEPARTMENT

NORTH END SEWAGE TREATMENT PLANT (NEWPCC)
HEADEND DISCHARGE WELL STRUCTURAL UPGRADES
GENERAL
DISCHARGE WELL
UPPER LEVEL PART PLAN AND DEMOLITION PHOTOS

CITY DRAWING NUMBER	SHEET	REV.	SIZE
1-0101M-D0002	001	0	A1