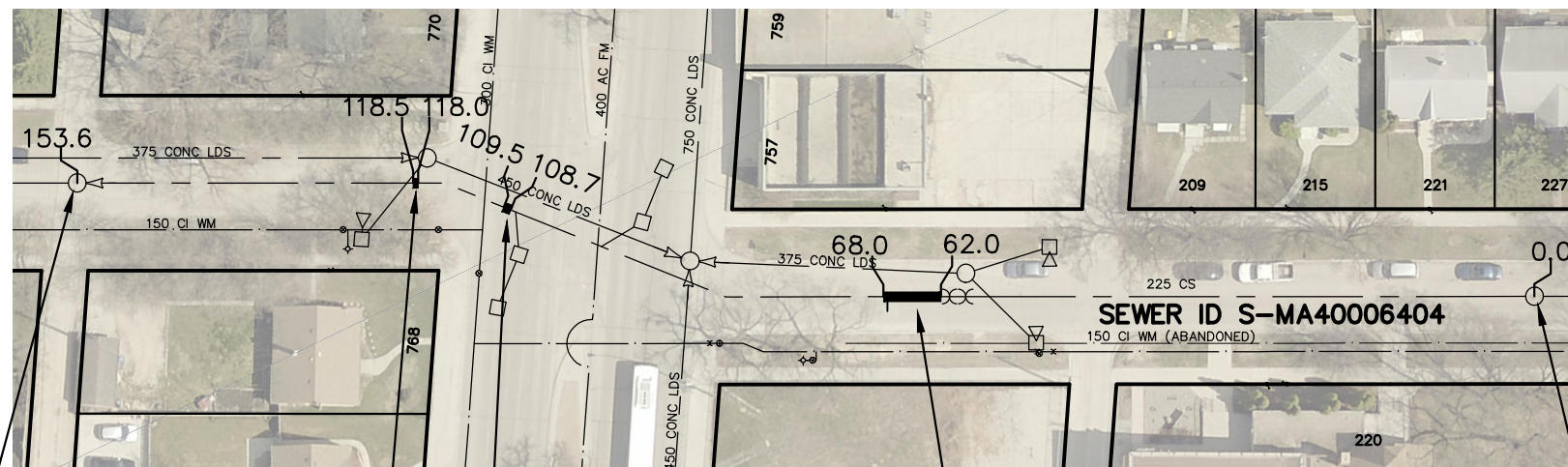
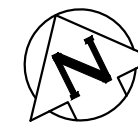


HELMSDALE AVENUE



SEWER JUNCTION INFORMATION FROM SEWER VIDEO INSPECTION		
SEWER ID S-MA40006404		
DISTANCE FROM MH ID S-MH40005914	DIAMETER	CLOCK
11.7	150	2
24.1	150	2
28.9	150	10
37.6	150	10
45.5	150	10
54.2	150	2
55.4	150	2
60.1	150	9
67.6	150	10
96.5	150	2
108.3	150	2
113.9	100	2
124.5	150	10
129.4	150	9
133.1	150	2

S-MH40005874
RIM 230.61
INV W 227.78
INV E 227.77

0.5m OF 225mm PVC
SEWER REPAIR (SD-022A)

0.8m OF 225mm PVC
SEWER REPAIR (SD-022A)

HENDERSON HWY

6.0m OF 225mm PVC
SEWER REPAIR (SD-022B)
INCLUDING 1 SERVICE CONNECTION

S-MH40005914
RIM 230.28
INV W 228.38
INV E 228.38

WARNING

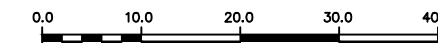
IF POWER EQUIPMENT OR EXPLOSIVES ARE TO BE USED FOR EXCAVATION ON THIS PROJECT THE CONTRACTOR MUST:

- 1) NOTIFY THE GAS COMPANY OF THE PROPOSED LOCATION OF EXCAVATION.
- 2) TAKE PRECAUTION TO AVOID DAMAGE TO GAS COMPANY INSTALLATIONS.

SEE PROVINCIAL REGULATION 210/72 FOR DETAILS

METRIC

WHOLE NUMBERS INDICATE MILLIMETRES
DECIMALIZED NUMBERS INDICATE METRES



LOCATION APPROVED UNDERGROUND STRUCTURES

SUPV. U/G STRUCTURES COMMITTEE DATE

NOTE:

LOCATION OF UNDERGROUND STRUCTURES AS SHOWN ARE BASED ON THE BEST INFORMATION AVAILABLE BUT NO GUARANTEE IS GIVEN THAT ALL EXISTING UTILITIES ARE SHOWN OR THAT THE GIVEN LOCATIONS ARE EXACT. CONFIRMATION OF EXISTENCE AND EXACT LOCATION OF ALL SERVICES MUST BE OBTAINED FROM THE INDIVIDUAL UTILITIES BEFORE PROCEEDING WITH CONSTRUCTION.

B.M. ELEV.			
NO.	REVISIONS	DATE	BY

DESIGNED BY	NC	CHECKED BY	SC	
DRAWN BY	RJ	APPROVED BY	KZ	
SCALE:	1:750	RELEASED FOR CONSTRUCTION	KAZ ZUREK	
HORIZONTAL		DATE		2016 04 22
VERTICAL	DATE	2016 04 26	DATE	2016 04 22

ENGINEER'S SEAL	
ORIGINAL SIGNED BY S.R.J. COURNOYER 16-04-22	
CONSULTANT DRAWING NUMBER	-

THE CITY OF WINNIPEG
WATER AND WASTE DEPARTMENT
ENGINEERING DIVISION

2015 SUPPLEMENTAL SEWER REPAIRS
BY EXTERNAL POINT REPAIR
HELMSDALE AVENUE
1ST MH E TO
1ST MH W OF HENDERSON HIGHWAY

SHEET 12 OF 21
CITY DRAWING NUMBER
11272