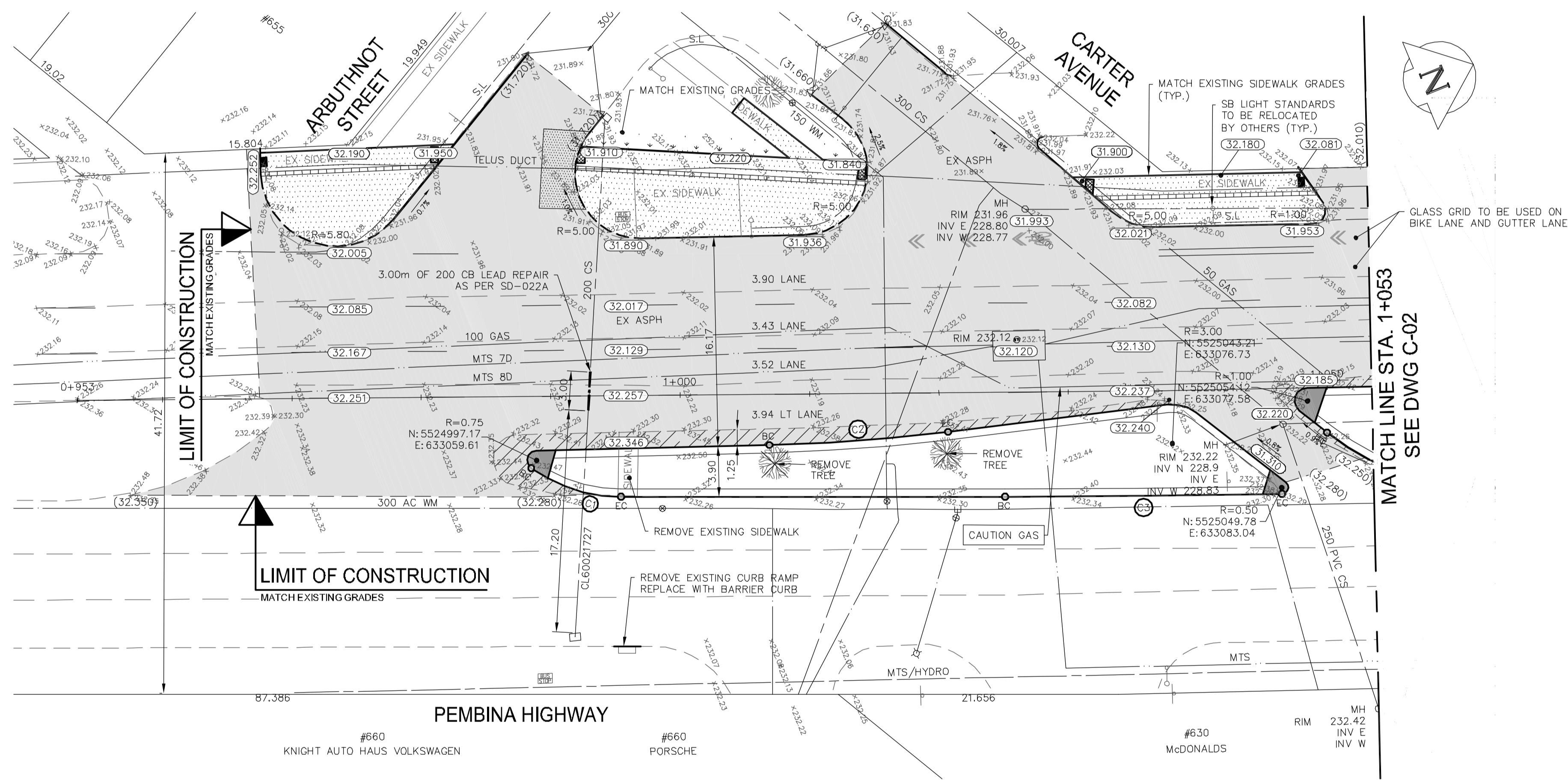


PEMBINA HIGHWAY SOUTHBOUND PROFILE



Curve Table	
Curve #	Length
C1	C1 Δ R T L 35°19'14" 12,000 3.82 7.40
	BC 5524996.551 633059.999
	EC 5525002.162 633064.638
C2	C2 Δ R T L 5°40'27" 140,000 6.94 13.86
	BC 5525014.279 633065.205
	EC 5525027.481 633069.424
C3	C3 Δ R T L 1°13'32" 1000,000 10.69 21.39
	BC 5525029.692 633075.719
	EC 5525049.619 633083.492

FOR SECTIONS AND DETAILS
REFER TO C-20

FOR TENDER PURPOSES ONLY

NOTE: These design documents are prepared solely for the use by the party with whom the design professional has entered into a contract and there are no representations of any kind made by the design professional to any party with whom the design professional has not entered into a contract.

LOCATIONS APPROVED UNDERGROUND STRUCTURES

SIGNED BY: _____ DATE: _____
SUP/UG STRUCTURES

LOCATION OF UNDERGROUND STRUCTURES AS SHOWN ARE BASED ON THE BEST INFORMATION AVAILABLE BUT NO GUARANTEE IS GIVEN THAT ALL EXISTING UTILITIES ARE SHOWN OR THAT THE GIVEN LOCATIONS ARE EXACT CONFIRMATION OF EXISTENCE AND EXACT LOCATION OF ALL SERVICES MUST BE OBTAINED FROM THE INDIVIDUAL UTILITIES BEFORE PROCEEDING

G.B.M. BENCHMARK LOCATION LOCATED ON "O" OF OPEN ON HYDRANT, SOUTHEAST CORNER OF PEMBINA HIGHWAY AND DALY STREET NORTH
ELEV. 232.929

NO.	REVISIONS	DATE	BY
3	ISSUED FOR TENDER	16.MAY.16	VM
2	ISSUED TO UNDERGROUND STRUCTURES	16.MAY.16	VM
1	ISSUED FOR CLIENT REVIEW	28.APR.16	VM

MMM GROUP
 Suite 111 - 93 Lombard Ave
 Winnipeg, MB R3B 3B1
 T. 204.943.3178
 F. 204.943.4948
 www.mmmgroup.ca

DESIGNED BY	CHECKED BY
SQ/JP	VM/TP
DRAWN BY	APPROVED BY
HK/LT	VM

ENGINEER'S SEAL
V.M. MAROTI
 Member
 30809
 REGISTERED PROFESSIONAL ENGINEER

THE CITY OF WINNIPEG
 PUBLIC WORKS DEPARTMENT
 ENGINEERING DIVISION

PEMBINA HIGHWAY
 FROM CARTER AVENUE TO OSBORNE STREET

PAVEMENT REHABILITATION
 SOUTHBOUND STA. 0+967 - STA. 1+053

BID NO. 386-2016

- NOTES:
- ALL WORK AND MATERIALS TO BE IN ACCORDANCE WITH THE LATEST REVISION OF THE CITY OF WINNIPEG STANDARD CONSTRUCTION SPECIFICATIONS.
 - ALL ROADWAY DIMENSIONS SHOWN ARE TO BACK OF CURB.
 - ALL LIGHT STANDARDS AND SIGNALS TO BE RELOCATED OR REMOVED AS REQUIRED. (BY OTHERS)
 - CURB 150MM REVEAL UNLESS OTHERWISE SHOWN.
 - ADD 200.00 TO ALL ELEVATIONS TO OBTAIN GEODETIC ELEVATIONS.
 - ADDITIONAL SIDEWALK AND CURB RENEWALS, JOINT AND SLAB REPAIRS WILL BE IDENTIFIED PRIOR TO COMMENCING WORK ON THE PROJECT.
 - ALL RADII TO BE MODIFIED BARRIER CURB AT APPROACHES AND INTERSECTIONS.
 - REGRADE MEDIAN BOULEVARD TO NEW GRADE AS REQUIRED.

METRIC
 WHOLE NUMBERS INDICATE MILLIMETRES
 DECIMALIZED NUMBERS INDICATE METRES

APEGM
 Certificate of Authorization
 MMM Group Limited
 No. 4531

May 16, 2016 - 11:08am
 P:\3516001-5910099\Construction Drawings\5910006 C01-C12 Rehabilitation Issued for Tender_20160516.dwg - tab:STA_0+980.00 - STA_1+080.00