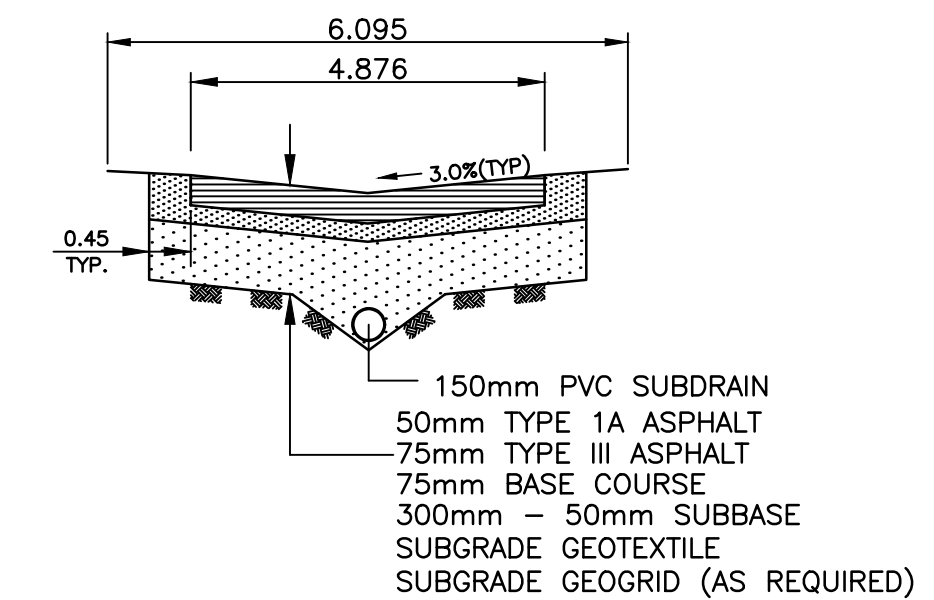
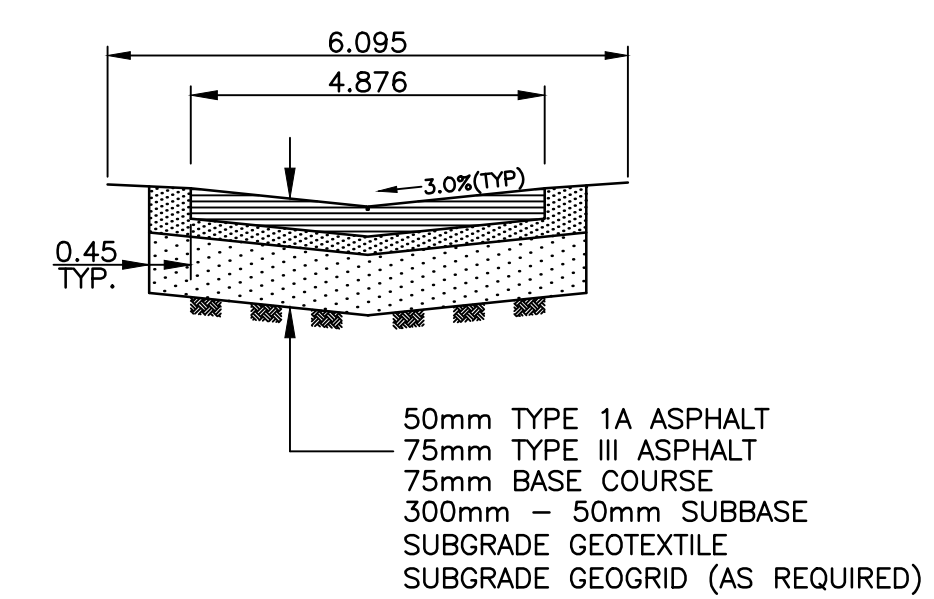


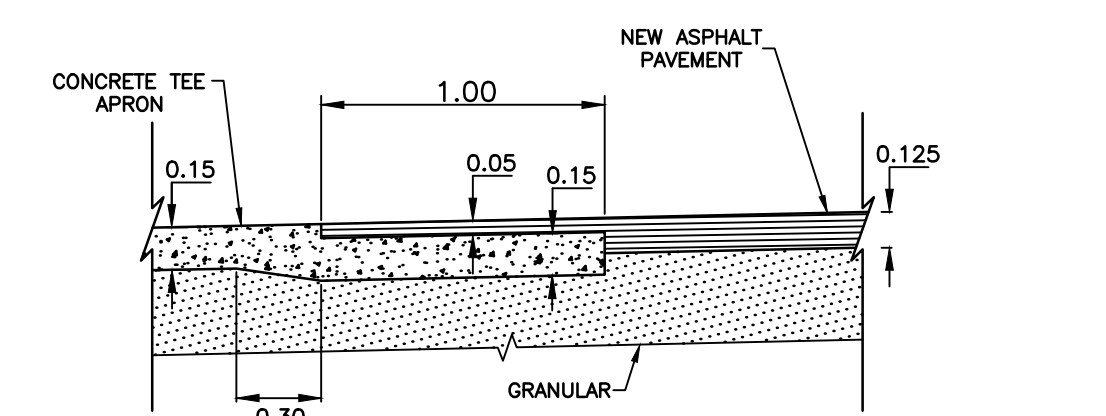
- NOTES:**
- ISOLATE EXISTING HYDRO POLES AS DIRECTED BY CONTRACT ADMINISTRATOR
 - RENEW EXISTING APPROACHES AS DIRECTED BY CONTRACT ADMINISTRATOR
 - ADDITIONAL EXCAVATION AND INSTALLATION OF SUBGRADE GEOGRID TO BE DETERMINED BY CONTRACT ADMINISTRATOR
 - ADJUSTMENTS TO PROPOSED CROSSFALL, WHERE REQUIRED, ARE TO BE DETERMINED BY CONTRACT ADMINISTRATOR TO SUIT EXISTING DRIVEWAYS, APPROACHES, ETC.
 - ALL LAND DRAINAGE SEWER EXCAVATIONS TO BE JETTED, FLOODED AND TAMPED AS PER CW2030-R7



TYPICAL ALLEY CROSS SECTION WITH SUBDRAIN
N.T.S.



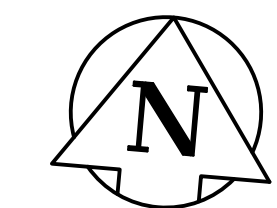
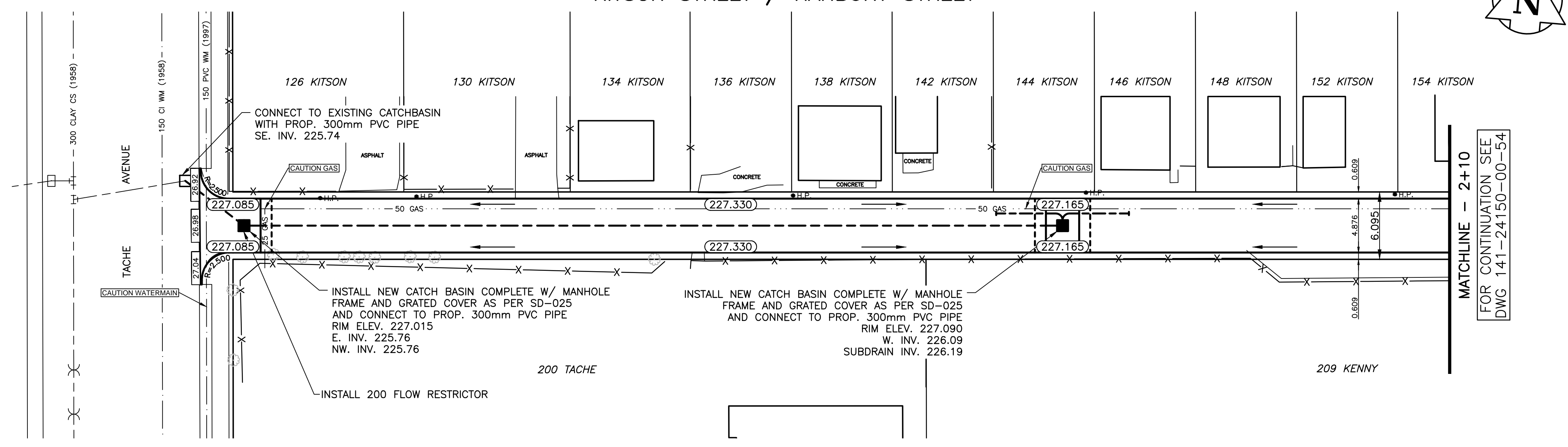
TYPICAL ALLEY CROSS SECTION
N.T.S.



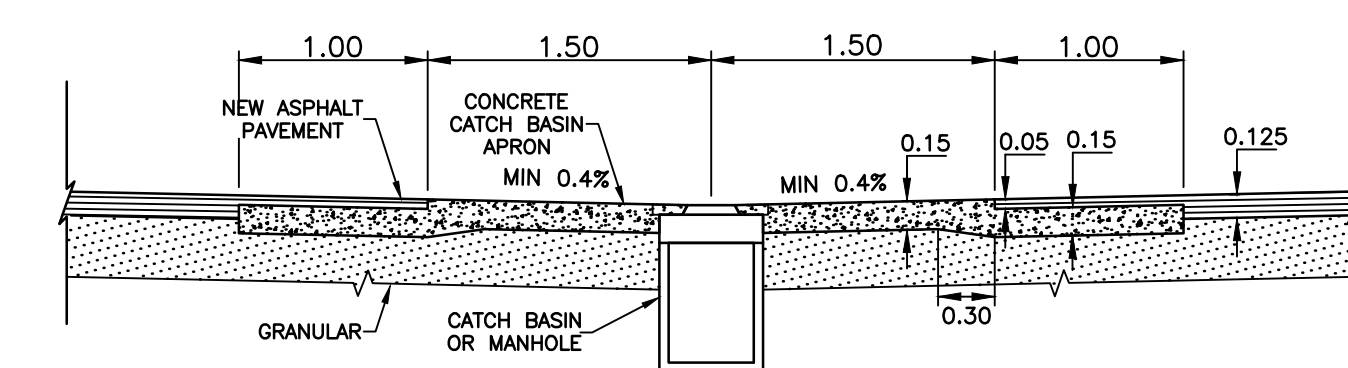
TYPICAL TEE APRON TIE-IN DETAIL
N.T.S.

CHAINAGE ALONG C OF PUBLIC RIGHT-OF-WAY

KITSON STREET / HANBURY STREET



MATCHLINE - 2+10
FOR CONTINUATION SEE DWG 141-24150-00-54



TYPICAL CATCHBASIN APRON DETAIL
N.T.S.

"Description of property limits, and existing and/or proposed features relative to these limits as shown on this drawing do not represent a Legal Survey. WSP makes no representation or guarantee that the property limit information is accurate. WSP accepts no responsibility for damages, if any, suffered by any third party as a result of decisions made or actions based on this drawing."

	WATERMAIN			M.T.S.			WATERMAIN	
	HYDRANT			TRAFFIC SIGNAL			VALVE	
	VALVE			CONCRETE/ASPHALT			LAND DRAINAGE SEWER	
	CURB STOP			SIDEWALK			WASTE WATER SEWER	
	WASTE WATER SEWER			CURB RAMP			CENTERLINE	
	LAND DRAINAGE SEWER			PROPERTY LINE			SOUTH & EAST GUTTER	
	C.B. LEAD			ELEVATIONS			NORTH & WEST GUTTER	
	MANHOLE			TEST HOLE LOCATION			S. & E. PAD/GARG.	
	CATCH BASIN			GAS			N. & W. PAD/GARG.	
	HYDRO							
	EXISTING			LEGEND - PLAN			LEGEND - PROFILE	

LOCATION APPROVED UNDERGROUND STRUCTURES

SUPV. U/G STRUCTURES COMMITTEE	DATE	
NOTE:		
LOCATION OF UNDERGROUND STRUCTURES AS SHOWN ARE BASED ON THE BEST INFORMATION AVAILABLE BUT NO GUARANTEE IS GIVEN THAT ALL EXISTING UTILITIES ARE SHOWN OR THAT THE GIVEN LOCATIONS ARE EXACT. CONFIRMATION OF EXISTENCE AND EXACT LOCATION OF ALL SERVICES MUST BE OBTAINED FROM THE INDIVIDUAL UTILITIES BEFORE PROCEEDING WITH CONSTRUCTION.		

B.M. ELEV.		
NO.	REVISIONS	DATE BY
2	ISSUE FOR TENDER	2016/05/24 R.H.
1	COW REVIEW	MM/16 K.K.
		DATE BY

WSP 1600 BUFFALO PLACE WINNIPEG, MB, R3T 6B8 PHONE: 204-477-6650 FAX: 204-474-2864 WWW.WSPGROUP.COM

DESIGNED BY: M.B.S. CHECKED BY: R.H.
DRAWN BY: M.B.S. APPROVED BY: I.McK.
HOR. SCALE: 1:250
VERT. SCALE: 1:25
DATE: APRIL 2016

ENGINEERS SEAL
CONSULTANT DRAWING NO. 141-24150-00-53

THE CITY OF WINNIPEG
PUBLIC WORKS DEPARTMENT

2016 LOCAL IMPROVEMENTS - CONTRACT 3
KITSON STREET / HANBURY STREET LANE
FROM TACHE AVENUE TO STA. 2+10
ASPHALT PAVEMENT

CITY DRAWING NO. SHEET 1 OF 2
388-2016

