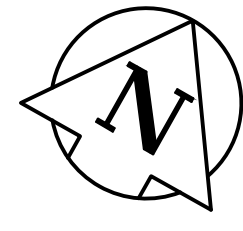
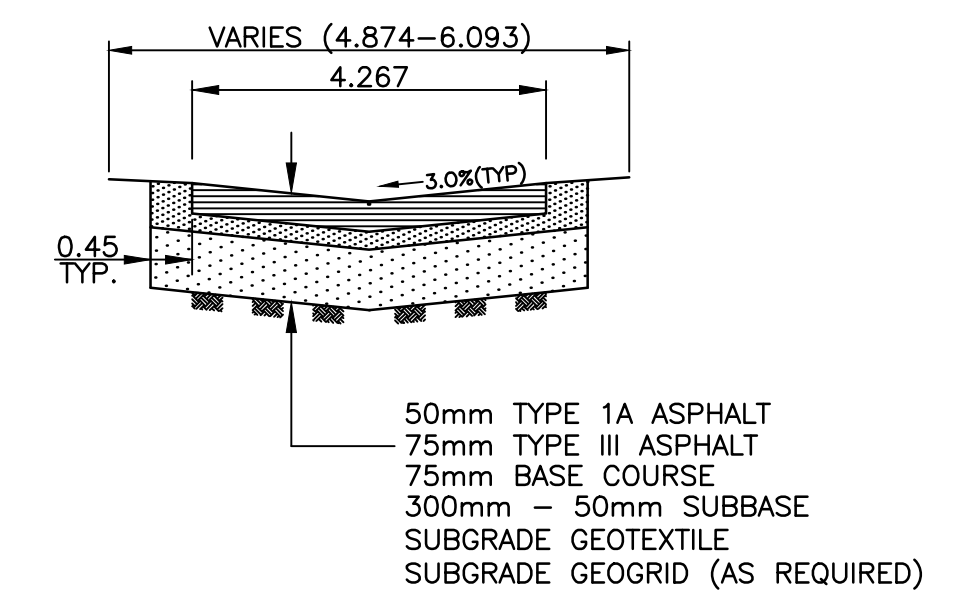


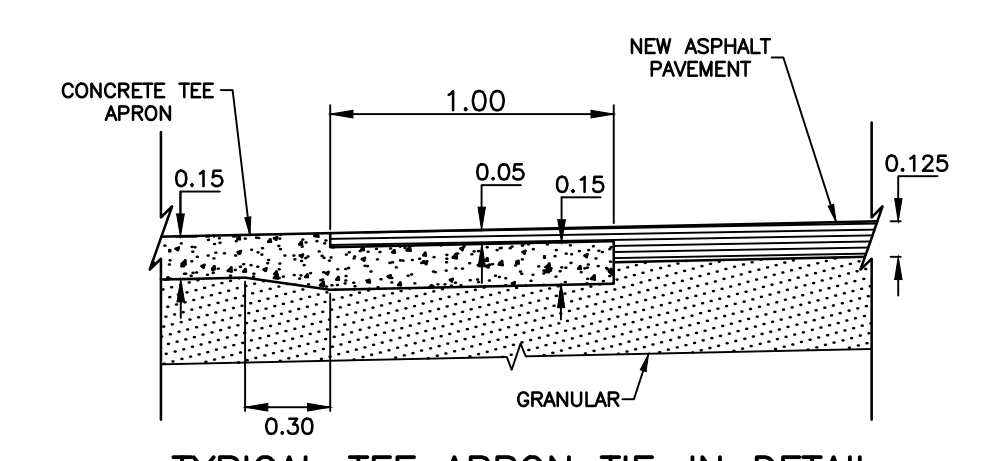
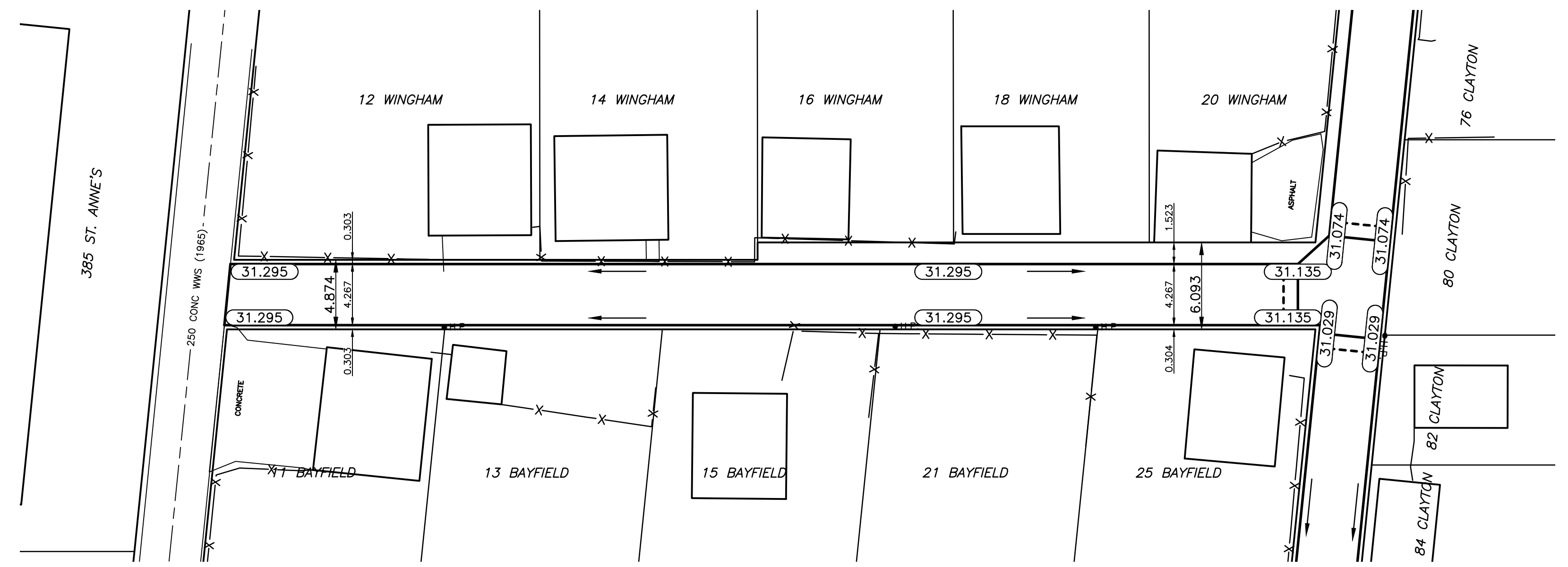
CHAINAGE ALONG C OF PUBLIC RIGHT-OF-WAY
WINGHAM AVENUE / BAYFIELD AVENUE



- NOTES:**
- ISOLATE EXISTING HYDRO POLES AS DIRECTED BY CONTRACT ADMINISTRATOR
 - RENEW EXISTING APPROACHES AS DIRECTED BY CONTRACT ADMINISTRATOR
 - ADDITIONAL EXCAVATION AND INSTALLATION OF SUBGRADE GEOGRID TO BE DETERMINED BY CONTRACT ADMINISTRATOR
 - ADJUSTMENTS TO PROPOSED CROSSFALL, WHERE REQUIRED, ARE TO BE DETERMINED BY CONTRACT ADMINISTRATOR TO SUIT EXISTING DRIVEWAYS, APPROACHES, ETC.
 - ALL LAND DRAINAGE SEWER EXCAVATIONS TO BE JETTED, FLOODED AND TAMPED AS PER CW2030-R7



TYPICAL ALLEY CROSS SECTION
N.T.S.



TYPICAL TEE APRON TIE-IN DETAIL
N.T.S.

"Description of property limits, and existing and/or proposed features relative to these limits as shown on this drawing do not represent a Legal Survey. WSP makes no representation or guarantee that the property limit information is accurate. WSP accepts no responsibility for damages, if any, suffered by any third party as a result of decisions made or actions based on this drawing."

	WATERMAIN		M.T.S.		WATERMAIN
	HYDRANT		TRAFFIC SIGNAL		VALVE
	VALVE		CONCRETE/ASPHALT		LAND DRAINAGE SEWER
	CURB STOP		SIDEWALK		WASTE WATER SEWER
	WASTE WATER SEWER		CURB RAMP		CENTERLINE
	LAND DRAINAGE SEWER		PROPERTY LINE		SOUTH & EAST GUTTER
	C.B. LEAD		ELEVATIONS		NORTH & WEST GUTTER
	MANHOLE		TEST HOLE LOCATION		S. & E. PAD/GARG.
	CATCH BASIN		GAS		N. & W. PAD/GARG.
	HYDRO				
EXISTING	LEGEND - PLAN	PROPOSED	EXISTING	LEGEND - PLAN	PROPOSED
			EXISTING	LEGEND - PROFILE	PROPOSED

LOCATION APPROVED UNDERGROUND STRUCTURES			
SUPV. U/G STRUCTURES COMMITTEE	DATE	B.M. ELEV.	
NOTE:			
LOCATION OF UNDERGROUND STRUCTURES AS SHOWN ARE BASED ON THE BEST INFORMATION AVAILABLE BUT NO GUARANTEE IS GIVEN THAT ALL EXISTING UTILITIES ARE SHOWN OR THAT THE GIVEN LOCATIONS ARE EXACT. CONFIRMATION OF EXISTENCE AND EXACT LOCATION OF ALL SERVICES MUST BE OBTAINED FROM THE INDIVIDUAL UTILITIES BEFORE PROCEEDING WITH CONSTRUCTION.			
NO.	REVISIONS	DATE	BY
2	ISSUE FOR TENDER	2016/05/24	R.H.
1	COV REVIEW	MM/16	K.C.

WSP
 1600 BUFFALO PLACE
 WINNIPEG, MB, R3T 6B8
 PHONE: 204-477-6650
 FAX: 204-474-2864
 WWW.WSPGROUP.COM

DESIGNED BY	M.B.S.	CHECKED BY	R.H.
DRAWN BY	M.B.S.	APPROVED BY	I.McK.
HOR. SCALE:	1:250	RELEASED FOR CONSTRUCTION	
VERT. SCALE:	1:25	DATE	APRIL 2016

ENGINEERS SEAL
CONSULTANT DRAWING NO.
141-24150-00-64

THE CITY OF WINNIPEG
 PUBLIC WORKS DEPARTMENT

2016 LOCAL IMPROVEMENTS - CONTRACT 3
 WINGHAM AVENUE / BAYFIELD AVENUE LANE
 FROM ST. ANNE'S ROAD TO CLAYTON DRIVE
 ASPHALT PAVEMENT

CITY DRAWING NO.	
SHEET 1 OF 2	
388-2016	

APEGM
 Certificate of Authorization
 WSP Canada Inc.
 No. 5750 Date: Month DD, YYYY