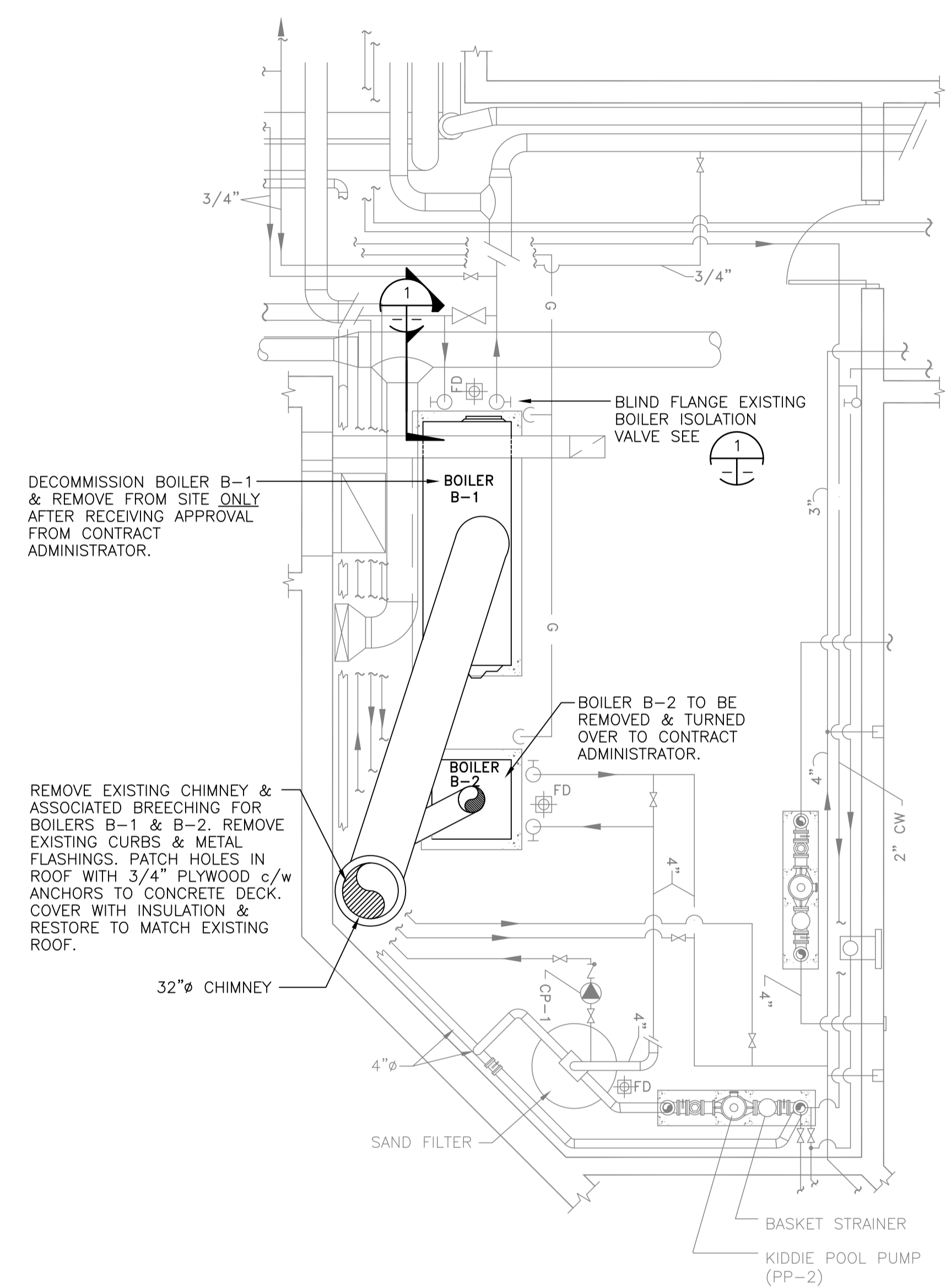
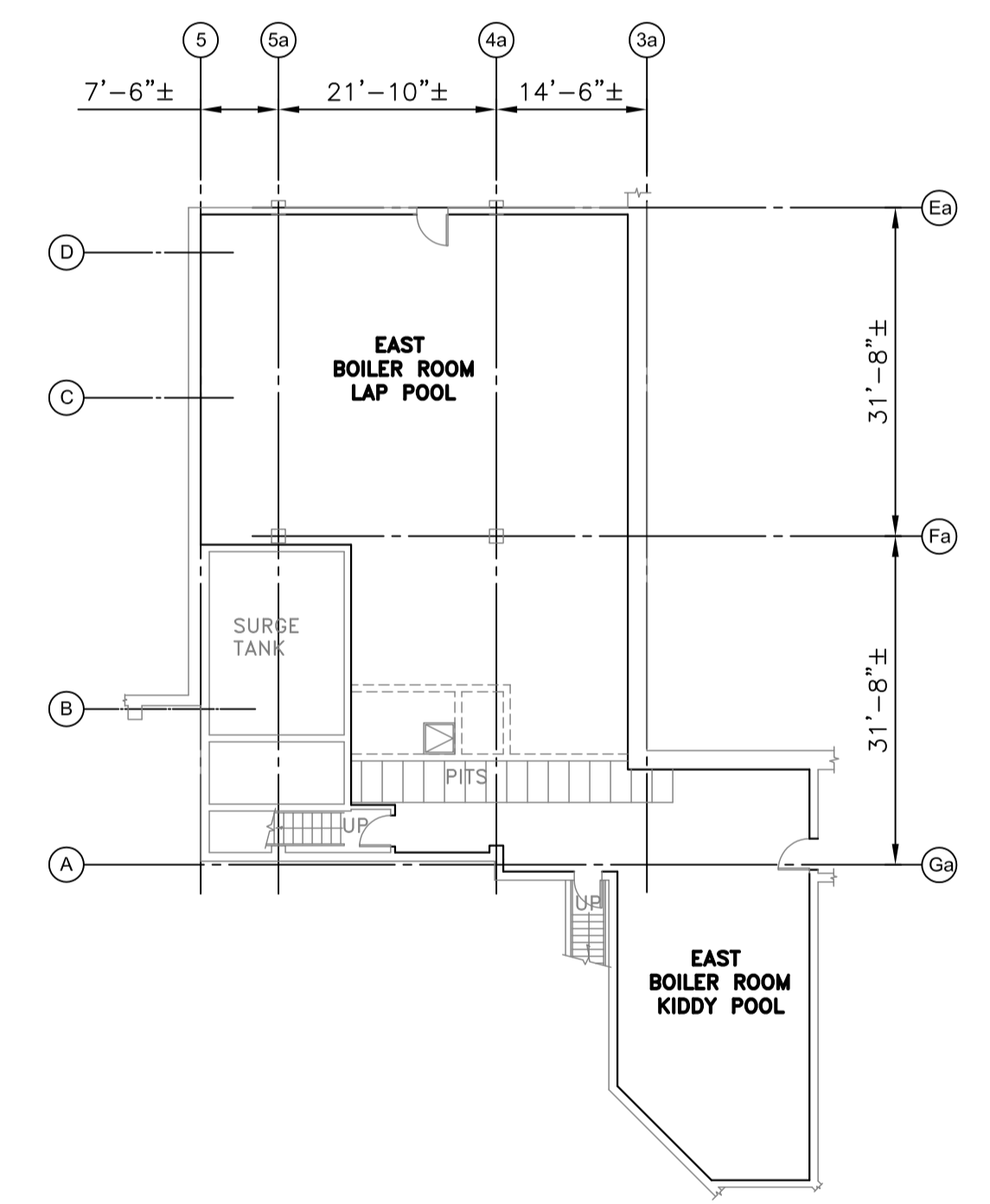
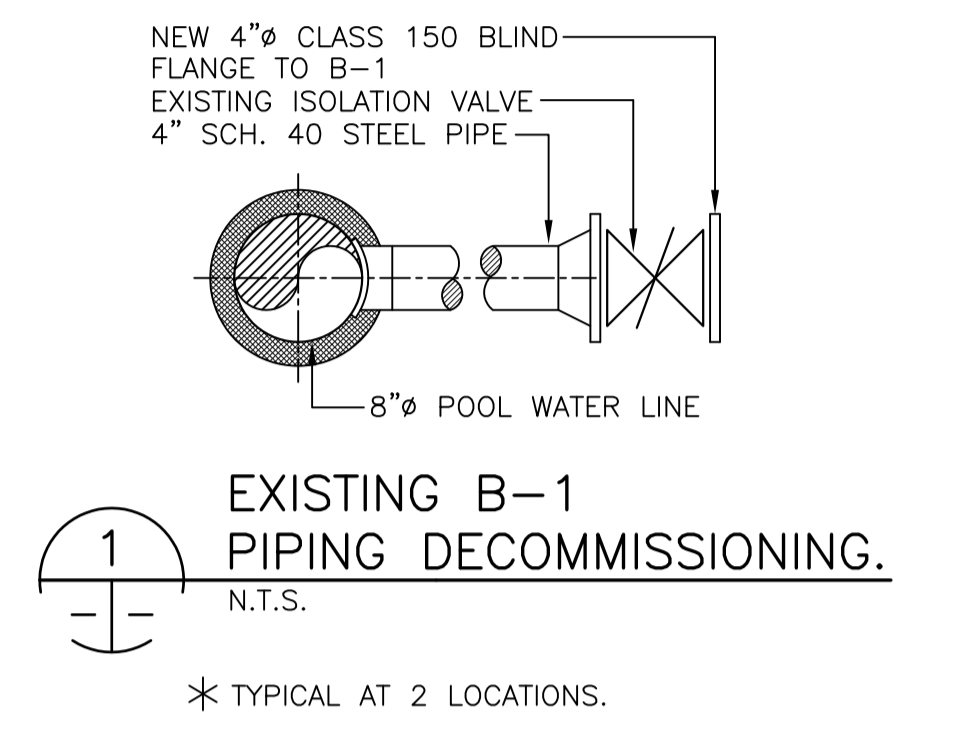


**A**  
DEMOLITION PLAN  
EAST BOILER ROOM (LAP POOL)  
1/4"=1'-0"



**B**  
DEMOLITION PLAN  
EAST BOILER ROOM (KIDDY POOL)  
1/4"=1'-0"



**C**  
MECHANICAL ROOM KEY PLAN  
N.T.S.

Record Drawings

These Record Drawings have been prepared utilizing the mark-up documents provided by the contractor. Accutech Engineering Inc has undertaken no independent verification of the information. The responsibility for the accuracy of the Record information rests with the contractor supplying the information.

REV.	DESCRIPTION	DWN.	APP.	DATE
3	AS BUILT DRAWING	FT	BKW	05/31/02
2	ISSUED FOR CONSTRUCTION	FT	BKW	02/01/02
1	ISSUED FOR TENDER	FT	BKW	01/25/02
0	ISSUED FOR CLIENT REVIEW	FT	BKW	01/24/02

<b>ACCUTECH</b> Engineering 605-287 Broadway, Winnipeg, Manitoba, Canada R3C 0R9	
APPROVED BY: FT	DATE: _____
DRAWN BY: FT	DESIGNED BY: BKW
CHECKED BY: BKW	CHECKED BY: BKW
SCALE: AS NOTED	JOB No. _____

<b>CITY OF WINNIPEG</b>	
PAN AM POOL MECHANICAL RENOVATIONS	
EAST BOILER ROOM DEMOLITION PLAN	<b>AM05</b> <b>3</b>
WINNIPEG	MANITOBA

88/21/02

\*\*\* DWG