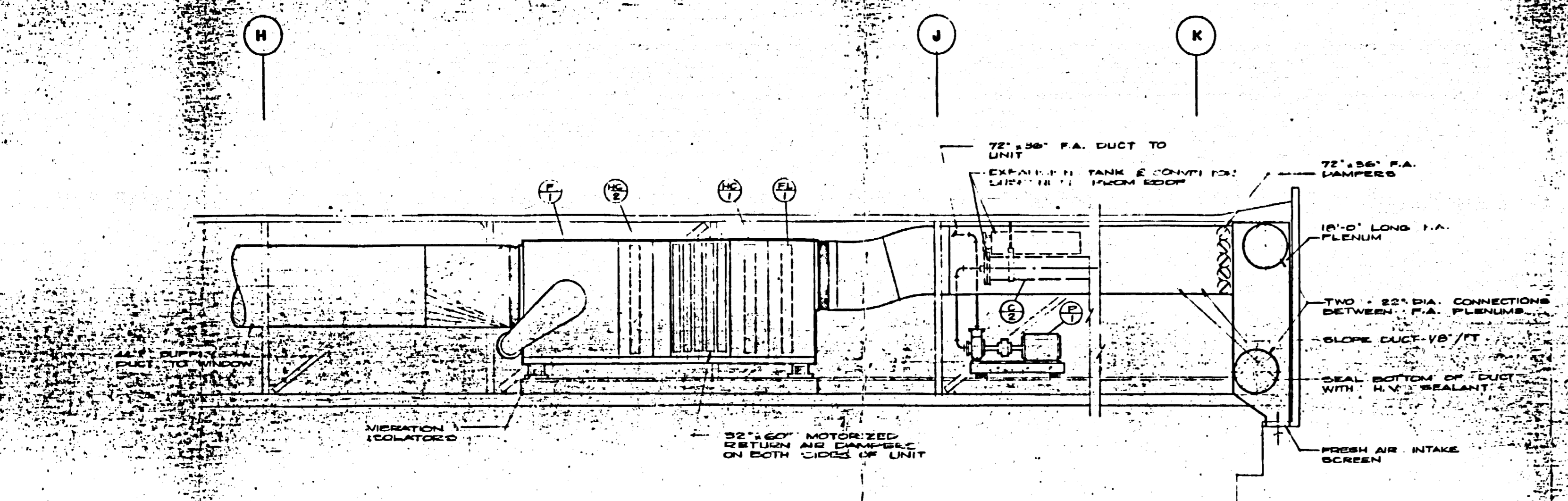
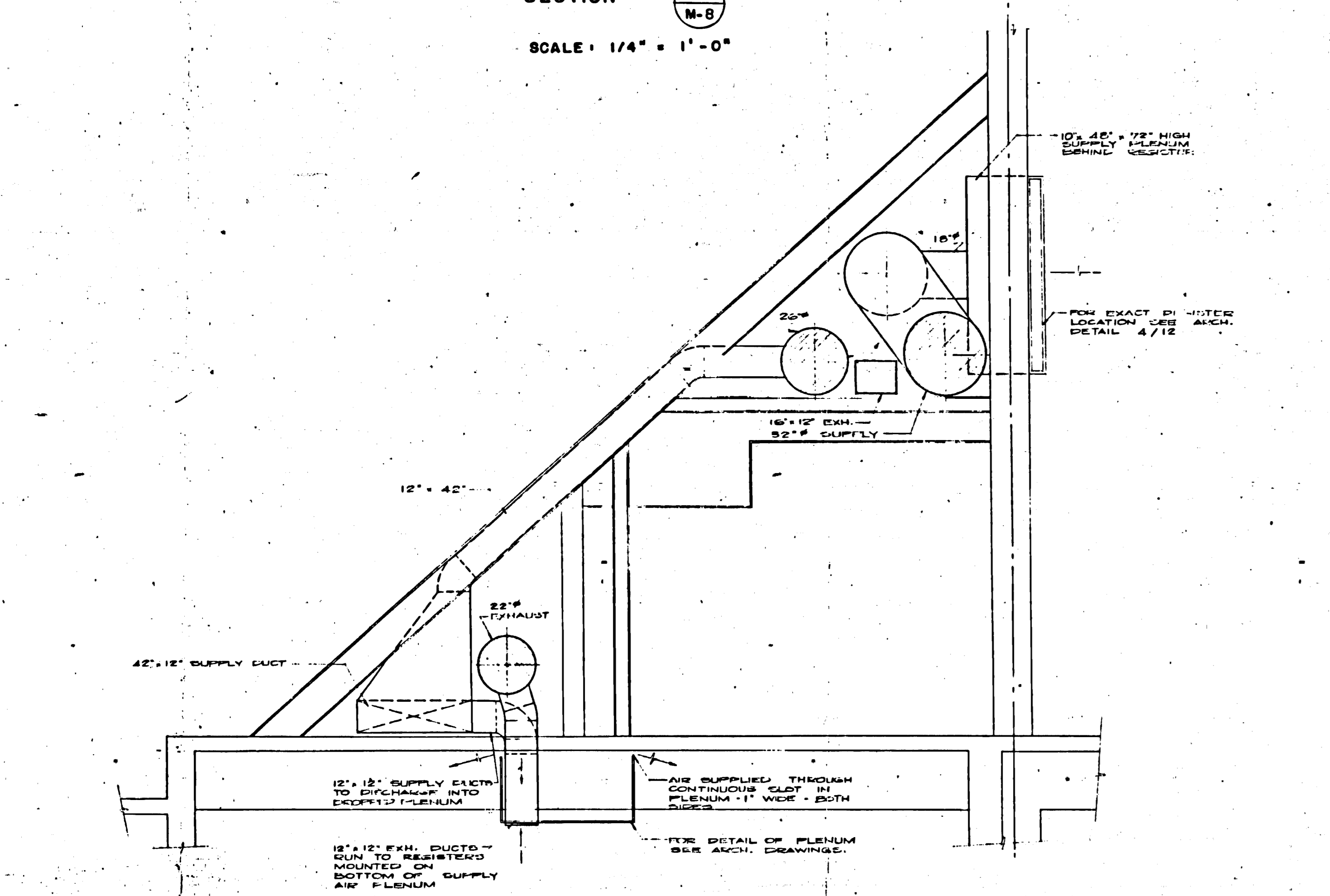


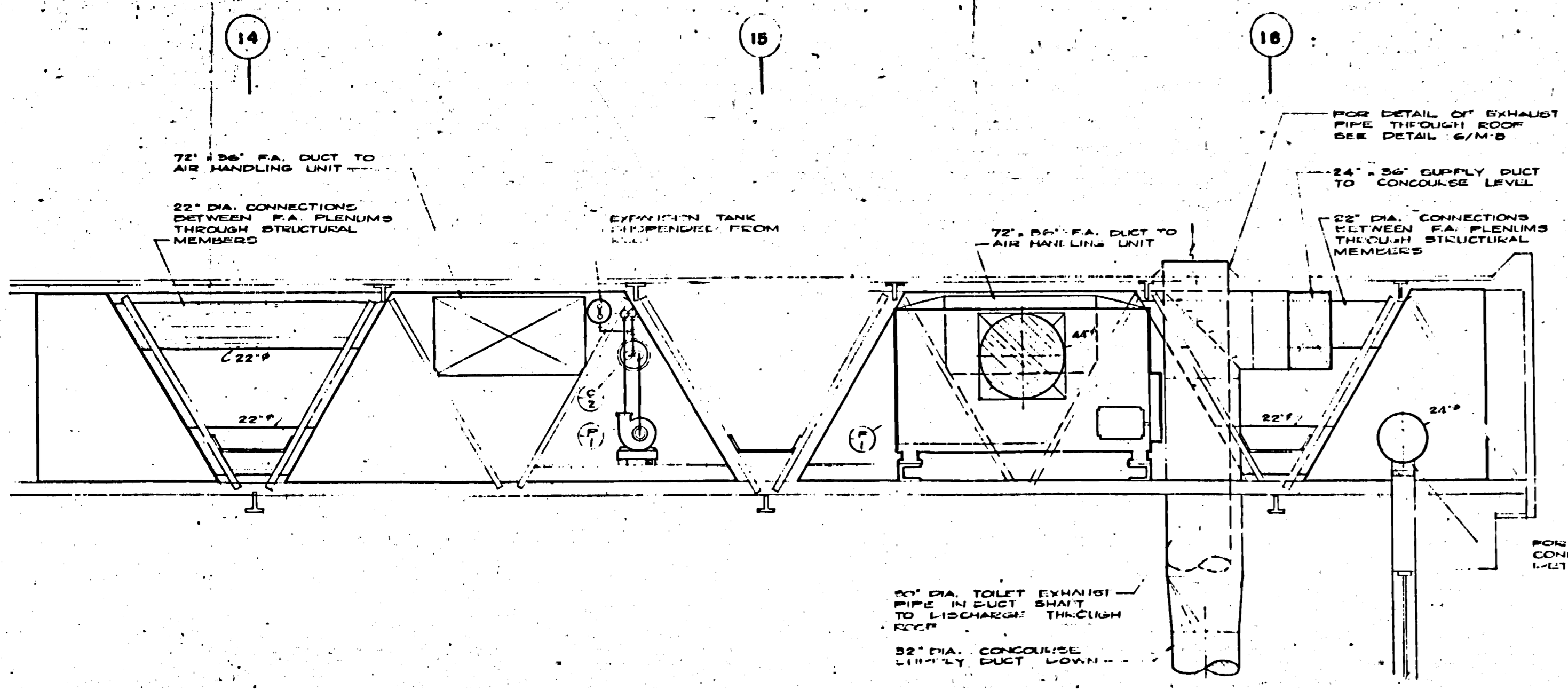
MECHANICAL DETAILS



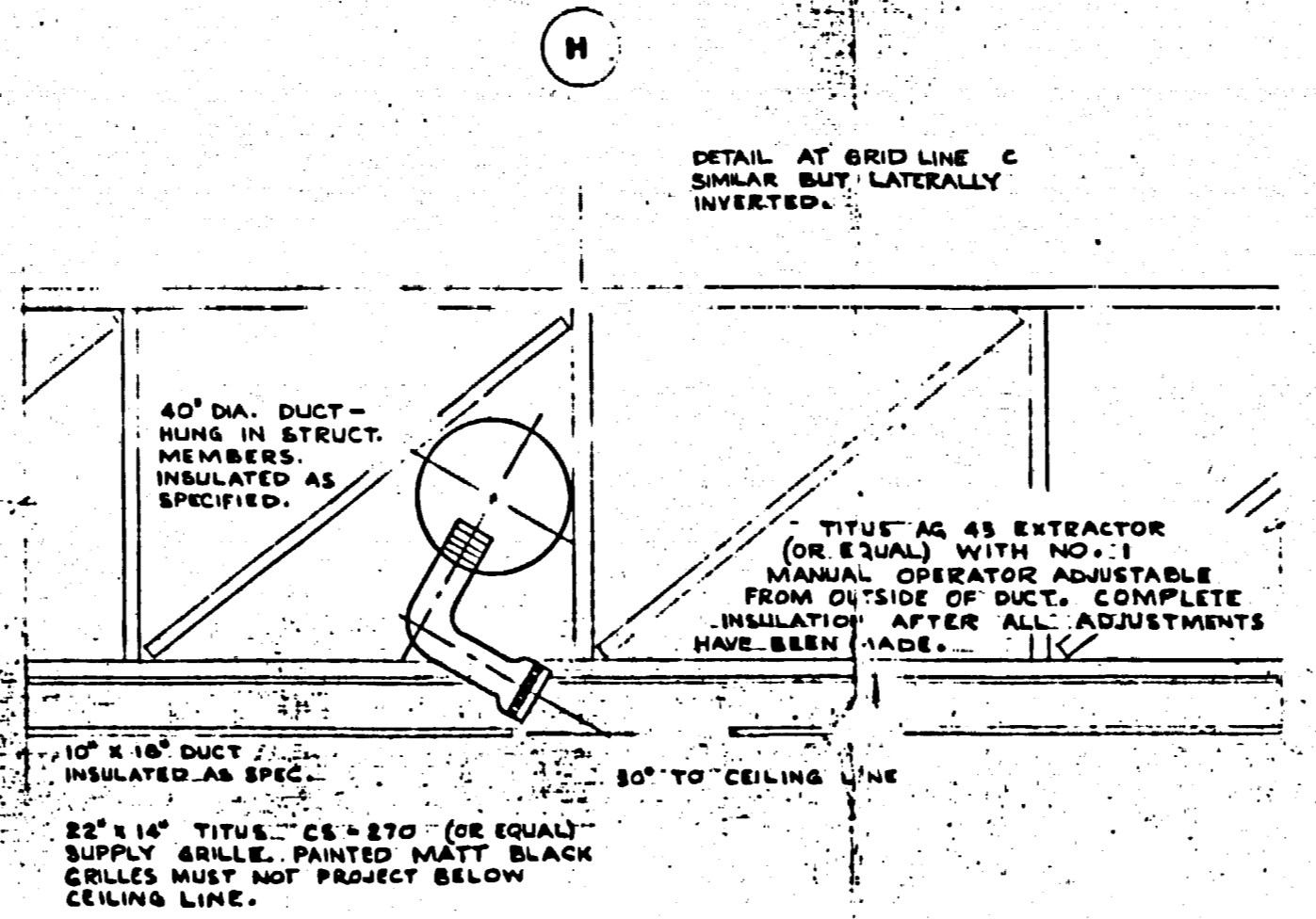
SECTION 1
M-B
SCALE: 1/4" = 1'-0"



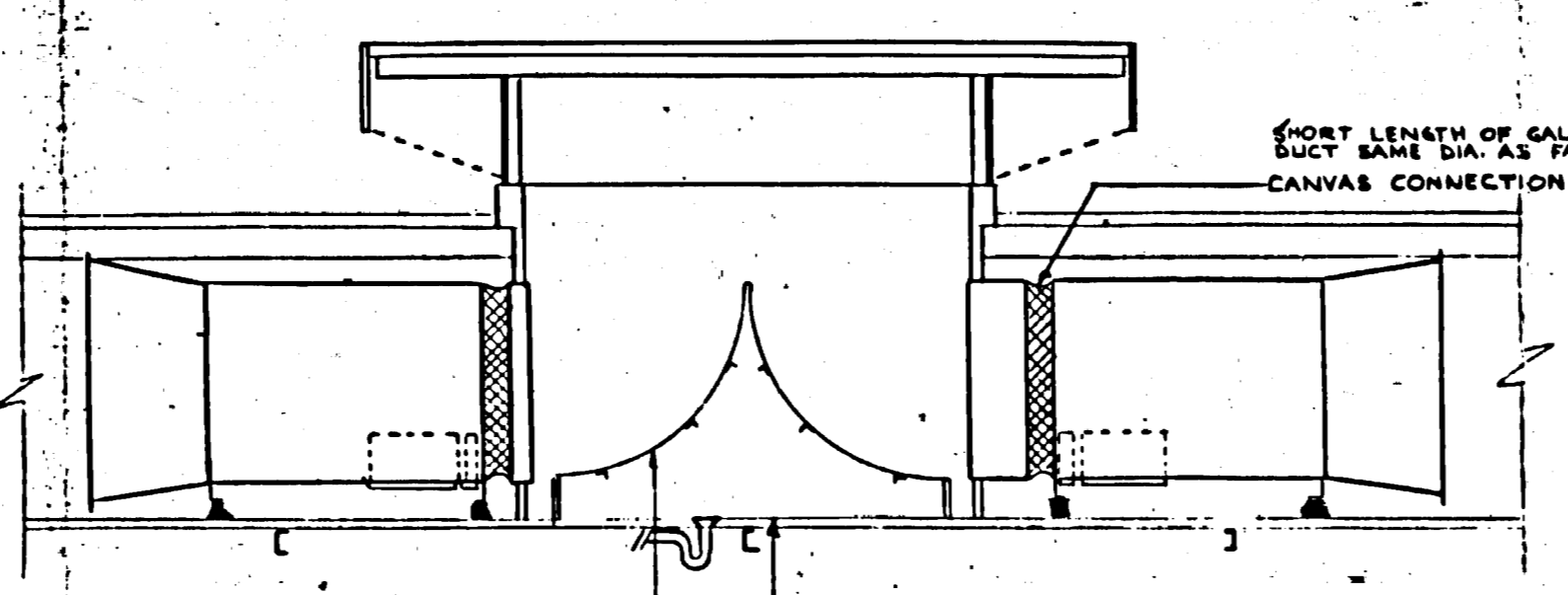
SECTION 2
M-B
SCALE: 3/8" = 1'-0"



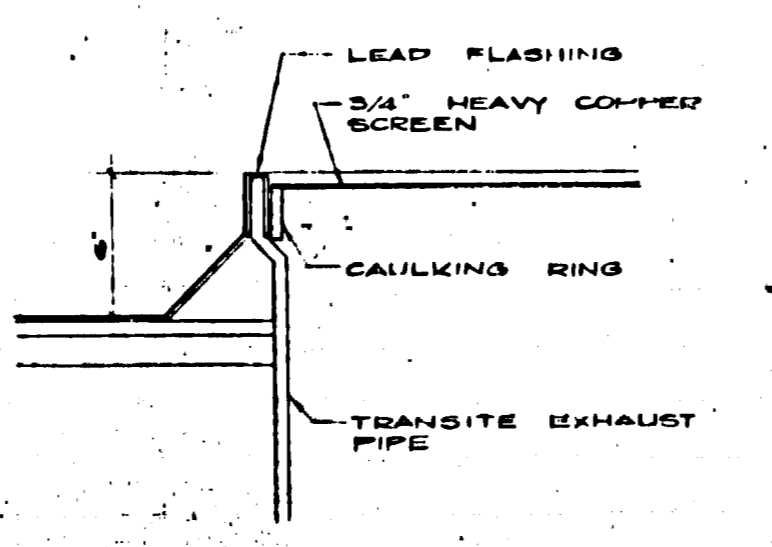
SECTION 3
M-B
SCALE: 1/4" = 1'-0"



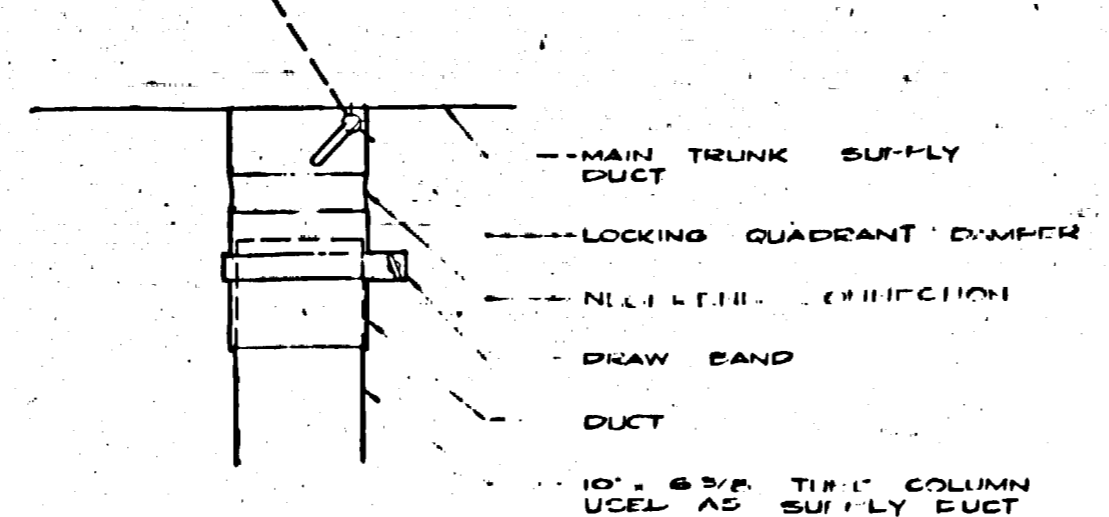
DETAIL 4
M-B
SCALE: 1/4" = 1'-0"



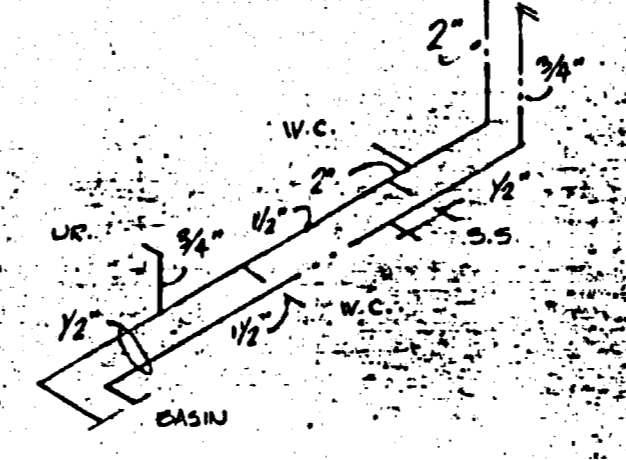
SECTION 5
M-B
SCALE: 1/4" = 1'-0"



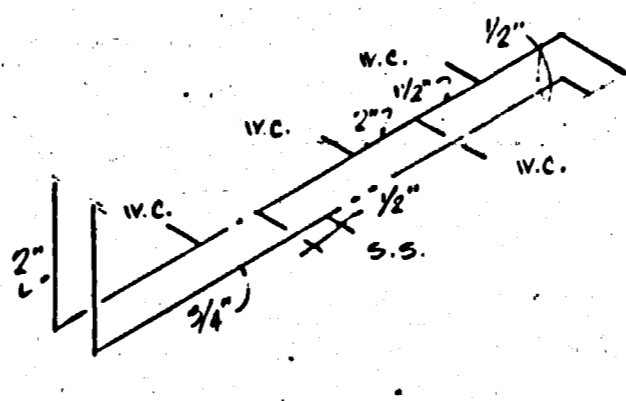
DETAIL OF EXHAUST PIPE THROUGH ROOF
M-B
N.T.S.



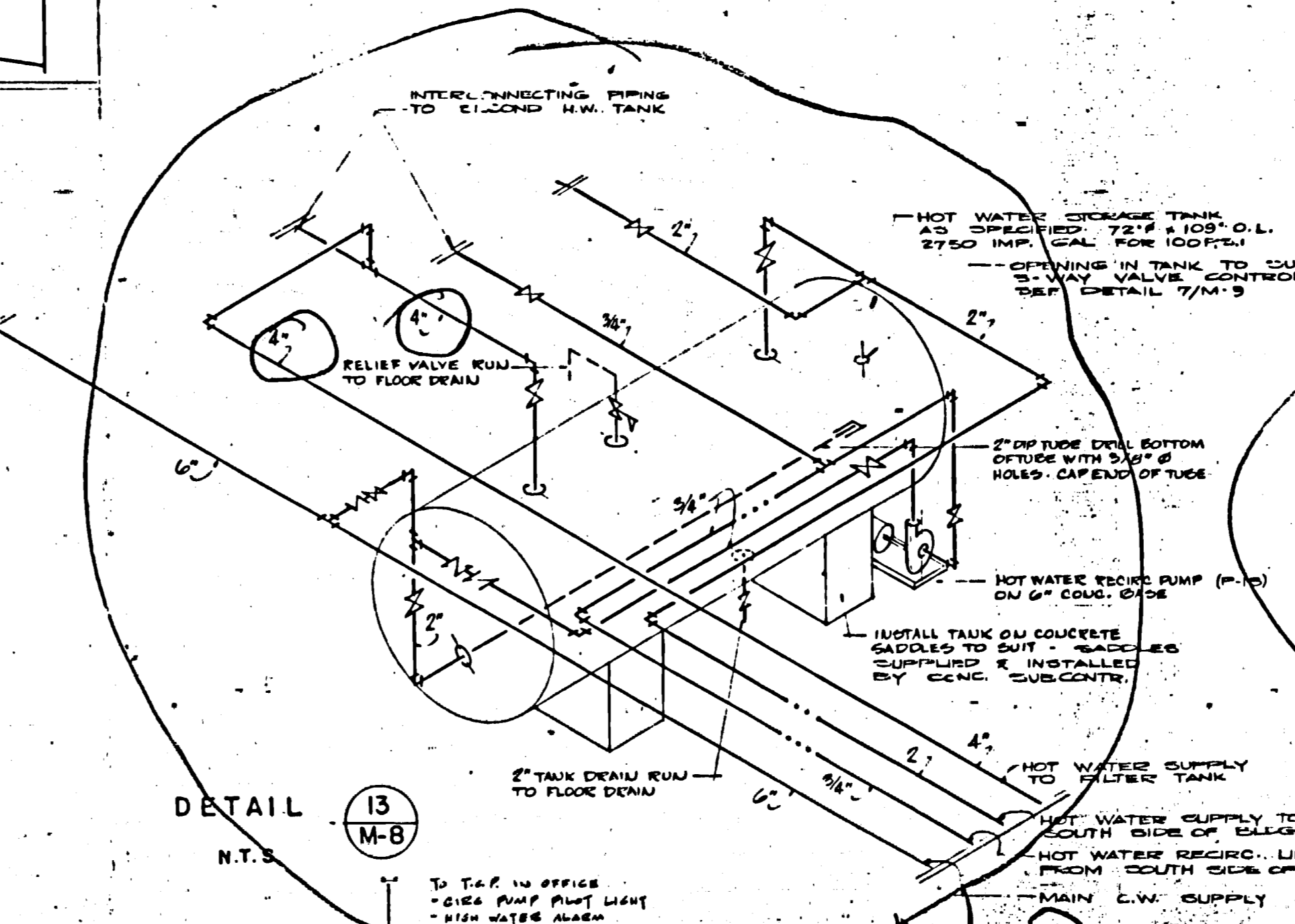
DETAIL OF COLUMN DUCT CONNECTION
M-B
N.T.S.



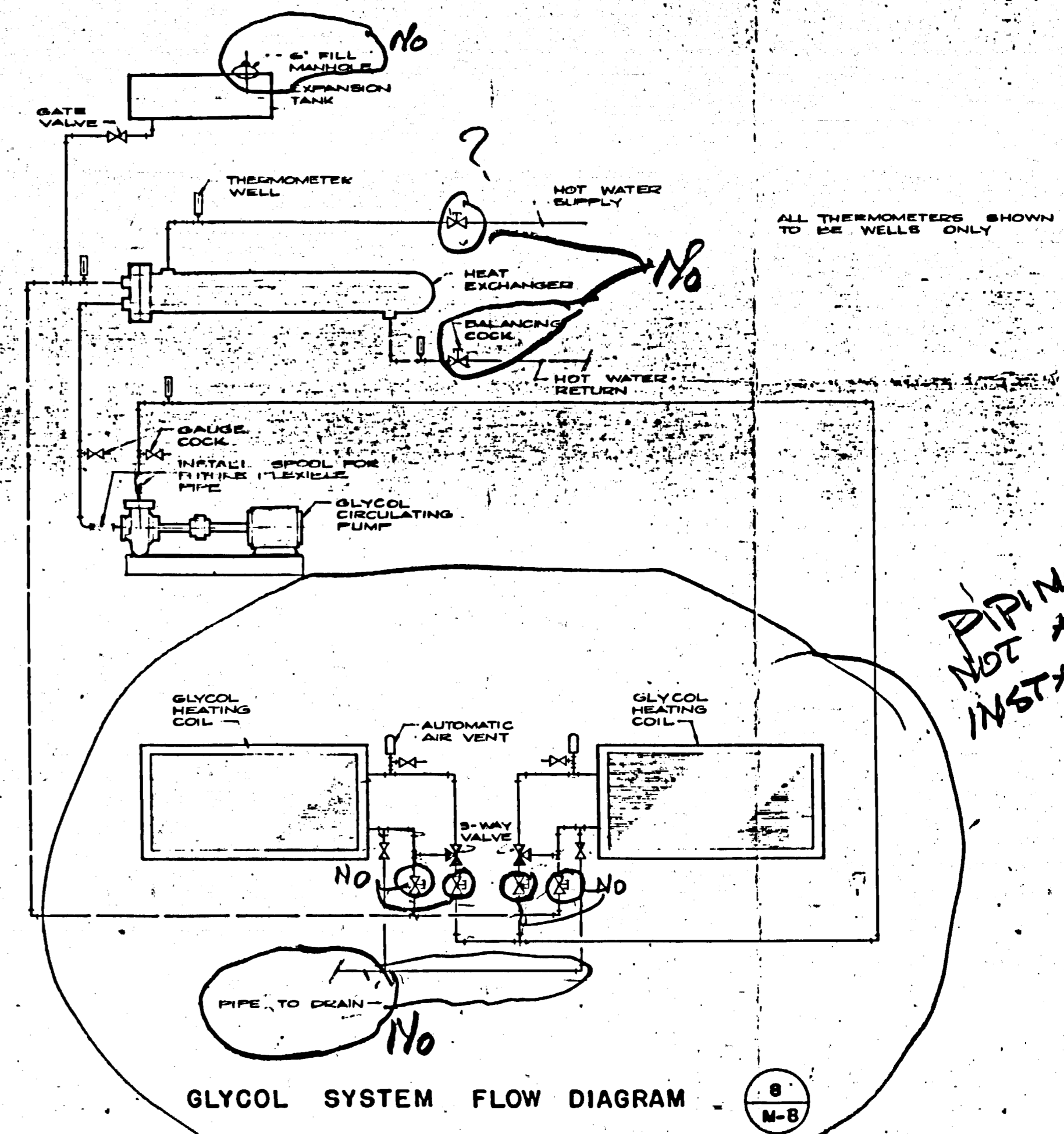
DETAIL 11
M-B
N.T.S.



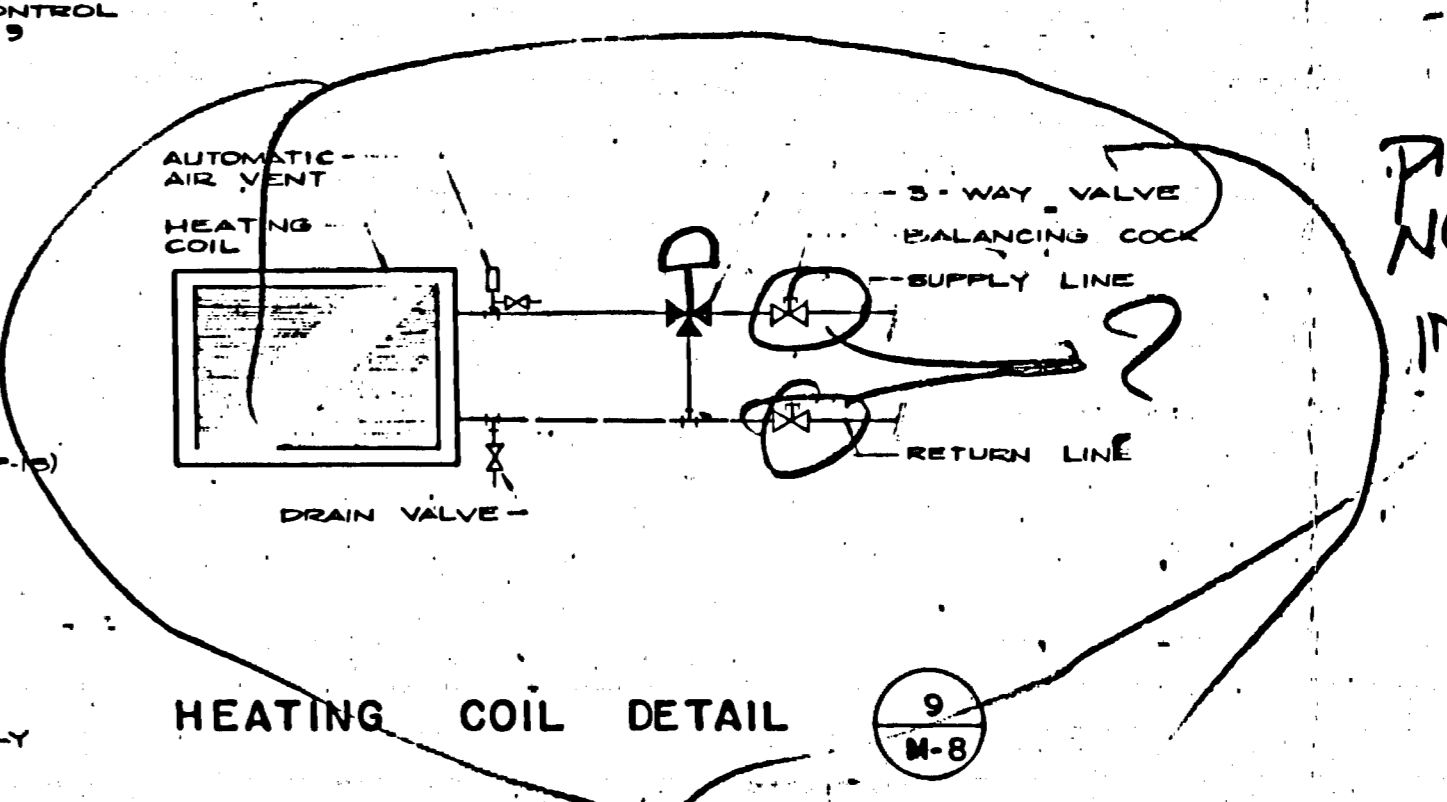
DETAIL 12
M-B
N.T.S.



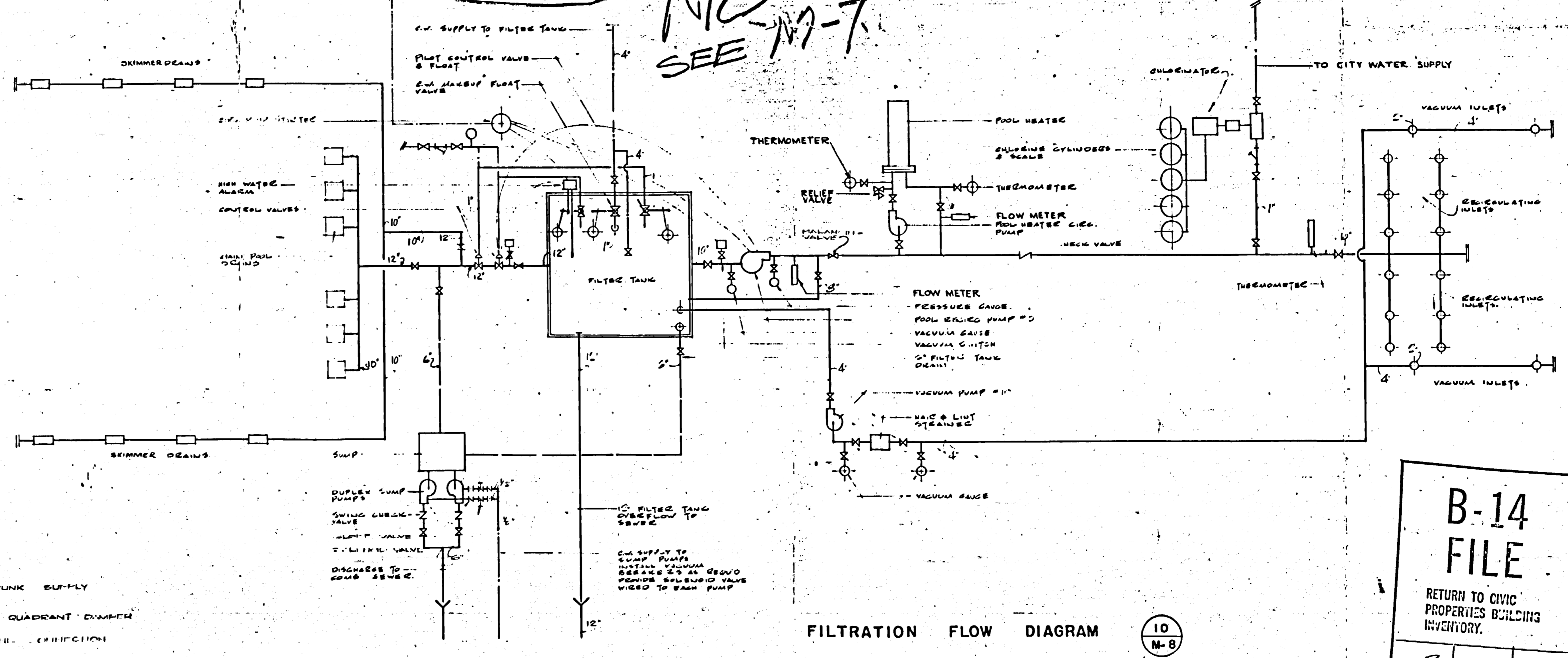
DETAIL 13
M-B
N.T.S.



GLYCOL SYSTEM FLOW DIAGRAM
M-B



HEATING COIL DETAIL
M-B



FILTRATION FLOW DIAGRAM
M-B

B-14
FILE
RETURN TO CIVIC
PROPERTIES BUILDING
INVENTORY.
3016

PIPING NOT AS INSTALLED

PIPING NOT AS INSTALLED

NO SEE 17-7

NO.	REV.	DESCRIPTION	DATE	CHKD.
REVISIONS (PENG UP)				

DRAWN BY: J.S. I.C.C.
 CHECKED BY: [Signature]
 APPROVED BY: [Signature]
 DATE:

PROVINCE OF MANITOBA
 G. H. CURRIE
 REGISTERED ENGINEER

PROVINCE OF MANITOBA
 SMITH CARTER SEARLE
 REGISTERED ARCHITECTS

SMITH CARTER SEARLE ASSOCIATES
ARCHITECTS AND CONSULTING ENGINEERS
WINNIPEG BRANDON PORT ARTHUR TORONTO



PAN-AMERICAN GAMES
SWIMMING FACILITY
WINNIPEG, MANITOBA

MECHANICAL DETAILS

AS SHOWN
 NO. 65080
 SHEET 7
 M-8

AS-BUILT DRAWING
 THIS DRAWING HAS BEEN REVISED
 TO SHOW THIS BUILDING AS-BUILT