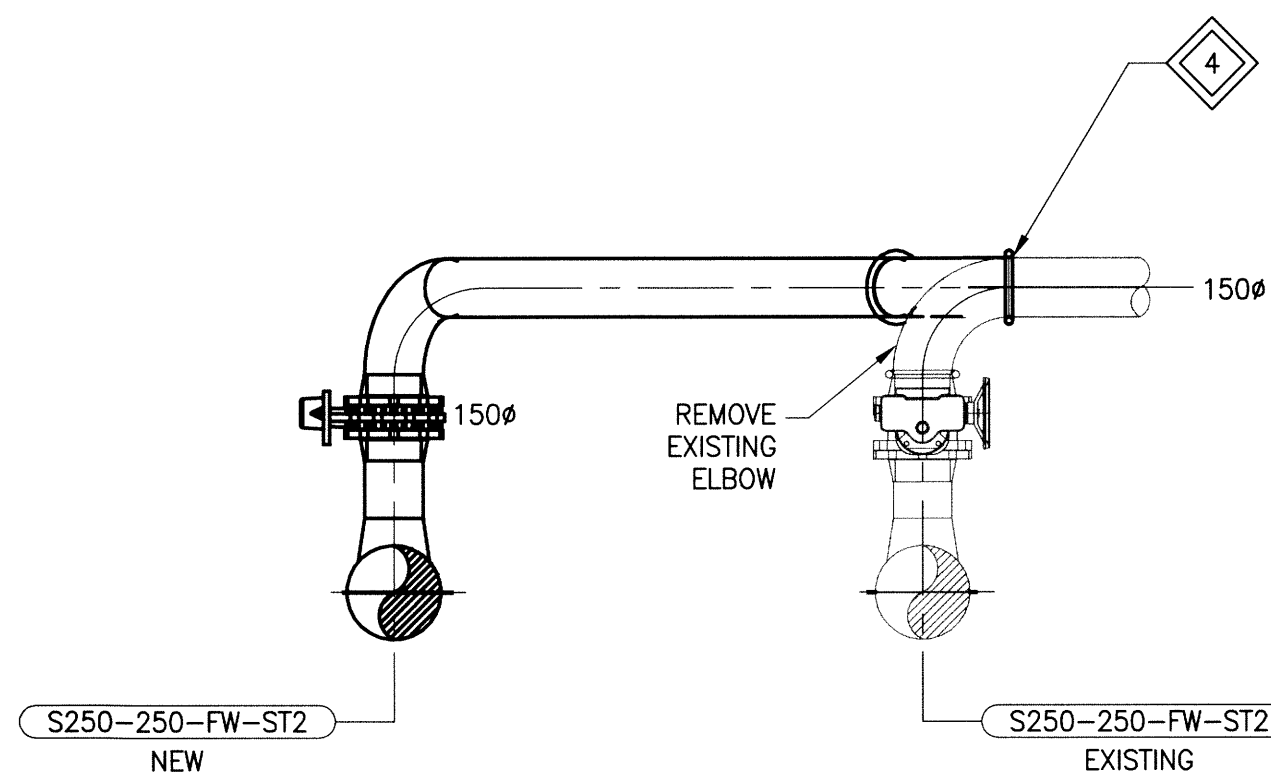


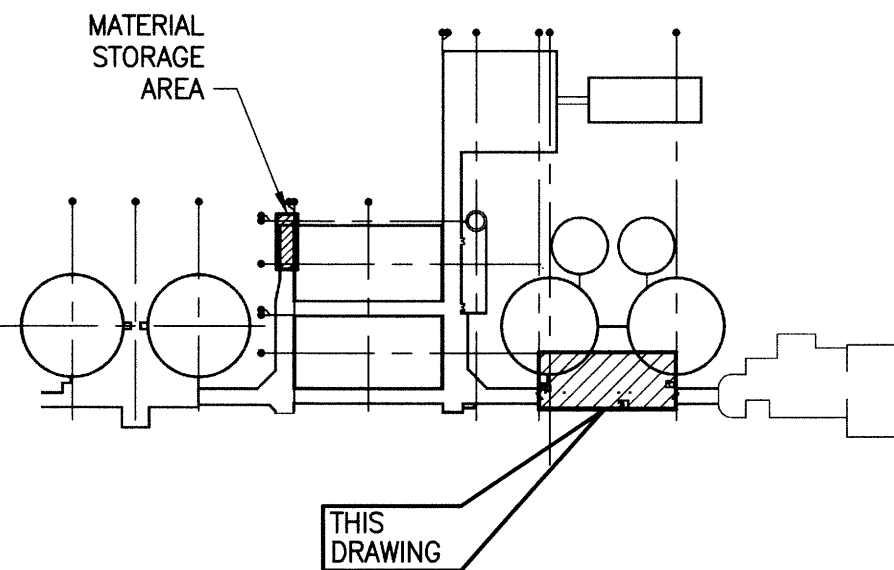
4 PART PLAN - PRIMARY PUMP ROOM LOWER LEVEL

SCALE: 1:75mm (METRIC A1)



A SECTION

SCALE: 1:20mm (METRIC A1)



KEYPLAN: N.T.S.

GENERAL NOTES:

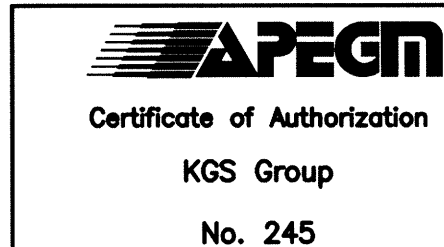
1. REFER TO DRAWING M14 FOR GENERAL NOTES.

KEYNOTES:

- 1 CONNECT TO EXISTING 38mm LINE TO FW HOSE STATION.
- 2 CONNECT TO EXISTING 65mm FW LINE UPSTREAM OF PRESSURE REGULATING VALVE.
- 3 CONNECT TO EXISTING 38mm FW LINE.
- 4 CONNECT TO EXISTING 150mm FW LINE AT GROOVED COUPLING.
- 5 NEW 250mm FW HEADER TO BE INSTALLED IN SAME LOCATION AS EXISTING HEADER AND EXISTING PIPE SUPPORTS TO BE REUSED FROM THIS POINT EASTWARD.
- 6 REMOVE EXISTING 250mm FW HEADER AND SEAL WALL PENETRATION WITH NON SHRINK GROUT.
- 7 PROVIDE NEW PENETRATION IN CONCRETE BLOCK WALL AND FIRESTOP.
- 8 ROUTE NEW LINE THROUGH EXISTING WALL PENETRATION AND FIRESTOP.
- 9 PROVIDE NEW PENETRATION IN CONCRETE BLOCK WALL FOR TEMPORARY PIPE AND FIRESTOP. FOLLOWING PIPE REMOVAL, SEAL OPENING WITH NON SHRINK GROUT, SIKAGROUT 212R.
- 10 NEW 250mm FW HEADER TO BE INSTALLED IN NEW LOCATION c/w NEW HANGER SUPPORTS FROM THIS POINT WESTWARD. SUPPORT PIPE EVERY 6m AT CONCENTRATED LOADS AND AT CHANGES IN DIRECTION.
- 11 PROVIDE SWAY BRACE ON NEW 250mm FW HEADER. REFER TO DWG. M15 FOR DETAILS.
- 12 INSTALL BLIND FLANGE ON VALVE FOLLOWING REMOVAL OF TEMPORARY LINE.
- 13 FIELD ROUTE TEMPORARY 100mm FW HEADER. SUPPORT ON NEW HANGERS EVERY 5m, AT CONCENTRATED LOADS, AND AT DIRECTION CHANGES.

METRIC

WHOLE NUMBERS INDICATE MILLIMETRES
DECIMALIZED NUMBERS INDICATE METRES



FIELD BOOK #	
POSTED TO LBIS	
0	ISSUED FOR CONSTRUCTION
ND.	REVISIONS
	DATE
	BY

KGS GROUP CONSULTING ENGINEERS	
DESIGNED BY	JS
CHECKED BY	MSK
DRAWN BY	JFS
APPROVED BY	JS
HDR. SCALE	AS NOTED
VERTICAL	AS NOTED
DATE	2016 02 22
DATE	2016-05-07

ENGINEER'S SEAL
M17

THE CITY OF WINNIPEG WATER AND WASTE DEPARTMENT	
WEWPC FW PIPE REPLACEMENT	SHEET 1 OF 1
MECHANICAL PRIMARY PUMP ROOM LOWER LEVEL FW PIPING - PLAN	CITY DRAWING NUMBER 1-0103S-M0039-001