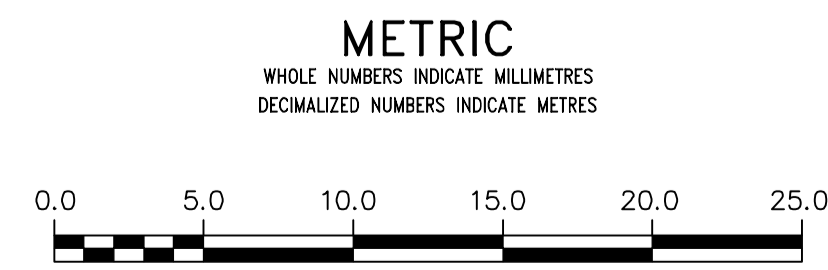
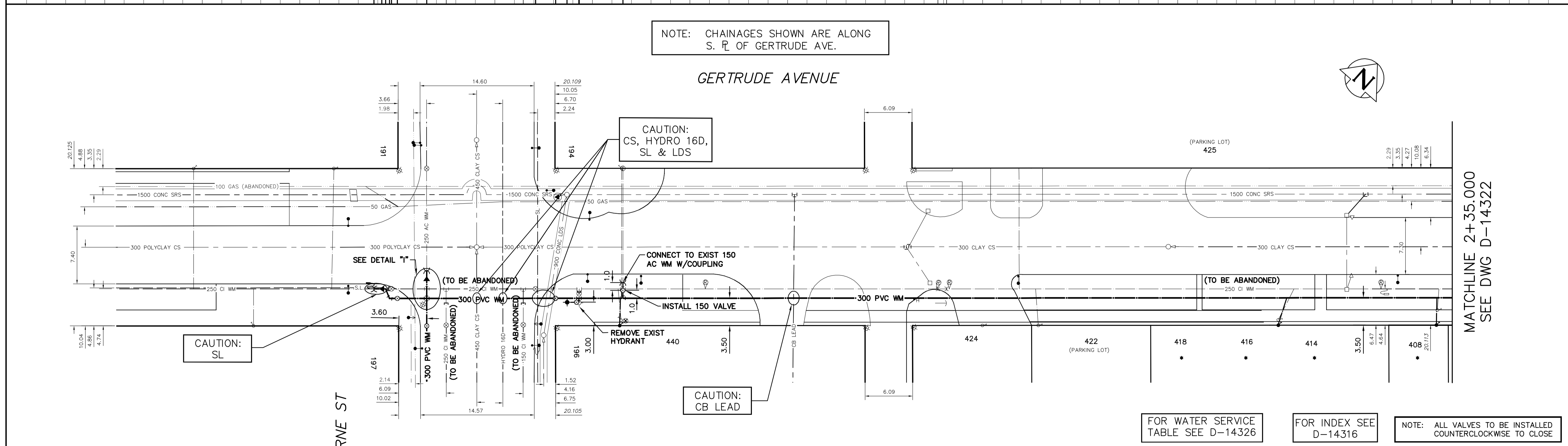


NOTE: CHAINAGES SHOWN ARE ALONG S. R. OF GERTRUDE AVE.



OSBORNE ST

WARNING
 IF POWER EQUIPMENT OR EXPLOSIVES ARE TO BE USED FOR EXCAVATION ON THIS PROJECT THE CONTRACTOR MUST:
 1) NOTIFY THE GAS COMPANY OF THE PROPOSED LOCATION OF EXCAVATION.
 2) TAKE PRECAUTION TO AVOID DAMAGE TO GAS COMPANY INSTALLATIONS.
 SEE PROVINCIAL REGULATION 210/72 FOR DETAILS

LOCATION APPROVED
 UNDERGROUND STRUCTURES
 SUPV. U/G STRUCTURES COMMITTEE DATE
 NOTE:
 LOCATION OF UNDERGROUND STRUCTURES AS SHOWN ARE BASED ON THE BEST INFORMATION AVAILABLE BUT NO GUARANTEE IS GIVEN THAT ALL EXISTING UTILITIES ARE SHOWN OR THAT THE GIVEN LOCATIONS ARE EXACT. CONFIRMATION OF EXISTENCE AND EXACT LOCATION OF ALL SERVICES MUST BE OBTAINED FROM THE INDIVIDUAL UTILITIES BEFORE PROCEEDING WITH CONSTRUCTION.

B.M. ELEV.		
DESIGNED BY	ML	CHECKED BY SC
DRAWN BY	RJ	APPROVED BY KZ
SCALE:	HORIZONTAL 1:250	VERTICAL 1:50
DATE	2016 05 19	DATE 2016 05 20
NO.	REVISIONS	DATE BY
PLOT DATE:	2016 05 19	

ENGINEER'S SEAL
 ORIGINAL SIGNED BY
 S.R.J. COURNOYER
 16-05-20
 CONSULTANT DRAWING NUMBER
 —
 STACY COURNOYER

FOR WATER SERVICE TABLE SEE D-14326

FOR INDEX SEE D-14316

NOTE: ALL VALVES TO BE INSTALLED COUNTERCLOCKWISE TO CLOSE

THE CITY OF WINNIPEG
 WATER AND WASTE DEPARTMENT
 ENGINEERING DIVISION
 2016 WATER MAIN RENEWALS
 CONTRACT 8
GERTRUDE AVENUE
 OSBORNE STREET TO
 115 E OSBORNE STREET

SHEET 6 OF 13
 CITY DRAWING NUMBER
 D-14321

MATCHLINE 2+35.000
SEE DWG D-14322