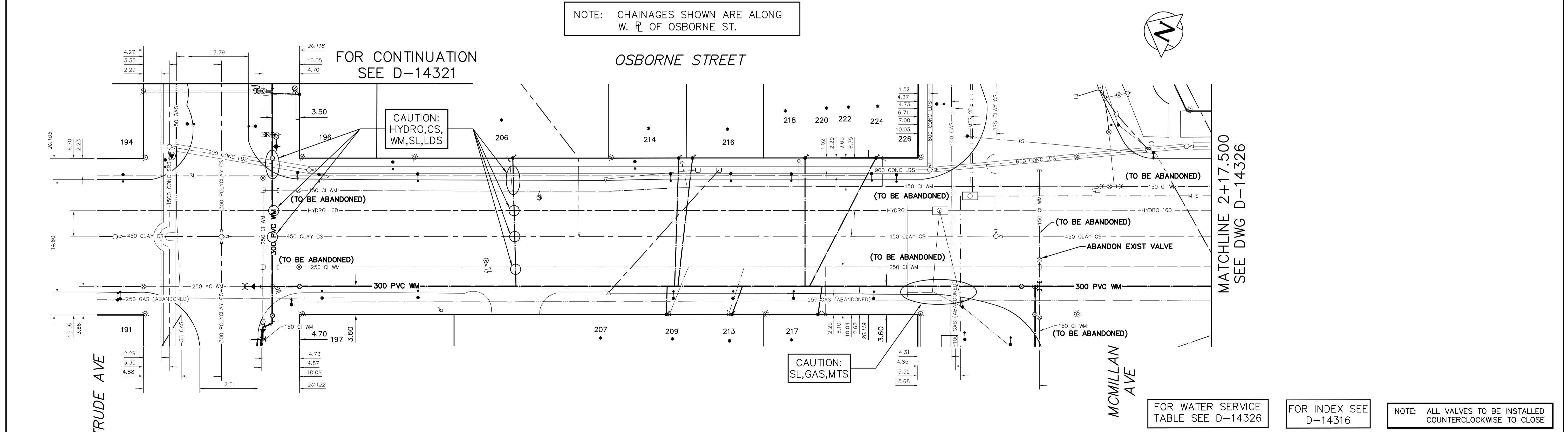
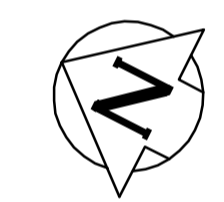


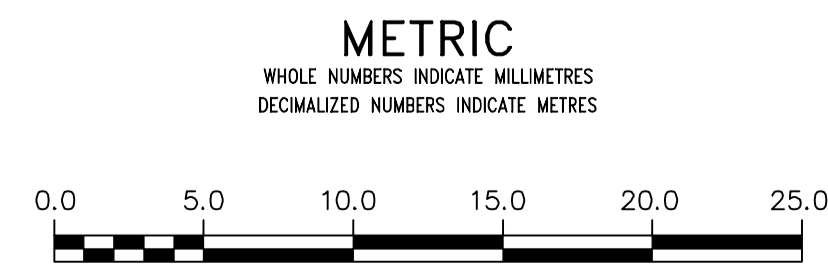
NOTE: CHAINAGES SHOWN ARE ALONG W. R. OF OSBORNE ST.



FOR WATER SERVICE TABLE SEE D-14326

FOR INDEX SEE D-14316

NOTE: ALL VALVES TO BE INSTALLED COUNTERCLOCKWISE TO CLOSE



WARNING
IF POWER EQUIPMENT OR EXPLOSIVES ARE TO BE USED FOR EXCAVATION ON THIS PROJECT THE CONTRACTOR MUST:
1) NOTIFY THE GAS COMPANY OF THE PROPOSED LOCATION OF EXCAVATION.
2) TAKE PRECAUTION TO AVOID DAMAGE TO GAS COMPANY INSTALLATIONS.
SEE PROVINCIAL REGULATION 210/72 FOR DETAILS

LOCATION APPROVED UNDERGROUND STRUCTURES
SUPV. U/G STRUCTURES COMMITTEE DATE
NOTE: LOCATION OF UNDERGROUND STRUCTURES AS SHOWN ARE BASED ON THE BEST INFORMATION AVAILABLE BUT NO GUARANTEE IS GIVEN THAT ALL EXISTING UTILITIES ARE SHOWN OR THAT THE GIVEN LOCATIONS ARE EXACT. CONFIRMATION OF EXISTENCE AND EXACT LOCATION OF ALL SERVICES MUST BE OBTAINED FROM THE INDIVIDUAL UTILITIES BEFORE PROCEEDING WITH CONSTRUCTION.

DESIGNED BY		CHECKED BY	
JF		SC	
DRAWN BY		APPROVED BY	
RJ		KZ	
SCALE:		RELEASED FOR CONSTRUCTION	
HORIZONTAL 1:250		STACY COURNOYER	
VERTICAL 1:50		DATE 2016 05 20	
DATE		DATE	
2016 05 19		2016 05 20	
PLOT DATE:			
2016 05 19			

ENGINEER'S SEAL
ORIGINAL SIGNED BY S.R.J. COURNOYER 16-05-20
CONSULTANT DRAWING NUMBER: -

THE CITY OF WINNIPEG
WATER AND WASTE DEPARTMENT
ENGINEERING DIVISION
2016 WATER MAIN RENEWALS
CONTRACT 8
OSBORNE STREET
GERTRUDE AVENUE TO
38 E OF MCMILLAN AVENUE

SHEET 10 OF 13
CITY DRAWING NUMBER
D-14325