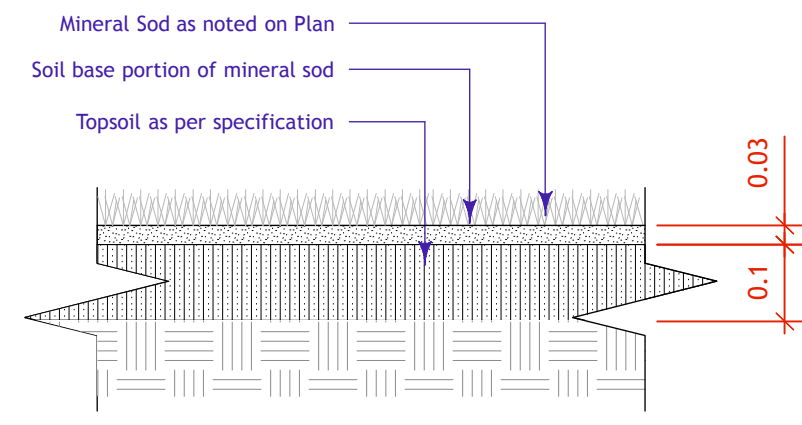
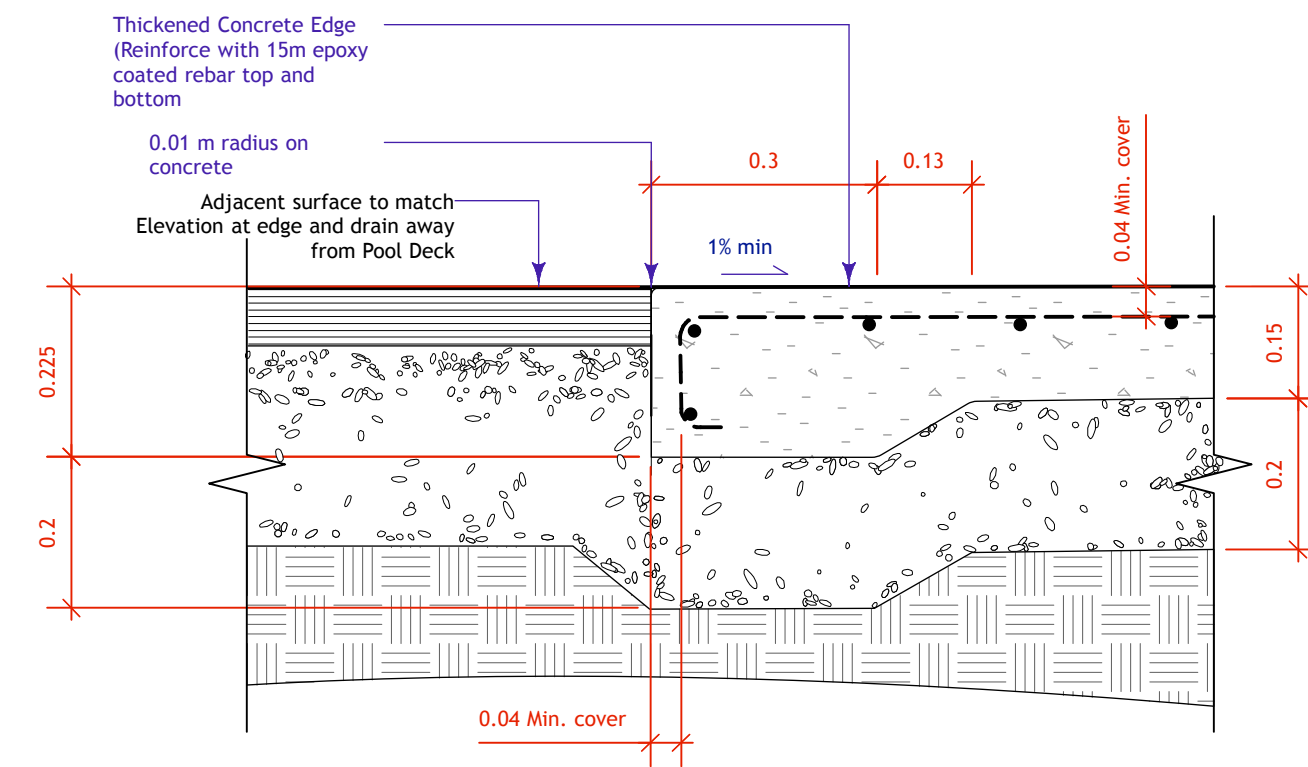


Concrete Notes

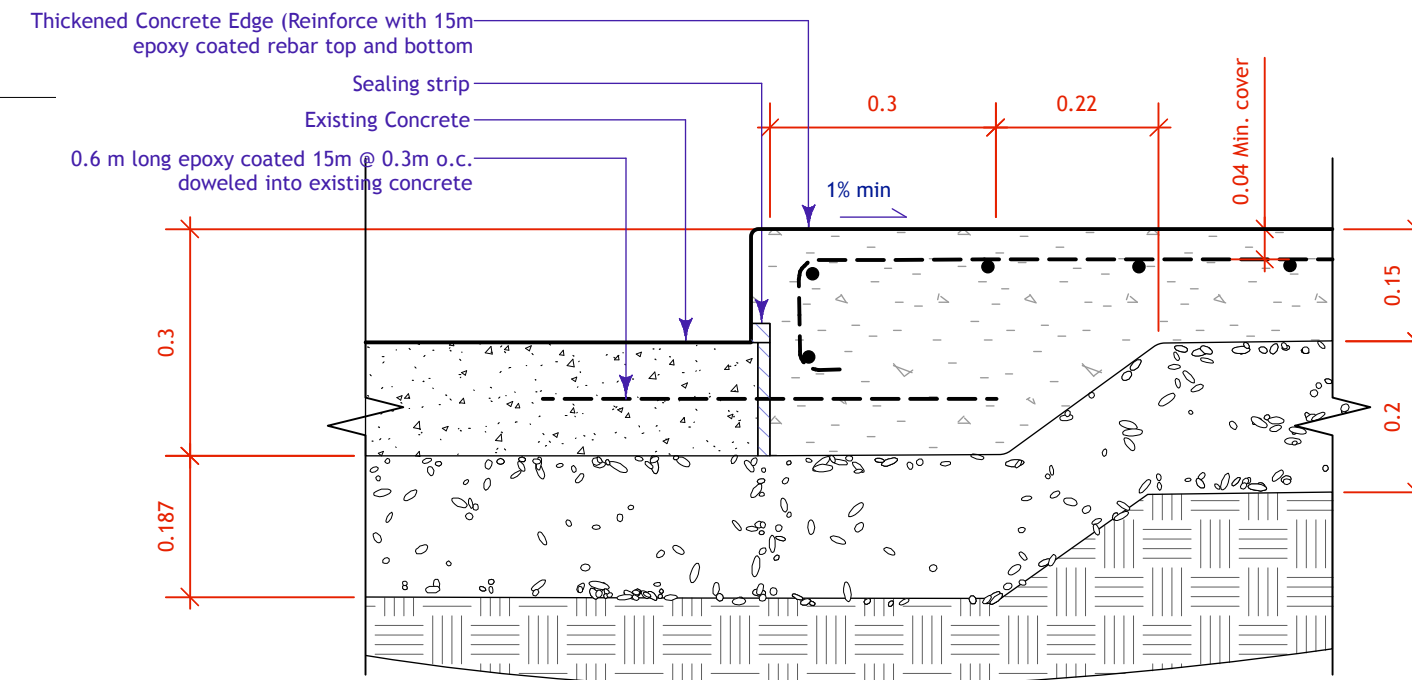
1. Contractor to provide shop drawings showing foundation and grounding details for pool toys stamped by a professional engineer registered to practice in Manitoba.
2. Concrete to be 32 mpa at 28 days
3. Maximum agg. size 19 mm
4. Air Entraining 6-9%
5. All reinforcing steel to be epoxy coated
6. Exposure Class F1
7. Contractor to provide density testing of the sub-base and the granular base course. Results of testing to be sent directly from the testing lab to the Contract Administrator.
8. Contractor to provide concrete testing as per CW Standard Specification



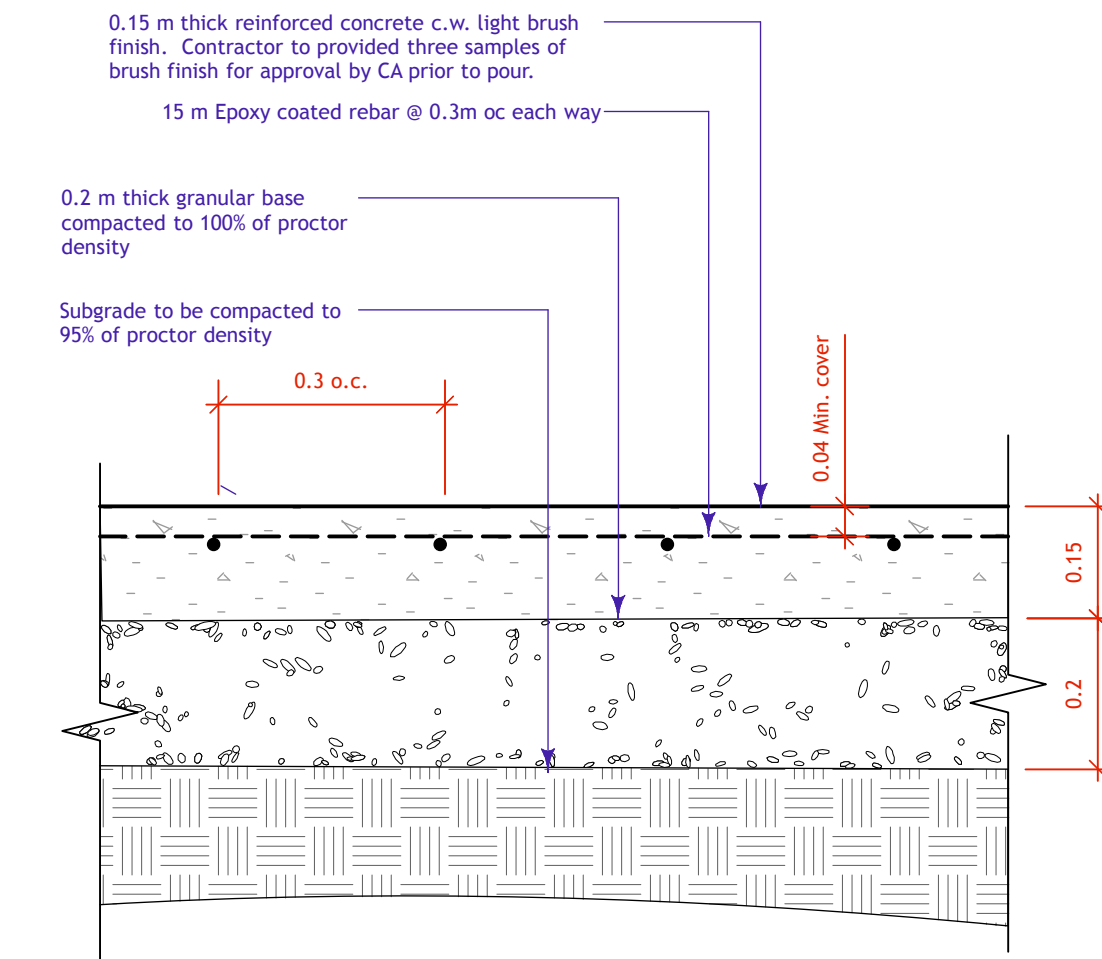
1 Sod Detail
L-3 Scale: 1:10



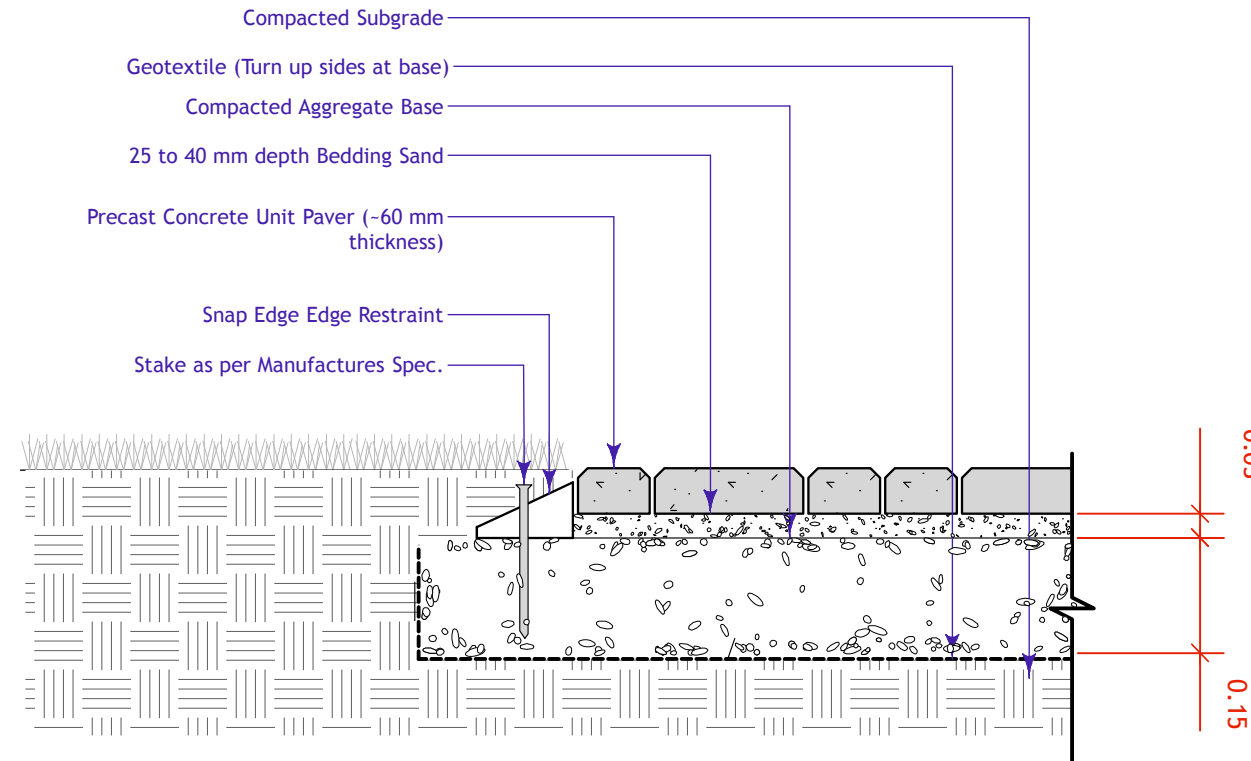
2 Pool Deck to Adjacent Surface
L-3 Scale: 1:10



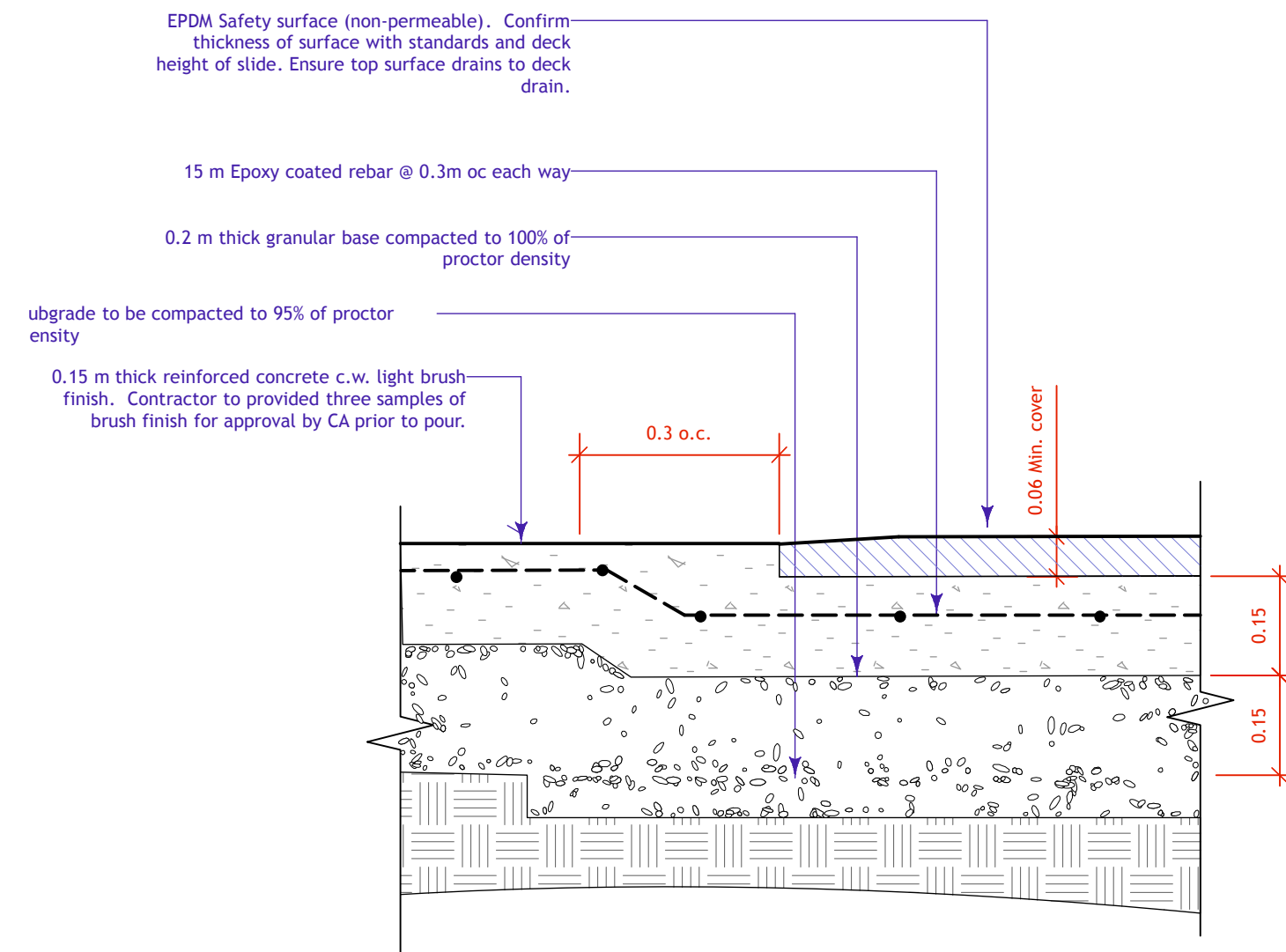
3 Pool Deck to Existing Basin
L-3 Scale: 1:10



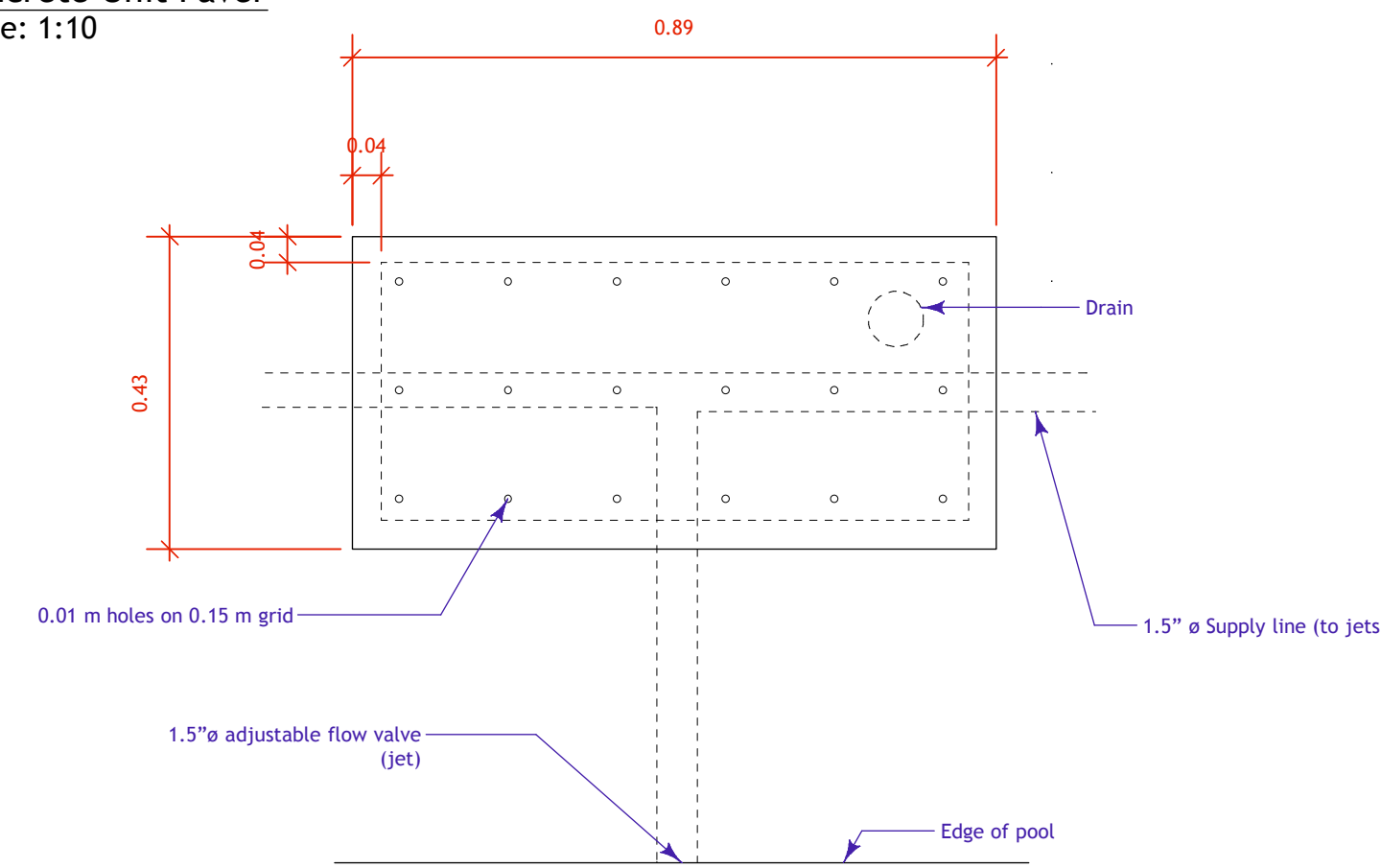
4 Pool Deck
L-3 Scale: 1:10



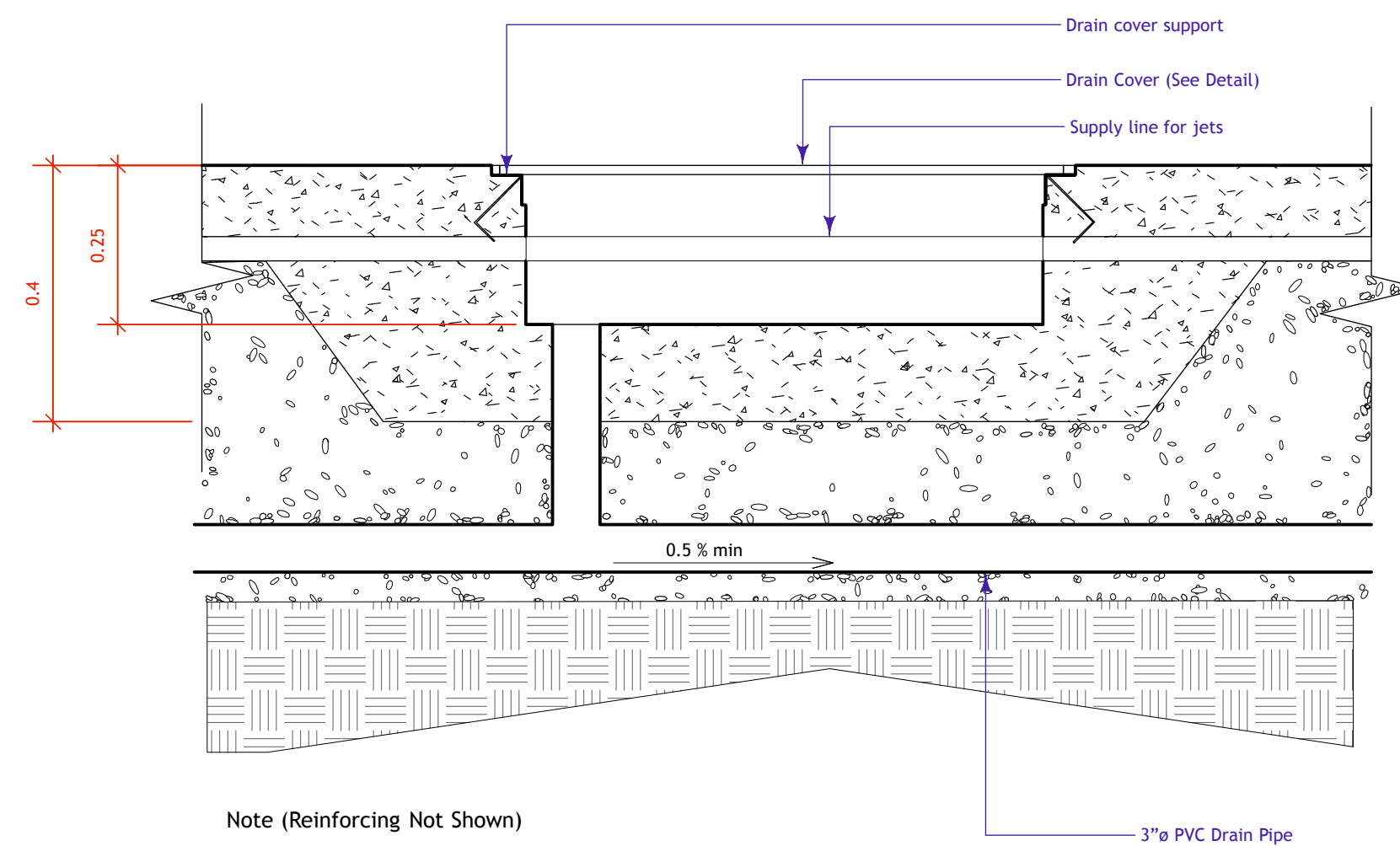
5 Concrete Unit Paver
L-3 Scale: 1:10



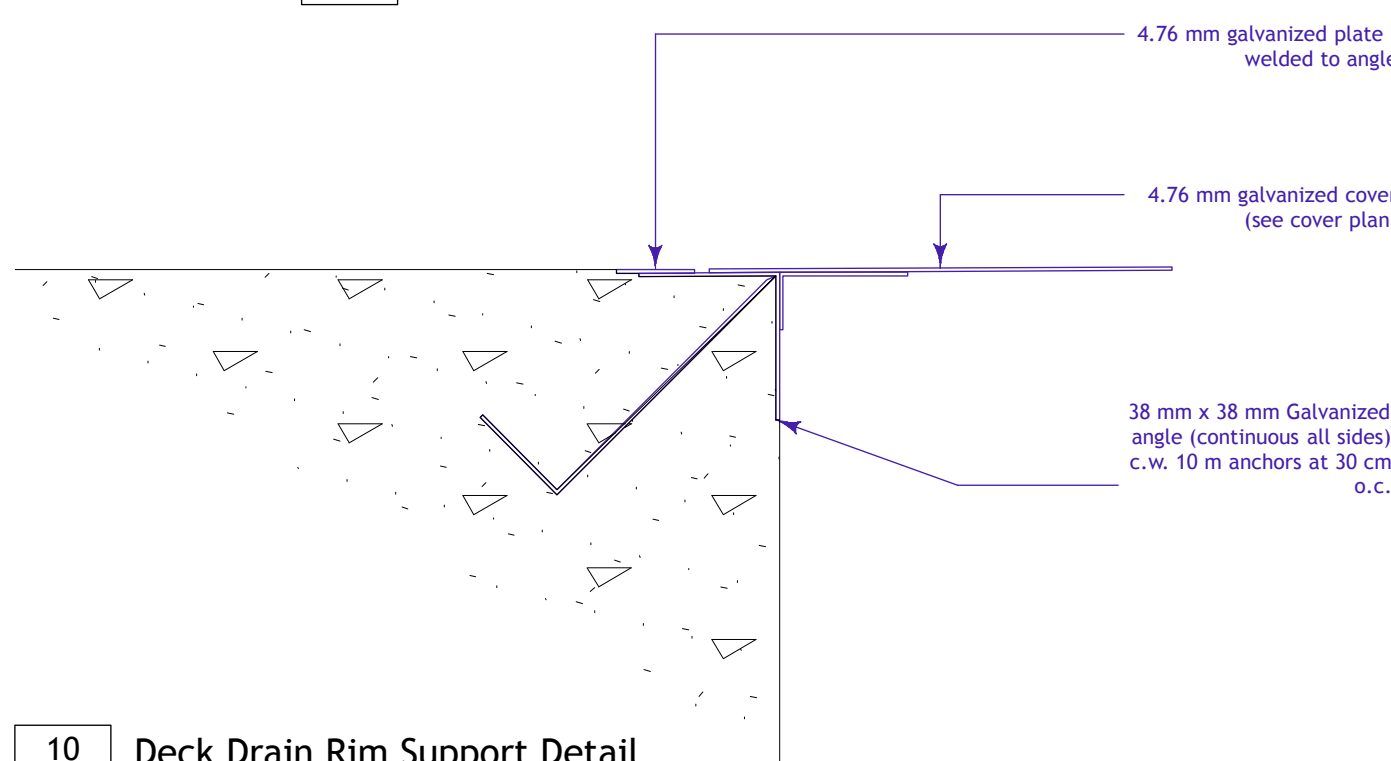
7 Safety surface in Slide Area
L-3 Scale: 1:10



9 Deck Drain Plan
L-3 Scale: 1:10



8 Deck Drain Section
L-3 Scale: 1:10



10 Deck Drain Rim Support Detail
L-3 N.T.S.



6 Existing Mechanical Room
L-3

1. This drawing shall not be used for construction unless signed and sealed by Landscape Architect.
2. Variations and modifications to the work shown will not be allowed without prior written consent of Landscape Architect.
3. Drawing and Specifications, as instruments of service, are the property of the Landscape Architect. The copyright is reserved in the name of the Landscape Architect. No reproduction may be made without the prior written consent of the Landscape Architect.
4. Contractors/bidders are hereby granted a limited licence to reproduce these drawings for the purposes of bidding. Such reproductions are not to be used for construction.

B	16-4-29	For Bid Opportunity
A	16-4-13	For Pre-Bid Opp Review
No.	Date	Issue Notes

Project Title
Jacob Penner Wading Pool
780 McGee St.
Winnipeg, Manitoba

Drawing Title
Details

Drawing No.
L-3

of

3