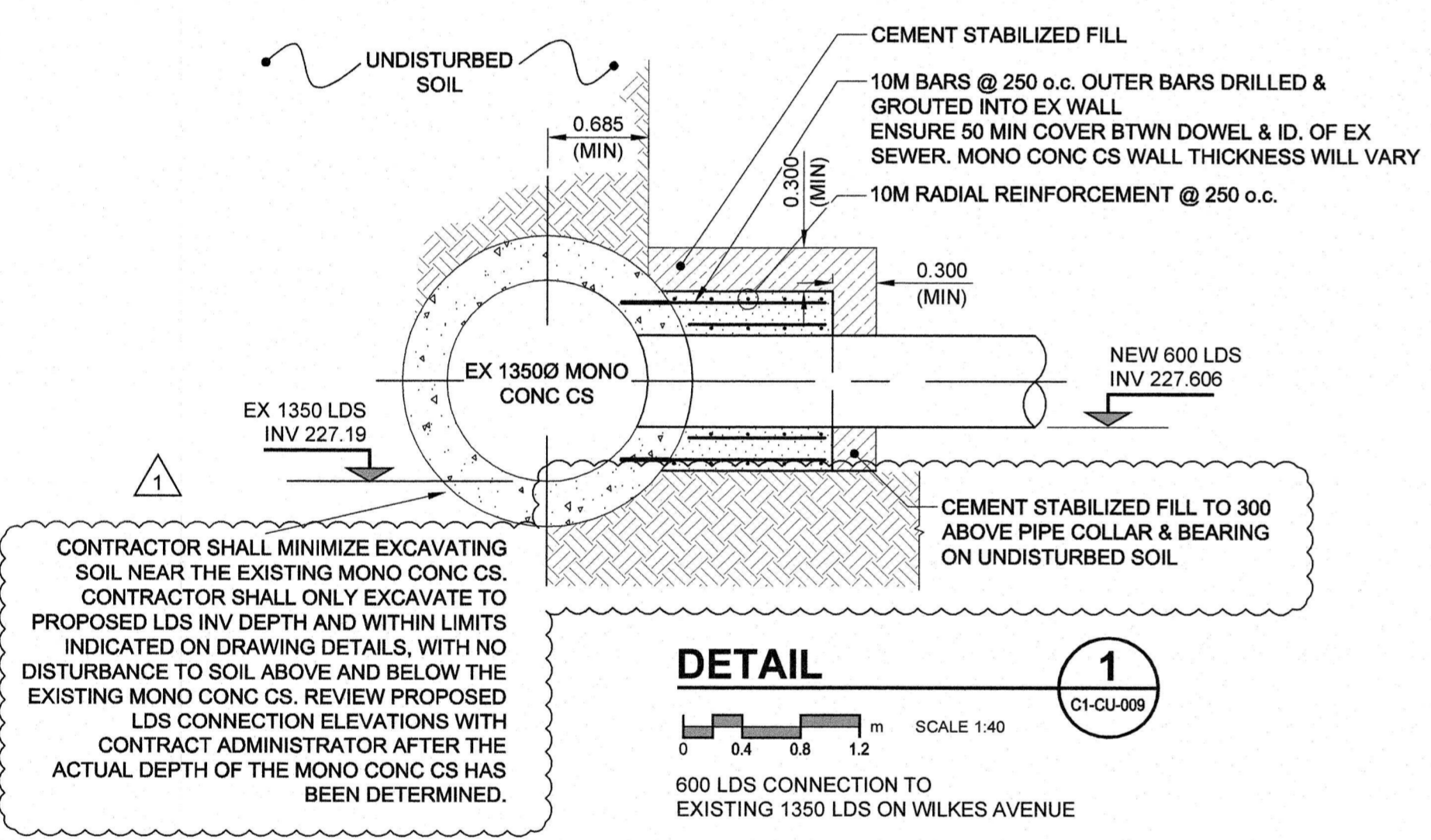
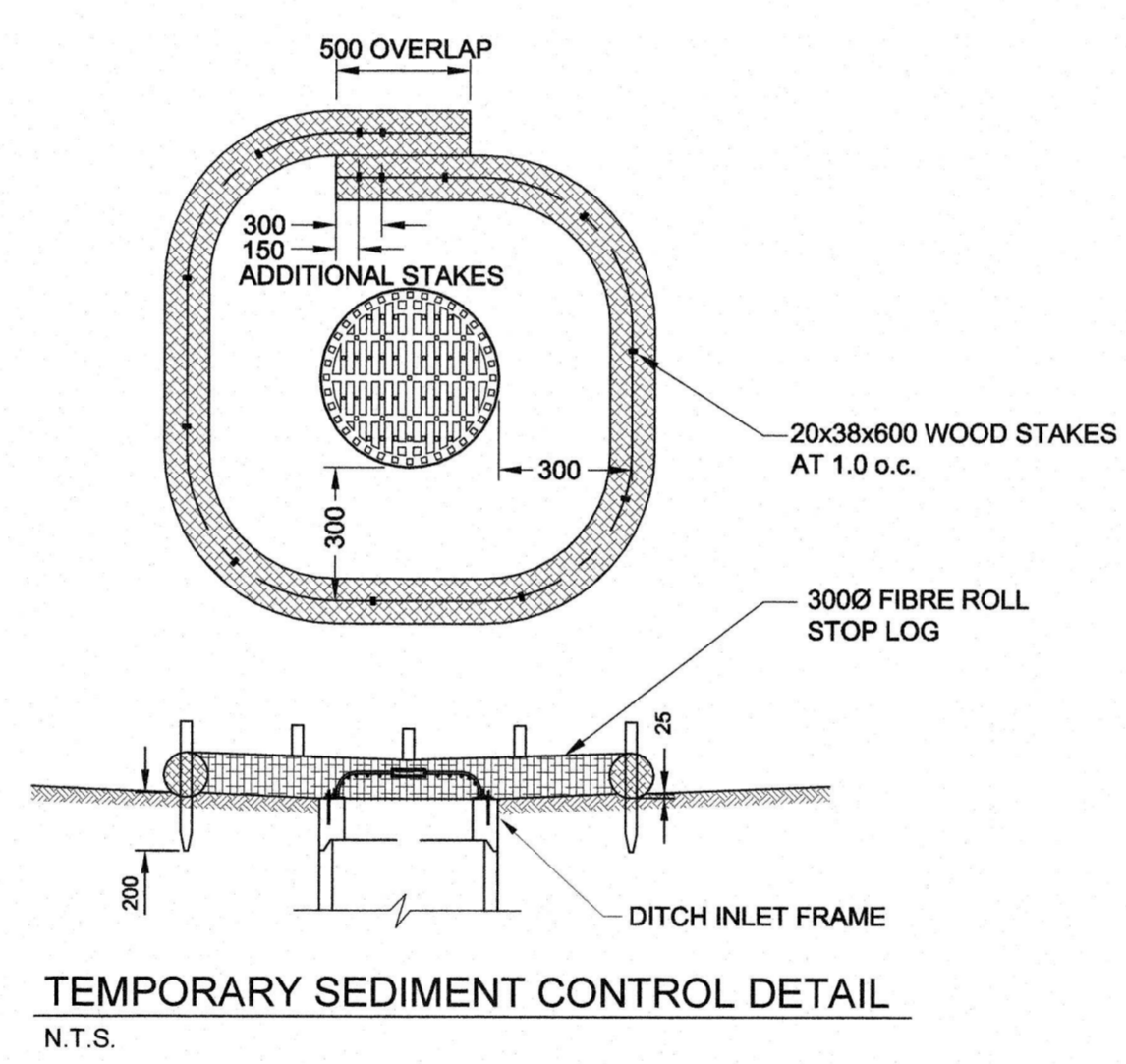


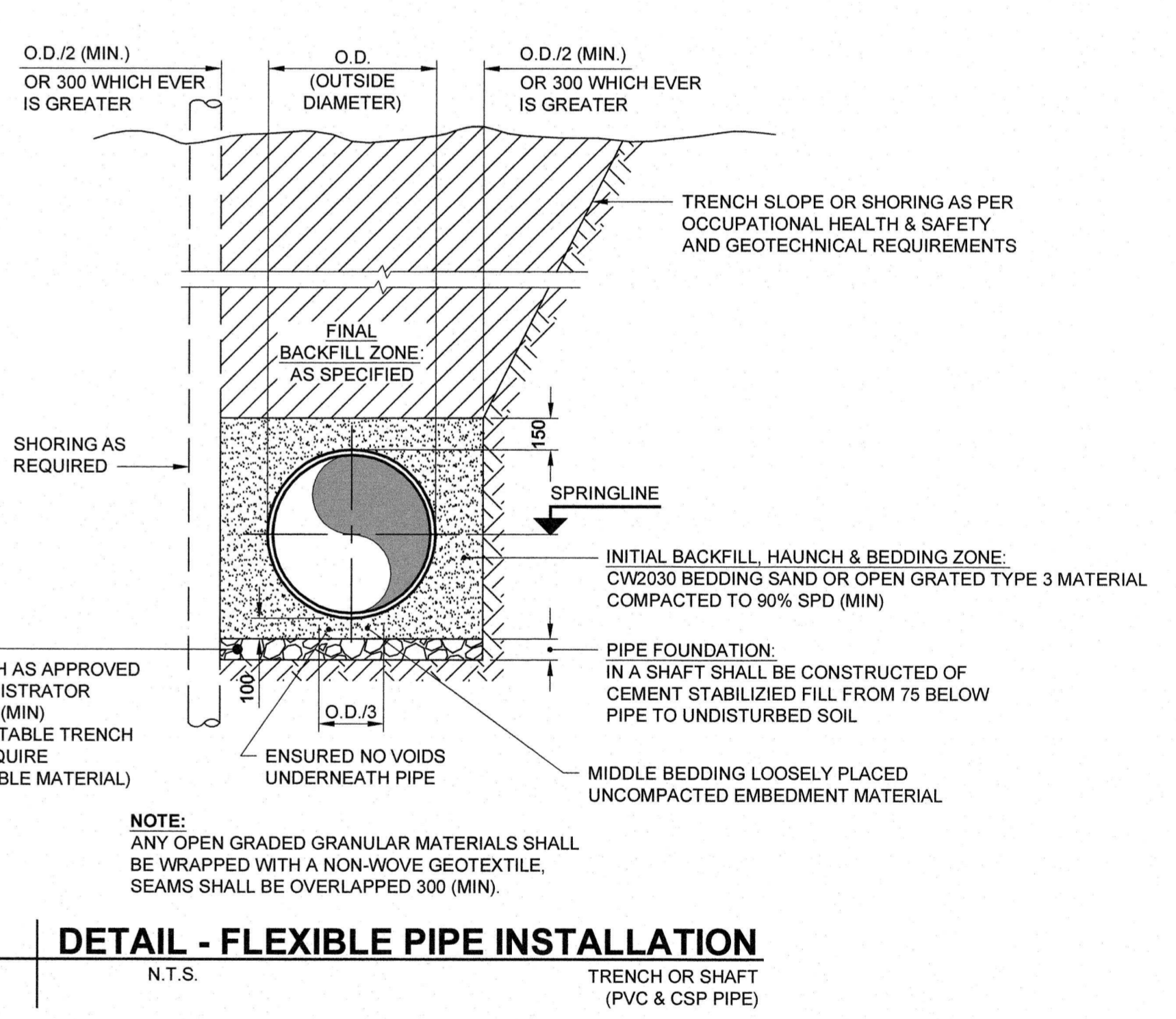
DETAIL - RIGID PIPE INSTALLATION
 N.T.S. TYPE 2 SIDD (REINFORCED CONCRETE PIPE)



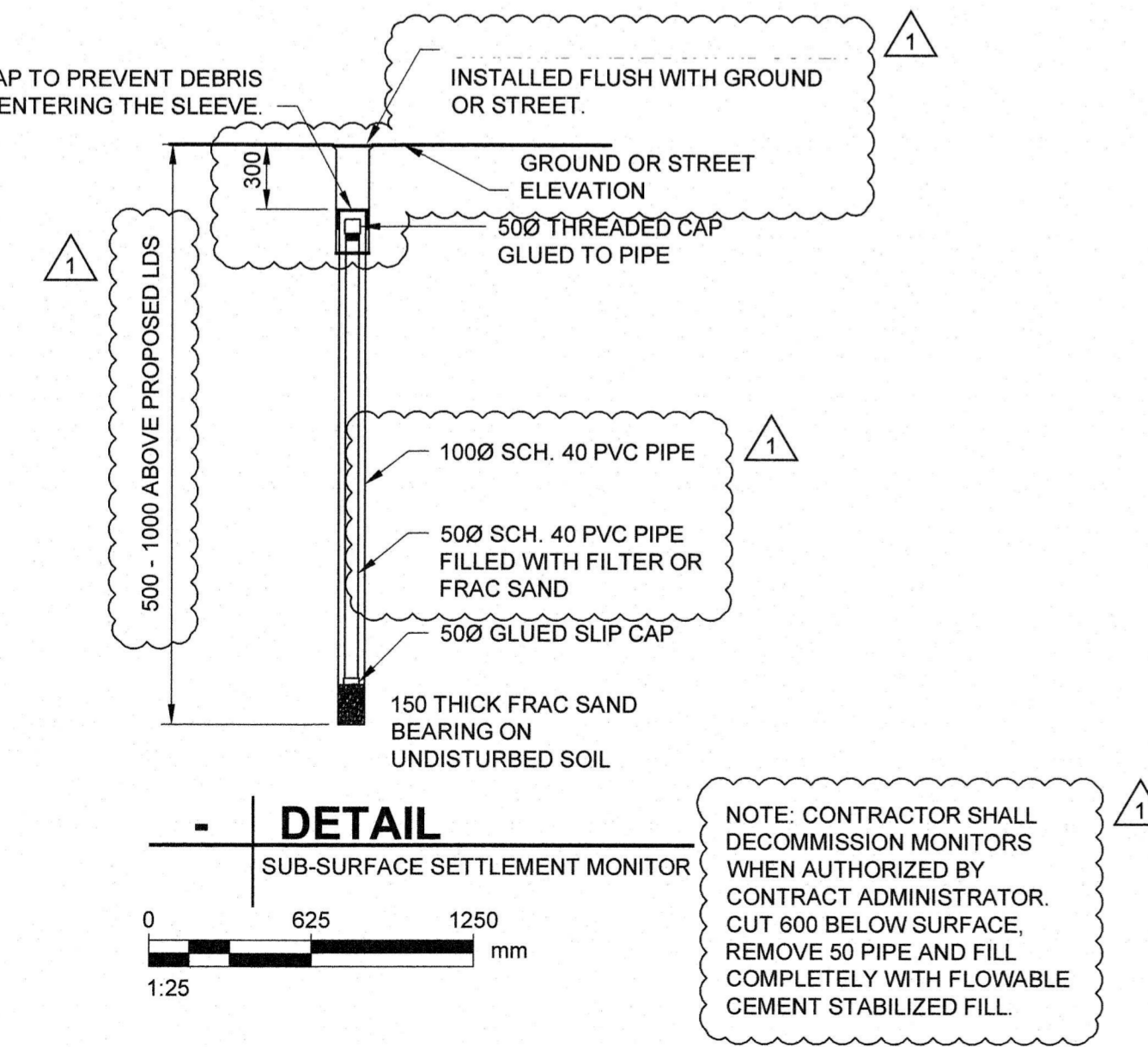
DETAIL 1
 600 LDS CONNECTION TO EXISTING 1350 LDS ON WILKES AVENUE
 SCALE 1:40
 C1-CU-000



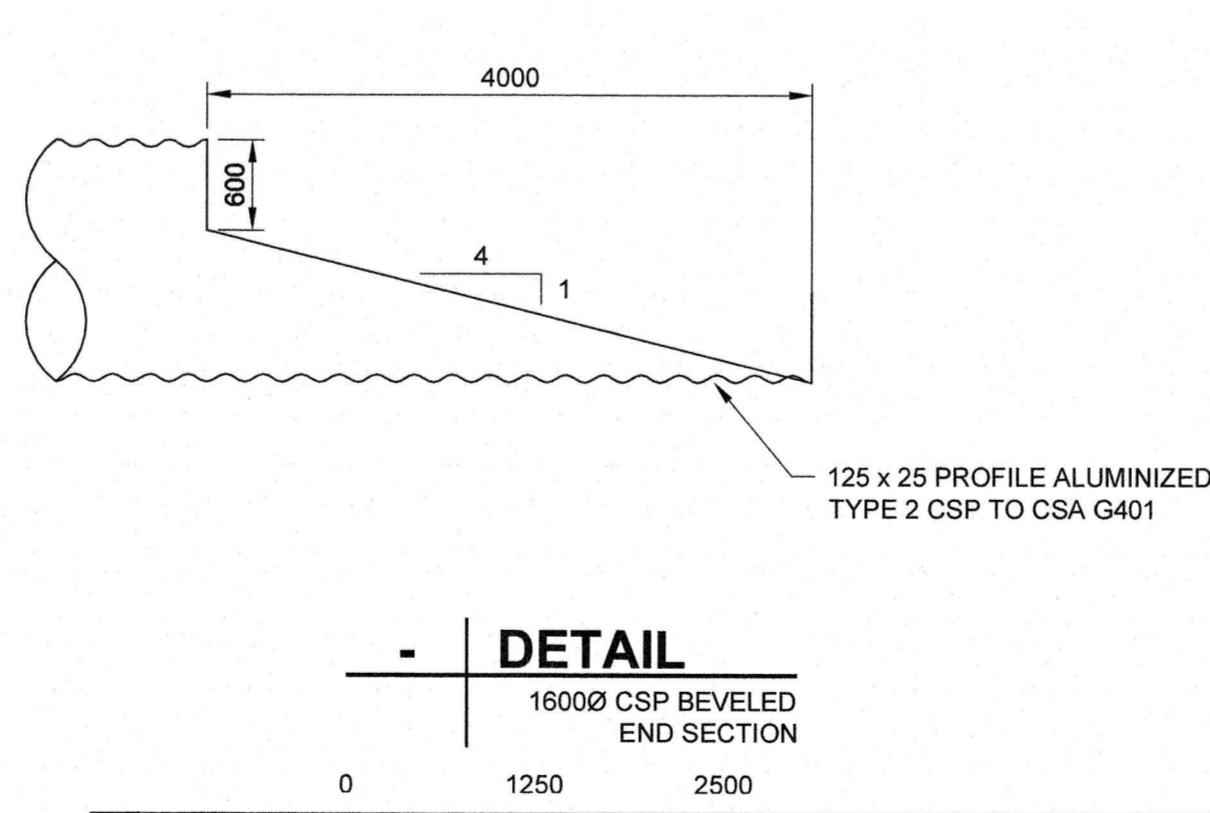
TEMPORARY SEDIMENT CONTROL DETAIL
 N.T.S.



DETAIL - FLEXIBLE PIPE INSTALLATION
 N.T.S. TRENCH OR SHAFT (PVC & CSP PIPE)



DETAIL
 SUB-SURFACE SETTLEMENT MONITOR
 SCALE 1:25



DETAIL
 16000 CSP BEVELED END SECTION
 SCALE 1:25

UNDERGROUND STRUCTURES			B.M. ELEV.		
SUPV. U/G STRUCTURES	DATE				
1	ISSUED FOR ADDENDUM 2	16/10/26	MRP		
0	ISSUED FOR TENDER	16/10/17	WJD		
NO.	REVISIONS	DATE	BY	DATE	DATE

AECOM

DESIGNED BY: MPG	CHECKED BY:
DRAWN BY: KLC	APPROVED BY:
HOR. SCALE: AS NOTED	RELEASED FOR CONSTRUCTION
VERTICAL: AS NOTED	DATE

ENGINEER'S SEAL

CONSULTANT PROJECT NUMBER: 60321148

THE CITY OF WINNIPEG
 PUBLIC WORKS DEPARTMENT

Winnipeg

WAVERLEY STREET UNDERPASS AT CN MILE 3.89 RIVERS SUB
 CONTRACT 1: PRELIMINARY UNDERGROUND WORKS AND SECURITY FENCING

CITY DRAWING NUMBER: U239-2016-C1-CU-007
 SHEET: 9 OF 9
 CONSULTANT DRAWING NUMBER: C1-CU-007

P: 60321148-900-WORK-91 00-00 CAD/200-SHEETS/Municipal/163353-C1-CO-00-CU-Details-001.dwg