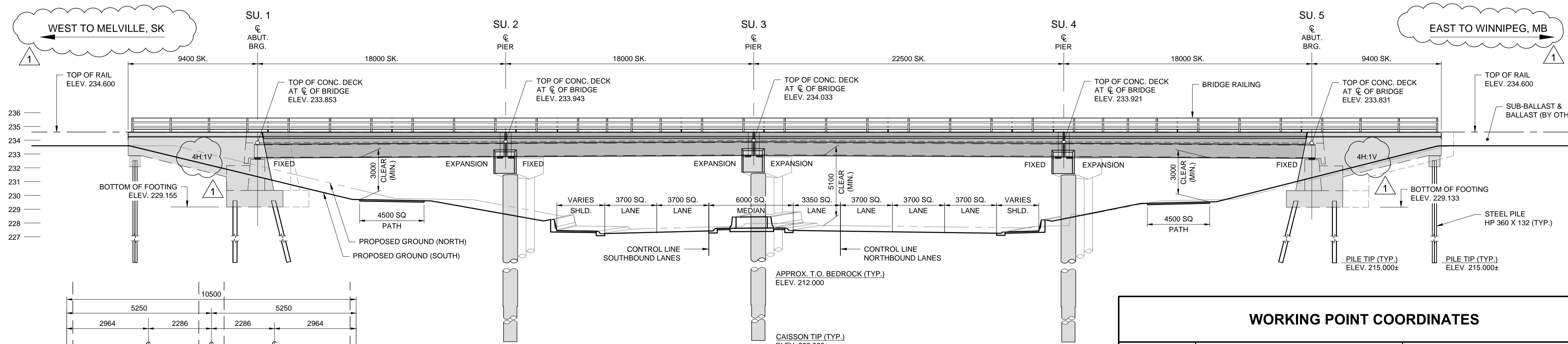
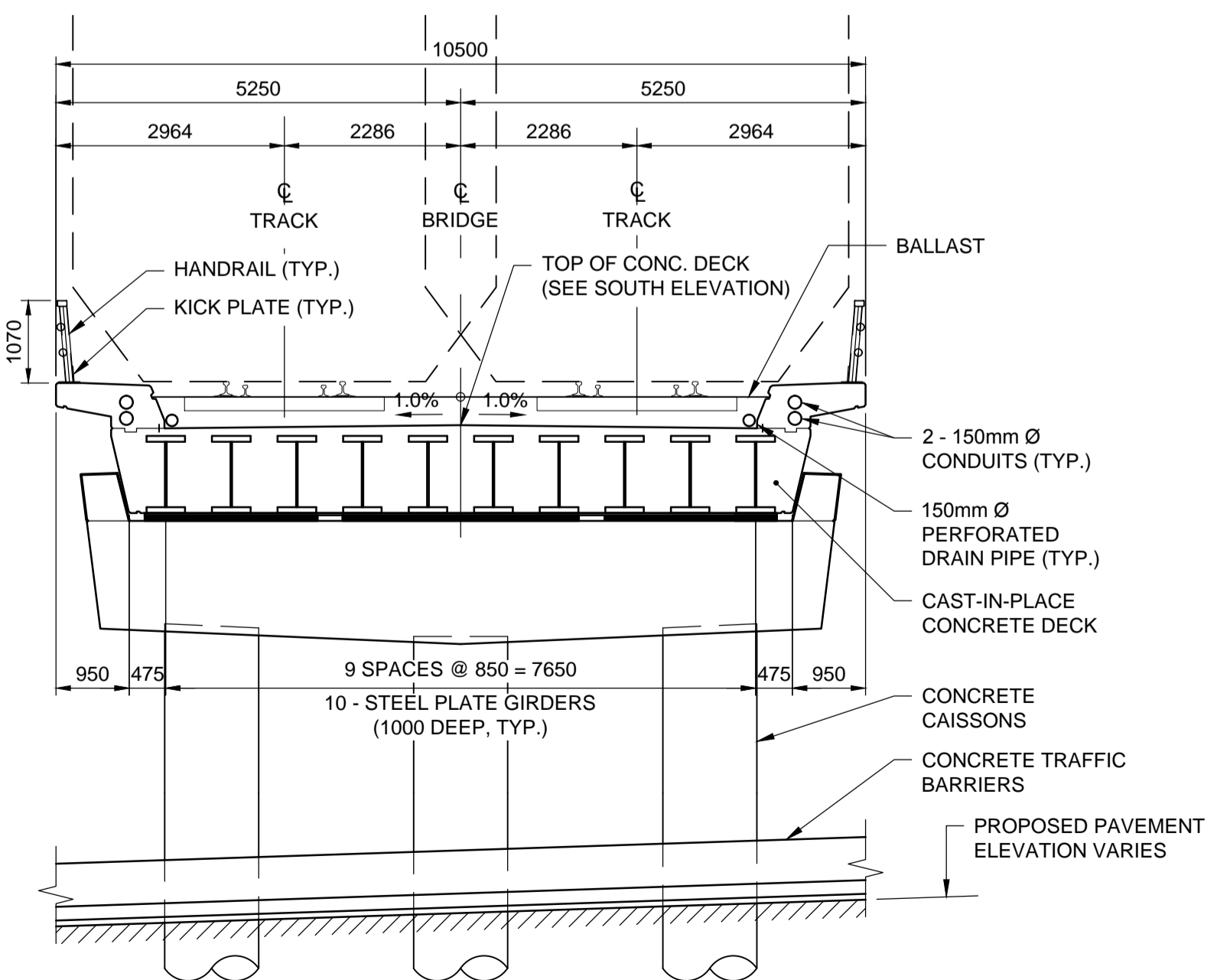


PLAN  
SCALE 1:150



SOUTH ELEVATION  
SCALE 1:150



A SECTION  
SCALE: 1:75

WORKING POINT COORDINATES				
W.P. No.	LOCAL COORDINATE SYSTEM (GROUND DISTANCES)		UTM GRID COORDINATE SYSTEM (NAD 83 1990 ADJUSTMENT)	
	NORTHING	EASTING	NORTHING	EASTING
W.P. 1	1000.000	964.000	5523570.488	630874.732
W.P. 2	1000.000	982.000	5523573.494	630892.475
★ W.P. 3	1000.000	1000.000	5523576.500	630910.218
W.P. 4	1000.000	1022.500	5523580.258	630932.397
W.P. 5	1000.000	1040.500	5523583.264	630950.140

★ TO OBTAIN GROUND COORDINATES, DISTANCES DERIVED FROM UTM COORDINATES WERE DIVIDED BY THE "COMBINED SCALE FACTOR" AND SCALED ABOUT WP.3.  
- COMBINED SCALE FACTOR = 0.99977824

NOTE:  
REFER TO SHEET C2-CT-007 FOR CONTROL POINT INFORMATION.

NOTE:  
THE SOIL SUBSURFACE ELEVATIONS SHOWN ON THE DRAWING ARE APPROXIMATE ONLY. REFER TO THE TEST HOLE LOGS AND ALL OTHER AVAILABLE INFORMATION TO GAIN MORE KNOWLEDGE ABOUT THE SURFACE AND SUBSURFACE CONDITIONS.

**APEGM**  
Certificate of Authorization  
Dillon Consulting Limited (MB)  
No. 1789 Date: 2017/01/09

NO.	REVISIONS	DATE	BY	DATE
1	ADDENDUM #1	17/01/25	RE	
0	ISSUED FOR TENDER	17/01/09	RE	

**DILLON CONSULTING**  
DESIGNED BY: RE  
DRAWN BY: CGC  
CHECKED BY: SSR  
APPROVED BY: DBW  
HOR. SCALE: AS SHOWN  
VERTICAL: AS SHOWN  
RELEASED FOR CONSTRUCTION  
CONSULTANT PROJECT NUMBER: 16-3353

**THE CITY OF WINNIPEG PUBLIC WORKS DEPARTMENT**  
Waverley Street Underpass at CN Mile 3.89 Rivers Sub  
Contract 2: Underpass Structure, Railworks, Roadworks, Land Drainage Sewer, Pumping Station and Landscaping Works  
GENERAL ARRANGEMENT OF BRIDGE  
CITY DRAWING NUMBER: U-239-2016-C2-CS-003  
SHEET 003 OF 085  
CONSULTANT DRAWING NUMBER: C2-CS-003

G:\CAD\163353\Technical\Workspaces\Engineering\Drawings and Figures\Structures\Contract\163353-C2-CON-CS-GENERAL ARRANGEMENT.dwg