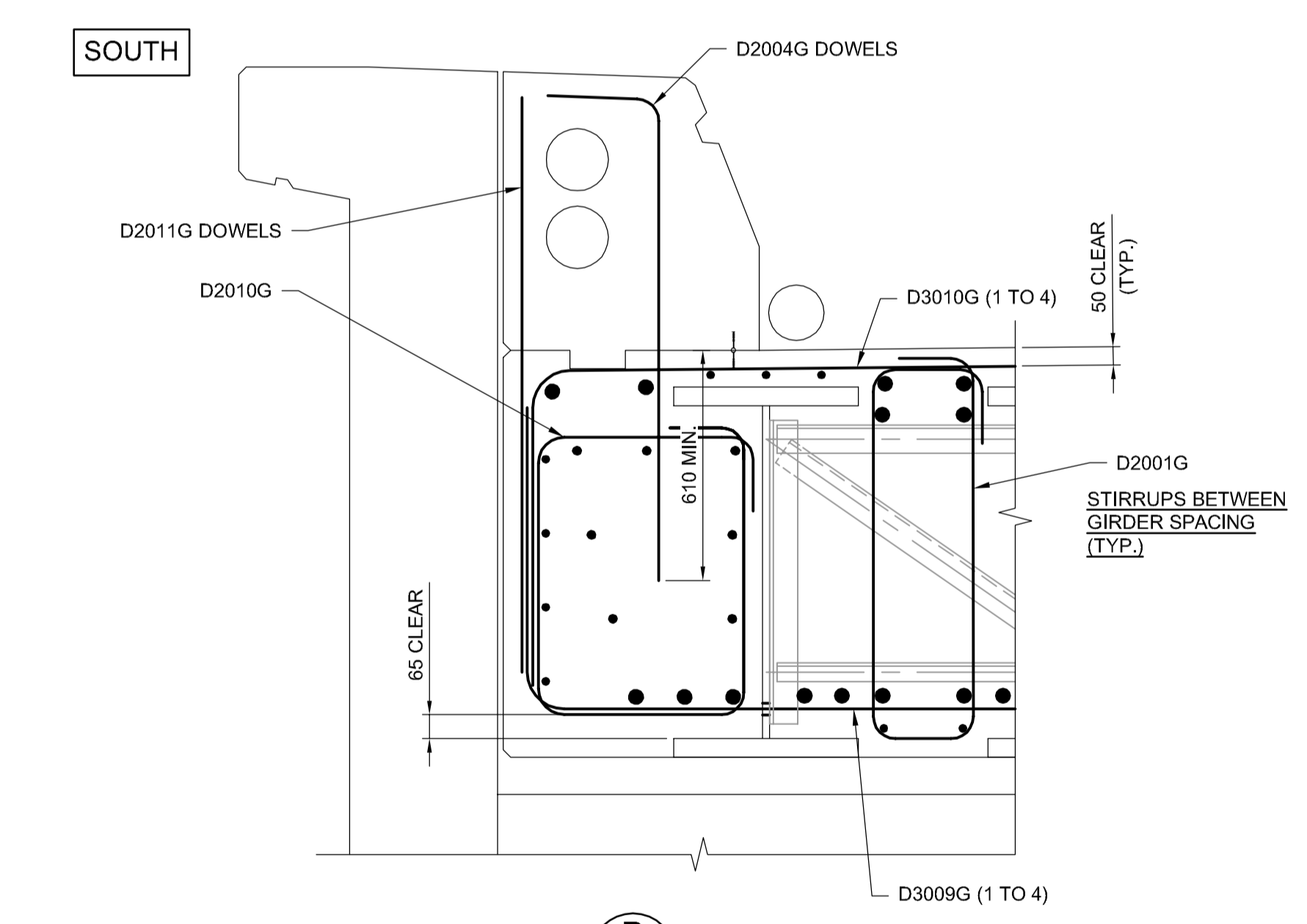
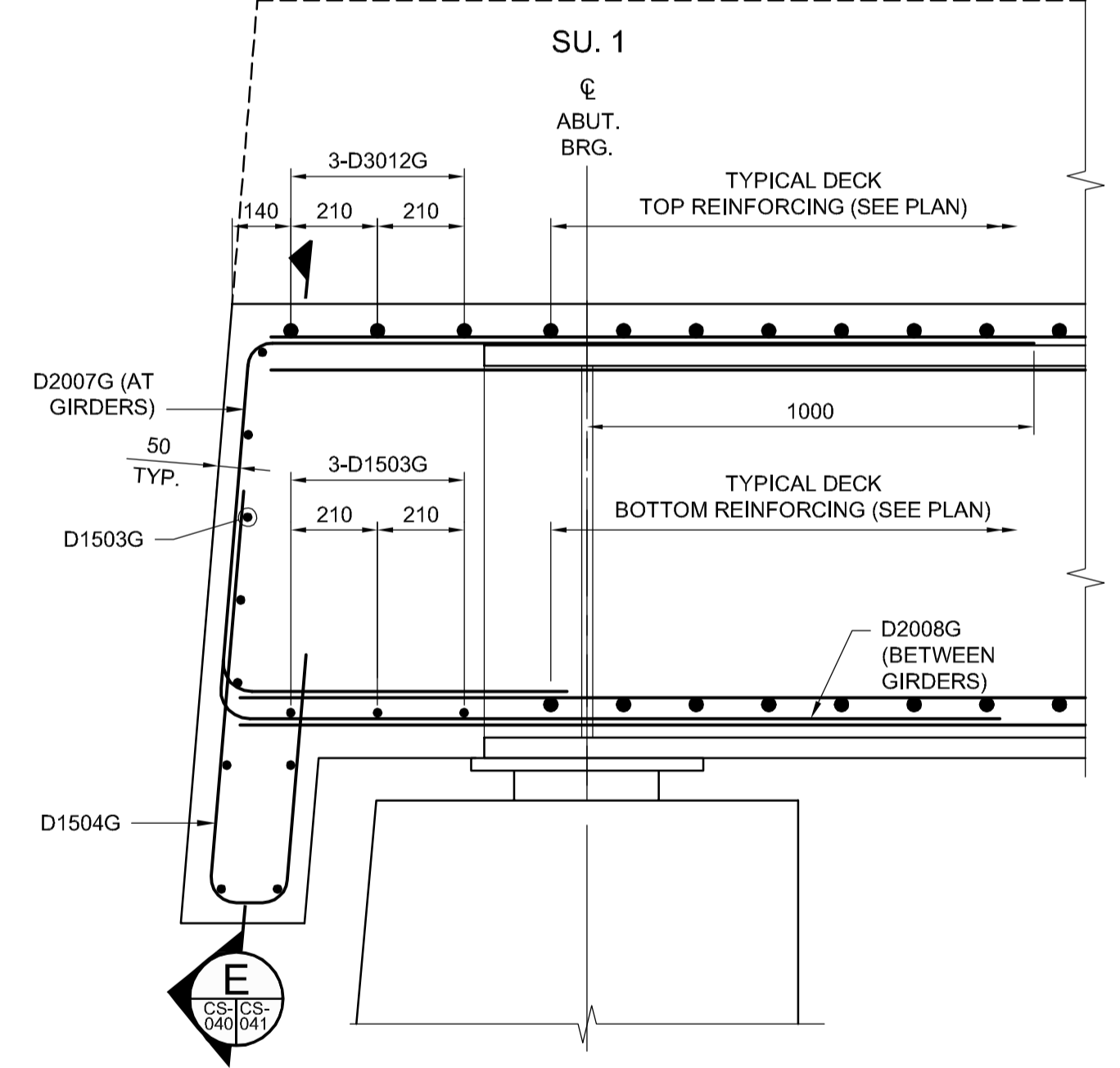


A SECTION
SCALE: 1:15

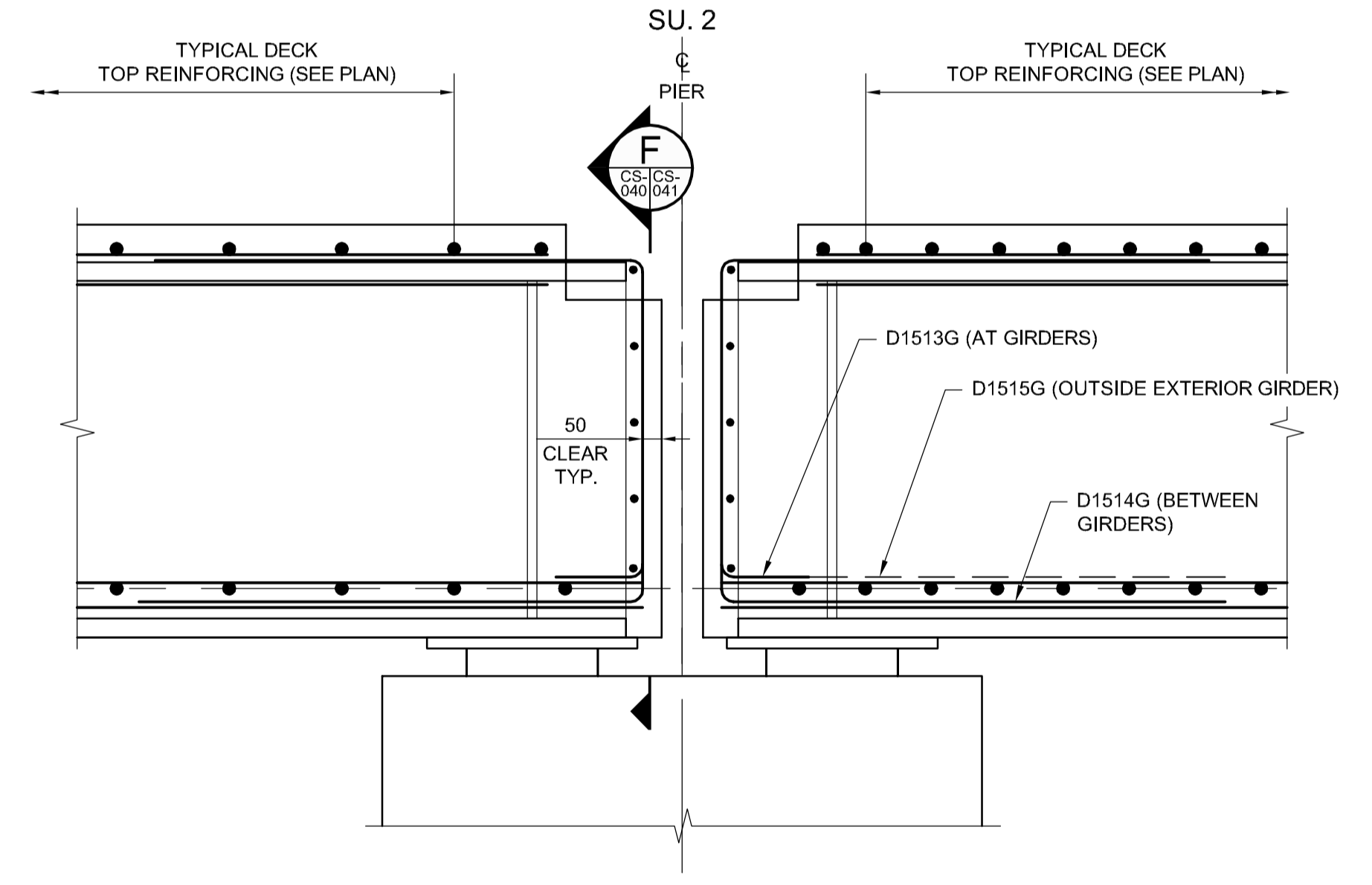
NOTE:
MAINTAIN STAGGERED SPLICING TOP AND BOTTOM THROUGH OUT REBAR INSTALLATION



B SECTION
SCALE: 1:15



C SECTION
SCALE: 1:15
AT GIRDER



D SECTION
SCALE: 1:15

ALL REINFORCING CHANGED TO GALVANIZED REINFORCING STEEL

- NOTES:**
- FOR REINFORCING STEEL NOTES REFER TO SHEET C2-CS-001.
 - REINFORCING STEEL WITH MARKS ENDING WITH "G" SHALL BE GALVANIZED REINFORCING.
 - FOR CONCRETE CLEAR COVER TO REINFORCEMENT REFER TO SHEET C2-CS-001.

G:\CAD\163353\Technical Workspace\Engineering\Drawings and Figures\Structures\Contract\163353-C2-CON-CS-DECK SLAB REINFORCING 4.dwg

APEGM
Certificate of Authorization
Dillon Consulting Limited (MB)
No. 1789 Date: 2017/01/09

DESIGNED BY	RE	CHECKED BY	SSR
DRAWN BY	NBG/CCG	APPROVED BY	DBW
HOR. SCALE	AS SHOWN	RELEASED FOR CONSTRUCTION	
VERTICAL	AS SHOWN		
NO.	REVISIONS	DATE	BY
1	ADDENDUM #1	17/01/25	RE
0	ISSUED FOR TENDER	17/01/09	RE

ENGINEER'S SEAL
PROVINCE OF MANITOBA
R.B. ERIC
Member 22665
REGISTERED PROFESSIONAL ENGINEER
CONSULTANT PROJECT NUMBER
16-3353

THE CITY OF WINNIPEG
PUBLIC WORKS DEPARTMENT

Waverley Street Underpass at CN Mile 3.89 Rivers Sub
Contract 2: Underpass Structure, Railworks,
Roadworks, Land Drainage Sewer, Pumping Station
and Landscaping Works

CITY DRAWING NUMBER
U-239-2016-C2-CS-040
SHEET 040 OF 085
CONSULTANT DRAWING NUMBER
C2-CS-040

**DECK SLAB REINFORCING
DETAILS - SHEET 1**