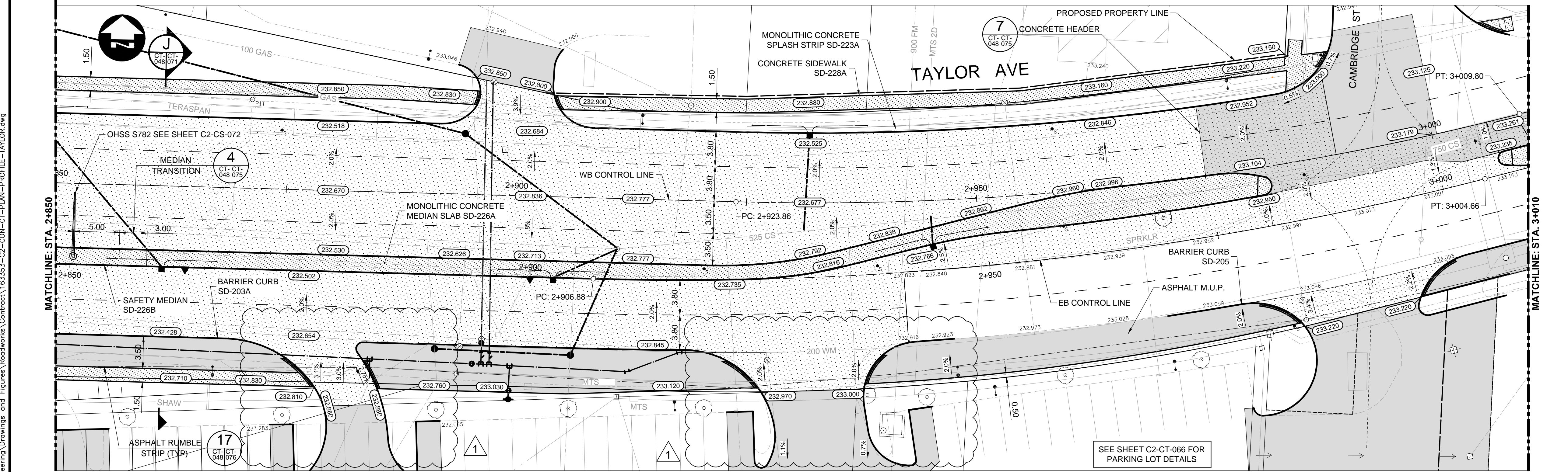


- CONSTRUCTION NOTES:**
- ISOLATE MISCELLANEOUS ITEMS IN NEW CONCRETE WORKS AS PER SD-228C.
  - LEGAL PLAN AND UNDERGROUND INFORMATION FROM CITY OF WINNIPEG LBIS. CONTRACTOR VERIFY ALL UNDERGROUNDS IN THE FIELD.
  - CONTRACTOR TO TAKE PRECAUTIONARY STEPS TO AVOID DAMAGE FROM CONSTRUCTION ACTIVITIES TO TREES WITHIN THE LIMITS OF CONSTRUCTION.
  - LOCATION OF EXISTING SERVICES TO BE CONFIRMED IN THE FIELD BY THE CONTRACTOR.
  - INSTALL CB LEADS AT MIN. 1.0% SLOPE OR AS DIRECTED BY CONTRACT ADMINISTRATOR.
  - FOR CB LEADS, RIP RAP AND LDS INFORMATION SEE "CU" DRAWINGS.
  - CONTRACTOR SHALL CONFIRM EXISTING LEAD INVERT ELEVATIONS PRIOR TO INSTALLATION.



**METRIC**  
WHOLE NUMBERS INDICATE MILLIMETRES  
DECIMAL NUMBERS INDICATE METRES

**WARNING**  
IF POWER EQUIPMENT OR EXPLOSIVES ARE TO BE USED FOR EXCAVATION ON THIS PROJECT THE CONTRACTOR MUST:

- NOTIFY THE GAS COMPANY OF THE PROPOSED LOCATION OF EXCAVATION.
- TAKE PRECAUTION TO AVOID DAMAGE TO GAS COMPANY INSTALLATIONS SEE PROVINCIAL REGULATION 210/72 FOR DETAILS.
- OBTAIN EXCAVATION PERMITS PRIOR TO CONSTRUCTION.



150 WM	WATERMAIN	150 WM	CONCRETE	150 WM	WATERMAIN	150 WM	WATERMAIN
300 LDS	HYDRANT	300 LDS	ASPHALT	300 LDS	LAND DRAINAGE SEWER	300 LDS	LAND DRAINAGE SEWER
250 WWS	VALVE	250 WWS	PLANING	250 WWS	WASTE WATER SEWER	250 WWS	WASTE WATER SEWER
MANHOLE	MANHOLE	MANHOLE	SIDEWALK	HYDRANT	HYDRANT	HYDRANT	HYDRANT
CATCH BASIN	CATCH BASIN	CATCH BASIN	PAVING STONES	VALVE	VALVE	VALVE	VALVE
CURB INLET	CURB INLET	CURB INLET	PARTIAL DEPTH REPAIR	C PROFILE	C PROFILE	C PROFILE	C PROFILE
300 LDS	LAND DRAINAGE SEWER	300 LDS	PROPERTY LINE	NORTH/WEST GUTTER	NORTH/WEST GUTTER	NORTH/WEST GUTTER	NORTH/WEST GUTTER
250 WWS	WASTE WATER SEWER	250 WWS	DRAINAGE ARROW	SOUTH/EAST GUTTER	SOUTH/EAST GUTTER	SOUTH/EAST GUTTER	SOUTH/EAST GUTTER
HYDRO	HYDRO	HYDRO	CURB RAMP (SD-229C)	NORTH/WEST DITCH	NORTH/WEST DITCH	NORTH/WEST DITCH	NORTH/WEST DITCH
MTS	M.T.S.	MTS	DETECTABLE WARNING	SOUTH/EAST DITCH	SOUTH/EAST DITCH	SOUTH/EAST DITCH	SOUTH/EAST DITCH
100 GAS	GAS	100 GAS	SURFACE TILE (SD-229AA)				
EXISTING	LEGEND-PLAN	PROPOSED	EXISTING	LEGEND-PROFILE	PROPOSED	EXISTING	LEGEND-PROFILE

**UNDERGROUND STRUCTURES**

SUPPLY: U/G STRUCTURES DATE

LOCATION OF UNDERGROUND STRUCTURES AS SHOWN ARE BASED ON THE BEST INFORMATION AVAILABLE BUT NO GUARANTEE IS GIVEN THAT ALL EXISTING UTILITIES ARE SHOWN OR THAT THE GIVEN LOCATIONS ARE EXACT. CONFIRMATION OF EXISTENCE AND EXACT LOCATION OF ALL SERVICES MUST BE OBTAINED FROM THE INDIVIDUAL UTILITIES BEFORE PROCEEDING WITH CONSTRUCTION.

B.M. ELEV.	SEE SHEET C2-CT-007 FOR CONTROL POINT INFORMATION
1	ADDENDUM #2
0	ISSUED FOR TENDER
NO.	REVISIONS

**DILLON CONSULTING**

DESIGNED BY	RTP	CHECKED BY	DBW
DRAWN BY	RD	APPROVED BY	DBW
HOR. SCALE	1:250	RELEASED FOR CONSTRUCTION	
VERTICAL	1:10	DATE	

**ENGINEER'S SEAL**

PROVINCE OF MANITOBA  
**D.B. WIEBE**  
Member  
22480  
REGISTERED PROFESSIONAL ENGINEER

CONSULTANT PROJECT NUMBER  
**16-3353**

**THE CITY OF WINNIPEG**  
PUBLIC WORKS DEPARTMENT

**Waverley Street Underpass at CN Mile 3.89 Rivers Sub**  
CONTRACT 2: UNDERPASS STRUCTURES, RAILWORKS, ROADWORKS, LAND DRAINAGE SEWER, PUMPING STATION AND LANDSCAPING WORKS

CITY DRAWING NUMBER  
U-239-2016-C2-CT-048

SHEET  
048 OF 081

CONSULTANT DRAWING NUMBER  
**C2-CT-048**

TAYLOR AVENUE - STA. 2+850 TO 3+010  
(PLAN-PROFILE)

G:\CAD\163353\Technical\Workspace\Drawings and Figures\Roadworks\Contract\163353-C2-CON-CT-PLAN-PROFILE-TAYLOR.dwg