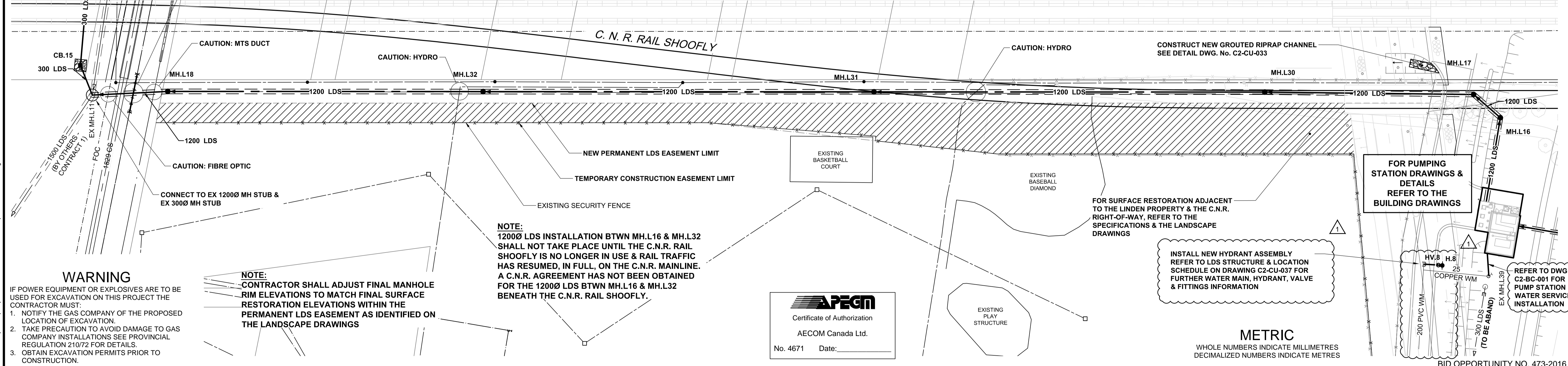


STRUCTURE NAME	DESCRIPTION	FRAME & COVER	NORTHING	EASTING	EX RIM ELEV	PROP RIM ELEV	INV NORTH	INV SOUTH	INV EAST	INV WEST	BOTTOM ELEV	CB LEAD
CB.15	SD-025 CB w/ BEEHIVE INLET		5523494.013	630504.385		232.260	230.880	230.560			230.18	8.2m OF 300 SSP @ 15.99%
CP.22	SD-023 CP w/ BEEHIVE INLET		5523517.964	630502.410		232.634		231.384			231.38	24.0m OF 300 SSP @ 2.10%
MH.L11	SD-010 2700 mm		5523487.015	630508.647		233.102					227.65	128.2m OF 1200 SSP @ 0.57%
MH.L16	SD-010 2100 mm		5523541.413	630864.817		233.388					229.74	21.7m OF 1200 SSP @ 0.07%
MH.L17	SD-010 2100 mm		5523546.141	630857.087		233.389					229.73	9.1m OF 1200 SSP @ 0.09%
MH.L18	SD-010 2100 mm		5523491.160	630527.523		234.214					228.06	80.7m OF 1200 SSP @ 1.24%
MH.L30	SD-010 2100 mm		5523537.820	630804.291		233.567					229.69	53.4m OF 1200 SSP @ 0.07%
MH.L31	SD-010 2100 mm		5523521.196	630705.683		234.657					229.62	100.0m OF 1200 SSP @ 0.07%
MH.L32	SD-010 2100 mm		5523504.572	630607.074		234.596					229.30	100.0m OF 1200 SSP @ 0.32%



WARNING
IF POWER EQUIPMENT OR EXPLOSIVES ARE TO BE USED FOR EXCAVATION ON THIS PROJECT THE CONTRACTOR MUST:
1. NOTIFY THE GAS COMPANY OF THE PROPOSED LOCATION OF EXCAVATION.
2. TAKE PRECAUTION TO AVOID DAMAGE TO GAS COMPANY INSTALLATIONS SEE PROVINCIAL REGULATION 210/72 FOR DETAILS.
3. OBTAIN EXCAVATION PERMITS PRIOR TO CONSTRUCTION.

NOTE:
CONTRACTOR SHALL ADJUST FINAL MANHOLE RIM ELEVATIONS TO MATCH FINAL SURFACE RESTORATION ELEVATIONS WITHIN THE PERMANENT LDS EASEMENT AS IDENTIFIED ON THE LANDSCAPE DRAWINGS

NOTE:
1200Ø LDS INSTALLATION BTWN MH.L16 & MH.L32 SHALL NOT TAKE PLACE UNTIL THE C.N.R. RAIL SHOOFLY IS NO LONGER IN USE & RAIL TRAFFIC HAS RESUMED, IN FULL, ON THE C.N.R. MAINLINE. A C.N.R. AGREEMENT HAS NOT BEEN OBTAINED FOR THE 1200Ø LDS BTWN MH.L16 & MH.L32 BENEATH THE C.N.R. RAIL SHOOFLY.



INSTALL NEW HYDRANT ASSEMBLY REFER TO LDS STRUCTURE & LOCATION SCHEDULE ON DRAWING C2-CU-037 FOR FURTHER WATER MAIN, HYDRANT, VALVE & FITTINGS INFORMATION

FOR PUMPING STATION DRAWINGS & DETAILS REFER TO THE BUILDING DRAWINGS

METRIC
WHOLE NUMBERS INDICATE MILLIMETRES
DECIMALIZED NUMBERS INDICATE METRES

EXISTING	LEGEND - PLAN	NEW	EXISTING	LEGEND - PLAN	NEW	EXISTING	LEGEND - PROFILE	NEW
150 WM	WATER MAIN	150 WM	PIPE ABANDONMENTS	150 WM	WATER MAIN	150 WM	UNDERGROUND STRUCTURES	B.M. ELEV.
300 LDS	HYDRANT VALVE	300 LDS	SURVEY BAR	300 LDS	HYDRANT VALVE	300 LDS	SUPV. U/G STRUCTURES	DATE
250 WWS	LAND DRAINAGE SEWER	250 WWS	CURB STOP	250 WWS	WASTE WATER SEWER	250 WWS	LOCATION OF UNDERGROUND STRUCTURES AS SHOWN ARE BASED ON THE BEST INFORMATION AVAILABLE BUT NO GUARANTEE IS GIVEN THAT ALL EXISTING UTILITIES ARE SHOWN OR THAT THE GIVEN LOCATIONS ARE EXACT. CONFIRMATION OF EXISTENCE AND EXACT LOCATION OF ALL SERVICES MUST BE OBTAINED FROM THE INDIVIDUAL UTILITIES BEFORE PROCEEDING WITH CONSTRUCTION.	
	WASTE WATER SEWER		REDUCER		PAVEMENT CROWN			
	SEWER SERVICE PIPE		COUPLING		N/W PROPERTY LINE			
	DRAINAGE CONNECTION PIPE		ANODE		S/E PROPERTY LINE			
	MANHOLE		HYDRO		N/W GUTTER			
	CATCH BASIN		MTS		S/E GUTTER			
	CURB INLET		GAS					
	CULVERT		TESTHOLE					
			LAMP STANDARD					

DESIGNED BY	MPG	CHECKED BY	DATE
DRAWN BY	KLC	APPROVED BY	
HOR. SCALE	1:500	RELEASED FOR CONSTRUCTION	
VERTICAL	1:100		
NO. REVISIONS		DATE	BY
1	ISSUED FOR ADDENDUM 2	17/02/03	Wjd
0	ISSUED FOR TENDER	17/01/09	Wjd

DESIGNED BY	MPG	CHECKED BY	DATE
DRAWN BY	KLC	APPROVED BY	
HOR. SCALE	1:500	RELEASED FOR CONSTRUCTION	
VERTICAL	1:100		
NO. REVISIONS		DATE	BY
1	ISSUED FOR ADDENDUM 2	17/02/03	Wjd
0	ISSUED FOR TENDER	17/01/09	Wjd

DESIGNED BY	MPG	CHECKED BY	DATE
DRAWN BY	KLC	APPROVED BY	
HOR. SCALE	1:500	RELEASED FOR CONSTRUCTION	
VERTICAL	1:100		
NO. REVISIONS		DATE	BY
1	ISSUED FOR ADDENDUM 2	17/02/03	Wjd
0	ISSUED FOR TENDER	17/01/09	Wjd

DESIGNED BY	MPG	CHECKED BY	DATE
DRAWN BY	KLC	APPROVED BY	
HOR. SCALE	1:500	RELEASED FOR CONSTRUCTION	
VERTICAL	1:100		
NO. REVISIONS		DATE	BY
1	ISSUED FOR ADDENDUM 2	17/02/03	Wjd
0	ISSUED FOR TENDER	17/01/09	Wjd

ENGINEER'S SEAL
PROVINCE OF MANITOBA
M.P.A. GAUDREAU
Member
32167
REGISTERED PROFESSIONAL ENGINEER

THE CITY OF WINNIPEG PUBLIC WORKS DEPARTMENT

WAVERLEY STREET UNDERPASS AT CN MILE 3.89 RIVERS SUB CONTRACT 2: UNDERPASS STRUCTURE, RAILWORKS, ROADWORKS, LAND DRAINAGE SEWER, PUMPING STATION AND LANDSCAPING WORKS

S.R.B. OUTFALL - PLAN/PROFILE LDS EXISTING S.R.B. TO THE NEW PUMPING STATION

CITY DRAWING NUMBER U239-2016-C2-CU-021
SHEET 21 OF 41
CONSULTANT DRAWING NUMBER C2-CU-021

CONSULTANT PROJECT NUMBER 60321148
BID OPPORTUNITY NO. 473-2016