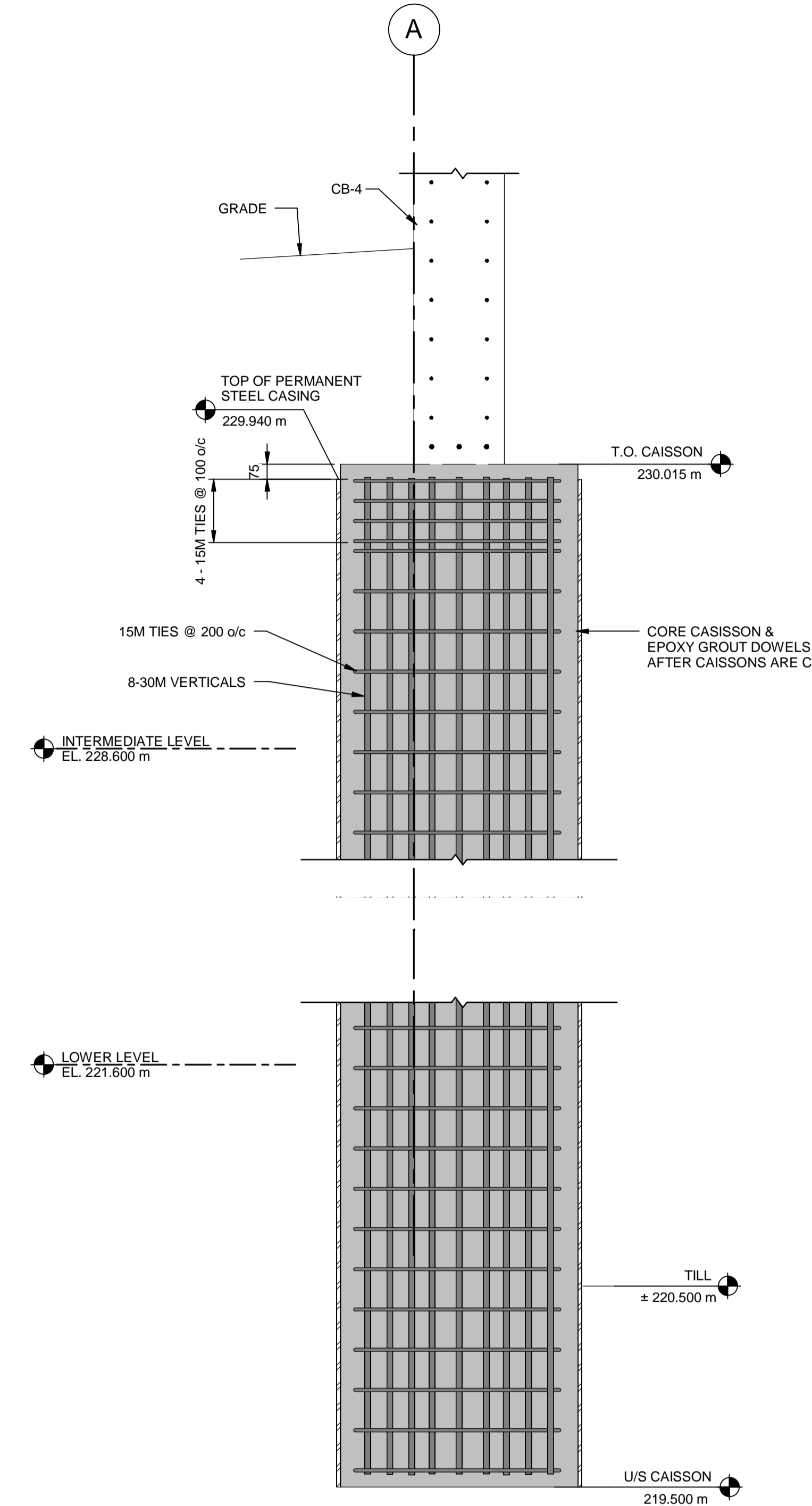
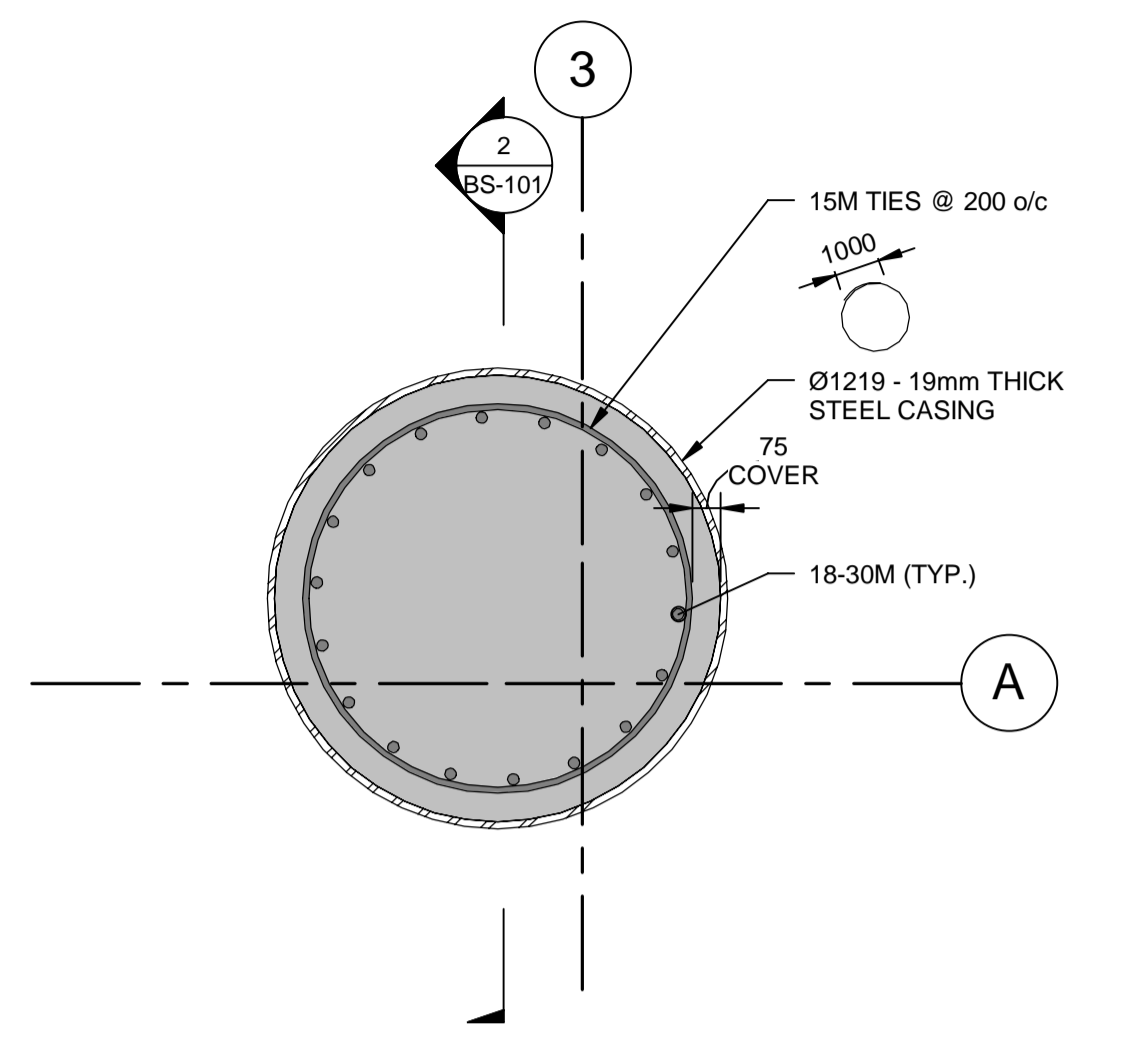


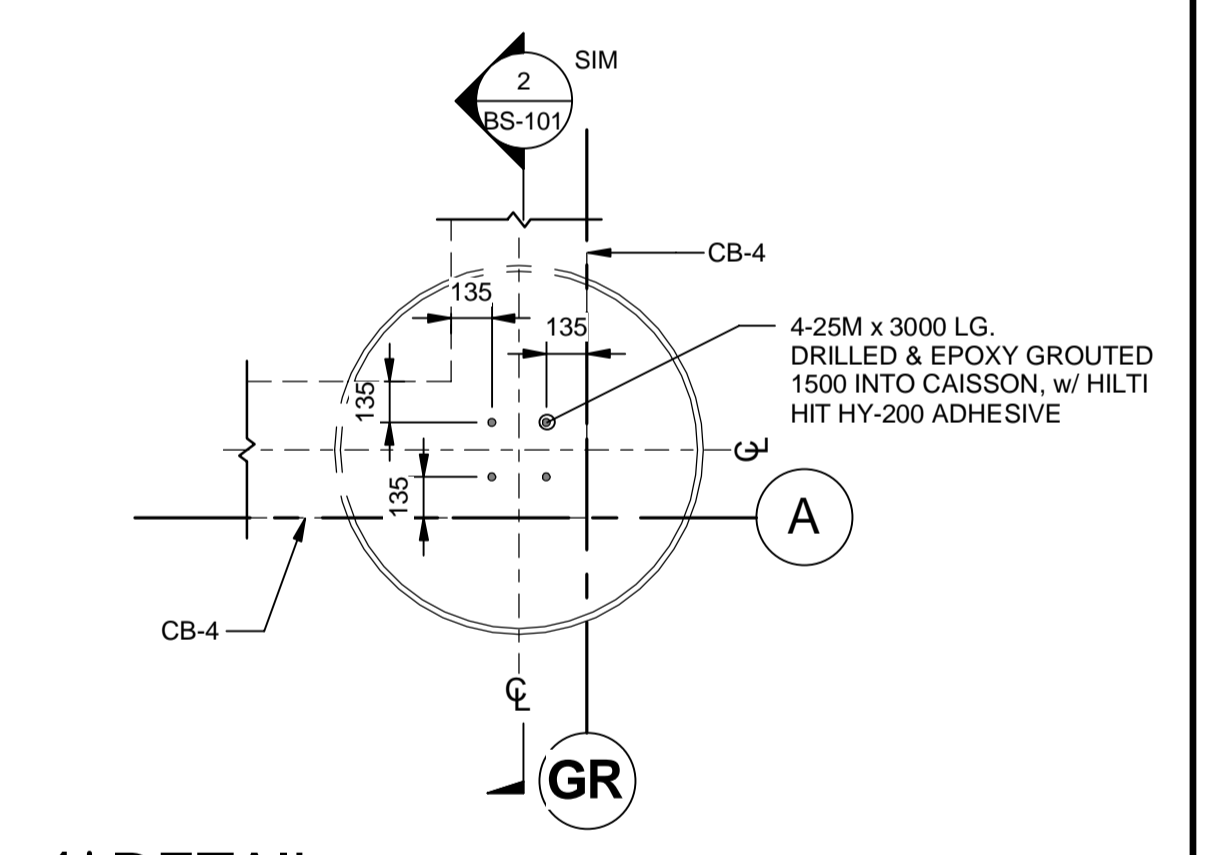
1 | LOWER LEVEL
BS-101 SCALE: 1 : 50



2 | SECTION
BS-101 REF: BS-101 SCALE: 1 : 20



3 | DETAIL
BS-101 REF: BS-101 SCALE: 1 : 20



4 | DETAIL
BS-101 REF: BS-102 SCALE: 1 : 25

LOWER LEVEL DESIGN LOADS (UNFACTORED)		
DEAD LOADS	STRUCTURE SELF WEIGHT	
LIVE LOADS	MAXIMUM WATER LEVEL AT EL. 228.60m PUMP ROOM	7.0m LIQUID DEPTH 7.2 kPa
EARTH LOADS	LATERAL EARTH PRESSURE	(6+15H) kPa (H=DEPTH OF SOIL)
	SOIL UNIT WEIGHT	21 kN/m ³



UNDERGROUND STRUCTURES					B.M. ELEV.
NO.	REVISIONS	DATE	BY	DATE	
1	ISSUED FOR ADDENDUM 4	17/02/22	KK		
0	ISSUED FOR TENDER	17/01/09	KK		

AECOM	
DESIGNED BY	KKJT
CHECKED BY	SBB
DRAWN BY	KK
APPROVED BY	AN
HOR. SCALE	AS SHOWN
VERTICAL	RELEASED FOR CONSTRUCTION
DATE	06/01/2016
DATE	09/06/2016

ENGINEER'S SEAL
PROVINCE OF MANITOBA
J.A. THOMPSON
Member
30632
REGISTERED PROFESSIONAL ENGINEER
CONSULTANT PROJECT NUMBER
60321148

THE CITY OF WINNIPEG
PUBLIC WORKS DEPARTMENT
Waverley Street Underpass at CN Mile 3.89 Rivers Sub
CONTRACT 2: UNDERPASS STRUCTURE, RAILWORKS,
ROADWORKS, LAND DRAINAGE SEWER, PUMPING STATION
AND LANDSCAPING WORKS
SHEET 7 OF 16
CONSULTANT DRAWING NUMBER
C2-BS-101

METRIC
WHOLE NUMBERS INDICATE MILLIMETRES
DECIMALIZED NUMBERS INDICATE METRES

P:\60321148\900-Work\910-CAD\91-09-SUPPORT\PROJECT_TITLE_BLOCKS\Title_Block_for_Pump_Station_works\1633853-XTB-C1-CU.dwg