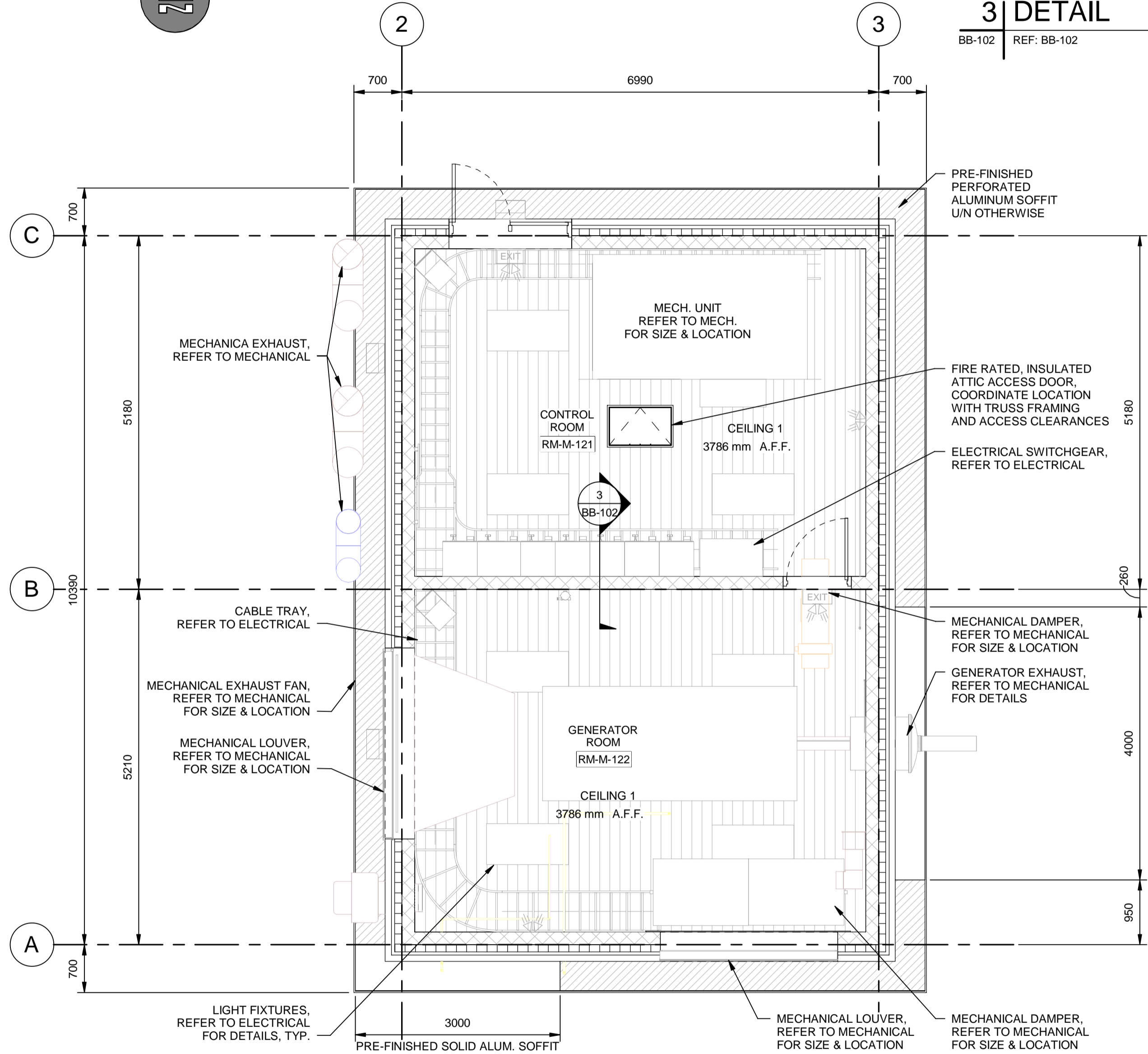
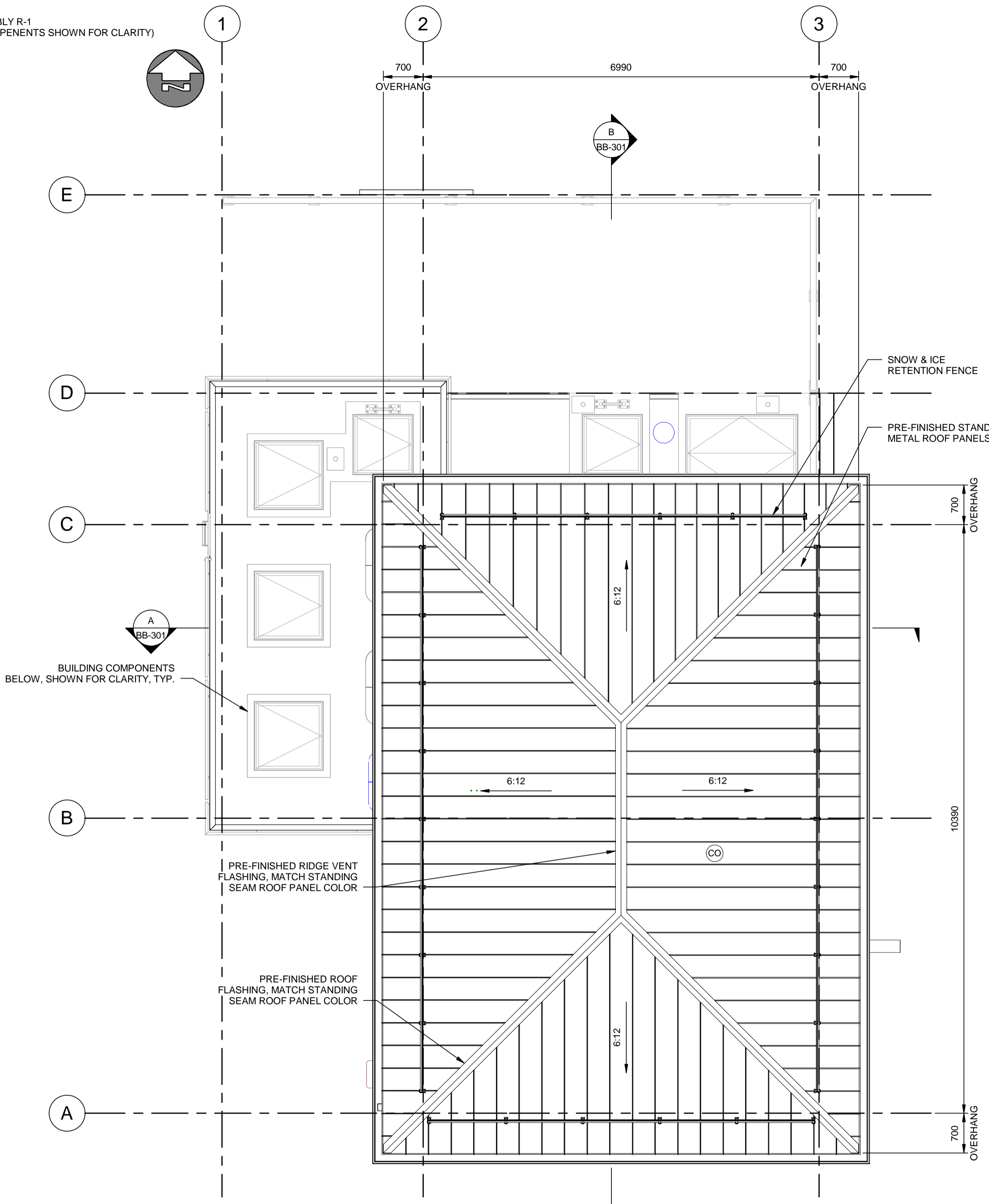


TYPICAL DEMISING WALL 3 | DETAIL

BB-102 REF: BB-102 SCALE: 1:20



1 | REFLECTED CEILING PLAN
 BB-102 SCALE: 1:50



2 | ROOF PLAN
 BB-102 SCALE: 1:50

METRIC
 WHOLE NUMBERS INDICATE MILLIMETRES
 DECIMALIZED NUMBERS INDICATE METRES

AECM
 Certificate of Authorization
 AECOM Canada Ltd.
 No. 4671 Date: _____

UNDERGROUND STRUCTURES		B.M. ELEV.

SUPPLY U/G STRUCTURES			DATE

AECOM			
DESIGNED BY	KK	CHECKED BY	GGP
DRAWN BY	KK	APPROVED BY	AN
HOR. SCALE	AS SHOWN	RELEASED FOR CONSTRUCTION	
VERTICAL			
ISSUED FOR TENDER	17/01/09	KK	
REVISIONS	NO.	DATE	BY
		06/01/2016	
		09/06/2016	

ENGINEER'S SEAL
 PROVINCE OF MANITOBA
S.B. BISWANGER
 REGISTERED PROFESSIONAL ENGINEER
 CONSULTANT PROJECT NUMBER
 60321148

THE CITY OF WINNIPEG
 PUBLIC WORKS DEPARTMENT
Winnipeg
 WAVERLEY STREET UNDERPASS AT CN MILE 3.89 RIVERS SUB
 CONTRACT 2: UNDERPASS STRUCTURE, RAILWORKS,
 ROADWORKS, LAND DRAINAGE SEWER, PUMPING STATION
 AND LANDSCAPING WORKS
 CITY DRAWING NUMBER
 U-239-2016-C2-BB-102
 SHEET 5 OF 9
 CONSULTANT DRAWING NUMBER
 C2-BB-102

P:\0321148\900-Work\910-CAD\99-SUPPORT\PROJECT_TITLE_BLOCKS\Title_Block_for_Pump_Station_works\163853-XTB-C1-CU.dwg